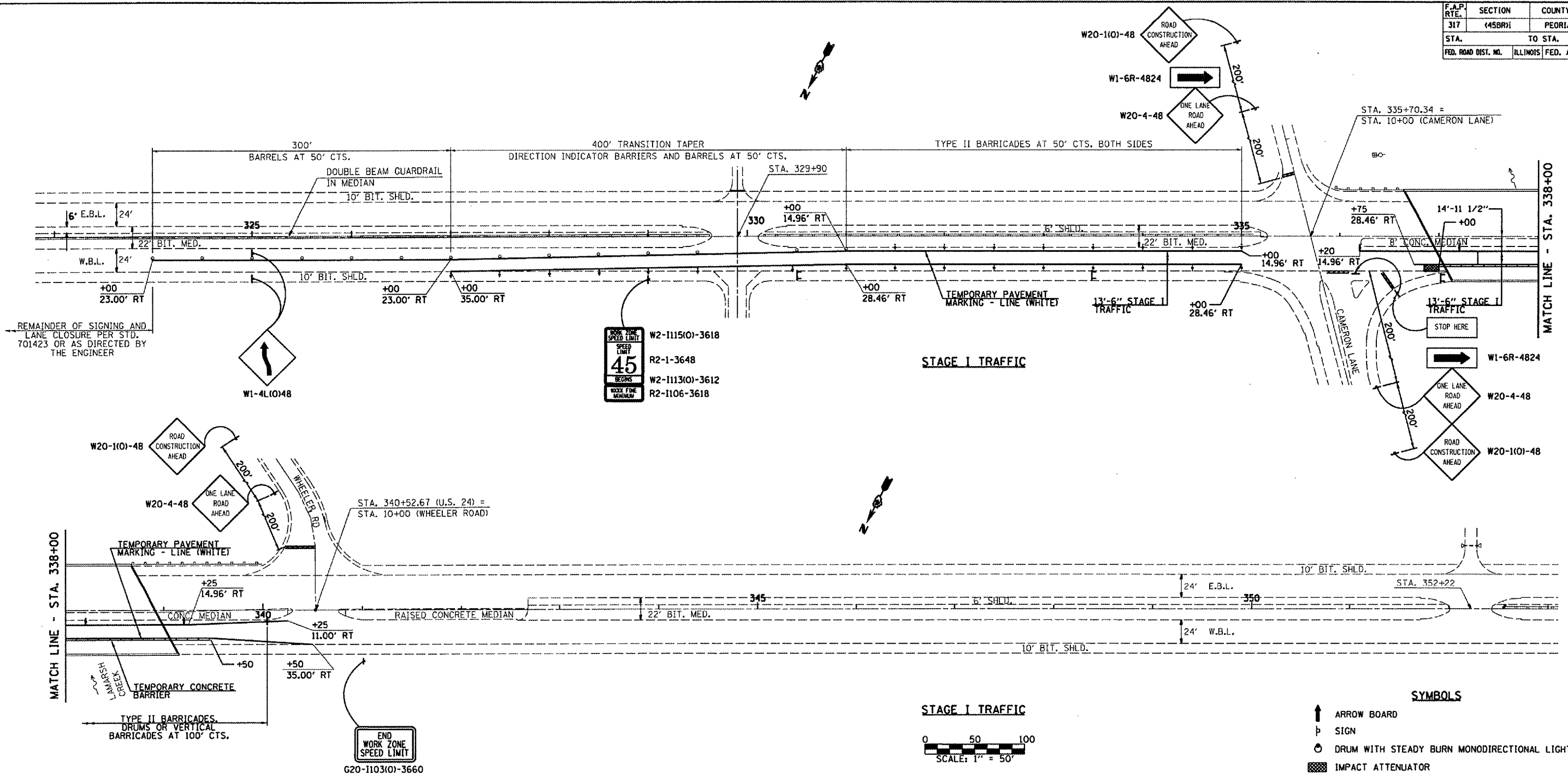


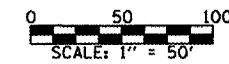
|                     |         |                           |              |           |
|---------------------|---------|---------------------------|--------------|-----------|
| F.A.P. RTE.         | SECTION | COUNTY                    | TOTAL SHEETS | SHEET NO. |
| 317                 | (45BR)  | PEORIA                    | 82           | 40        |
| STA.                |         | TO STA.                   |              |           |
| FED. ROAD DIST. NO. |         | ILLINOIS FED. AID PROJECT |              |           |



W2-1115(O)-3618  
 R2-1-3648  
 W2-1113(O)-3612  
 R2-1106-3618

STAGE I TRAFFIC

STAGE I TRAFFIC



- SYMBOLS**
- ↑ ARROW BOARD
  - ⊥ SIGN
  - ⊙ DRUM WITH STEADY BURN MONODIRECTIONAL LIGHT
  - IMPACT ATTENUATOR
  - VERTICAL PANEL WITH STEADY BURN MONODIRECTIONAL LIGHT
  - ⊥ TYPE II BARRICADE, DRUM OR VERTICAL BARRICADE WITH STEADY BURN MONODIRECTIONAL LIGHT
  - ⊥ DIRECTION INDICATOR BARRICADE WITH STEADY BURN MONODIRECTIONAL LIGHT
  - ◁ TYPE C MONODIRECTIONAL REFLECTOR
  - ⊥ TYPE III BARRICADE
  - TEMPORARY PAINT MARKING - LINE 24"

NOTE: WORK THIS SHEET WITH THE FOLLOWING SHEET.

**SUGGESTED STAGE CONSTRUCTION SEQUENCE**

- |   |   |   |
|---|---|---|
| <p><b>STAGE I</b></p> <ol style="list-style-type: none"> <li>REMOVE AND REPLACE PAVED SHOULDERS WITH HOT MIX ASPHALT BASE COURSE 9" PER SHOULDER SCHEDULE</li> <li>ERECT TRAFFIC CONTROL FOR STAGE I AND INSTALL TEMPORARY PAVEMENT MARKING.</li> <li>CUT EXISTING CONCRETE OVERLAY AND WATERPROOFING MEMBRANE AT ALL EDGES OF EXISTING P.P.C. DECK BEAM NO. 19 IN SPAN 3 AS SHOWN ON PLAN SHEET.</li> <li>REMOVE EXISTING CURB, RAIL AND P.P.C. DECK BEAM NO. 19 IN SPAN 3 AND REPLACE WITH NEW P. P. C. DECK BEAM.</li> <li>CONSTRUCT PROPOSED CURB AND RAIL ON TOP OF NEW P.P.C. DECK BEAM.</li> <li>INSTALL NEW WATERPROOFING MEMBRANE SYSTEM AND 5" CONCRETE OVERLAY ON NEW P.P.C. DECK BEAM.</li> </ol> | <p><b>STAGE II</b></p> <ol style="list-style-type: none"> <li>ERECT TRAFFIC CONTROL FOR STAGE II AND INSTALL TEMPORARY PAVEMENT MARKINGS.</li> <li>CUT EXISTING CONCRETE OVERLAY, WATERPROOFING MEMBRANE AND MEDIAN AT ALL EDGES OF EXISTING P.P.C. DECK BEAMS NO. 3 AND 8 IN SPAN 1 AND BEAM NO. 7 IN SPAN 3 AS SHOWN ON PLAN SHEET.</li> <li>REMOVE EXISTING P.P.C. DECK BEAMS NO. 3 AND 8 IN SPAN 1 AND BEAM NO. 7 IN SPAN 3 AND REPLACE WITH NEW P.P.C. DECK BEAMS.</li> <li>REPAIR CUT MEDIAN AREAS PER DETAILS SHOWN ON SHEET NO.</li> <li>INSTALL NEW WATERPROOFING MEMBRANE SYSTEM AND 5" CONCRETE OVERLAY ON NEW P.P.C. DECK BEAMS.</li> </ol> | <p><b>STAGE III</b></p> <ol style="list-style-type: none"> <li>ERECT TRAFFIC CONTROL FOR STAGE III AND INSTALL TEMPORARY PAVEMENT MARKINGS.</li> <li>CUT EXISTING HOT MIX ASPHALT AND WATERPROOFING MEMBRANE AT ALL EDGES OF EXISTING P.P.C. DECK BEAMS NO. 1 AND 2 IN SPANS 2 AND 3 AS SHOWN ON PLAN SHEET.</li> <li>REMOVE EXISTING CURB, RAIL AND P.P.C. DECK BEAM NOS. 1 AND 2 IN SPANS 2 AND 3 AND REPLACE WITH PROPOSED P.P.C. DECK BEAMS.</li> <li>CONSTRUCT PROPOSED CURB AND RAIL ON TOP OF NEW P.P.C. DECK BEAM.</li> <li>INSTALL NEW WATERPROOFING MEMBRANE SYSTEM AND HOT MIX ASPHALT ON NEW P.P.C. DECK BEAM.</li> </ol> |
|---|---|---|

**GENERAL NOTES**

- THIS TRAFFIC CONTROL DETAIL SHALL BE USED IN CONJUNCTION WITH STANDARD 701423.
- EXISTING PAVEMENT MARKINGS THAT CONFLICT WITH THE REVISED STAGE TRAFFIC PATTERNS DURING ALL PHASES OF STAGE CONSTRUCTION SHALL BE REMOVED AS SPECIFIED IN SECTION 783 OF THE STANDARD SPECIFICATIONS AND PAID FOR AS "PAVEMENT MARKING REMOVAL".
- THE CONTRACTOR SHALL MAINTAIN ACCESS TO ALL PRIVATE AND COMMERCIAL PROPERTIES DURING ALL PHASES OF CONSTRUCTION.
- COST OF INSTALLATION OF TEMPORARY STOP SIGNS, BARRICADES, AND DRUMS, NO MATTER HOW MANY SET-UPS REQUIRED, SHALL BE INCLUDED IN THE COST EACH OF TRAFFIC CONTROL AND PROTECTION STANDARD 701423.

**STAGE CONSTRUCTION TRAFFIC DETAILS**  
 F.A.P. ROUTE 317 - (U.S. 24)  
 OVER LAMARSH CREEK  
 SECTION (45BR)  
 PEORIA COUNTY  
 S.N. 072-0010

PLOT DATE: 3/22/2007  
 FILE NAME: C:\Documents and Settings\veanharoda\Desktop\SP180204.dgn