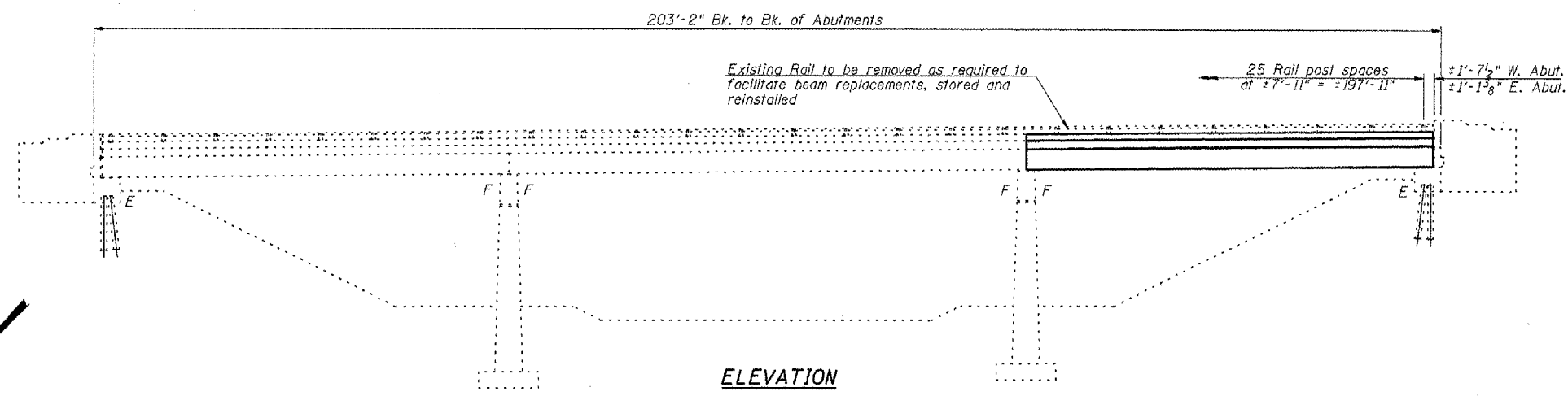
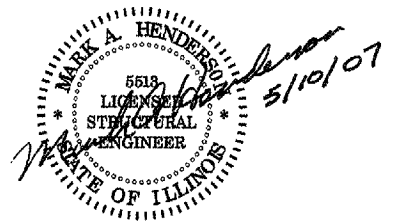


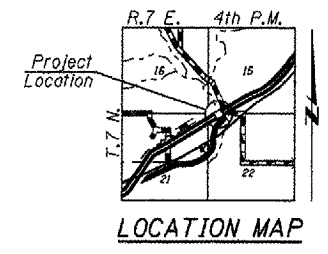
CONTRACT NO. 68456				
F.A.P. SECTION	COUNTY	TOTAL SHEETS	SHEET NO.	
317 (45BR1)	PEORIA	82	82	43
STA. TO STA.		ILLINOIS FED. AID PROJECT		
FED. ROAD DIST. NO.		SHEET NO. 1 OF 12 SHEETS		



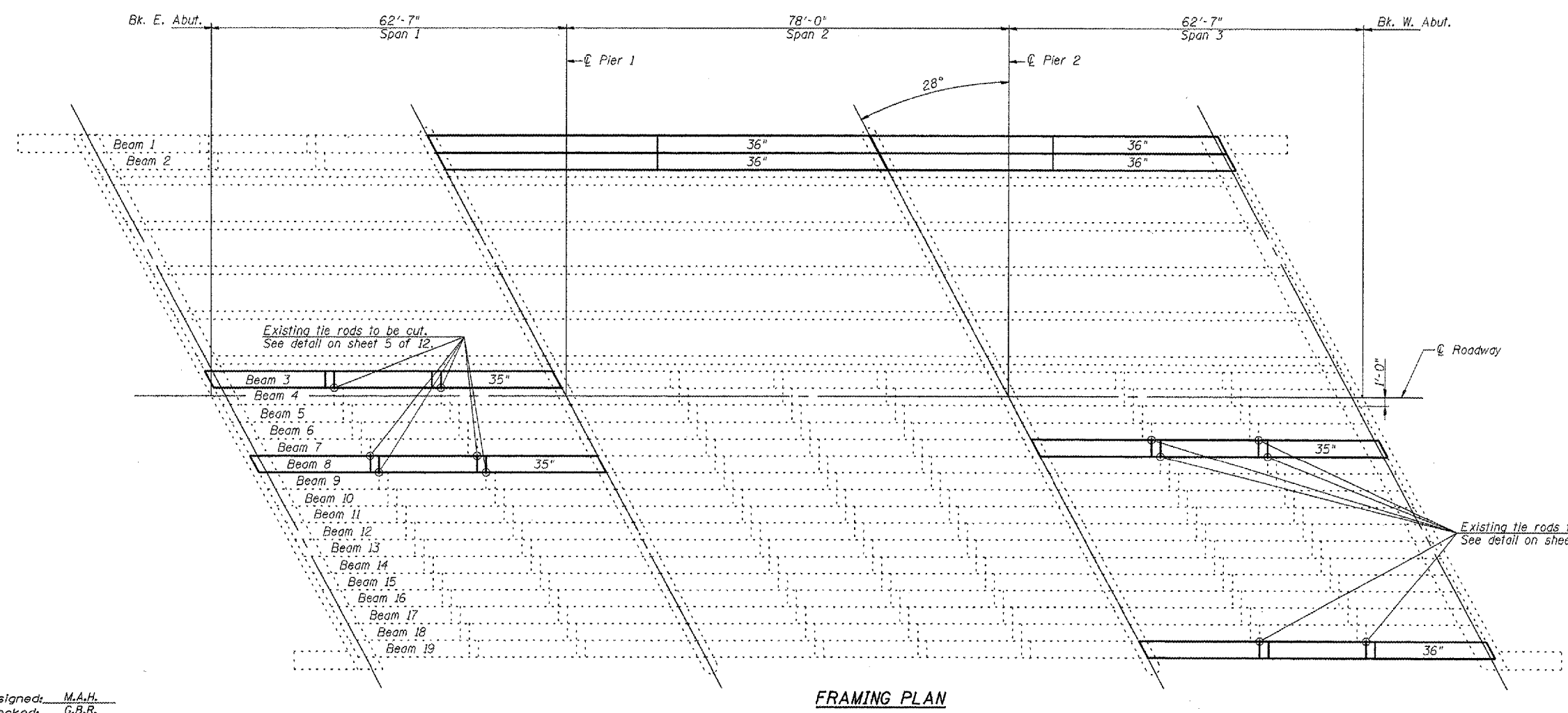
- INDEX OF SHEETS**
- 1 - GENERAL PLAN & ELEVATION
 - 2 - GENERAL NOTES
 - 3 - STAGING DETAILS
 - 4 - STAGING DETAILS
 - 5 - BEAM DETAILS - SPAN 1 (BEAMS 3 & 8) AND SPAN 3 (BEAM 7)
 - 6 - BEAM DETAILS - SPAN 2 (BEAMS 1 & 2)
 - 7 - BEAM DETAILS - SPAN 3 (BEAMS 1 & 2)
 - 8 - BEAM DETAILS - SPAN 3 (BEAM 19)
 - 9 - BRIDGE REPAIR DETAILS
 - 10 - MEDIAN & CONCRETE OVERLAY DETAILS
 - 11 - PARAPET DETAILS
 - 12 - SCOUR PROTECTION PLAN



Exp. DATE: 11/30/2008



GENERAL PLAN & ELEVATION
U.S. RTE. 24 / IL RTE. 9
OVER LAMARSH CREEK
F.A.P. RTE. 317 - SECTION (45BR1)
PEORIA COUNTY
STA. 337+87.67
S.N. 072-0010



PLT DATE = 4/07/07
 FILE NAME = 07FILES

Designed: M.A.H.
 Checked: G.B.R.
 Drawn: J.R.P.
 Checked: M.A.H.