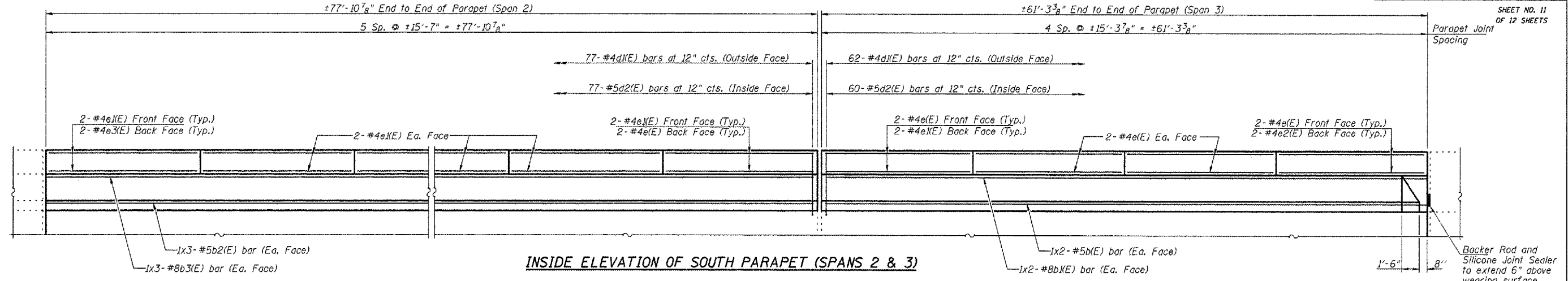


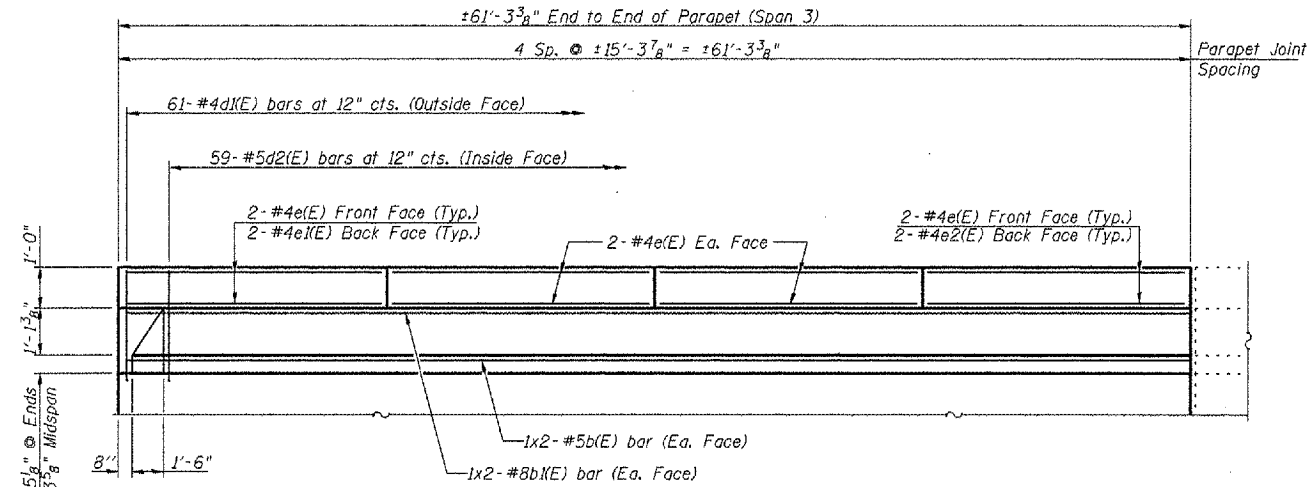
CONTRACT NO. 68456				
F.A.P. RTE.	SECTION	COUNTY	TOTAL SHEETS	SHEET NO.
317	(45BR)	PEORIA	82	53
STA.	TO STA.		FED. AID PROJECT	

SHEET NO. 11
OF 12 SHEETS

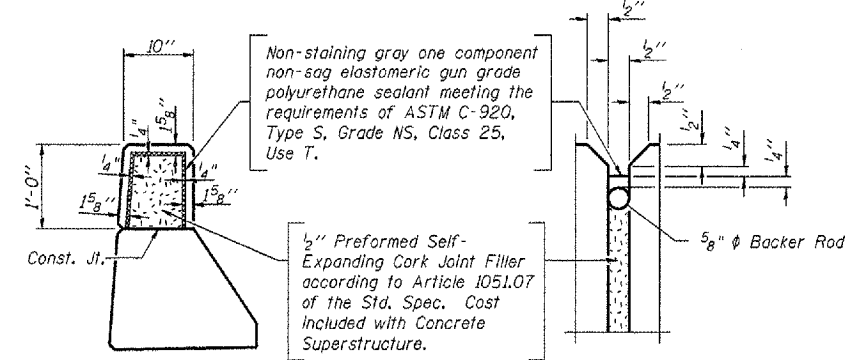


INSIDE ELEVATION OF SOUTH PARAPET (SPANS 2 & 3)

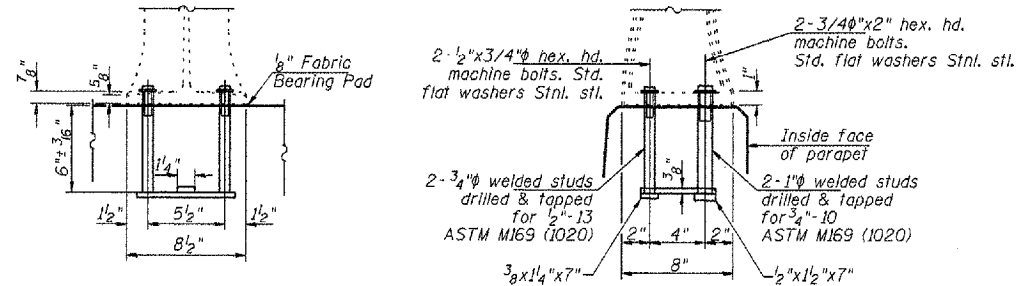
MIN. BAR LAP
 #4 = 1'-8"
 #5 = 2'-2"
 #8 = 4'-6"



INSIDE ELEVATION OF NORTH PARAPET (SPAN 3)



PARAPET JOINT DETAILS

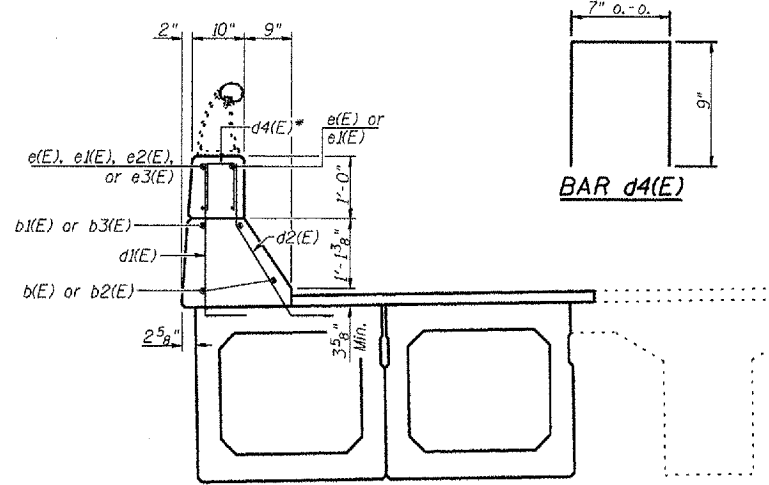


RAIL POST ANCHORAGE DETAILS

BILL OF MATERIAL - PARAPET

BAR	NO.	SIZE	LENGTH	SHAPE
b(E)	8	#5	31'-8"	—
b1(E)	8	#8	32'-9"	—
b2(E)	6	#5	27'-5"	—
b3(E)	6	#8	29'-0"	—
d4(E)	52	#4	2'-1"	□
e(E)	26	#4	14'-11"	—
e1(E)	20	#4	15'-3"	—
e2(E)	4	#4	14'-7"	—
e3(E)	2	#4	15'-7"	—
Reinforcement Bars, Epoxy Coated			Pound	2190
Concrete Superstructures			Cu. Yds.	22.7
Concrete Removal			Cu. Yds.	22.7
Removing and Re-erecting Existing Railing			Foot	201

Notes:
 Bars d1(E) and d2(E) shall be cast with the P.P.C. Deck beams. Cost included in the cost of Precast Prestressed Concrete Deck Beams (33" Depth).
 Bars indicated thus 1x2-#5 etc. indicates 1 line of bars with 2 lengths per line.



SECTION THRU PARAPET
(Beam 1 shown, Beam 19 Similar)

*Place 2-#4d4(E) bars at each rail post anchor. See sheet 1 of 12 for rail post spacing.

PARAPET DETAILS
 U.S. RTE. 24 / IL RTE. 9
 OVER LAMARSH CREEK
 F.A.P. RTE. 317 - SECTION (45BR)I
 PEORIA COUNTY
 STA. 337+87.67
 S.N. 072-0010

PLAT DATE = 08/07/07
 FILE NAME = #FILE.#