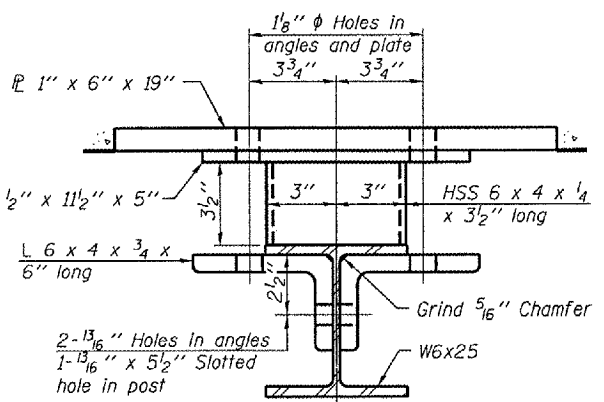
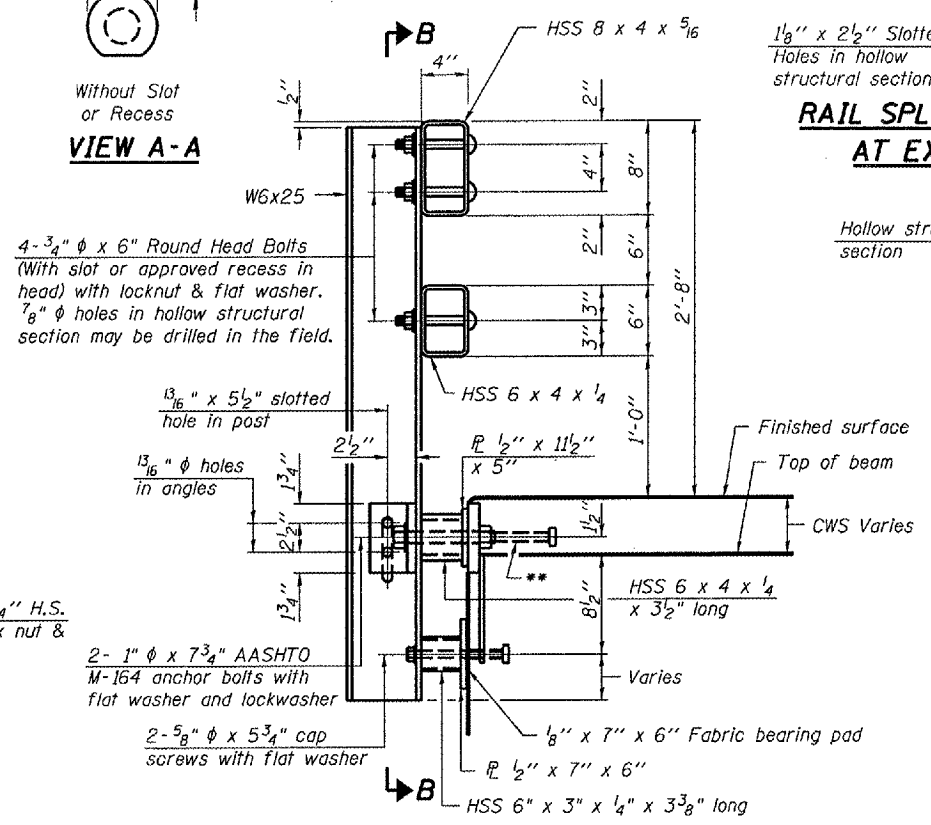


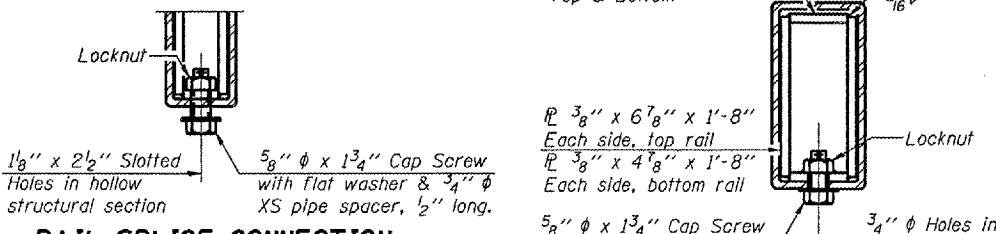
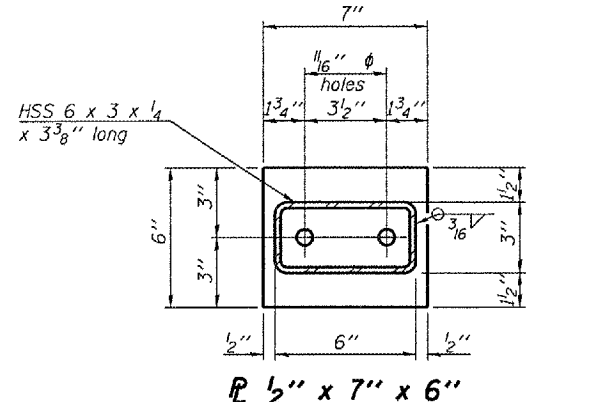
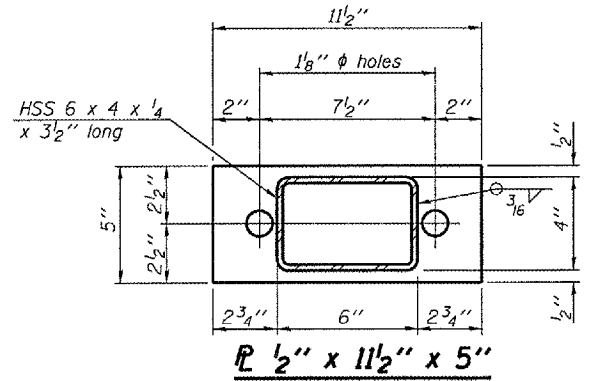
SECTION B-B



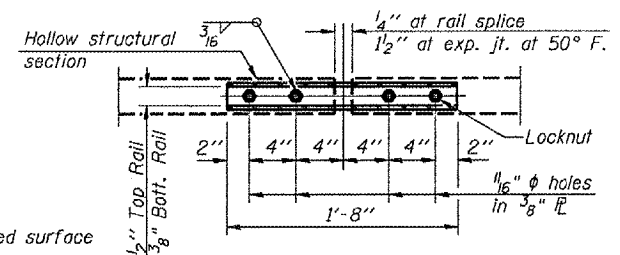
SECTION C-C



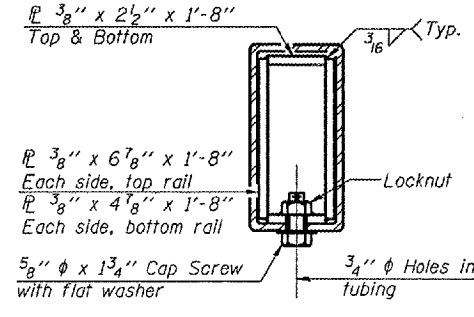
SECTION AT RAIL POST



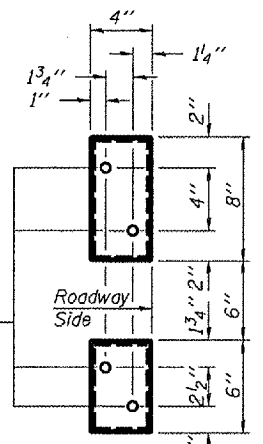
RAIL SPLICE CONNECTION AT EXPANSION JT.



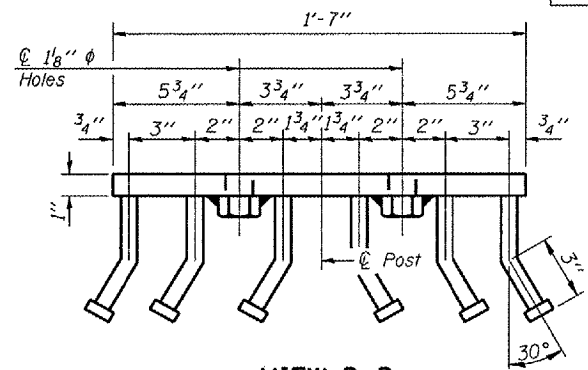
PLAN-BOTT. SPLICE P TYPICAL



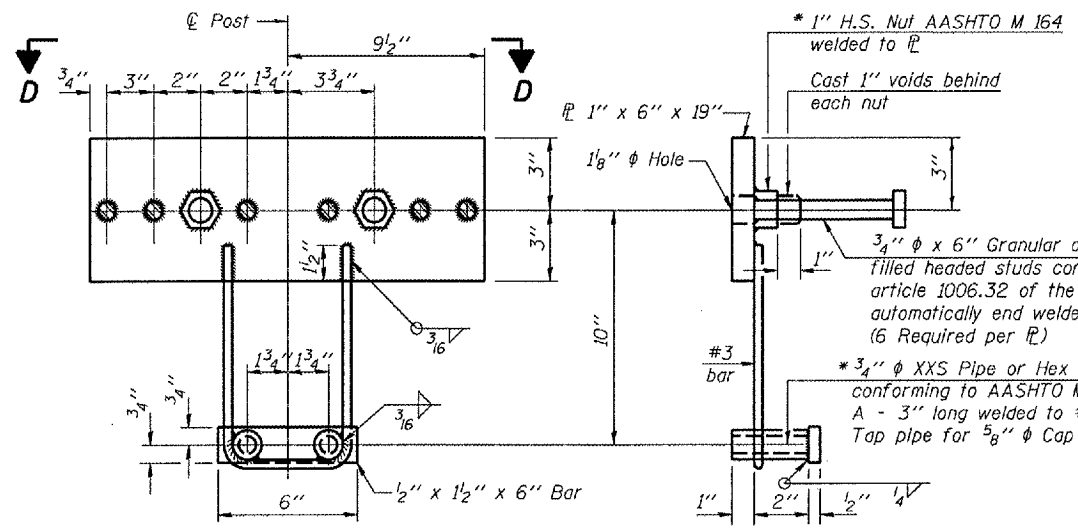
SECTION AT RAIL SPLICE



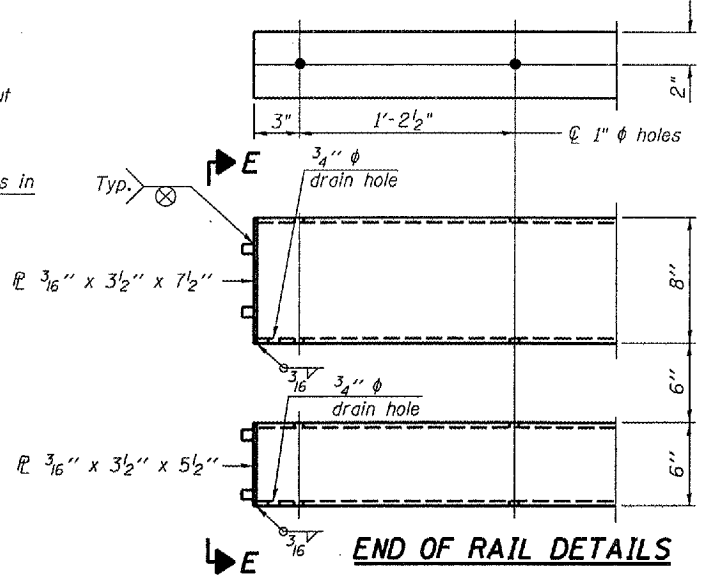
VIEW E-E



VIEW D-D



ANCHOR DEVICE



END OF RAIL DETAILS

Notes:
 All field drilled holes shall be coated with an approved zinc rich paint before erection.
 For multi-span bridges, sufficient 1/4" x 6" x 1'-2" galvanized steel shims shall be provided to align rail between adjacent spans. Cost included with Steel Bridge Rail, Type SM.
 Steel rail elements shall be galvanized according to Article 509.05 of the Standard Specifications.
 The studs of the anchor devices shall be placed below the top reinforcement bars and the outermost longitudinal reinforcement bar shall be placed directly above the studs of the rail post anchor device.

BILL OF MATERIAL

Item	Unit	Quantity
Steel Railing, Type SM	Foot	244

STEEL RAILING, TYPE SM WITH CONCRETE WEARING SURFACE
U.S. ROUTE 24 OVER LITTLE LOMARSH CREEK
F.A.P. RTE. 317 - SECTION (45-RB1)-1
PEORIA COUNTY
STA. 496+86.55
S.N. 072-0136

* Threaded areas shall be plugged or blocked off during casting of beam. Galvanized after fabrication.

FILE NAME: STRUCTURE PLANS (REV. 2/1/07)