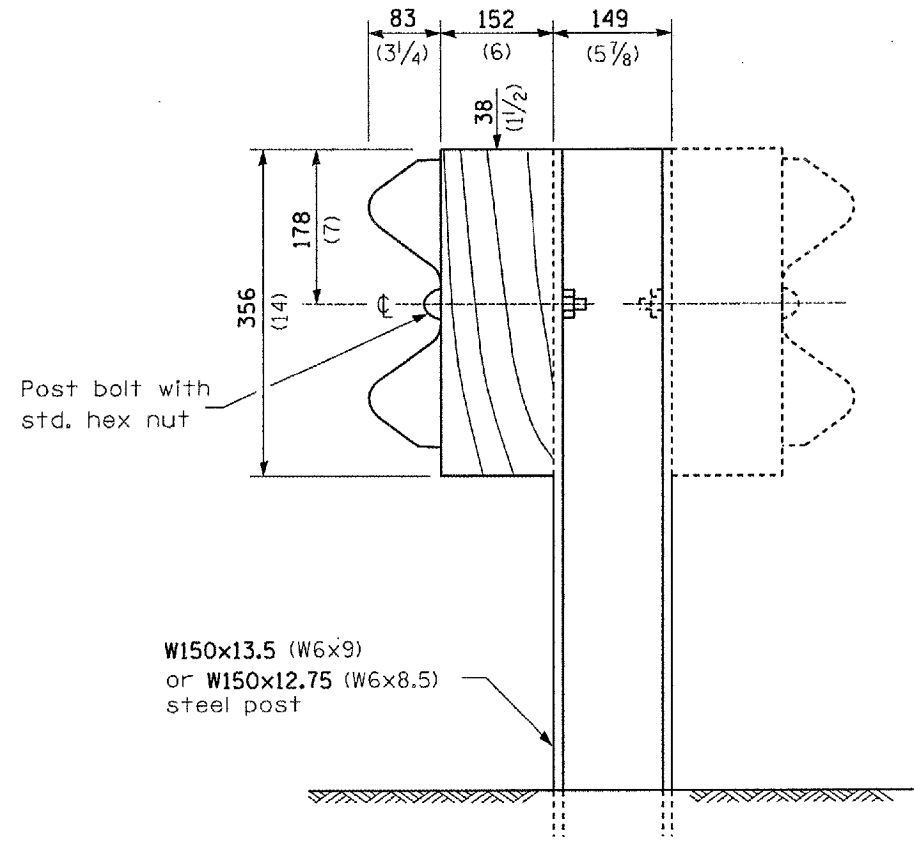
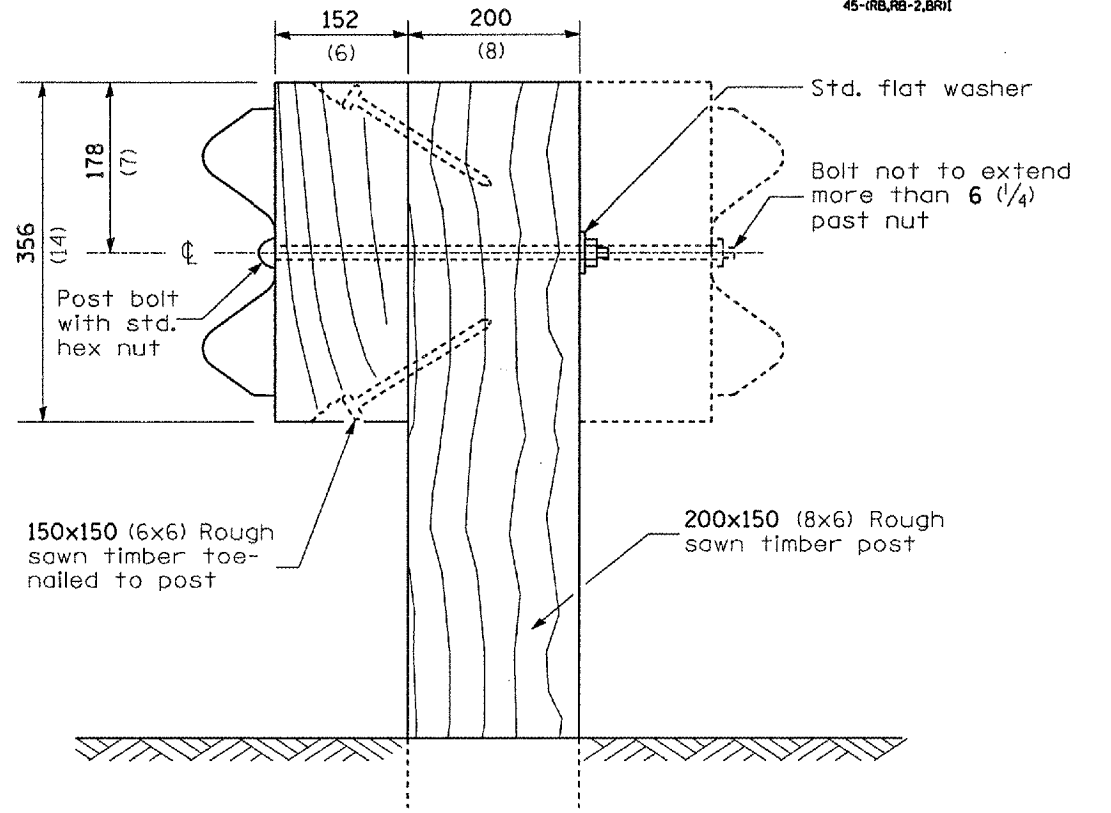


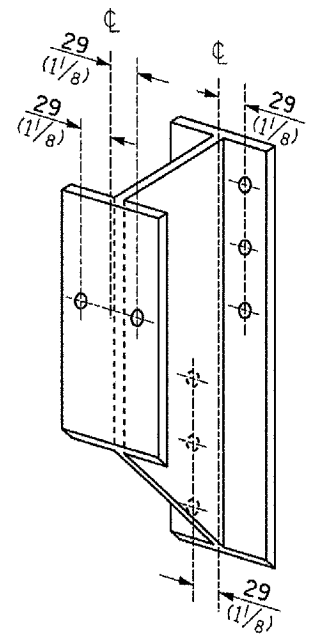
F.A.P. SHEETS	SECTION	COUNTY	TOTAL SHEETS	SHEET NO.
317	144.451 RS-5,	PEORIA	82	74
45-11 RS-7, 45-11B, RB-2, BR1				



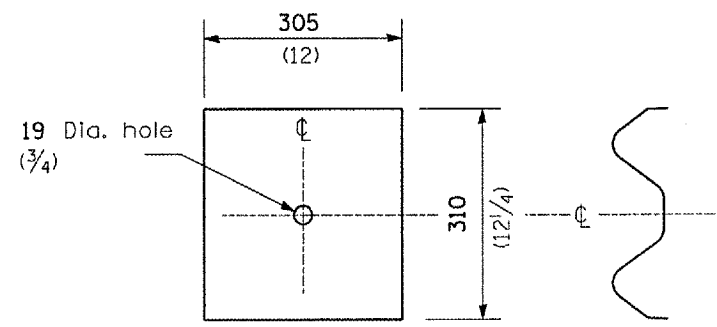
STEEL POST CONSTRUCTION



WOOD POST CONSTRUCTION



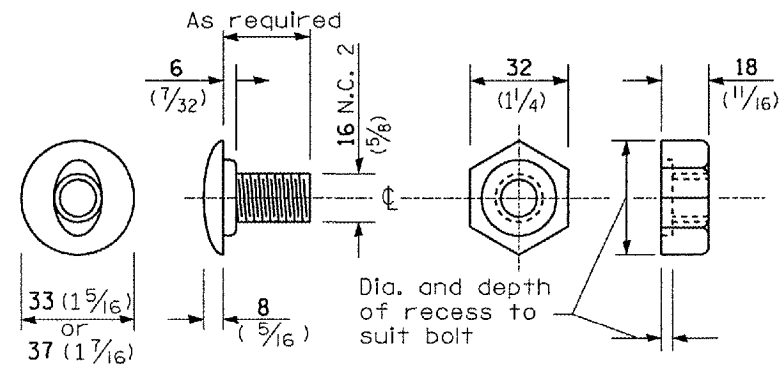
STEEL BLOCK-OUT DETAIL



NOTE

Plate A shall be placed between rail element and block-out at non-splice mounting points only when steel block-outs are used.

PLATE A



POST OR SPLICE BOLT & NUT

**REMOVE AND REERECT
STEEL PLATE BEAM GUARDRAIL**
(Sheet 2 of 4)

DETAIL