

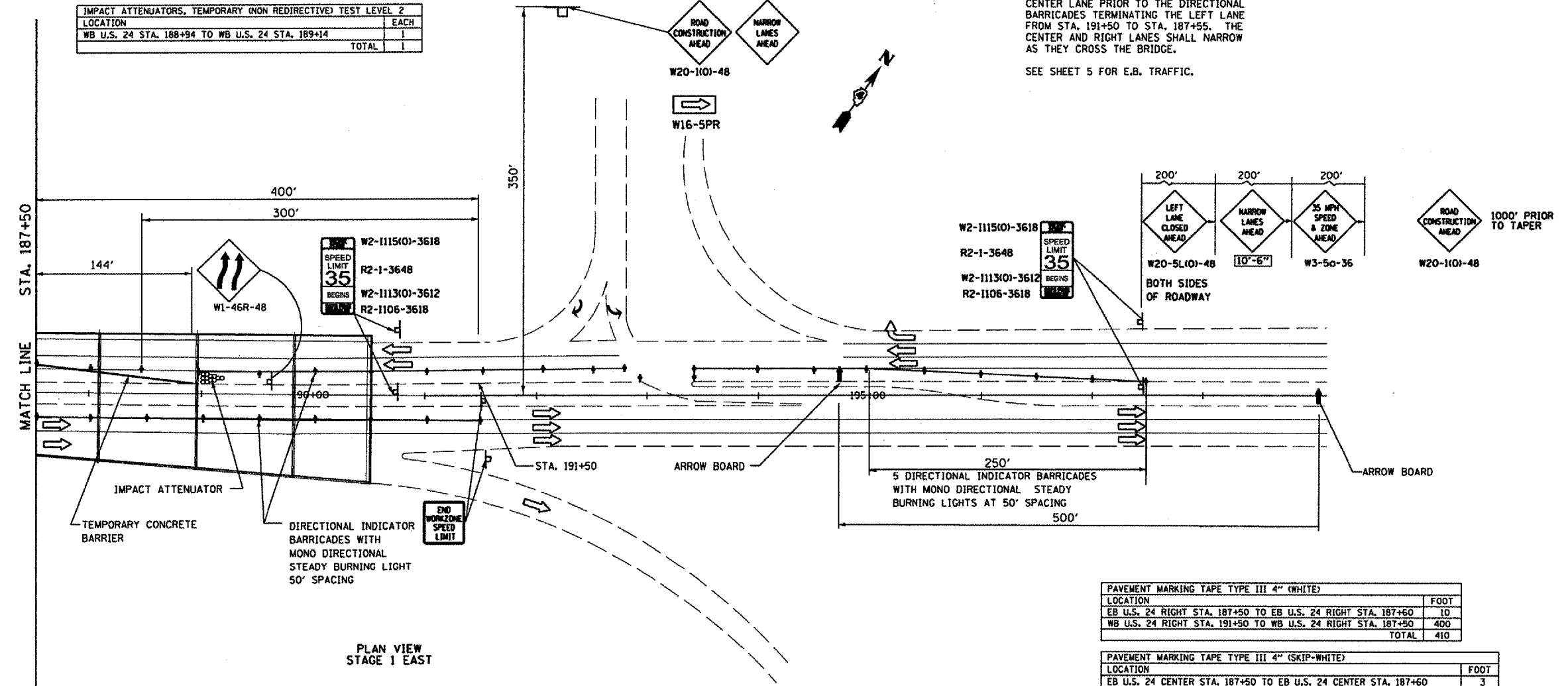
F.A.P. RTE.	SECTION	COUNTY	TOTAL SHEETS	NO.
317	148BI	PEORIA	29	6
STA.		TO STA.		
FED. ROAD DIST. NO.		ILLINOIS	FED. AID PROJECT	
D-94-062-05				

TEMPORARY CONCRETE BARRIER		FOOT
LOCATION		
WB U.S. 24 STA. 187+50 TO WB U.S. 24 STA. 188+94		144
EB U.S. 24 STA. 187+50 TO EB U.S. 24 STA. 187+70		20
	TOTAL	164

IMPACT ATTENUATORS, TEMPORARY (NON REDIRECTIVE) TEST LEVEL 2		EACH
LOCATION		
WB U.S. 24 STA. 188+94 TO WB U.S. 24 STA. 189+14		1
	TOTAL	1

FLOW OF TRAFFIC:
U.S. RT. 24

W.B. - FROM STA. 197+50 TO STA. 195+50, THE LEFT LANE SHALL MERGE INTO THE CENTER LANE PRIOR TO THE DIRECTIONAL BARRICADES TERMINATING THE LEFT LANE FROM STA. 191+50 TO STA. 187+55. THE CENTER AND RIGHT LANES SHALL NARROW AS THEY CROSS THE BRIDGE.
SEE SHEET 5 FOR E.B. TRAFFIC.

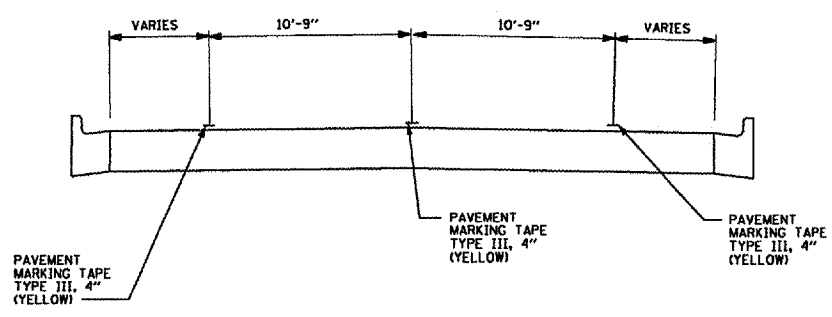


PLAN VIEW
STAGE 1 EAST

PAVEMENT MARKING TAPE TYPE III 4" (WHITE)		FOOT
LOCATION		
EB U.S. 24 RIGHT STA. 187+50 TO EB U.S. 24 RIGHT STA. 187+60		10
WB U.S. 24 RIGHT STA. 191+50 TO WB U.S. 24 RIGHT STA. 187+50		400
	TOTAL	410

PAVEMENT MARKING TAPE TYPE III 4" (SKIP-WHITE)		FOOT
LOCATION		
EB U.S. 24 CENTER STA. 187+50 TO EB U.S. 24 CENTER STA. 187+60		3
WB U.S. 24 CENTER STA. 195+00 TO WB U.S. 24 CENTER STA. 187+50		188
	TOTAL	191

PAVEMENT MARKING TAPE TYPE III 4" (YELLOW)		FOOT
LOCATION		
EB U.S. 24 LEFT STA. 187+50 TO EB U.S. 24 LEFT STA. 191+50		400
WB U.S. 24 LEFT STA. 197+50 TO WB U.S. 24 LEFT STA. 187+50		1000
	TOTAL	1400



W.B. TYPICAL SECTION
STA. 191+50 TO STA. 187+50
LOOKING WEST

- SYMBOLS**
- ↑ Arrow board
 - Cone, drum or barricade
 - ⊥ Sign on portable or permanent support
 - ▨ Work area
 - ⊕ Barricade or drum with steady burning light
 - ⊕ Type III barricade with flashing lights
 - Flagger with traffic control sign.
 - ⊕ Impact attenuator

REVISIONS	
NAME	DATE
ACJ	6/30/06
JBA	11/14/06

ILLINOIS DEPARTMENT OF TRANSPORTATION
MAINTENANCE OF TRAFFIC STAGE 1
F.A.P. 317 (U.S. RTE. 24)
STRUCTURE 072-0134
PEORIA COUNTY, ILLINOIS
STATION 187+10.02

SCALE: VERT. _____
HORIZ. _____
DATE _____

DRAWN BY JLP
CHECKED BY JRG/JFS