

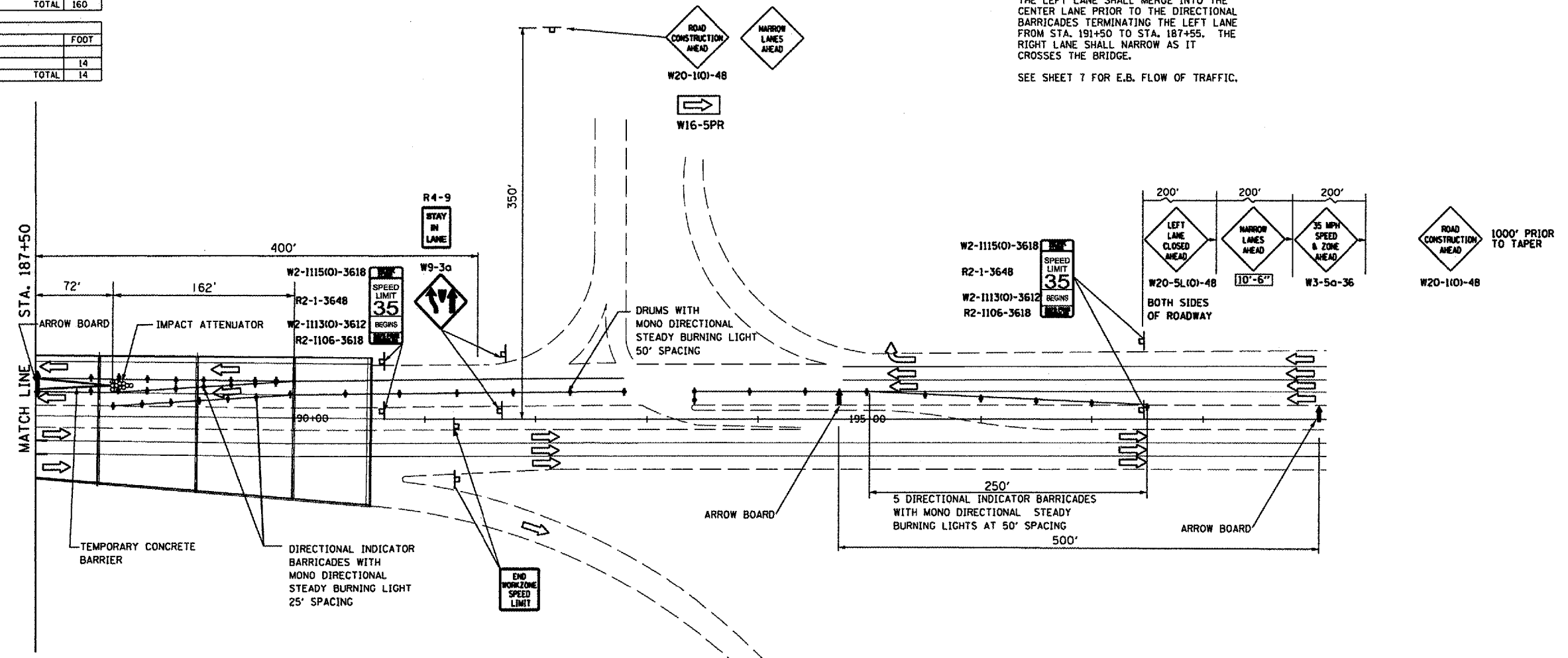
F.A.P. RTE.	SECTION	COUNTY	TOTAL SHEETS	SHEET NO.
317	148D1	PEORIA	29	8
STA.		TO STA.		
FED. ROAD DIST. NO.		ILLINOIS FED. AID PROJECT		
D-94-062-05				

RELOCATE TEMPORARY CONCRETE BARRIER	
LOCATION	FOOT
STAGE 2	
EB U.S. 24 STA. 187+50 TO EB U.S. 24 STA. 187+67	20
WB U.S. 24 STA. 187+50 TO WB U.S. 24 STA. 188+20	140
TOTAL	160

RELOCATE IMPACT ATTENUATORS, TEMPORARY (NON REDIRECTIVE) TEST LEVEL 2	
LOCATION	EACH
EB U.S. 24 STA. 188+20 AND STA. 188+40	1
TOTAL	1

TEMPORARY CONCRETE BARRIER	
LOCATION	FOOT
STAGE 2	
EB U.S. 24 STA. 187+50 TO EB U.S. 24 STA. 187+67	14
TOTAL	14

FLOW OF TRAFFIC:
 U.S. RT. 24
 W.B. - FROM STA. 197+50 TO STA. 195+90,
 THE LEFT LANE SHALL MERGE INTO THE
 CENTER LANE PRIOR TO THE DIRECTIONAL
 BARRICADES TERMINATING THE LEFT LANE
 FROM STA. 191+50 TO STA. 187+55. THE
 RIGHT LANE SHALL NARROW AS IT
 CROSSES THE BRIDGE.
 SEE SHEET 7 FOR E.B. FLOW OF TRAFFIC.



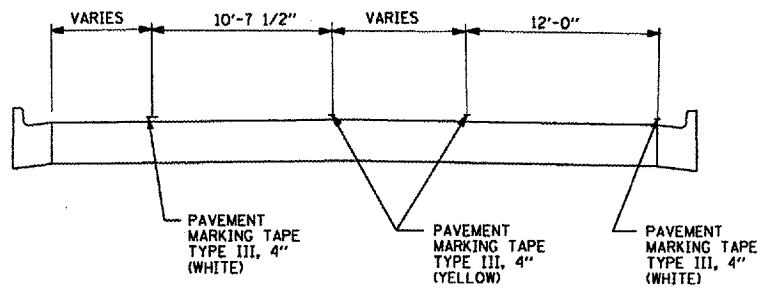
PLAN VIEW
STAGE 2 EAST

PAVEMENT MARKING TAPE TYPE III 4" (WHITE)	
LOCATION	FOOT
WB U.S. 24 RIGHT LANE, RIGHT STA. 191+50 TO STA. 187+50	400
WB U.S. 24 LEFT LANE, LEFT STA. 189+84 TO STA. 187+50	234
TOTAL	634

PAVEMENT MARKING TAPE TYPE III 4" (YELLOW)	
LOCATION	FOOT
WB U.S. 24 RIGHT LANE, LEFT STA. 189+84 TO STA. 187+50	234
WB U.S. 24 LEFT LANE, RIGHT STA. 189+84 TO STA. 187+50	234
TOTAL	468

PAVEMENT MARKING TAPE TYPE III 8" (WHITE)	
LOCATION	FOOT
WB U.S. 24 RIGHT LANE, LEFT STA. 192+85 TO STA. 189+84	301
TOTAL	301

- SYMBOLS**
- ↑ Arrow board
 - Cone, drum or barricade
 - ⊥ Sign on portable or permanent support
 - ▨ Work area
 - ⊕ Barricade or drum with steady burning light
 - ⊕ Type III barricade with flashing lights
 - ⊕ Flagger with traffic control sign
 - ⊕ Impact attenuator



W.B. TYPICAL SECTION
STA. 190+00 TO STA. 187+50
LOOKING WEST

REVISIONS	
NAME	DATE
ACJ	6/30/06
JBA	11/14/06

ILLINOIS DEPARTMENT OF TRANSPORTATION
 MAINTENANCE OF TRAFFIC STAGE 2
 F.A.P. 317 (U.S. RTE. 24)
 STRUCTURE 072-0134
 PEORIA COUNTY, ILLINOIS
 STATION 187+10.02
 SCALE: VERT. _____
 HORIZ. _____
 DATE _____
 DRAWN BY JLP
 CHECKED BY JRG/JFS