

CONTRACT NO. 68480				
F.A.P. RTE.	SECTION	COUNTY	TOTAL SHEETS	SHEET NO.
317	(48B)	PEORIA	29	9
STA.	TO STA.			
FED. ROAD DIST. NO.	ILLINOIS	FED. AID PROJECT		
D-94-062-05				

NOTE: SOME TEMPORARY CONCRETE BARRIER USED IN STAGE 2 IN THE EAST BOUND LANES WILL BE RELOCATED TO WEST BOUND LANES FOR STAGE 3.

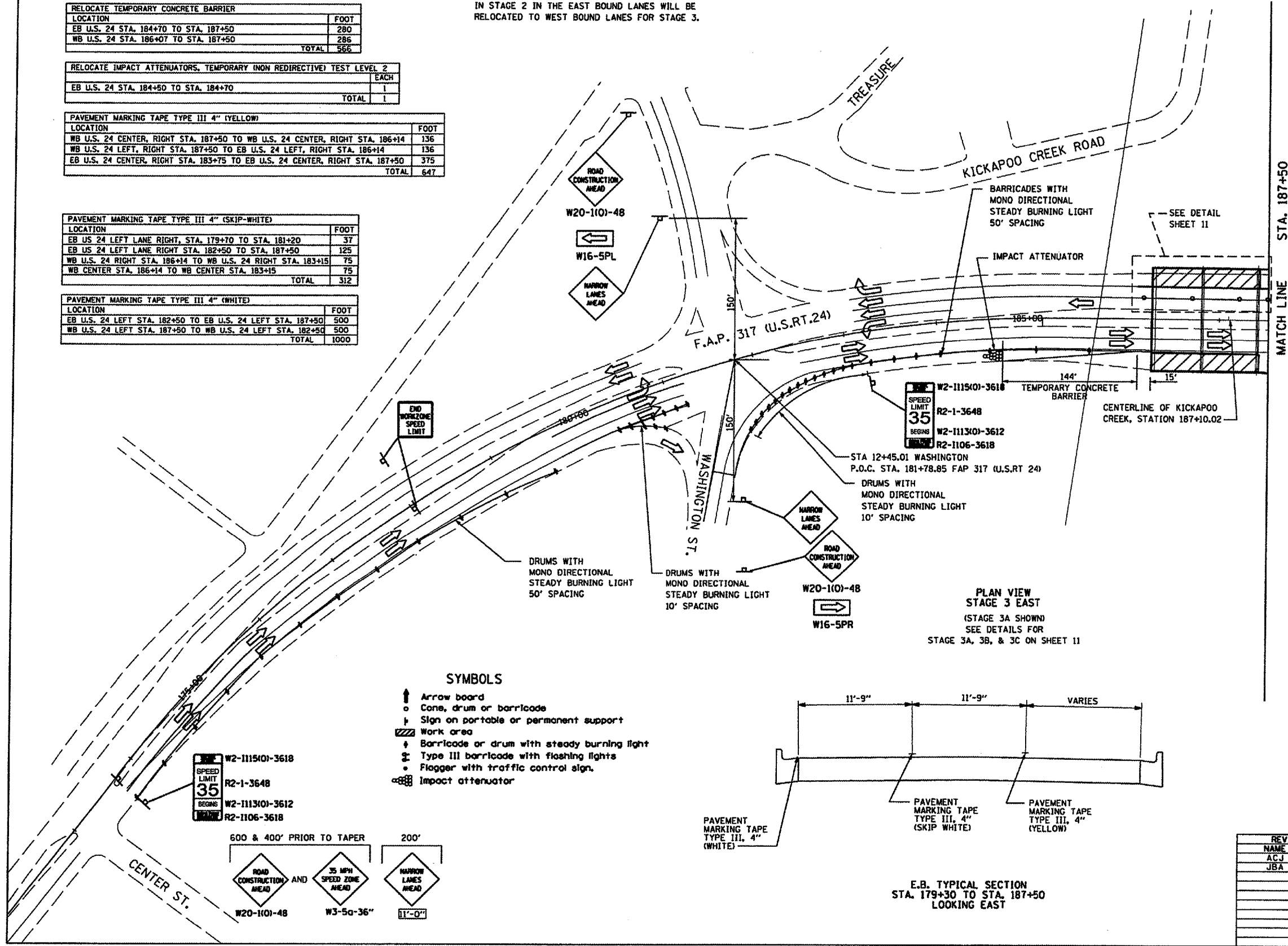
RELOCATE TEMPORARY CONCRETE BARRIER	
LOCATION	FOOT
EB U.S. 24 STA. 184+70 TO STA. 187+50	280
WB U.S. 24 STA. 186+07 TO STA. 187+50	286
TOTAL	566

RELOCATE IMPACT ATTENUATORS, TEMPORARY (NON REDIRECTIVE) TEST LEVEL 2	
LOCATION	EACH
EB U.S. 24 STA. 184+50 TO STA. 184+70	1
TOTAL	1

PAVEMENT MARKING TAPE TYPE III 4" (YELLOW)	
LOCATION	FOOT
WB U.S. 24 CENTER, RIGHT STA. 187+50 TO WB U.S. 24 CENTER, RIGHT STA. 186+14	136
WB U.S. 24 LEFT, RIGHT STA. 187+50 TO EB U.S. 24 LEFT, RIGHT STA. 186+14	136
EB U.S. 24 CENTER, RIGHT STA. 183+75 TO EB U.S. 24 CENTER, RIGHT STA. 187+50	375
TOTAL	647

PAVEMENT MARKING TAPE TYPE III 4" (SKIP-WHITE)	
LOCATION	FOOT
EB US 24 LEFT LANE RIGHT, STA. 179+70 TO STA. 181+20	37
EB US 24 LEFT LANE RIGHT STA. 182+50 TO STA. 187+50	125
WB U.S. 24 RIGHT STA. 186+14 TO WB U.S. 24 RIGHT STA. 183+15	75
WB CENTER STA. 186+14 TO WB CENTER STA. 183+15	75
TOTAL	312

PAVEMENT MARKING TAPE TYPE III 4" (WHITE)	
LOCATION	FOOT
EB U.S. 24 LEFT STA. 182+50 TO EB U.S. 24 LEFT STA. 187+50	500
WB U.S. 24 LEFT STA. 187+50 TO WB U.S. 24 LEFT STA. 182+50	500
TOTAL	1000

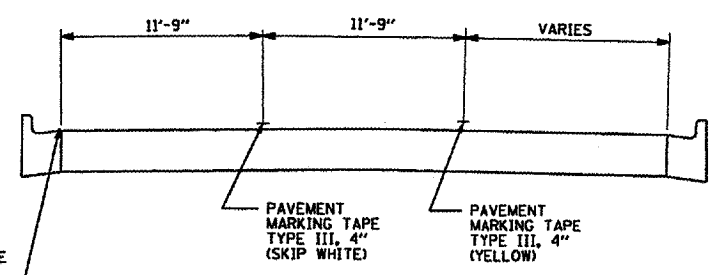


FLOW OF TRAFFIC:  
 U.S. RT. 24  
 E.B. - FROM STA. 176+00 TO STA. 181+00, THE LEFT AND CENTER LANES SHALL BE THROUGH TRAFFIC.  
 SEE SHEET 10 FOR W.B. FLOW OF TRAFFIC.

STANDARDS:  
 USE STANDARD 701601 OR 701426 DURING THE SETUP OF STAGE 3 TRAFFIC CONTROL.  
 STAGE 3 TRAFFIC CONTROL AND PROTECTION DEVICES SHALL BE AS SHOWN ON THESE PLANS AND PER STANDARD 701601.  
 (ALL TRAFFIC CONTROL MEASURES SHOWN IN STANDARD 701601 AND ON THE STAGE 3 DIAGRAMS WILL BE PAID UNDER TRAFFIC CONTROL AND PROTECTION).  
 USE STANDARD 701601 DURING TEMPORARY LANE CLOSURES WHEN LOADING/UNLOADING TRUCKS.

NOTE:  
 1. ANY EQUIPMENT, SUCH AS CRANES OR EXCAVATORS, USED TO LOAD OR UNLOAD TRUCKS, SHALL REMAIN BEHIND THE TEMPORARY CONCRETE BARRIERS AT ALL TIMES.  
 2. EXISTING PAVEMENT MARKINGS THAT CONFLICT WITH STAGING PAVEMENT SHALL BE REMOVED. THIS SHALL BE PAID FOR AS WORK ZONE PAVEMENT MARKING REMOVAL.  
 3. STANDARD 701601 MAY BE USED DAILY IN EACH DIRECTION ACCORDING TO THE FOLLOWING SCHEDULE:  
 E.B. 8:30 AM TO 3:30 PM  
 W.B. REMOVED BY 3:30 PM

- SYMBOLS**
- ↑ Arrow board
  - Cone, drum or barricade
  - ⊥ Sign on portable or permanent support
  - ▨ Work area
  - ⊥ Barricade or drum with steady burning light
  - ⊥ Type III barricade with flashing lights
  - ⊥ Flogger with traffic control sign.
  - ⊥ Impact attenuator



REVISIONS	
NAME	DATE
ACJ	6/30/06
JBA	11/14/06

ILLINOIS DEPARTMENT OF TRANSPORTATION  
 MAINTENANCE OF TRAFFIC STAGE 3  
 F.A.P. 317 (U.S. RTE. 24)  
 STRUCTURE 072-0134  
 PEORIA COUNTY, ILLINOIS  
 STATION 187+10.02

SCALE: VERT. \_\_\_\_\_  
 HORIZ. \_\_\_\_\_  
 DATE \_\_\_\_\_

DRAWN BY JLP  
 CHECKED BY JRG/JFS