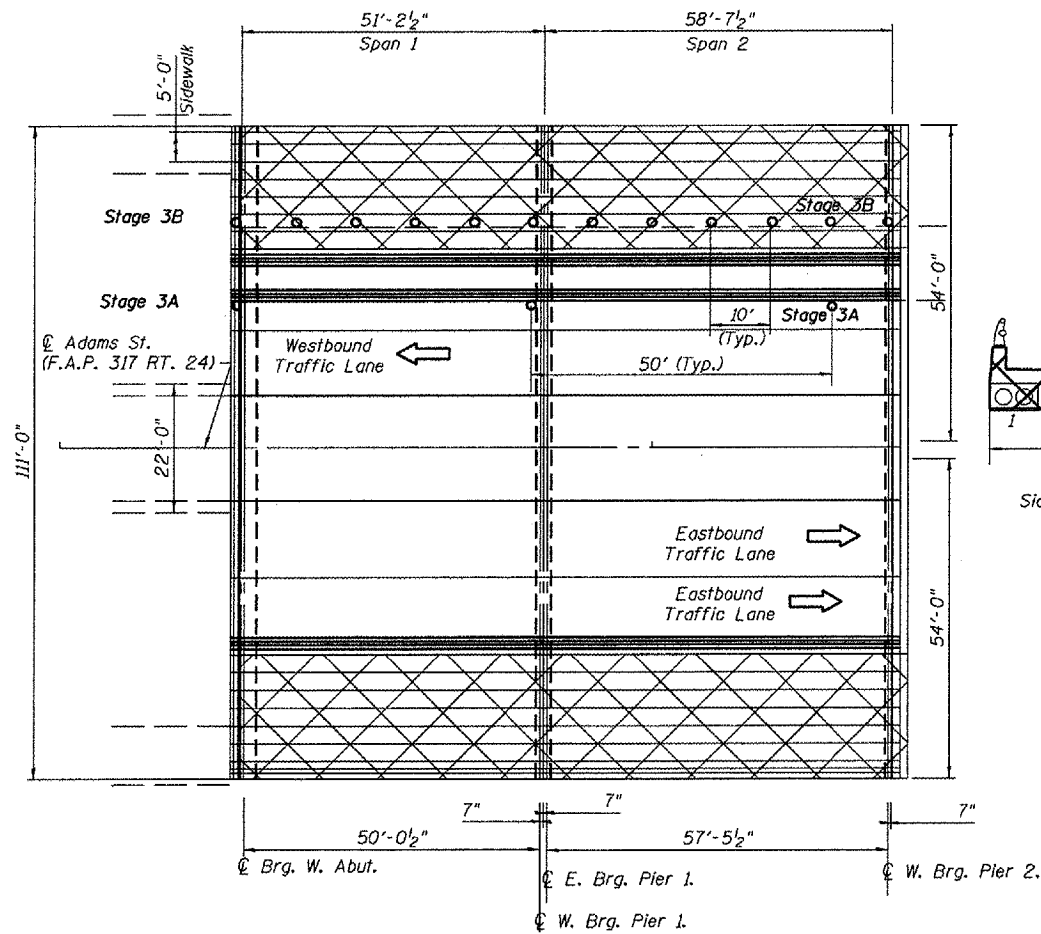


STATE OF ILLINOIS
DEPARTMENT OF TRANSPORTATION

ROUTE NO. F.A.P. 317	SECTION (48B)1	COUNTY PEORIA	DIST. 29	SHEET 16	SHEET NO. 4
FED. ROAD DIST. NO. 7					ILLINOIS
FED. AID PROJECT -					
D-94-062-05					



**PARTIAL PLAN VIEW SPAN 1 & SPAN 2
STAGE 3A SHOWN**

STAGE 3A

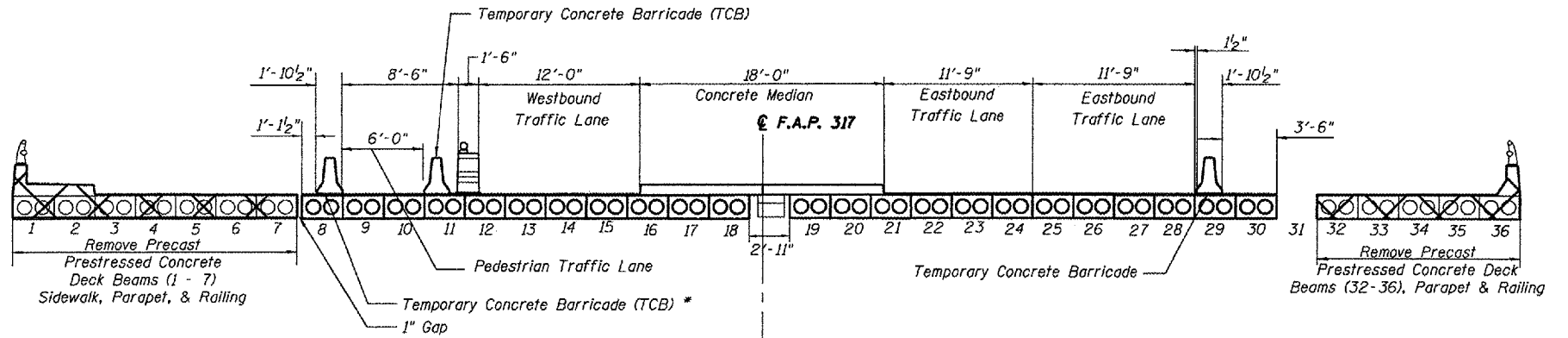
During removal and replacement of Beams 1 thru 7, Contractor shall reduce W.B. traffic to one (1) 12' lane utilizing Temporary Concrete Barriers (TCB) to accommodate pedestrian traffic

STAGE 3B

Upon removal and replacement of Beams 1a thru 7, Contractor shall add drums to the north edge of beam 6, placing pedestrian traffic between the drums and the TCB, and return W.B. traffic to two (2) 11'-0" lanes.

STAGE 3C

Contractor shall direct pedestrian traffic to use the sidewalk upon completion of cast in place concrete sidewalk, parapet and railing.



**REMOVAL
SPAN 1 SHOWN SPAN 2 SIMILAR**

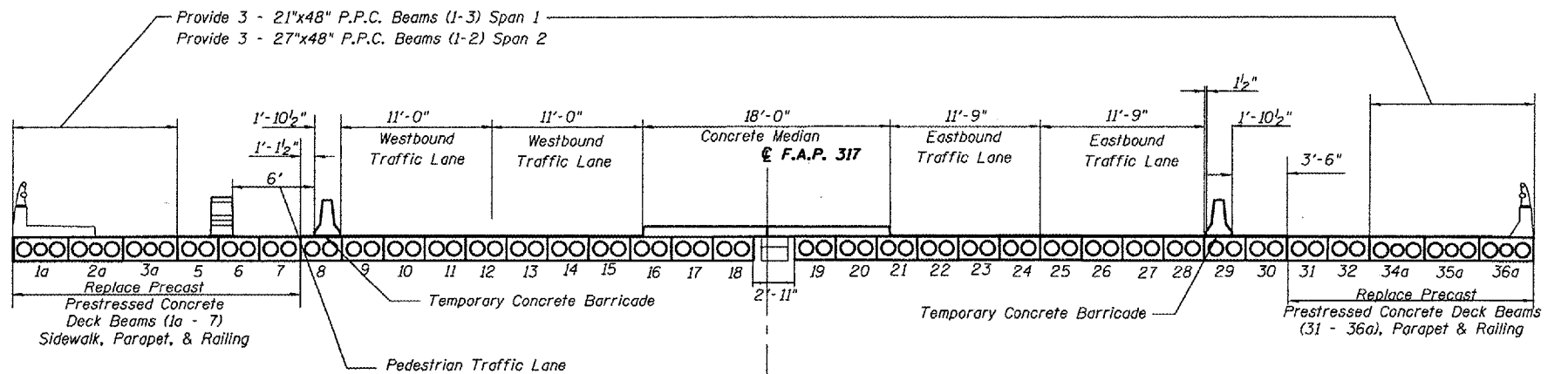
* Contractor shall restrain the TCB by either Detail 1 shown on sheet 16 or by leaving Beam 7 in place until the new beam is delivered, and installed.

NOTE:
At Pier 1, burn existing dowel rods flush with surface of existing pier cap. Grind existing dowel rods smooth and seal with epoxy prior to placement of PPC Deck Beams during Stage 3. Cost is included with Removal of Existing Superstructures.

**STAGE 3
LOOKING EAST**

Retainer Angle Note:

Retainer angles are required where shown at Abutment and Pier 2. See details on sheet 5.



**PROPOSED CONSTRUCTION
SPAN 1 SHOWN SPAN 2 SIMILAR**

**STAGE 3
LOOKING EAST**

**STAGE 3 REMOVAL AND CONSTRUCTION
F.A.P. 317 (U.S. RTE. 24)
STRUCTURE 072-0134
PEORIA COUNTY, ILLINOIS
STATION 187+10.02**

DESIGNED	- JRG
CHECKED	- JFS
DRAWN	- ACJ
CHECKED	- JRG/JFS