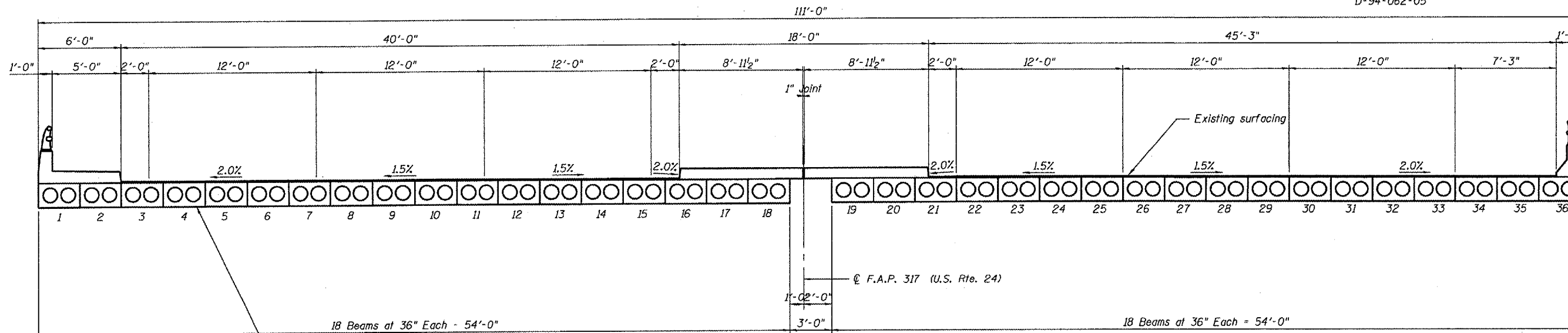


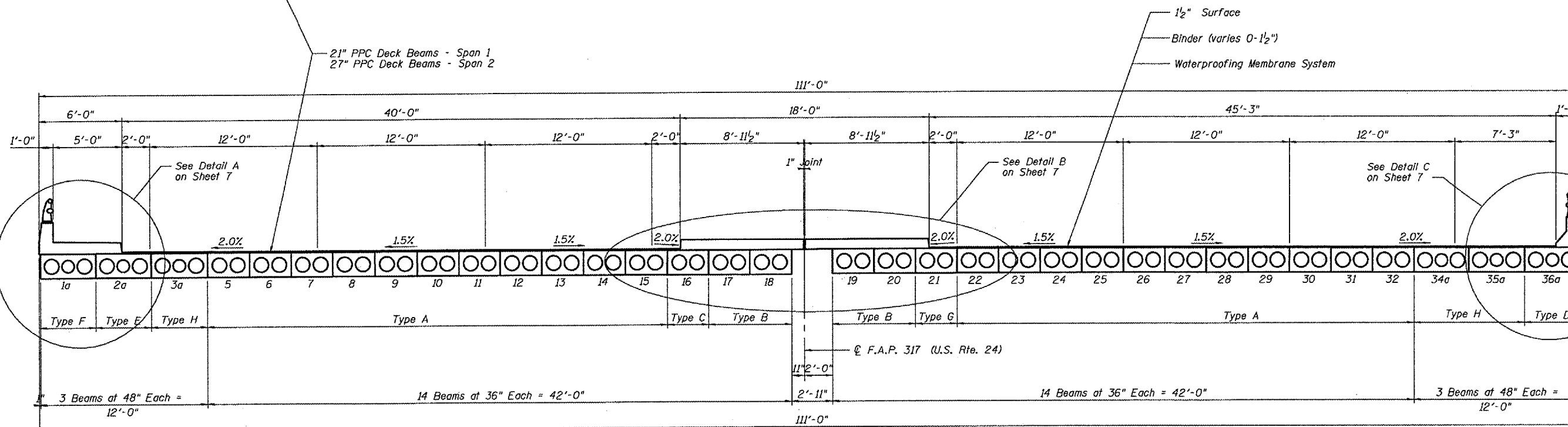
STATE OF ILLINOIS  
DEPARTMENT OF TRANSPORTATION

ROUTE NO.	SECTION	COUNTY	DATE	SHEET	SHEET NO.
F.A.P. 317	(480)I	PEORIA	29	18	6
FED. ROAD DIST. NO. 7	ILLINOIS	FED. AID PROJECT-			16 SHEETS

D-94-062-05



EXISTING TYPICAL SECTION  
LOOKING E.B.



PROPOSED TYPICAL SECTION  
LOOKING E.B.

Deck beam numbers 4 & 33 intentionally missing

TYPICAL BRIDGE SECTION  
F.A.P. 317 (U.S. RTE. 24)  
STRUCTURE 072-0134  
PEORIA COUNTY, ILLINOIS  
STATION 187+10.02

DESIGNED	-	JRG
CHECKED	-	JFS
DRAWN	-	ACJ
CHECKED	-	JRG/JFS