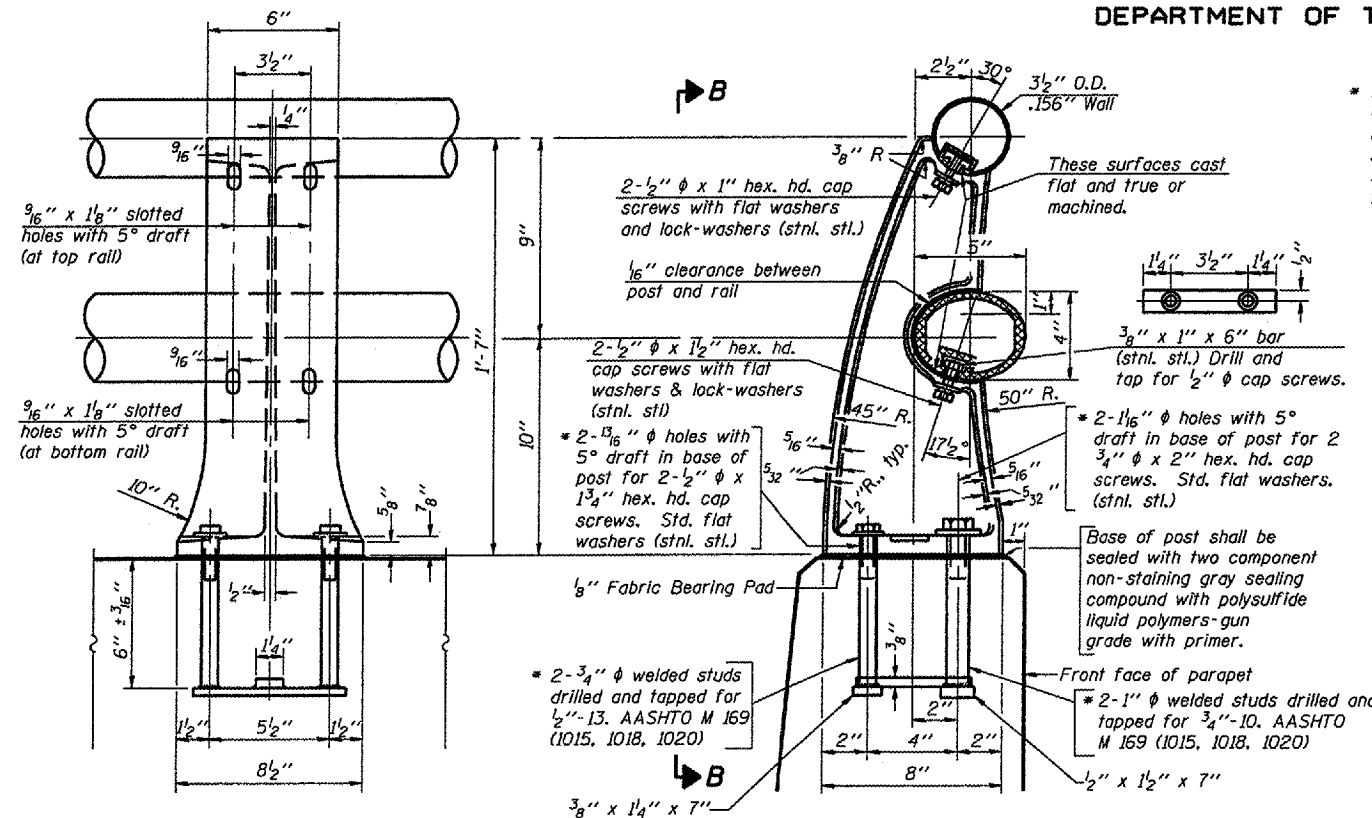


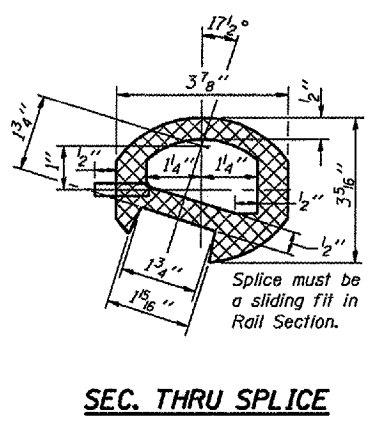
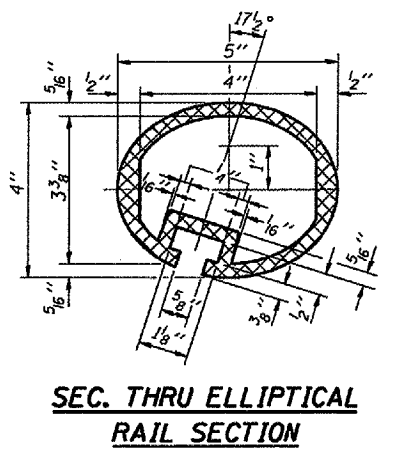
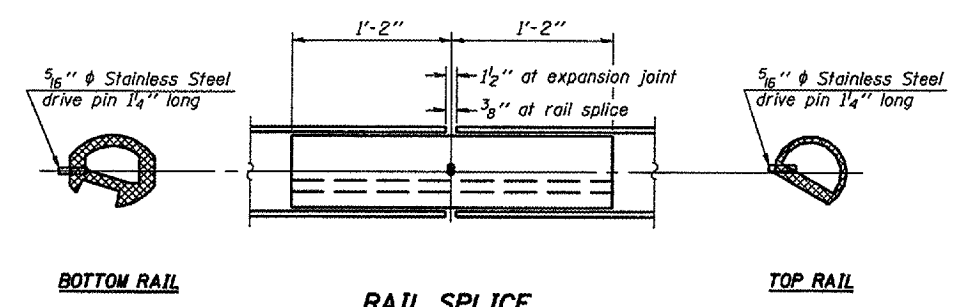
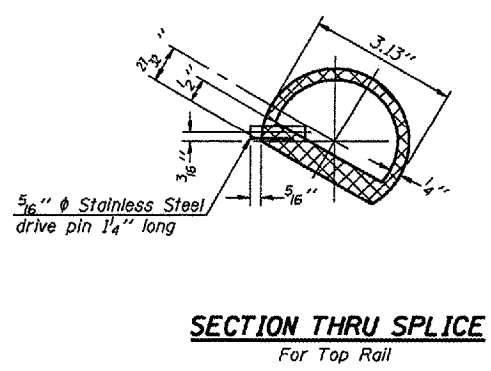
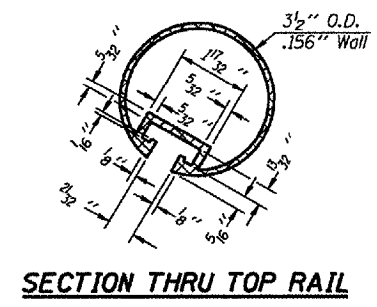
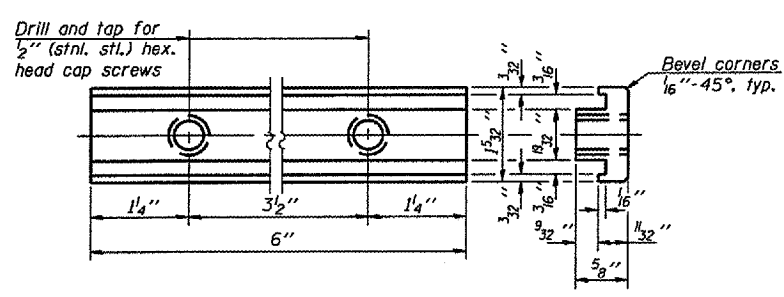
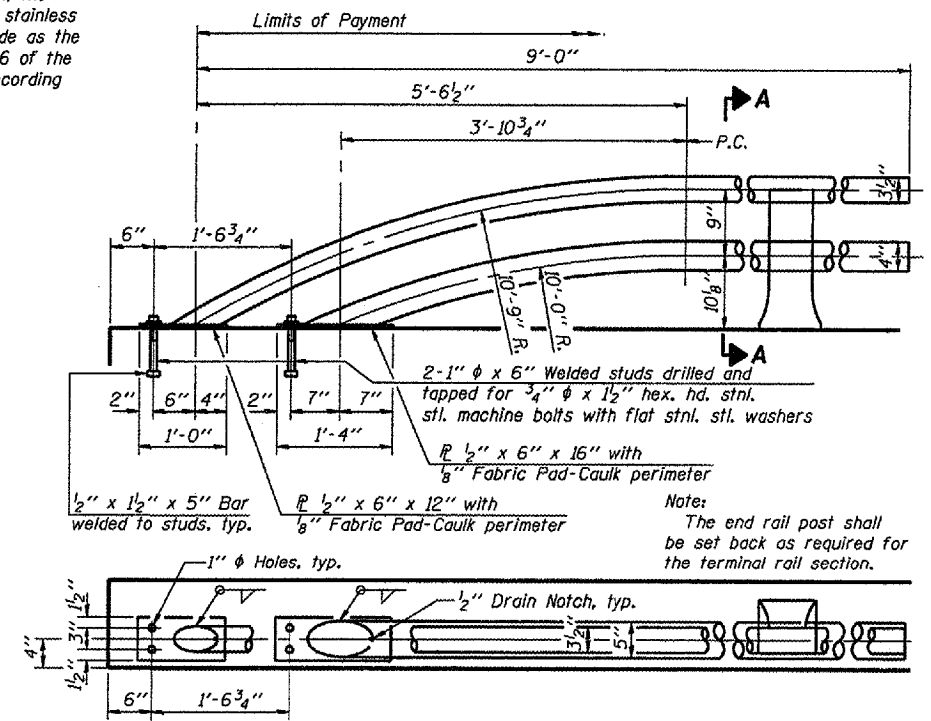
STATE OF ILLINOIS
DEPARTMENT OF TRANSPORTATION

ROUTE NO.	SECTION	COUNTY	SHEETS	"OF"	SHEET NO. 14
F.A.P. 317	(48B)I	PEORIA	29	26	16 SHEETS
FED. ROAD DIST. NO. 7	ILLINOIS	FED. AID PROJECT-			

D-94-062-05



* In lieu of the cast-in-place anchor device shown, the Contractor has the option of drilling and setting stainless steel anchor rods of the same diameter and grade as the specified cap screws according to Article 509.06 of the Standard Specifications. Embedment shall be according to the manufacturer's specifications.



BILL OF MATERIAL

Item	Unit	Quantity
Connector for each Type L Aluminum Railing	Each	22
Removing and re-erecting existing Railing	Foot	220

Notes:
All Posts shall be normal to parapet.
All joints in rail shall be spliced per detail.
Provide 1-1/8" and 2-1/8" Aluminum Shims for 25% of the Posts. Rail elements shall be parallel to Grade-high spots will be ground and low spots shimmed.
See sheet 8 of 16 for rail post spacing.
Existing railing shall be removed & re-erected, and will be paid for at the contract price per foot for removing & re-erecting existing railing.

TYPE L ALUMINUM RAILING
F.A.P. 317 (U.S. RTE. 24)
STRUCTURE 072-0134
PEORIA COUNTY, ILLINOIS
STATION 187+10.02

DESIGNED - JRG
CHECKED - JFS
DRAWN - ARA
CHECKED - JRG
R-20

11-1-06 (7'-0" to 10'-0" Post spacing)