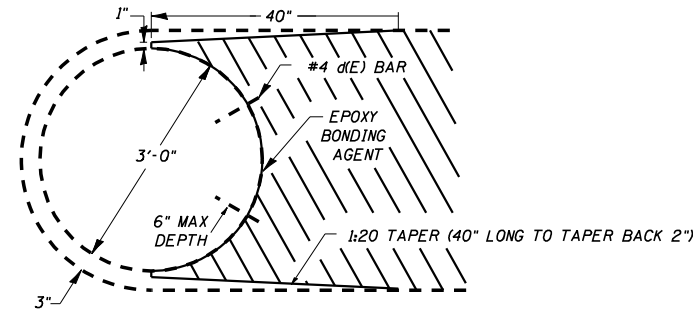
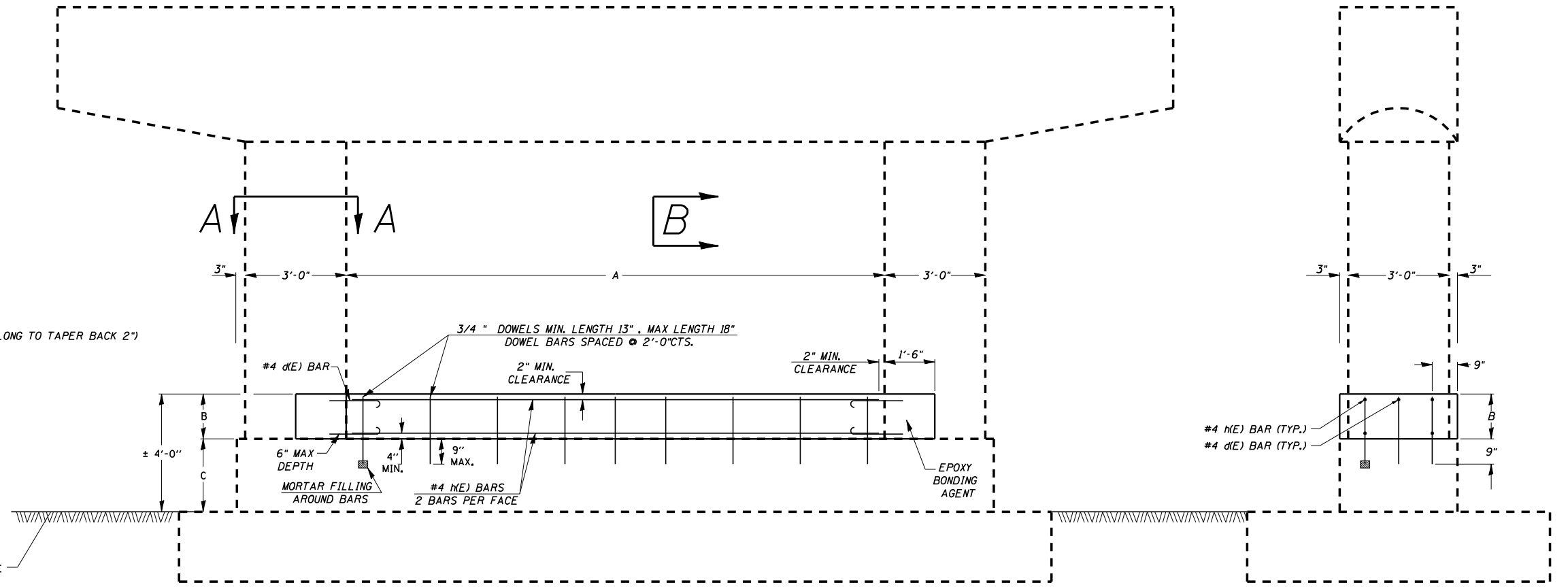


F.A.I. RTE.	SECTION	COUNTY	TOTAL SHEETS	SHEET NO.
74		CHAMPAIGN	19	12



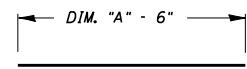
TOP VIEW OF EXTENSION
A - A



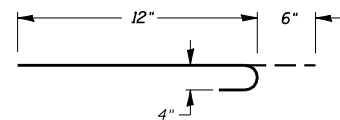
SIDE VIEW

CENTER CROSS SECTION

B - B



BAR h(E)



BAR d(E)

SURFACE AREA FOR EXTENSION

	AREA SQIN	AREA SQFT	AREA SQYD
16' PIER	8398	58.3	6.5
18' PIER	9406	65.3	7.3

GENERAL NOTES

CLASS SI CONCRETE SHALL BE USED THROUGHOUT.

DOWEL BARS SHALL CONFORM TO STATE SPECIFICATIONS. THE DOWELS ARE TO BE PLACED IN THE CRASHWALL IN PREDRILLED HOLES AND MORTARED AS SHOWN IN THE DETAIL. THE DOWELS SHALL NOT BE PAID FOR SEPARATELY BUT SHALL BE CONSIDERED INCIDENTAL TO THE CONTRACT UNIT PRICE PER CUBIC YARD FOR CLASS SI CONCRETE WHICH PRICE SHALL INCLUDE THE MATERIALS AND LABOR REQUIRED FOR THE INSTALLATION OF THE DOWELS.

DRILLED HOLES FOR DOWEL BARS SHALL BE NOMINAL 1" (25 mm) DIAMETER.

ALL DOWEL BARS SHALL BE EPOXY COATED.

REINFORCEMENT BARS SHALL CONFORM TO THE REQUIREMENTS OF AASHTO W31, M42 OR M53 GRADE 60.

PLAN DIMENSIONS AND DETAILS RELATIVE TO EXISTING STRUCTURE HAVE BEEN TAKEN FROM EXISTING PLANS AND ARE SUBJECT TO NOMINAL CONSTRUCTION VARIATIONS. IT SHALL BE THE CONTRACTOR'S RESPONSIBILITY TO VERIFY SUCH DIMENSIONS AND DETAILS IN THE FIELD AND MAKE NECESSARY APPROVED ADJUSTMENTS PRIOR TO CONSTRUCTION OR ORDERING OF MATERIALS. SUCH VARIATIONS SHALL NOT BE CAUSE FOR ADDITIONAL COMPENSATION FOR A CHANGE IN THE SCOPE OF THE WORK. HOWEVER, THE CONTRACTOR WILL BE PAID FOR THE QUANTITY ACTUALLY FURNISHED AT THE UNIT PRICE FOR THE WORK.

PIER COLUMN SHALL BE COATED WITH EPOXY BONDING AGENT TO IMPROVE ADHESION OF NEW CONCRETE TO OLD. THIS WORK INCIDENTAL TO SI CONCRETE.

Note: All dimensions are in INCHES (millimeters) unless otherwise shown.

STRUCTURE STATION	LOC.	DIMENSION			AREA		CLASS SI CONC. (CUYD)	BAR QTY SIZE LENGTH SHAPE LBS											
		A (FT)	B (FT)	C (FT)	(SQYD)	(CUYD)		BAR QTY	SIZE	LENGTH	SHAPE	LBS							
010-0175 430+69.49	WB	16' 0"	1' 10"	2' 2"	6.5	3.96	d(E)	8	#4	1' 6"	U	8.0	h(E)	5	#4	15' 6"	—	51.8	
	MED	16' 0"	1' 7"	2' 5"	6.5	3.42	d(E)	8	#4	1' 6"	U	8.0	h(E)	5	#4	15' 6"	—	51.8	
	EB	16' 0"	1' 9"	2' 3"	6.5	3.78	d(E)	8	#4	1' 6"	U	8.0	h(E)	5	#4	15' 6"	—	51.8	
010-0177 483+83.09	WB	16' 0"	1' 9"	2' 3"	6.5	3.78	d(E)	8	#4	1' 6"	U	8.0	h(E)	5	#4	15' 6"	—	51.8	
	MED	16' 0"	1' 2"	2' 10"	6.5	2.52	d(E)	8	#4	1' 6"	U	8.0	h(E)	5	#4	15' 6"	—	51.8	
	EB	16' 0"	2' 1"	1' 11"	6.5	4.50	d(E)	8	#4	1' 6"	U	8.0	h(E)	5	#4	15' 6"	—	51.8	
010-0178 536+96.70	WB	16' 0"	1' 7"	2' 5"	6.5	3.42	d(E)	8	#4	1' 6"	U	8.0	h(E)	5	#4	15' 6"	—	51.8	
	MED	16' 0"	0' 11"	3' 1"	6.5	1.98	d(E)	8	#4	1' 6"	U	8.0	h(E)	5	#4	15' 6"	—	51.8	
	EB	16' 0"	1' 10"	2' 2"	6.5	3.96	d(E)	8	#4	1' 6"	U	8.0	h(E)	5	#4	15' 6"	—	51.8	
010-0153 592+57.00	WB	18' 0"	2' 1"	1' 11"	7.3	5.07	d(E)	8	#4	1' 6"	U	8.0	h(E)	5	#4	17' 6"	—	58.5	
	MED	18' 0"	1' 6"	2' 6"	7.3	3.65	d(E)	8	#4	1' 6"	U	8.0	h(E)	5	#4	17' 6"	—	58.5	
	EB	18' 0"	2' 1"	1' 11"	7.3	5.07	d(E)	8	#4	1' 6"	U	8.0	h(E)	5	#4	17' 6"	—	58.5	
010-0180 645+81.00	WB	16' 0"	1' 10"	2' 2"	6.5	3.96	d(E)	8	#4	1' 6"	U	8.0	h(E)	5	#4	15' 6"	—	51.8	
	MED	16' 0"	1' 4"	2' 8"	6.5	2.88	d(E)	8	#4	1' 6"	U	8.0	h(E)	5	#4	15' 6"	—	51.8	
	EB	16' 0"	1' 10"	2' 2"	6.5	3.96	d(E)	8	#4	1' 6"	U	8.0	h(E)	5	#4	15' 6"	—	51.8	
												LBS =	120.2					LBS =	796.6

CLASS SI CONCRETE TOTAL CUYD = 55.9 CUYD REINFORCEMENT BARS (EPOXY COATED) = 916.8 LBS

ILLINOIS DEPARTMENT OF TRANSPORTATION

CRASHWALL EXTENSION
(TWO CIRCULAR COLUMN
PIER)

DISTRICT 5 DETAIL NO. XX002909A

DESIGNER NOTE:

PLOT DATE = 3/30/2007
FILE NAME = c:\projects\590307 (B)\70633.crashwall detail.dgn
PLOT SCALE = 46.5882 / IN.
USER NAME = sheehy