

F.A.I. RTE.	SECTION	COUNTY	TOTAL SHEETS	SHEET NO.
74	*	MCLEAN	49	1

* (57-21B&57-22B)&BDR

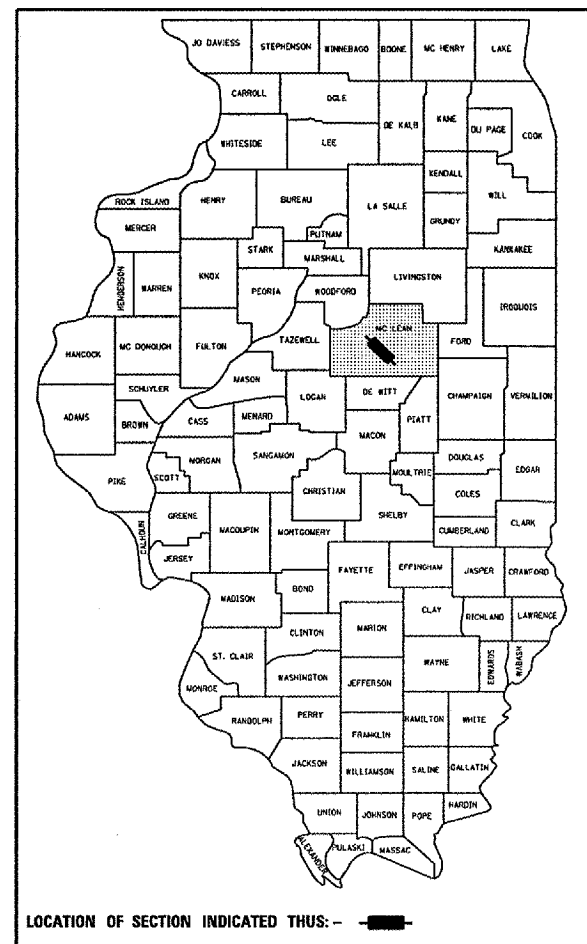
STATE OF ILLINOIS
DEPARTMENT OF TRANSPORTATION

DIVISION OF HIGHWAYS

**PROPOSED
HIGHWAY PLANS**

**F.A.I. ROUTE 74
SECTION (57-21B&57-22B)&BDR
MCLEAN COUNTY**

D-95-011-07



FOR INDEX OF SHEETS, SEE SHEET NO. 2
FOR SUMMARY OF QUANTITIES, SEE SHEET NO. 4

C-95-011-07

(BRIDGE DECK REPAIRS) LITTLE KICKAPOO CREEK
1.1 MI, 5.9 MI & 7.6 MI EAST OF US 51



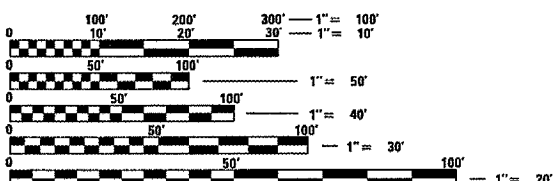
CURRENT TRAFFIC DATA		
	LEG "A"	LEG "B"
CURRENT ADT	16,500	18,400
20 YR ADT	25,900	27,000
PU & PC %	58.1	62.1
SU %	5.5	5.1
MU %	36.4	32.8

DESIGN DESIGNATION
NA

STRUCTURE NO. 057-0120 (EB)
STRUCTURE NO. 057-0121 (WB)
SECTION 57-21B
STA 779+67.64 TO STA 781+29.22

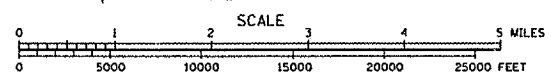
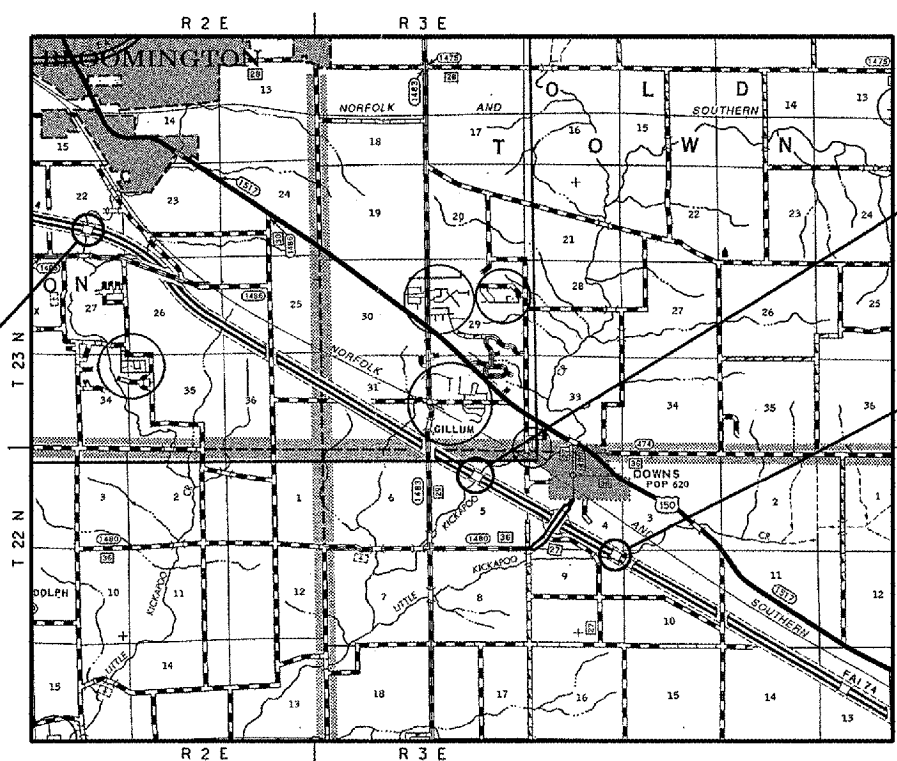
STRUCTURE NO. 057-0126 (WB)
SECTION 57-22B
STA 1038+04.25 TO 1039+95.75

STRUCTURE NO. 057-0129 (WB)
SECTION 57-22B-1
STA 1126+76.21 TO 1127+85.71



FULL SIZE PLANS HAVE BEEN PREPARED USING STANDARD ENGINEERING SCALES. REDUCED SIZED PLANS WILL NOT CONFORM TO STANDARD SCALES. IN MAKING MEASUREMENTS ON REDUCED PLANS, THE ABOVE SCALES MAY BE USED.

J.U.L.I.E.
JOINT UTILITY LOCATION INFORMATION FOR EXCAVATION
1-800-892-0123



TOTAL LENGTH OF SECTION & PROJECT = 624.16 FEET = 0.118 MILES
NET LENGTH OF SECTION & PROJECT = 624.16 FEET = 0.118 MILES

STATE OF ILLINOIS
DEPARTMENT OF TRANSPORTATION
DIVISION OF HIGHWAYS

SUBMITTED MARCH 30, 2007
Joseph E. Lowe Jr.
DEPUTY DIRECTOR OF HIGHWAYS, REGION THREE ENGINEER

May 11, 2007
Eric E. Harn
ENGINEER OF DESIGN AND ENVIRONMENT

May 11, 2007
Milton R. Sees, P.E.
DIRECTOR OF HIGHWAYS, CHIEF ENGINEER

**PRINTED BY THE AUTHORITY
OF THE STATE OF ILLINOIS**

CONTRACT NO. 70641

PROJECT ENGINEER: TIM BRANDENBURG (217)465-4181

SQUAD LEADER: JEFF SHERER

DESIGNER: RANDY AUSTIN