

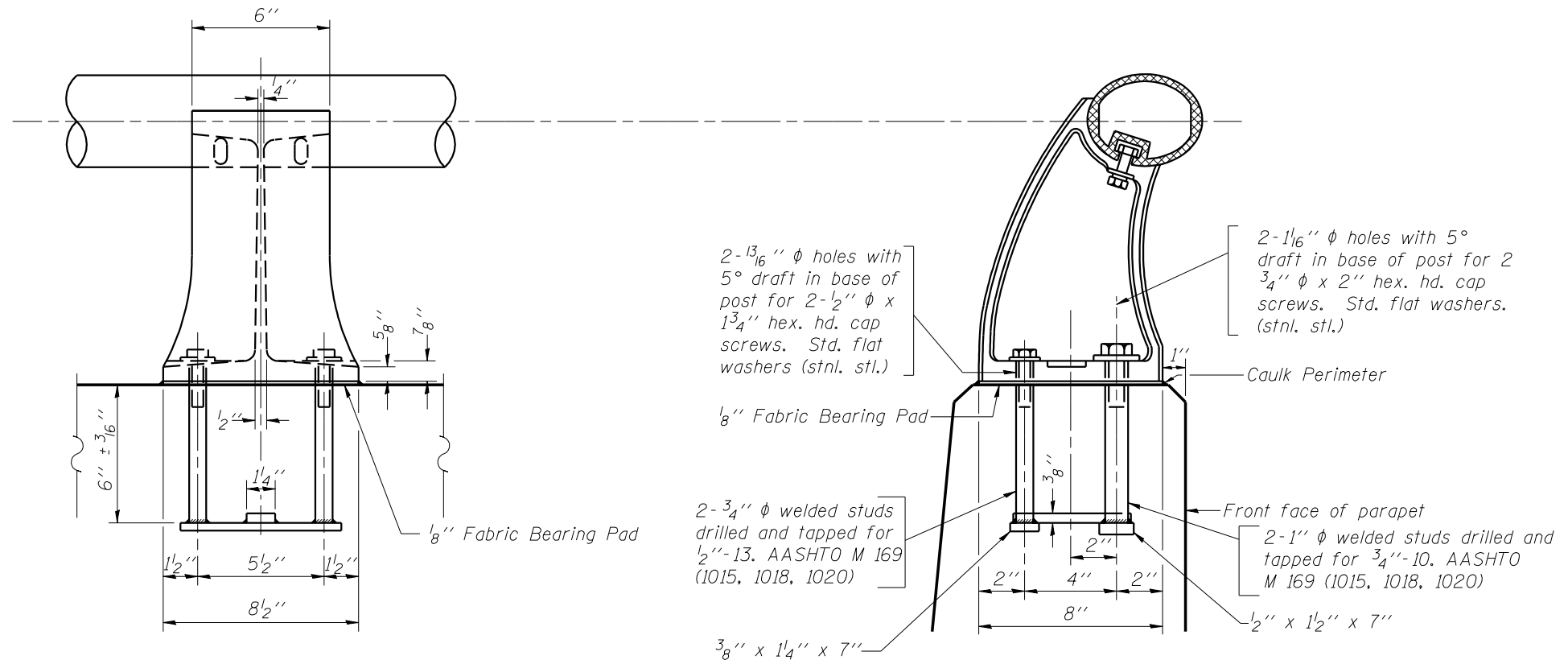
F.A.I. RTE.	SECTION	COUNTY	TOTAL SHEETS	SHEET NO.
74	*	MCLEAN	49	41

\* (57-21B&57-22B)&BDR

SHEET 13 OF 14

# DETAIL FOR ANCHORAGE OF POST

## SN 057-0129



ANCHORAGE OF POSTS

PLOT DATE : 3/26/2007  
 FILE NAME : c:\p\projects\0501187 (c)1\70641cover.dgn  
 PLOT SCALE : 1/8"=1'-0"  
 USER NAME : creigr

ILLINOIS DEPARTMENT OF TRANSPORTATION  
 DETAIL FOR ANCHORAGE OF POST  
 F.A.I. ROUTE 74  
 SECTION (57-21B&57-22B)&BDR  
 MCLEAN COUNTY  
 S.N. 057-0129

SCALE: NA  
 DATE: 03/26/07

DRAWN BY: BO/JRP  
 CHECKED BY: