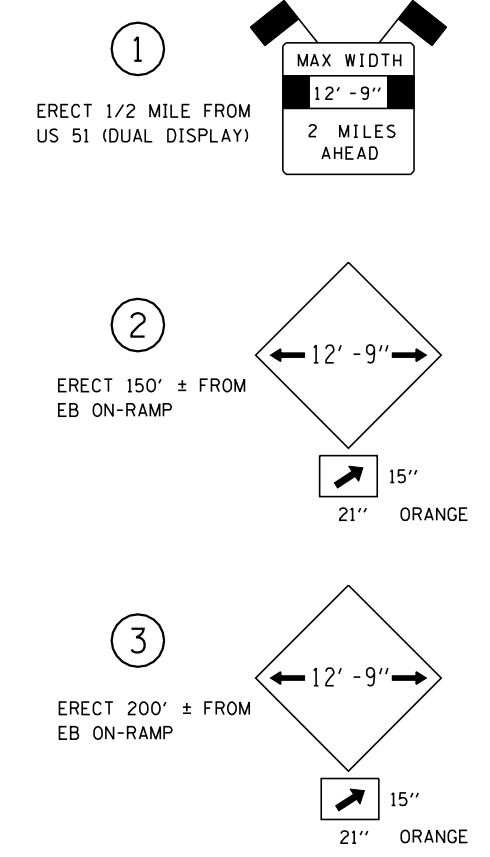
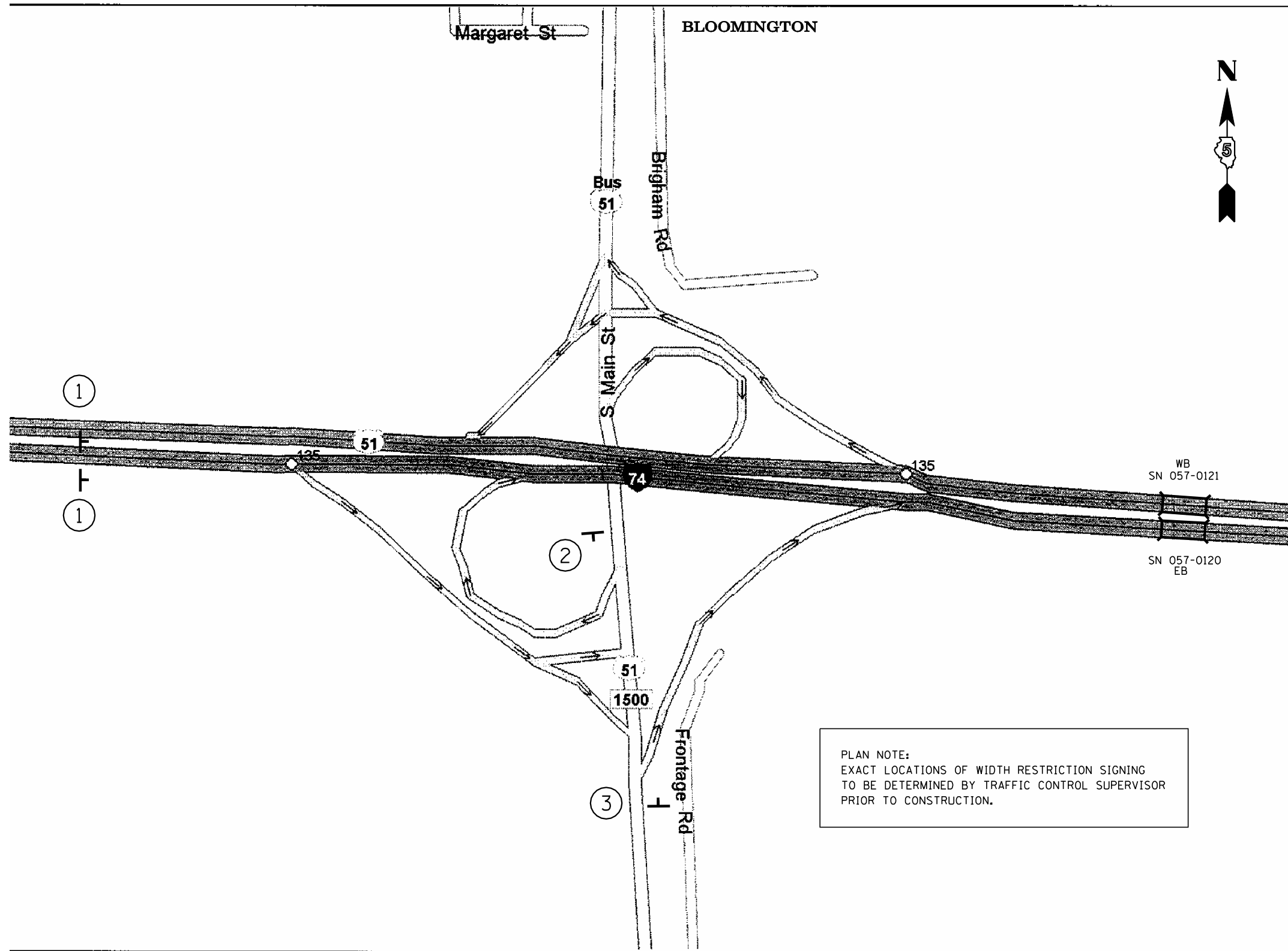


F.A.I. RTE.	SECTION	COUNTY	TOTAL SHEETS	SHEET NO.
74	*	MCLEAN	49	43

* (57-21B&57-22B)&BDR

SHEET 1 OF 4

WIDTH RESTRICTION SIGNING DETAIL STAGE I ONLY



PLAN NOTE:
EXACT LOCATIONS OF WIDTH RESTRICTION SIGNING
TO BE DETERMINED BY TRAFFIC CONTROL SUPERVISOR
PRIOR TO CONSTRUCTION.



ILLINOIS DEPARTMENT OF TRANSPORTATION
WIDTH RESTRICTION SIGNING DETAIL
 F.A.I. ROUTE 74
 SECTION (57-21B&57-22B)&BDR
 MCLEAN COUNTY
 SCALE: NA DRAWN BY: JRP
 DATE: 03/27/07 CHECKED BY:

PLOT DATE : 3/26/2007
 FILE NAME : c:\projects\4591187 (db)\70641cover.dgn
 PLOT SCALE : 1/8"=1'-0" / IN.
 USER NAME : creig