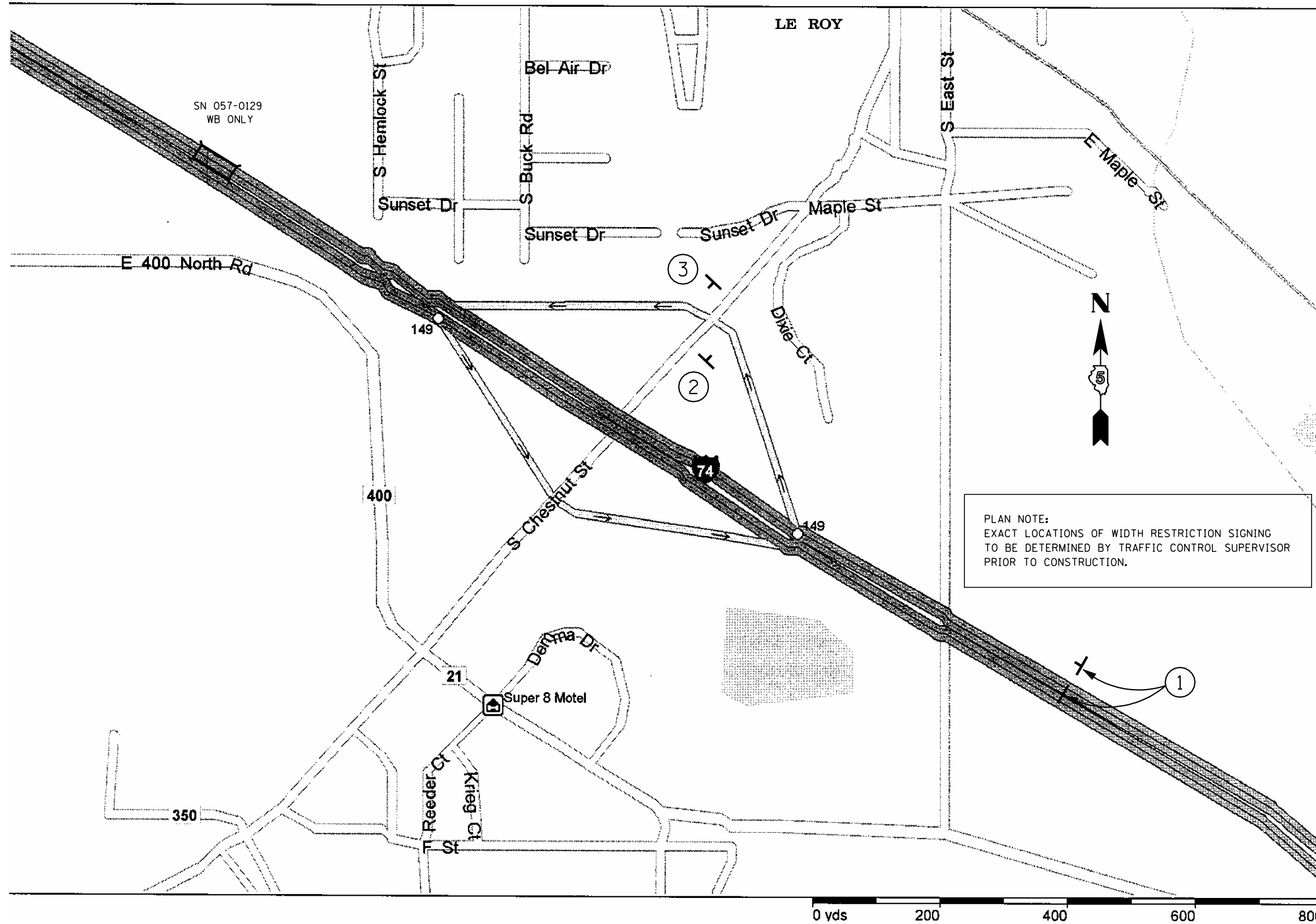


F.A.I. RTE.	SECTION	COUNTY	TOTAL SHEETS	SHEET NO.
74	*	MCLEAN	49	45

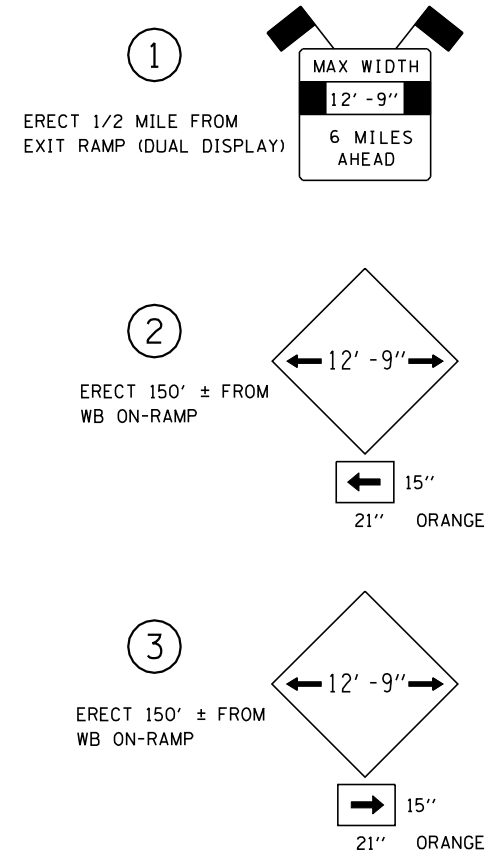
* (57-21B&57-22B)&BDR

SHEET 3 OF 4

WIDTH RESTRICTION SIGNING DETAIL STAGE I ONLY



PLAN NOTE:
EXACT LOCATIONS OF WIDTH RESTRICTION SIGNING
TO BE DETERMINED BY TRAFFIC CONTROL SUPERVISOR
PRIOR TO CONSTRUCTION.



ILLINOIS DEPARTMENT OF TRANSPORTATION
WIDTH RESTRICTION SIGNING DETAIL

F.A.I. ROUTE 74
SECTION (57-21B&57-22B)&BDR
MCLEAN COUNTY

SCALE: NA
DATE: 03/27/07

DRAWN BY: JRP
CHECKED BY:

PLOT DATE : 3/26/2007
FILE NAME : c:\projects\4591187\4591187.dgn
PLOT SCALE : 1/8"=1'-0"
USER NAME : creige