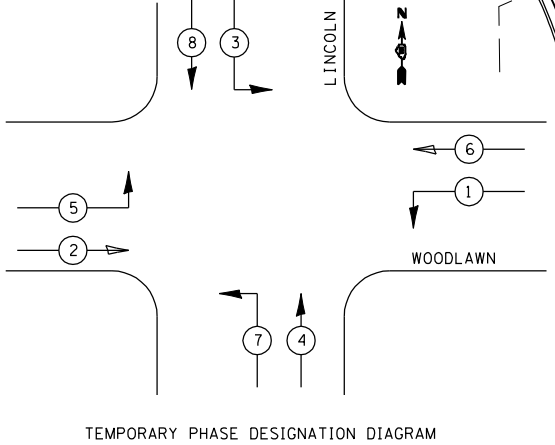
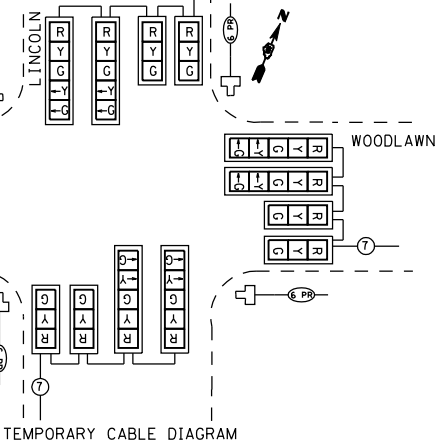
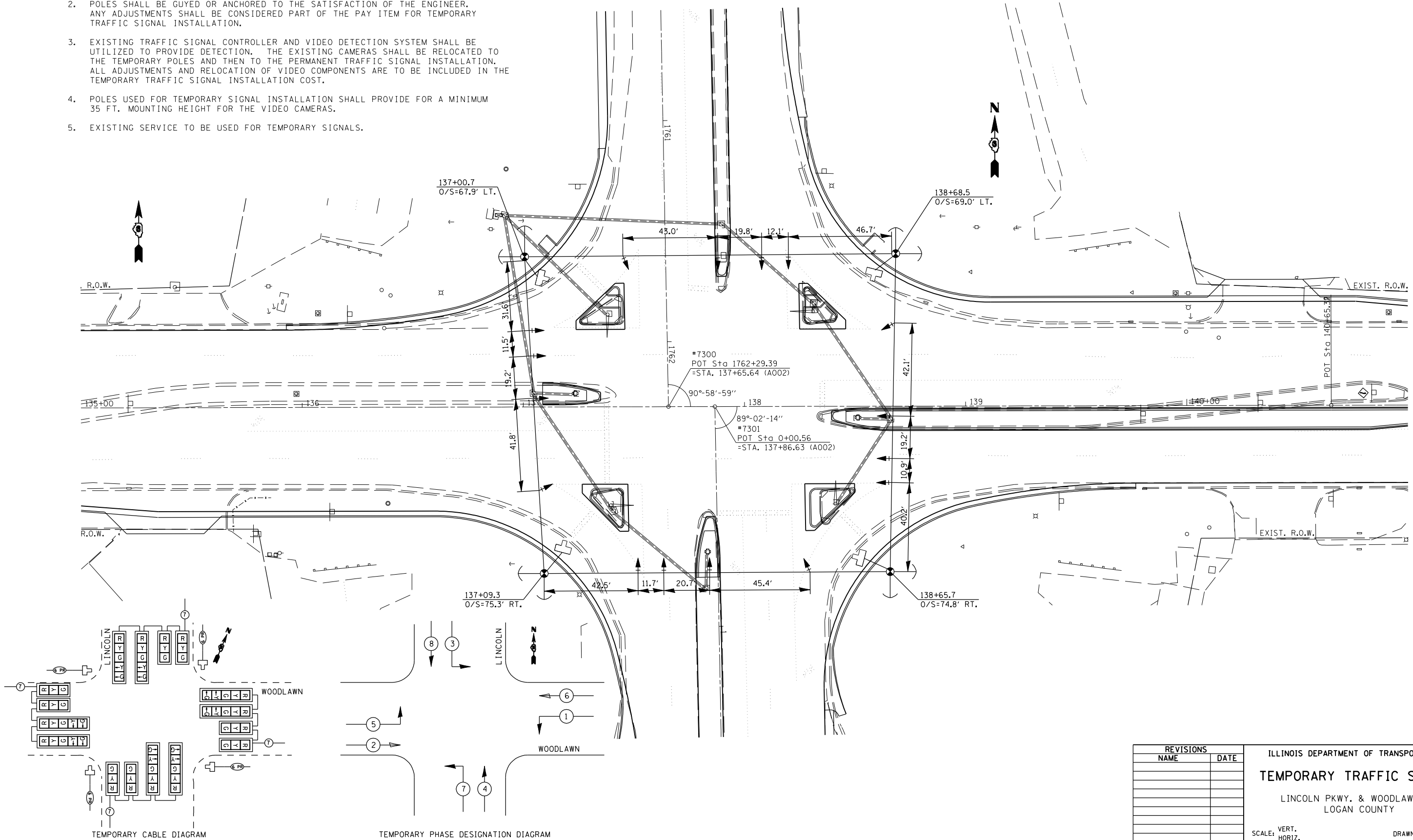


F.A.P. RTE.	SECTION	COUNTY	TOTAL SHEETS	SHEET NO.
320		LOGAN	111	58
STA.		TO STA.		
FED. ROAD DIST. NO.	ILLINOIS	FED. AID PROJECT		
• 103, 22 (I, N, TS)				

TEMPORARY SIGNAL NOTES:

1. TEMPORARY SIGNALS SHALL BE OPERATIONAL PRIOR TO REMOVAL OF EXISTING SIGNALS.
2. POLES SHALL BE GUYED OR ANCHORED TO THE SATISFACTION OF THE ENGINEER. ANY ADJUSTMENTS SHALL BE CONSIDERED PART OF THE PAY ITEM FOR TEMPORARY TRAFFIC SIGNAL INSTALLATION.
3. EXISTING TRAFFIC SIGNAL CONTROLLER AND VIDEO DETECTION SYSTEM SHALL BE UTILIZED TO PROVIDE DETECTION. THE EXISTING CAMERAS SHALL BE RELOCATED TO THE TEMPORARY POLES AND THEN TO THE PERMANENT TRAFFIC SIGNAL INSTALLATION. ALL ADJUSTMENTS AND RELOCATION OF VIDEO COMPONENTS ARE TO BE INCLUDED IN THE TEMPORARY TRAFFIC SIGNAL INSTALLATION COST.
4. POLES USED FOR TEMPORARY SIGNAL INSTALLATION SHALL PROVIDE FOR A MINIMUM 35 FT. MOUNTING HEIGHT FOR THE VIDEO CAMERAS.
5. EXISTING SERVICE TO BE USED FOR TEMPORARY SIGNALS.



PLOT DATE = 3/26/2007
 FILE NAME = c:\projects\65338A\ts_sheets.dgn
 PLOT SCALE = 42.3525' / IN.
 REFERENCE = #REF#

REVISIONS	
NAME	DATE

ILLINOIS DEPARTMENT OF TRANSPORTATION
TEMPORARY TRAFFIC SIGNALS
 LINCOLN PKWY. & WOODLAWN ST.
 LOGAN COUNTY
 SCALE: VERT. DRAWN BY KDA
 HORIZ. CHECKED BY
 DATE: JAN. 2005