

| F.A.I. RTE. | SECTION | COUNTY | TOTAL SHEETS | SHEET NO. |
|-------------|---------|--------|--------------|-----------|
| * | ** | *** | 15 | 1 |

* - FAI 55, FAI 72, FAI 155, FAI 172, FAP 302 (IL 336), FAP 310 (US 67), FAP 75 (IL 29), FAP 745 (IL 104)
 ** D-6 SHOULDER RUMBLE STRIPS
 *** ADAMS, HANCOCK, LOGAN, MACOUPIN, MONTGOMERY, MORGAN, PIKE, SANGAMON & SCOTT

STATE OF ILLINOIS
 DEPARTMENT OF TRANSPORTATION
 DIVISION OF HIGHWAYS

**PROPOSED
 HIGHWAY PLANS**

VARIOUS ROUTES
 (F.A.I. ROUTE 55, 72, 155, 172, FAP 302 (IL 336), FAP 310 (US 67), FAP 75 (IL 29), FAP 745 (IL 104))
 SECTION D-6 SHLOA RUMBLE STRIPS 2007
 PROJECT: *HSIP-IM-0005(545)*

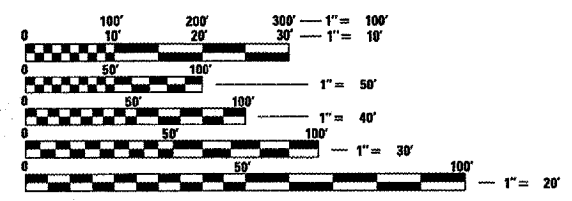
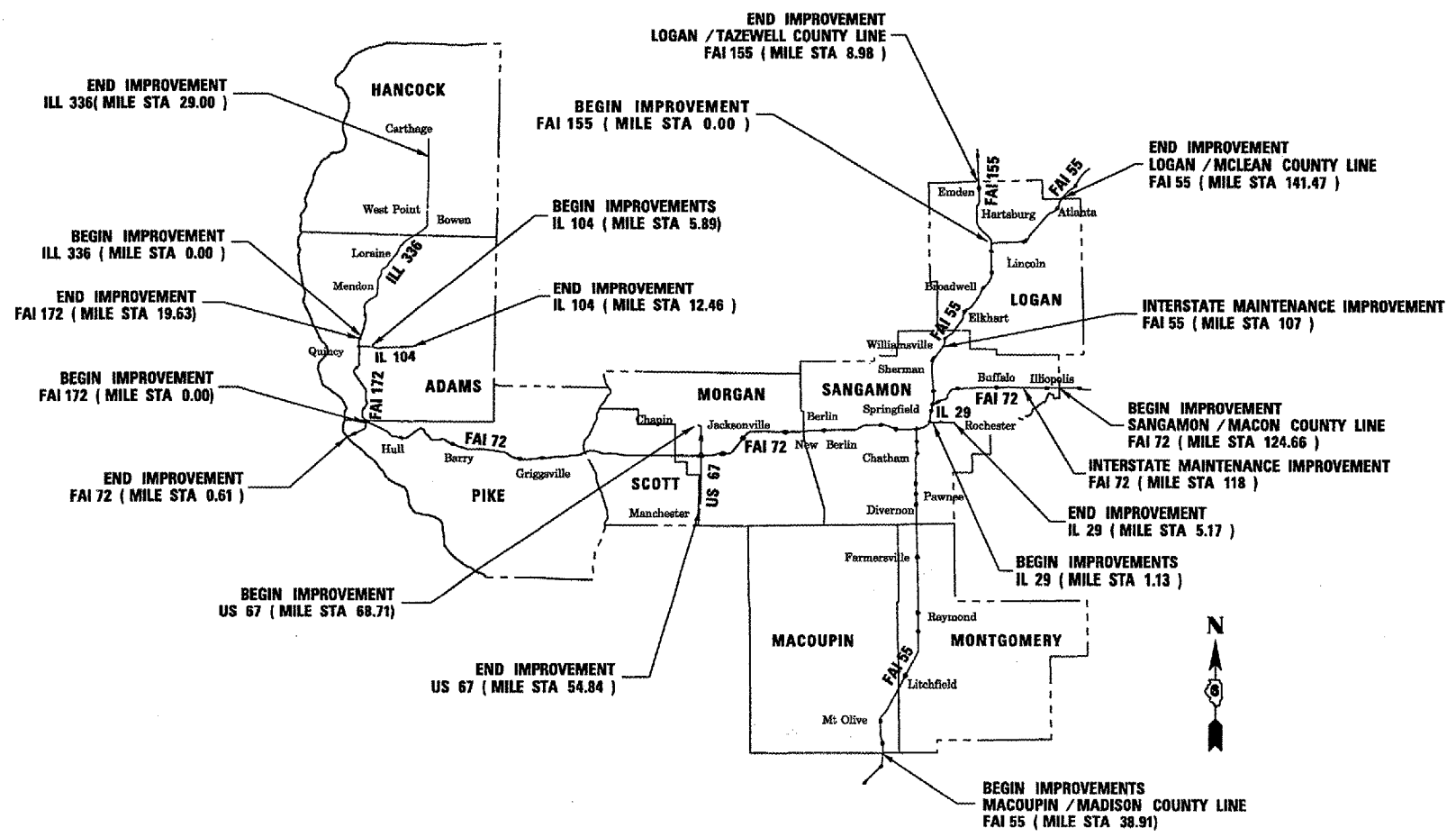
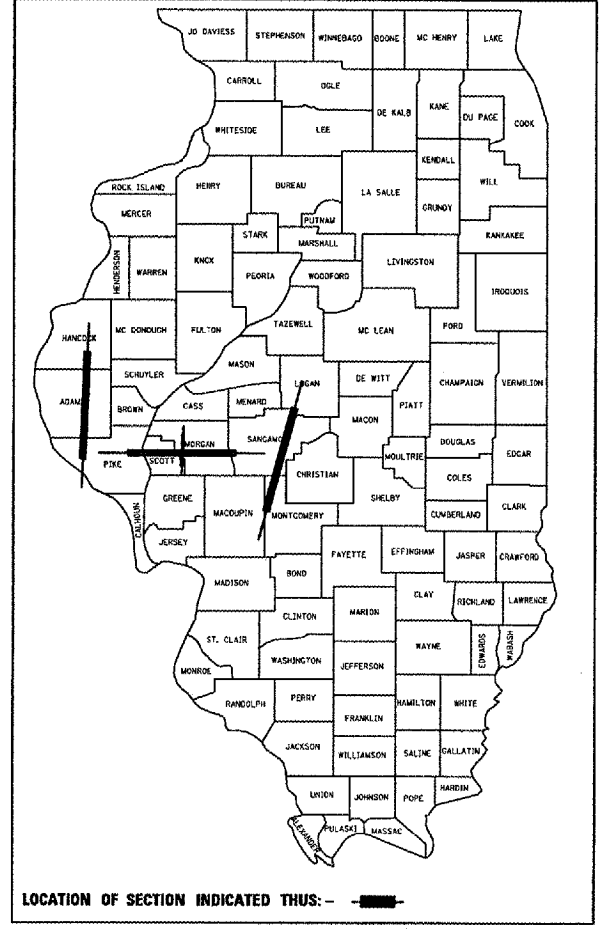
VARIOUS COUNTIES
 C-96-552-07

INDEX OF SHEETS

- 1. COVER SHEET
- 2. GENERAL NOTES
- 3. SUMMARY OF QUANTITIES
- 4-10. SCHEDULES
- 11-12. TYPICAL SECTIONS
- 13-14. PLAN SHEETS
- 15. DETAILS

FOR LIST OF STANDARDS, SEE SHEET NO. 2

D-96-531-07



FULL SIZE PLANS HAVE BEEN PREPARED USING STANDARD ENGINEERING SCALES. REDUCED SIZED PLANS WILL NOT CONFORM TO STANDARD SCALES. IN MAKING MEASUREMENTS ON REDUCED PLANS, THE ABOVE SCALES MAY BE USED.

J.U.L.I.E.
 JOINT UTILITY LOCATION INFORMATION FOR EXCAVATION
 1-800-892-0123

CONTRACT NO. 72B04

PROJECT ENGINEER JOHN NEGANGARD 217-782-6990
 SQUAD LEADER BRIAN GALLOWAY 217-557-7897

STATE OF ILLINOIS
 DEPARTMENT OF TRANSPORTATION
 DIVISION OF HIGHWAYS

SUBMITTED MARCH 23, 2007
Christ H. Reed
 DEPUTY DIRECTOR OF HIGHWAYS, REGION ENGINEER

May 11, 2007
Eric E. Ham
 ENGINEER OF DESIGN AND ENVIRONMENT

May 11, 2007
Milton R. Sees, P.E.
 DIRECTOR OF HIGHWAYS, CHIEF ENGINEER

**PRINTED BY THE AUTHORITY
 OF THE STATE OF ILLINOIS**