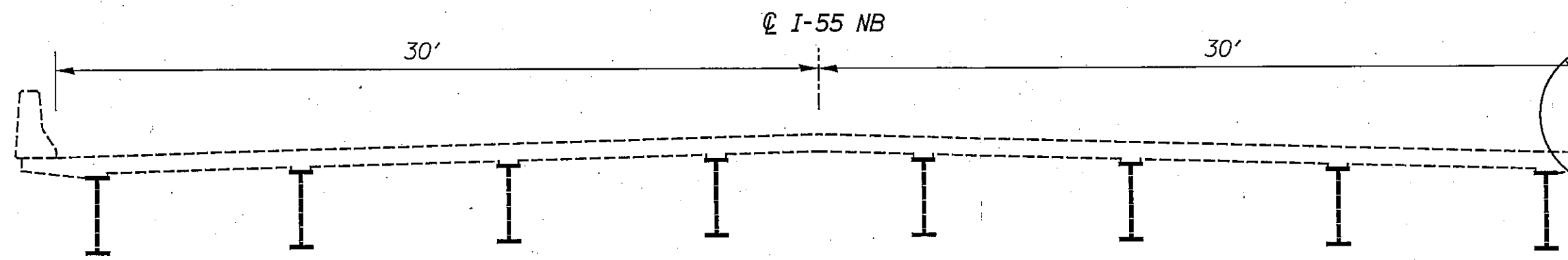
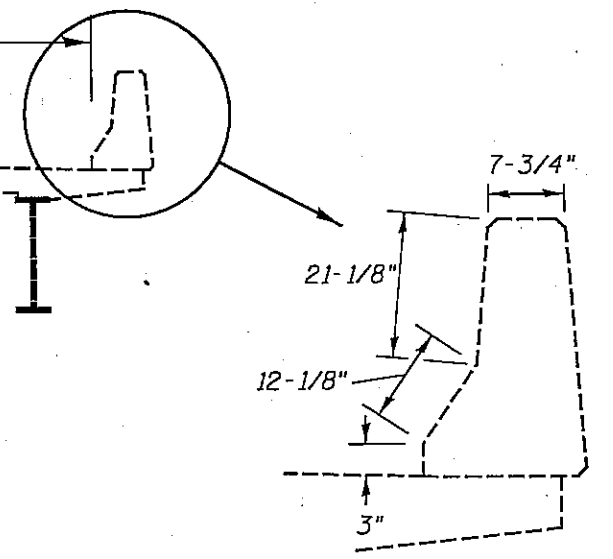


PLAN VIEW



CROSS SECTION



TOTAL WIDTH =  $(30' + 3" + 12\text{-}1/8" + 21\text{-}1/8" + 7\text{-}3/4") \times 2 = 67.3'$   
 TOTAL LENGTH = 717.7'  
 TOTAL AREA =  $717.7' \times 67.3' = 48301 \text{ SQ FT}$   
 $48301 \text{ SQ FT} / 9 = 5367 \text{ SQ YD}$

NOT TO SCALE

SN 084-0500  
 FAI 55 (I-55)  
 SEC. (84-4B-1)I-1; (84-2B-1)I-1  
 SANGAMON COUNTY