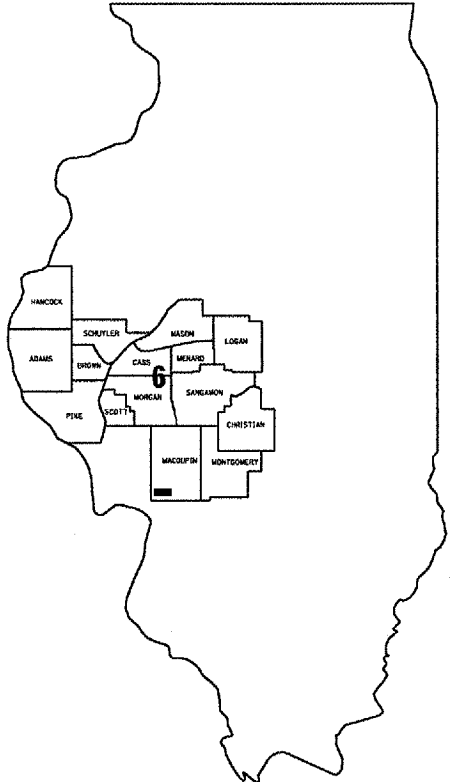


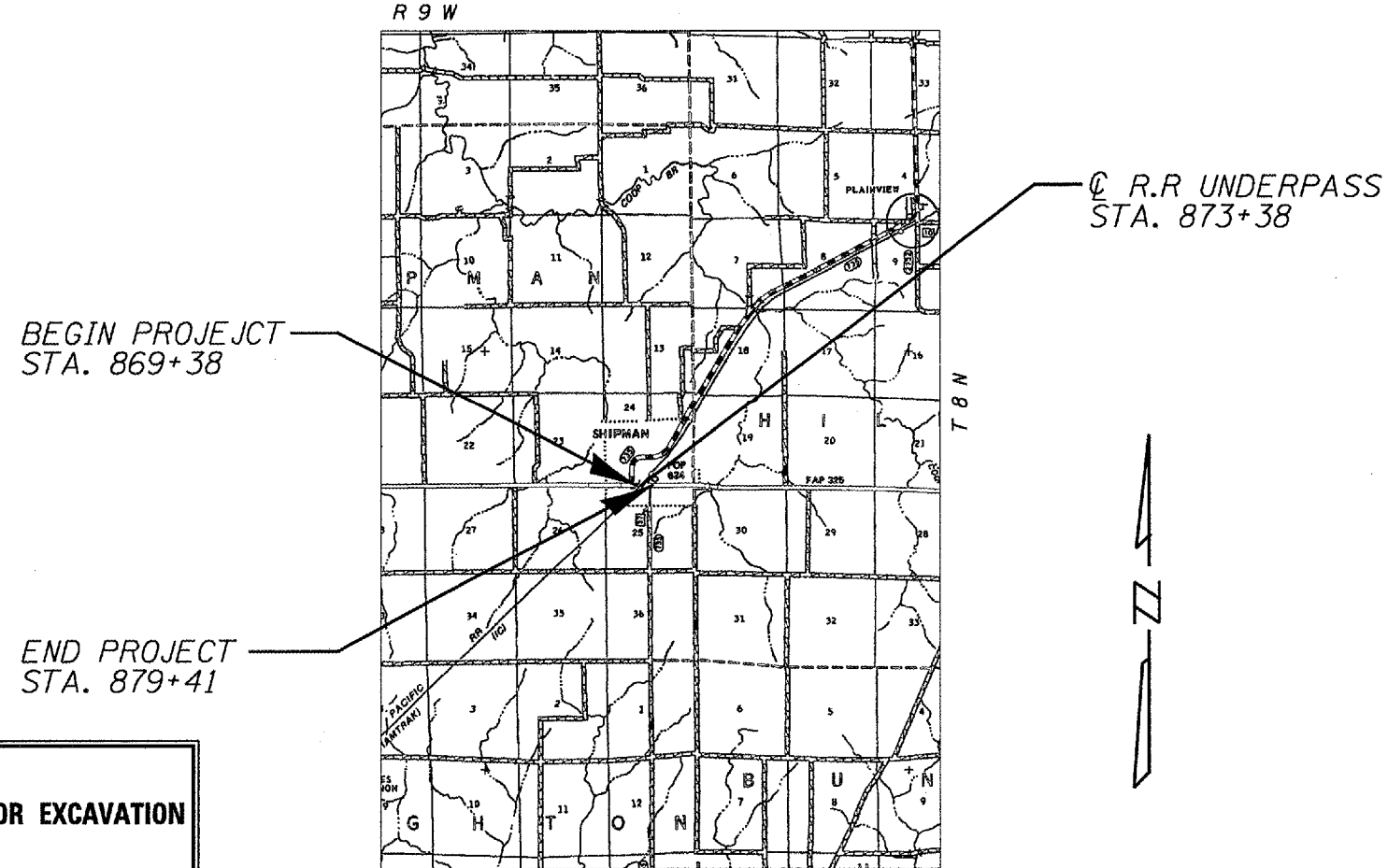
FOR INDEX OF SHEETS AND HIGHWAY
STANDARDS, SEE SHEET 2.

STATE OF ILLINOIS
DEPARTMENT OF TRANSPORTATION
DIVISION OF HIGHWAYS

**PLANS FOR PROPOSED
CONTRACT MAINTENANCE
FAP ROUTE 325 (IL 16)
SECTION (114S,116)RS-5
MACOUPIN COUNTY
C96-006-08 / D96-017-07**



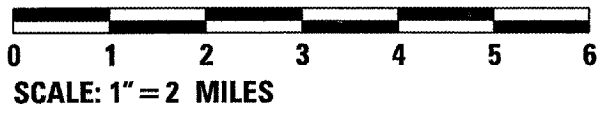
LOCATION OF SECTION INDICATED THUS: ■



J. U. L. I. E.
JOINT UTILITY LOCATION INFORMATION FOR EXCAVATION
1-800-892-0123

PLANS & CONTRACT TECHNICIAN: TIMOTHY SHARP
PHONE: (217) 782-7743

NET LTH OF SEC 1,410.00 FT = 0.267 MILE



STATE OF ILLINOIS
DEPARTMENT OF TRANSPORTATION
DIVISION OF HIGHWAYS

SUBMITTED APRIL 2, 20 07

Christ H. Reed
DEPUTY DIRECTOR OF HIGHWAYS, REGION FOUR ENGINEER

May 11, 20 07

Eric E. Harn
ENGINEER OF DESIGN AND ENVIRONMENT

May 11, 20 07

Milton R. Sees, P.E.
DIRECTOR, DIVISION OF HIGHWAYS

CONTRACT NO. 72B18

INDEX

- 1 COVER
- 2 INDEX/STANDARDS/SIGNATURES
- 3 QUANTITIES
- 4-5 TYPICAL SECTIONS
- 6 SCHEDULES
- 7 BUTT JOINT DETAILS

STANDARDS

- 701001-01
- 701006-02
- 701011-01
- 701311-02
- 701501-03
- 702001-06
- 780001-01

STATE OF ILLINOIS DEPARTMENT OF TRANSPORTATION DIVISION OF HIGHWAYS DISTRICT 6	
EXAMINED <u>March 30</u> 20 <u>07</u>	<u>Ron J. Harris</u> ENGINEER OF OPERATIONS
EXAMINED <u>Mar 20</u> 20 <u>07</u>	<u>[Signature]</u> ENGINEER OF PROGRAM IMPLEMENTATION
EXAMINED <u>Mar 27</u> 20 <u>07</u>	<u>[Signature]</u> ENGINEER OF PROGRAM DEVELOPMENT

NOTES:

NO PASSING ZONES TO BE FIELD VERIFIED BY THE BUREAU OF OPERATIONS.
THE RESIDENT ENGINEER SHALL NOTIFY THE BUREAU OF OPERATIONS 14 DAYS
PRIOR TO PERMANENT PAVEMENT MARKING.

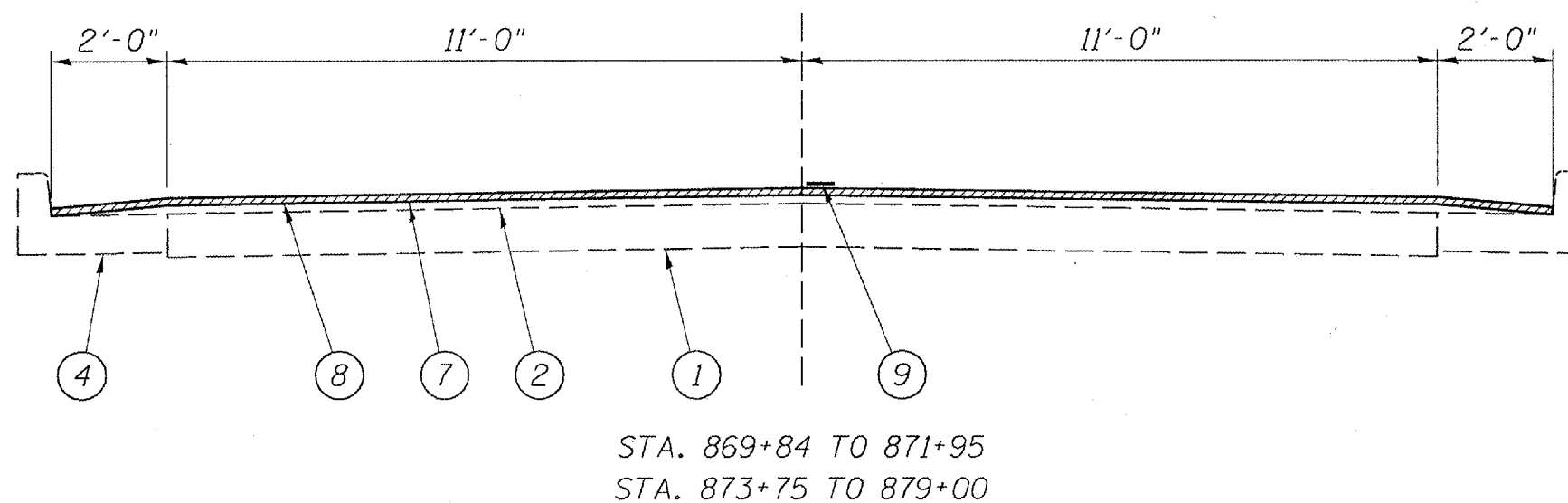
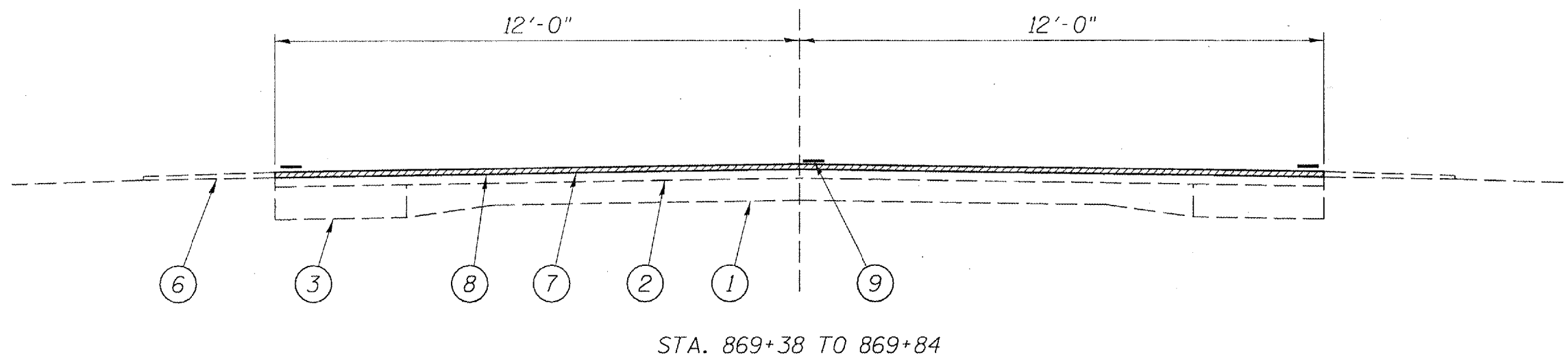
INDEX/STANDARDS/SIGNATURES
FAP 325 (IL 16)
SECTION (114S,116)RS-5
MACOUPIN COUNTY

S U M M A R Y O F Q U A N T I T I E S

CODE NO.	ITEM	UNIT	100% STATE
			1000
			TOTAL QTY
40600200	BITUMINOUS MATERIALS (PRIME COAT)	TON	1.1
40600300	AGGREGATE (PRIME COAT)	TON	5.6
40600990	TEMPORARY RAMP	SQ YD	28
40603310	HOT-MIX ASPHALT SURFACE COURSE, MIX C, N50	TON	236
44000155	HOT-MIX ASPHALT SURFACE REMOVAL, 1 1/2"	SQ YD	2,808
67100100	MOBILIZATION	L SUM	1
70102620	TRAFFIC CONTROL AND PROTECTION, STANDARD 701501	L SUM	1
70300100	SHORT-TERM PAVEMENT MARKING	FOOT	201
70300230	TEMPORARY PAVEMENT MARKING - LINE 5"	FOOT	2,007
70301000	WORK ZONE PAVMENT MARKING REMOVAL	SQ FT	34
* 78001120	PAINT PAVEMENT MARKING - LINE 5"	FOOT	2,007
* 78100100	RAISED REFLECTIVE PAVEMENT MARKER	EACH	14
78300200	RAISED REFLECTIVE PAVEMENT MARKER REMOVAL	EACH	14

* SPECIALTY ITEMS

QUANTITIES
FAP 325 (IL 16)
SECTION (114S,116)RS-5
MACOUPIN COUNTY

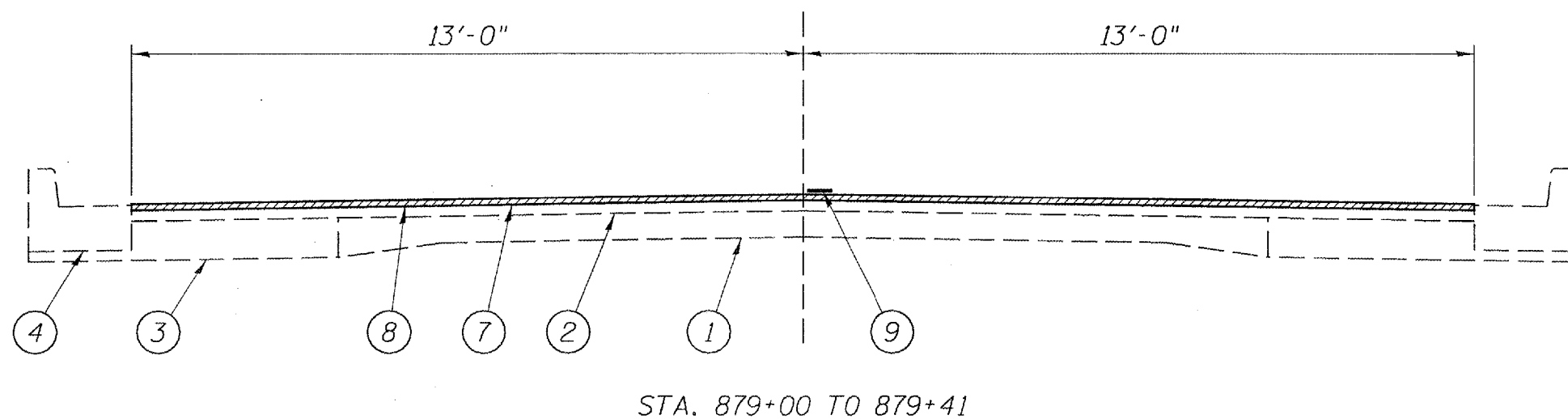
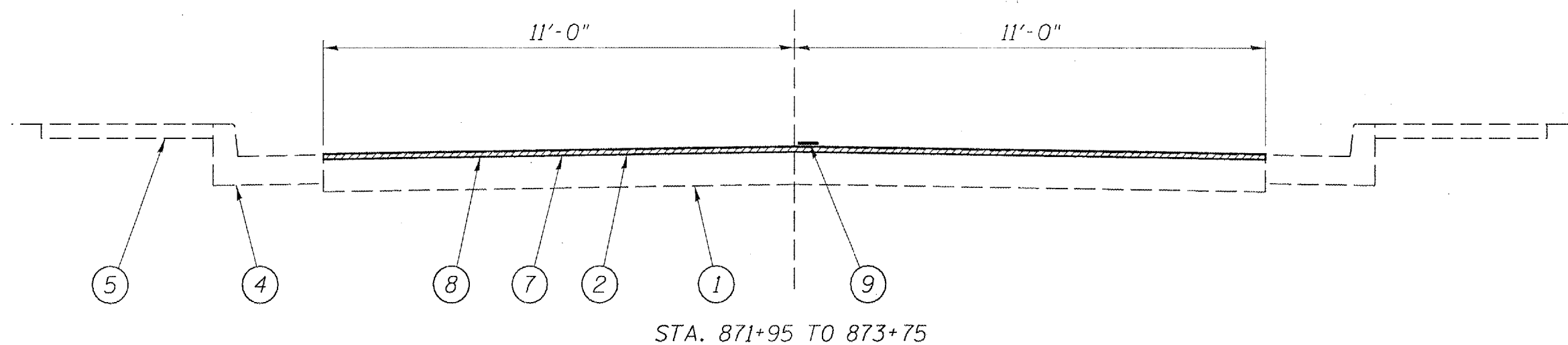


LEGEND

- 1 - EXIST. P.C.C. PAVEMENT
- 2 - EXIST. BITUMINOUS SURFACE VARIABLE DEPTH
- 3 - EXIST. BITUMINOUS CONCRETE BASE COURSE WIDENING
- 4 - EXIST. COMBINATION CURB AND GUTTER
- 5 - EXIST. SIDEWALK
- 6 - EXIST. AGGREGATE SHOULDERS, TYPE B
- 7 - PROP. HOT-MIX ASPHALT SURFACE REMOVAL 1 1/2"
- 8 - PROP. HOT-MIX ASPHALT SURFACE COURSE, MIX C, N50 1 1/2"
- 9 - PROP. PAINT PAVMENT MARKING - LINE 5"

TYPICAL SECTIONS
FAP 325 (IL 96)
SECTION (114S,116)RS-5
MACOUPIN COUNTY

Rev.



Rev.

TYPICAL SECTIONS
FAP 325 (IL 16)
SECTION (114S,116)RS-5
MACOUPIN COUNTY

PAVEMENT MARKING SCHEDULE			
STATION	TYPE	PAINT PVT MK LINE 5"	
		WHITE	YELLOW
LT 869+38 TO 869+83	EDGE LINE	45 FT	
RT 869+38 TO 870+29	EDGE LINE	91 FT	
LT & RT 869+38 TO 877+61	NO PASS		1,646 FT
LT 877+61 TO 879+41	NO PASS		180 FT
RT 877+61 TO 879+41	SKIP DASH		45 FT
TOTALS		136 FT	1,871 FT

NOTES:

STATIONS ARE APPROXIMATE.

MIXTURE REQUIREMENTS	
THE FOLLOWING MIXTURE REQUIREMENTS ARE APPLICABLE FOR THIS PROJECT	
MIXTURE USE(S):	H.M.A S.C., MIX C, N50
AC/PG	PG 64-22
DESIGN AIR VOIDS:	4.0% @ N DESIGN = 50
MIXTURE COMP:	IL 9.5 OR 12.5
FRICITION AGG:	MIX "C"

SCHEDULES
FAP 325 (IL 16)
SECTION (114S,116)RS-5
MACOUPIN COUNTY

