

FAP RTE	SECTION	COUNTY	TOTAL SHEETS	SHEET NO.
328	(6BR-2)B-1	CLAY	61	1

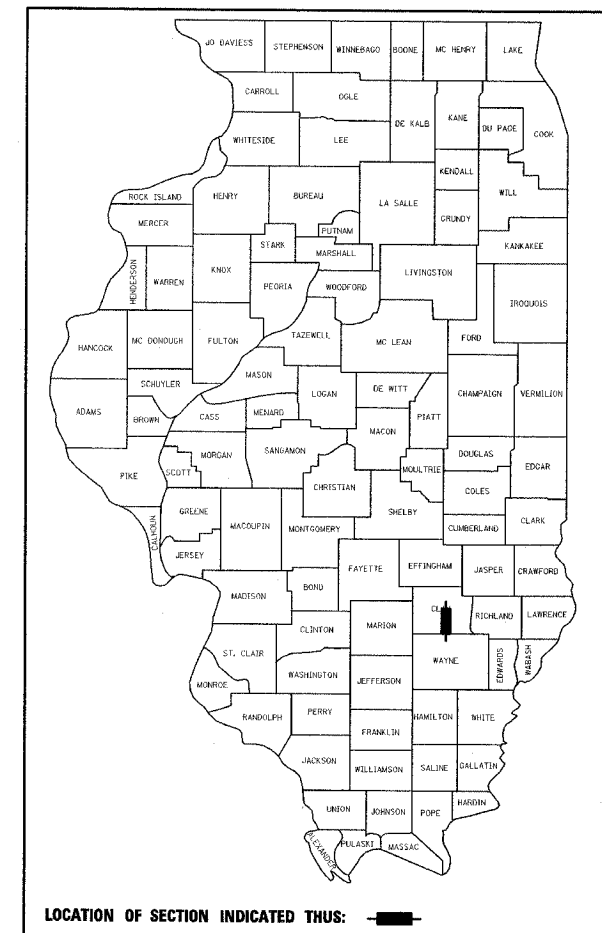
P-94-008-04
D-97-087-06

STATE OF ILLINOIS
DEPARTMENT OF TRANSPORTATION
DIVISION OF HIGHWAYS
**PROPOSED
HIGHWAY PLANS**

FAP ROUTE 328 (US 45)
SECTION (6BR-2)B-1
PROJECT-BRF-0328-(020)
CLAY COUNTY

C-97-140-06

US ROUTE 45 OVER BUCK CREEK
STRUCTURE REPLACEMENT



FUNCTIONAL CLASSIFICATION: OTHER PRINCIPAL ARTERIAL
DESIGN SPEED: 55 mph
POSTED SPEED: 55 mph
ADT: 4497 (2009)
PV: 86.7%
SU: 7.8%
MU: 5.4%

**DESIGN DESIGNATION
N.A.**

STATE OF ILLINOIS
DEPARTMENT OF TRANSPORTATION
DIVISION OF HIGHWAYS

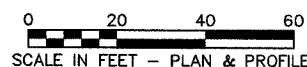
SUBMITTED March 22nd 2007
Christina M. Roads
 DEPUTY DIRECTOR OF HIGHWAYS, REGION ENGINEER

May 11, 2007
Eric E. Harrell
 INTERIM ENGINEER OF DESIGN AND ENVIRONMENT

May 11, 2007
Milton R. Sewell
 DIRECTOR OF HIGHWAYS, CHIEF ENGINEER

INDEX OF SHEETS

SHEET NO.	DESCRIPTION
ROADWAY PLANS	
1.	COVER
2.	GENERAL NOTES AND STANDARDS
3.-4.	SUMMARY OF QUANTITIES
5.	TYPICAL SECTIONS
6.-7.	SCHEDULES OF QUANTITIES
8.-10.	FAP 328 (US 45) PLAN AND PROFILE
11.	PRESTAGE I CONSTRUCTION
12.	STAGE I CONSTRUCTION
13.	STAGE II CONSTRUCTION
14.	STAGE CONSTRUCTION DETAILS
15.	EROSION CONTROL AND DRAINAGE PLAN
16.-17.	MISCELLANEOUS DETAILS
STRUCTURE PLANS	
18.	GENERAL PLAN
19.	GENERAL DATA
20.	STAGE CONSTRUCTION DETAILS
21.	TEMPORARY CONCRETE BARRIER
22.-25.	DECK BEAM REPLACEMENT DETAILS
26.-27.	TOP OF SLAB ELEVATIONS
28.	TOP OF NORTH APPROACH SLAB ELEVATIONS
29.	TOP OF SOUTH APPROACH SLAB ELEVATIONS
30.	SUPERSTRUCTURE
31.	SUPERSTRUCTURE DETAILS
32.	DIAPHRAGM DETAILS
33.	STEEL FRAMING PLAN
34.	STRUCTURAL STEEL DETAILS
35.	BEARING DETAILS
36.	NORTH ABUTMENT
37.	SOUTH ABUTMENT
38.	PIER
39.	BAR SPLICER ASSEMBLY DETAILS
40.	CANTILEVER FORMING BRACKETS
41.	STEEL H-PILE DETAILS
42.-43.	BORING LOGS
EXISTING STRUCTURE PLANS	
44.-56.	EXISTING STRUCTURE PLANS
CROSS SECTIONS	
57.-61.	FAP RTE 328 (US 45) CROSS SECTIONS



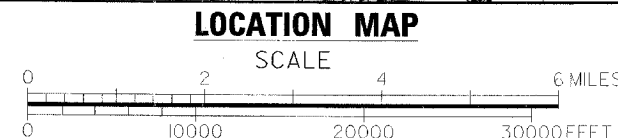
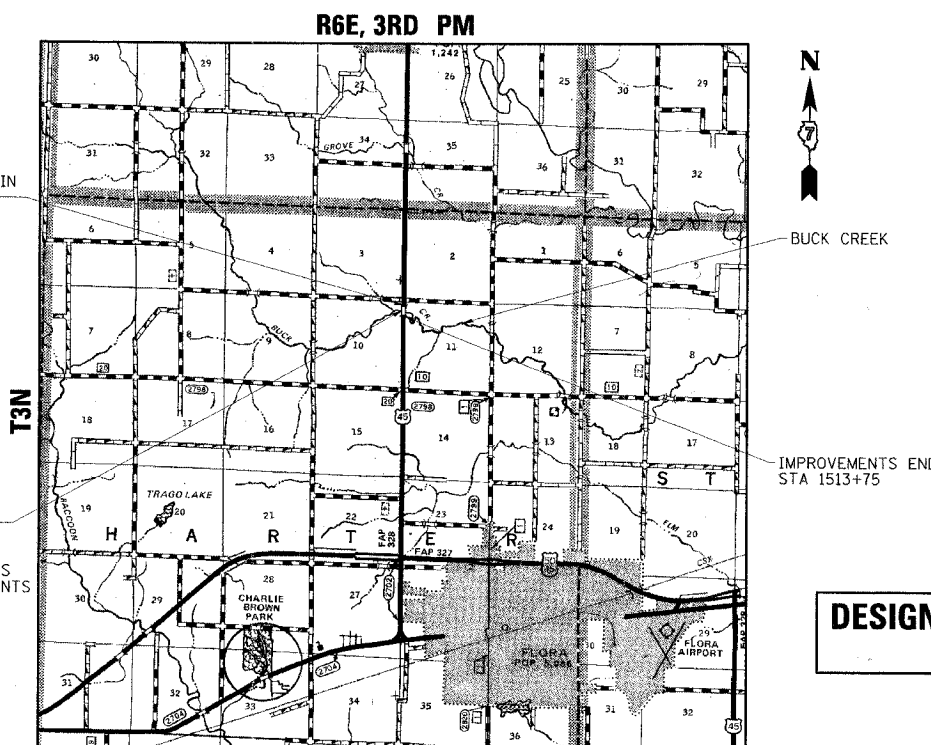
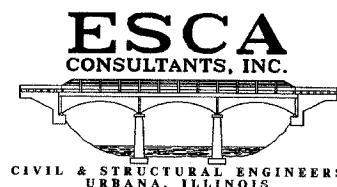
FULL SIZE PLANS HAVE BEEN PREPARED USING STANDARD ENGINEERING SCALES. REDUCED SIZED PLANS WILL NOT CONFORM TO STANDARD SCALES. IN MAKING MEASUREMENTS ON REDUCED PLANS, THE ABOVE SCALES MAY BE USED.

MICROFILMED _____
 REEL NUMBER _____
 AWARDED _____
 RESIDENT ENGINEER _____
 AS BUILT CHANGES WERE MADE ON THE FOLLOWING SHEETS _____

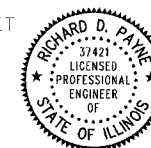
J.U.L.I.E.
 JOINT UTILITY LOCATION INFORMATION FOR EXCAVATION
 1-800-892-0123

DISTRICT 7 NO. (217) 342-3951
 PROJECT ENGINEER: BILL STANLEY

CONTRACT NO.: 74037



GROSS LENGTH = 750 FT. = 0.15 MI.
 NET LENGTH = 750 FT. = 0.15 MI.



Richard D. Payne DATE: 03/20/07
 ILLINOIS PROFESSIONAL LICENSE NO. 37421
 (EXPIRATION DATE: 11-30-08)

**PRINTED BY THE AUTHORITY
OF THE STATE OF ILLINOIS**