

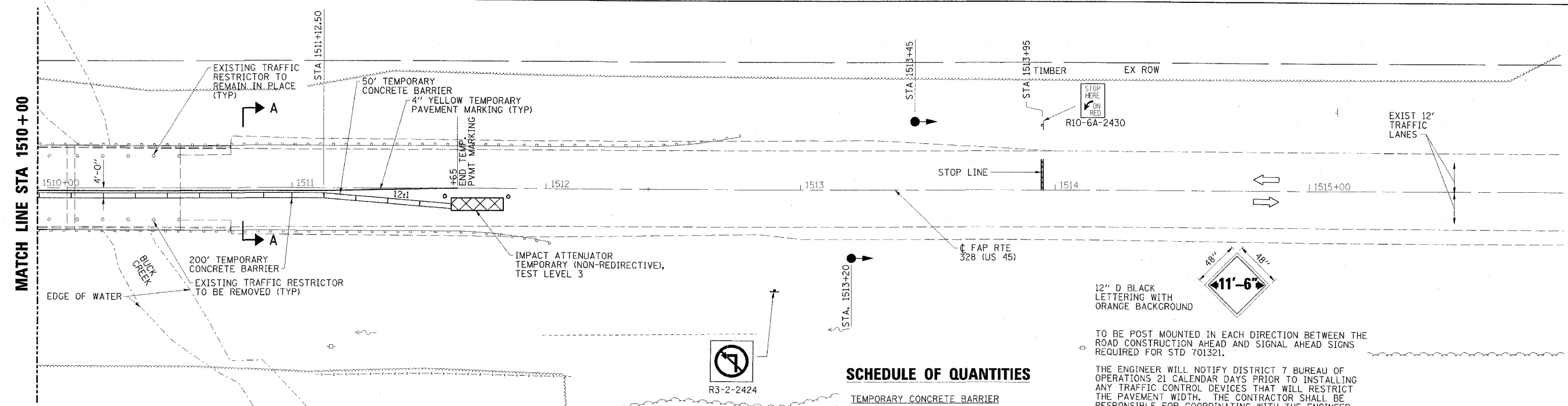
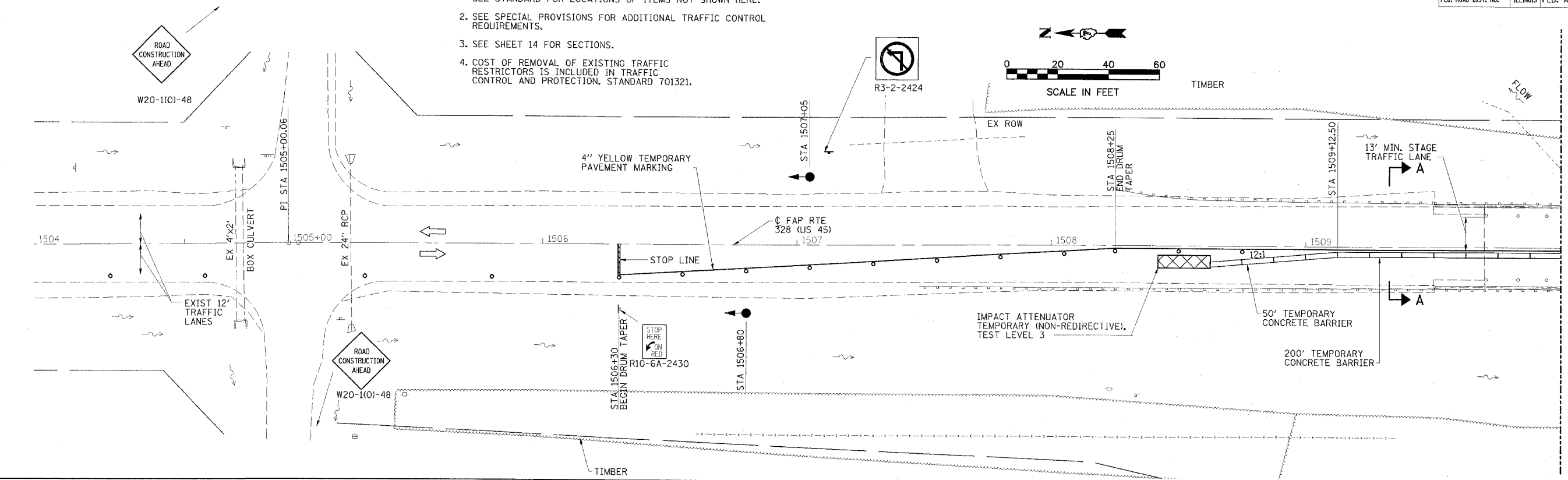
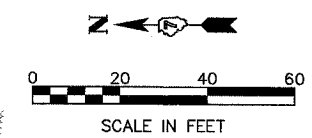


CONTRACT NO. 74037

FAP RTE	SECTION	COUNTY	TOTAL SHEETS	SHEET NO.
328	(6BR-2)B-1	CLAY	61	11
STA. 1504+00		TO STA. 1516+00		
FED. ROAD DIST. NO.		ILLINOIS	FED. AID PROJECT	

GENERAL NOTES

1. TRAFFIC CONTROL SHALL BE ERECTED AS SHOWN AND ACCORDING TO "TRAFFIC CONTROL AND PROTECTION, STANDARD 701321." SEE STANDARD FOR LOCATIONS OF ITEMS NOT SHOWN HERE.
2. SEE SPECIAL PROVISIONS FOR ADDITIONAL TRAFFIC CONTROL REQUIREMENTS.
3. SEE SHEET 14 FOR SECTIONS.
4. COST OF REMOVAL OF EXISTING TRAFFIC RESTRICTORS IS INCLUDED IN TRAFFIC CONTROL AND PROTECTION, STANDARD 701321.



SCHEDULE OF QUANTITIES

ITEM	STATION TO	STATION	TOTAL FEET
TEMPORARY CONCRETE BARRIER	1508+62.50	1511+62.50	300
TEMPORARY BRIDGE TRAFFIC SIGNALS			1 EACH
IMPACT ATTENUATORS, TEMPORARY (NON-REDIRECTIVE), TEST LEVEL 3			2 EACH

12" D BLACK LETTERING WITH ORANGE BACKGROUND

TO BE POST MOUNTED IN EACH DIRECTION BETWEEN THE ROAD CONSTRUCTION AHEAD AND SIGNAL AHEAD SIGNS REQUIRED FOR STD 701321.

THE ENGINEER WILL NOTIFY DISTRICT 7 BUREAU OF OPERATIONS 21 CALENDAR DAYS PRIOR TO INSTALLING ANY TRAFFIC CONTROL DEVICES THAT WILL RESTRICT THE PAVEMENT WIDTH. THE CONTRACTOR SHALL BE RESPONSIBLE FOR COORDINATING WITH THE ENGINEER TO MEET THIS REQUIREMENT.

ALL WORK NECESSARY TO IMPLEMENT AND ERECT THE WIDTH RESTRICTION SIGNS WILL BE INCLUDED IN THE PRICE FOR TRAFFIC CONTROL AND PROTECTION, STANDARD 701321.

WIDTH RESTRICTION SIGN

(PRESTAGE I SIGN SHOWN; USE 10'-0" WIDTH SIGNS FOR STAGE I)

PRESTAGE I CONSTRUCTION
FAP ROUTE 328 (US 45)
SECTION (6BR-2)B-1
CLAY COUNTY

LEGEND

- TRAFFIC SIGNAL WITH SIGNAL TIMBER DIRECTION INDICATED
- DRUM WITH STEADY BURNING LIGHT

ESCA
CONSULTANTS, INC.

DESIGNED BY:	JMS/ELH	02/07
DRAWN BY:	JPC/HAG	02/07
CHECKED BY:	ELH	03/07
APPROVED BY:	RDP	03/07