

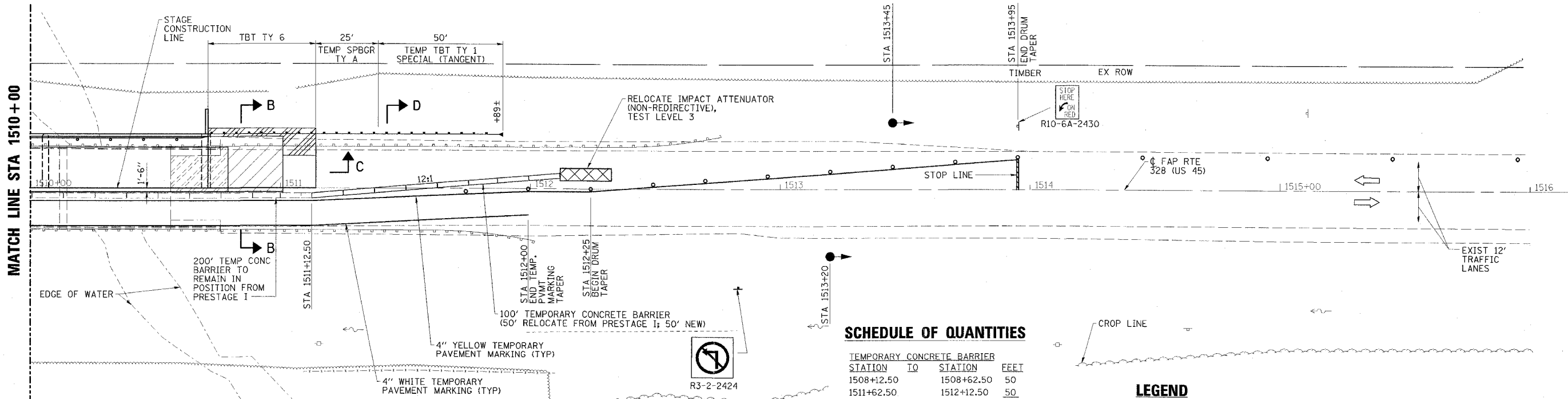
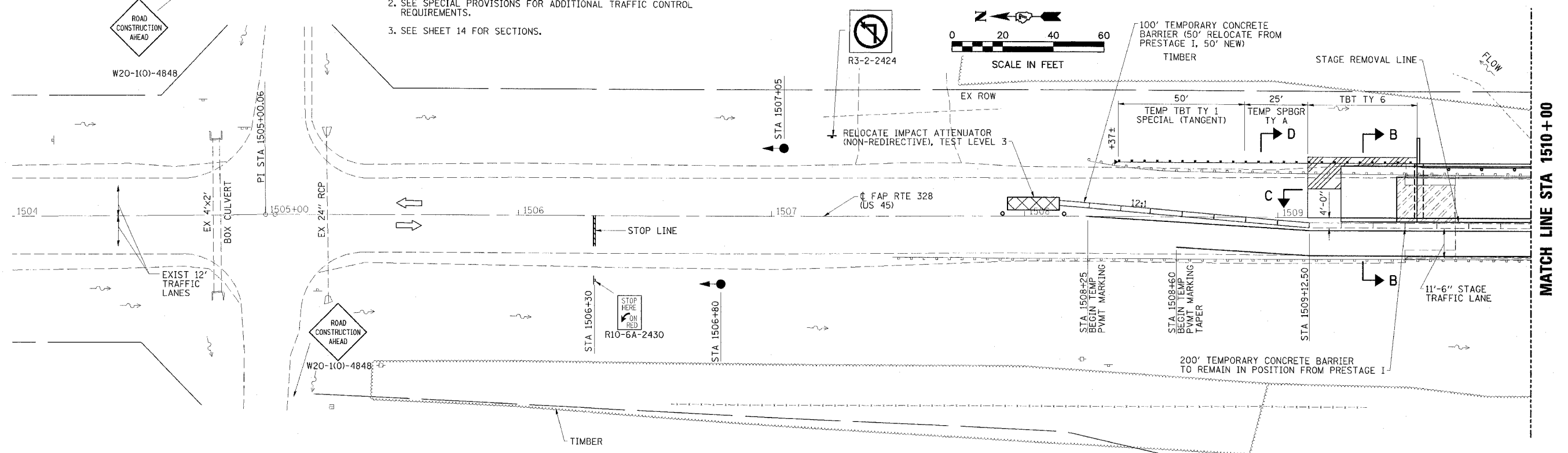


CONTRACT NO. 74037

FAP RTE	SECTION	COUNTY	TOTAL SHEETS	SHEET NO.
328	(GBR-2)B-1	CLAY	61	12
STA. 1504+00		TO STA. 1516+00		
FED. ROAD DIST. NO.		ILLINOIS FED. AID PROJECT		

GENERAL NOTES

1. TRAFFIC CONTROL SHALL BE ERECTED AS SHOWN AND ACCORDING TO "TRAFFIC CONTROL AND PROTECTION, STANDARD 701321." SEE STANDARD FOR LOCATIONS OF ITEMS NOT SHOWN HERE.
2. SEE SPECIAL PROVISIONS FOR ADDITIONAL TRAFFIC CONTROL REQUIREMENTS.
3. SEE SHEET 14 FOR SECTIONS.



SCHEDULE OF QUANTITIES

TEMPORARY CONCRETE BARRIER	STATION TO	STATION	FEET
	1508+12.50	1508+62.50	50
	1511+62.50	1512+12.50	50
		TOTAL	100

IMPACT ATTENUATORS, RELOCATE (NON-REDIRECTIVE), TEST LEVEL 3 - 2 EACH

RELOCATE TEMPORARY CONCRETE BARRIER	STATION TO	STATION	FEET
	1508+62.50	1509+12.50	50
	1511+12.50	1511+62.50	50
		TOTAL	100

LEGEND

- TRAFFIC SIGNAL WITH SIGNAL DIRECTION INDICATED
- ▨ PAVEMENT REMOVAL
- ▩ HMA SHOULDERS
- DRUM WITH STEADY BURNING LIGHT
- ▨ HMA SURFACE REMOVAL

STAGE I CONSTRUCTION
FAP ROUTE 328 (US 45)
SECTION (GBR-2)B-1
CLAY COUNTY

ESCA
 CONSULTANTS, INC.

DESIGNED BY:	JMS/ELH	02/07
DRAWN BY:	JPC	02/07
CHECKED BY:	ELH	03/07
APPROVED BY:	RDP	03/07