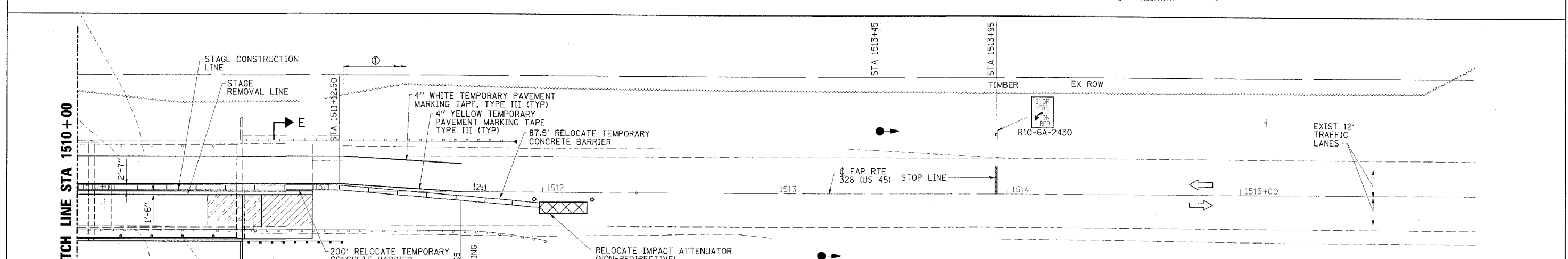
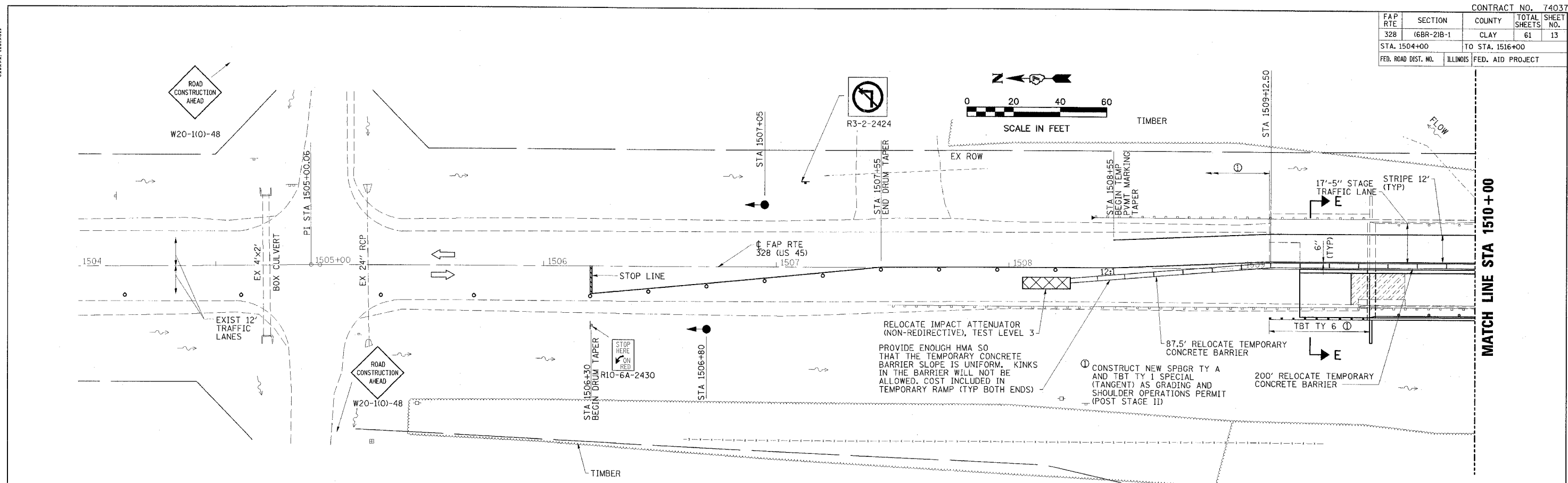




CONTRACT NO. 74037			
FAP RTE	SECTION	COUNTY	TOTAL SHEETS
328	(6BR-2)B-1	CLAY	61
STA. 1504+00		TO STA. 1516+00	
FED. ROAD DIST. NO.	ILLINOIS	FED. AID PROJECT	



ESCA
CONSULTANTS, INC.

DESIGNED BY: JMS/ELH 02/07
 DRAWN BY: JPC/HAG 02/07
 CHECKED BY: ELH 03/07
 APPROVED BY: RDP 03/07

GENERAL NOTES

- TRAFFIC CONTROL SHALL BE ERECTED AS SHOWN AND ACCORDING TO "TRAFFIC CONTROL AND PROTECTION, STANDARD 701321," SEE STANDARD FOR LOCATIONS OF ITEMS NOT SHOWN HERE.
- SEE SPECIAL PROVISIONS FOR ADDITIONAL TRAFFIC CONTROL REQUIREMENTS.
- SEE SHEET 14 FOR SECTIONS.

SCHEDULE OF QUANTITIES

RELOCATE TEMPORARY CONCRETE BARRIER	STATION TO	STATION	TOTAL FEET
	1508+25	1512+00	375

IMPACT ATTENUATORS, RELOCATE (NON-REDIRECTIVE), TEST LEVEL 3 -2 EACH

LEGEND

- TRAFFIC SIGNAL WITH SIGNAL DIRECTION INDICATED
- PAVEMENT REMOVAL
- HMA SHOULDERS
- DRUM WITH STEADY BURNING LIGHT
- HMA SURFACE REMOVAL

STAGE II CONSTRUCTION
FAP ROUTE 328 (US 45)
SECTION (6BR-2)B-1
CLAY COUNTY