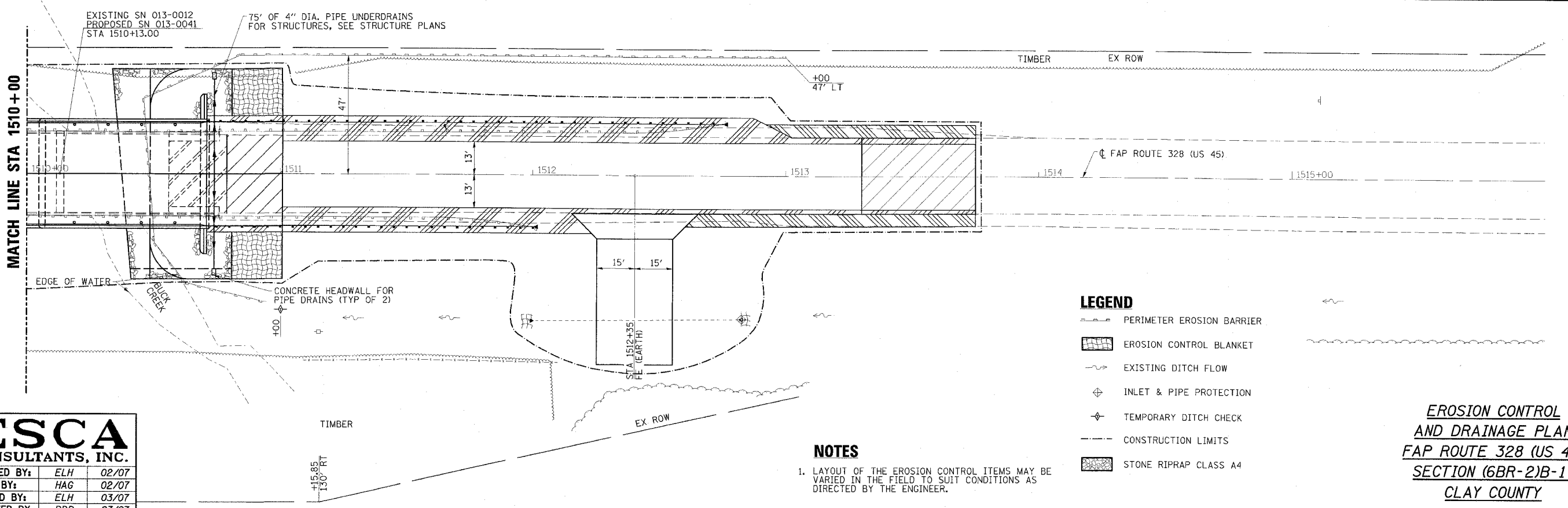
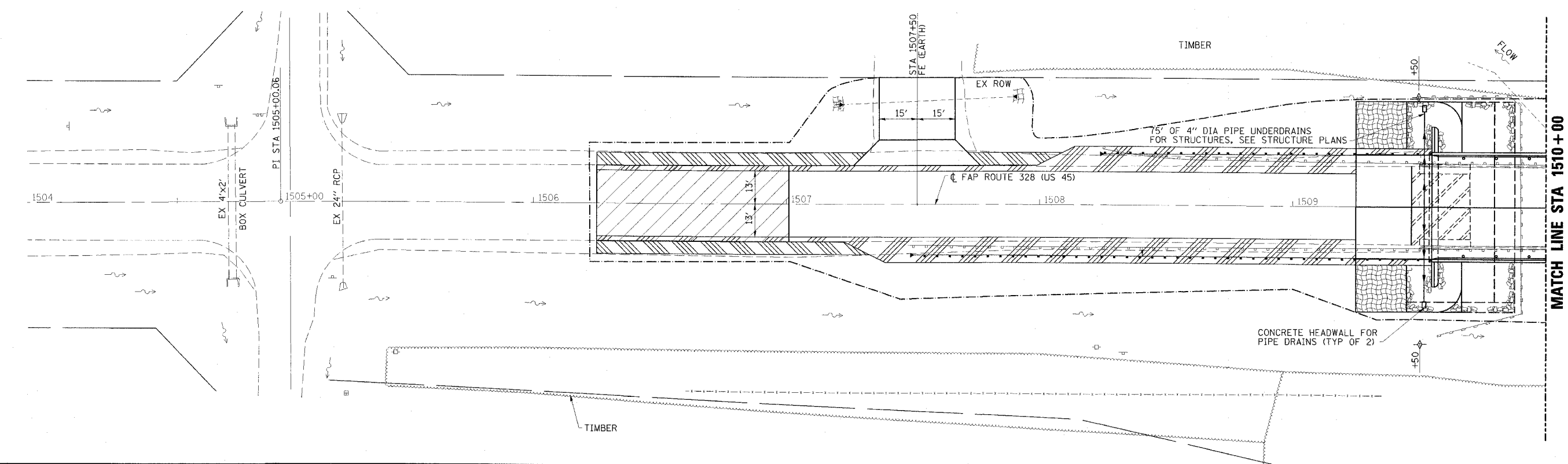
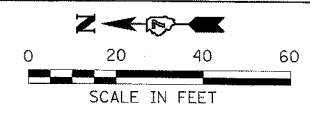




CONTRACT NO. 74037			
FAP RTE	SECTION	COUNTY	TOTAL SHEET NO.
328	(6BR-2)B-1	CLAY	61
STA. 1504+00		TO STA. 1516+00	
FED. ROAD DIST. NO.		ILLINOIS FED. AID PROJECT	



- LEGEND**
- PERIMETER EROSION BARRIER
  - EROSION CONTROL BLANKET
  - EXISTING DITCH FLOW
  - INLET & PIPE PROTECTION
  - TEMPORARY DITCH CHECK
  - CONSTRUCTION LIMITS
  - STONE RIPRAP CLASS A4

**NOTES**

1. LAYOUT OF THE EROSION CONTROL ITEMS MAY BE VARIED IN THE FIELD TO SUIT CONDITIONS AS DIRECTED BY THE ENGINEER.

**EROSION CONTROL  
AND DRAINAGE PLAN  
FAP ROUTE 328 (US 45)  
SECTION (6BR-2)B-1  
CLAY COUNTY**

<b>ESCA</b>		
CONSULTANTS, INC.		
DESIGNED BY:	ELH	02/07
DRAWN BY:	HAG	02/07
CHECKED BY:	ELH	03/07
APPROVED BY:	RDP	03/07