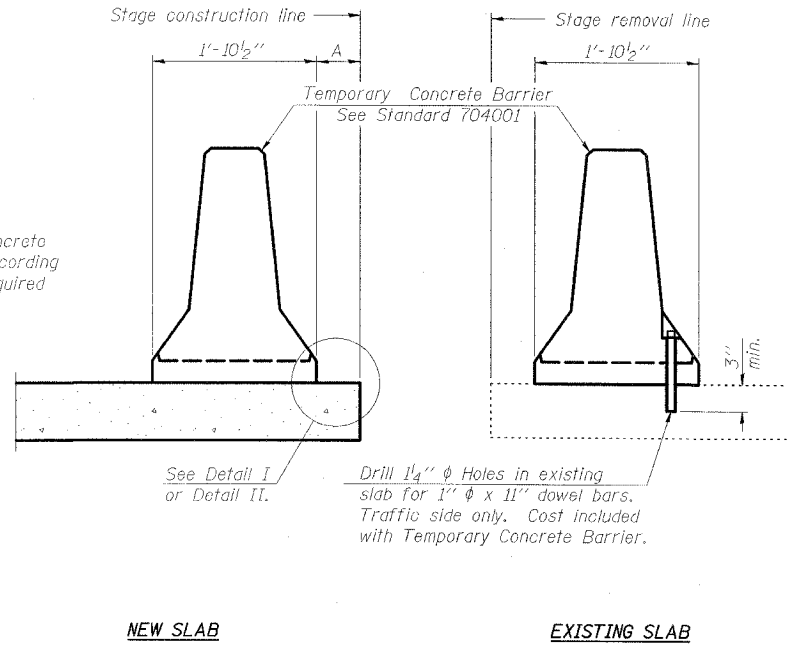


STATE OF ILLINOIS  
DEPARTMENT OF TRANSPORTATION

ROUTE NO.	SECTION	COUNTY	TOTAL SHEETS	SHEET NO.
FAP 328	*	CLAY	61	21
FED. ROAD DIST. NO.	SLABTYPE	REF. AND PROJECT	NO.	
			CONTRACT NO. 74037 *16BR-2)B-1	

SHEET NO. 4  
26 SHEETS

When "A" is 3'-6" or less, the temporary concrete barrier shall be anchored to the new slab according to Detail I or Detail II. No anchorage is required when "A" is greater than 3'-6".

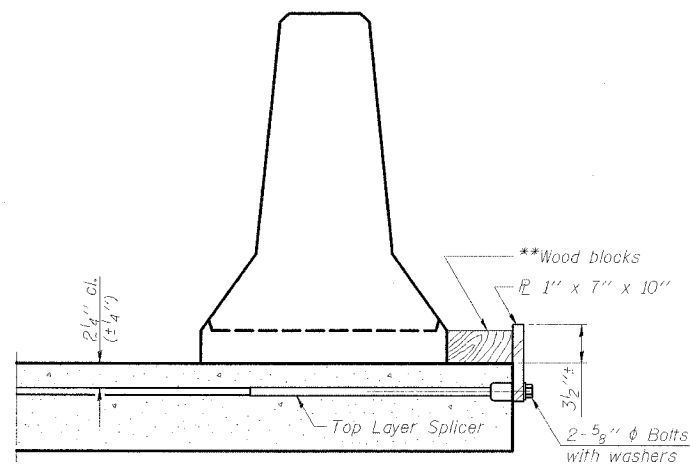


See Detail I or Detail II.  
Drill 1/4"  $\phi$  Holes in existing slab for 1"  $\phi$  x 11" dowel bars. Traffic side only. Cost included with Temporary Concrete Barrier.

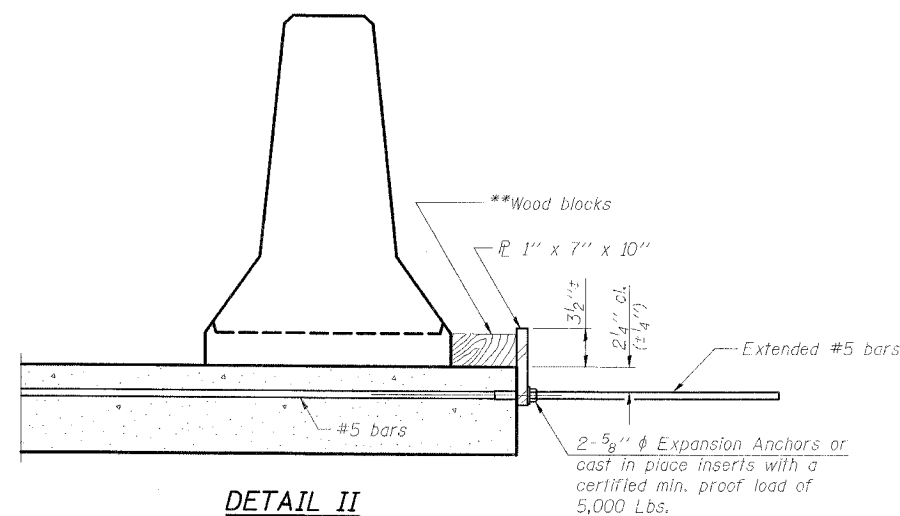
SECTIONS THRU SLAB

NOTES

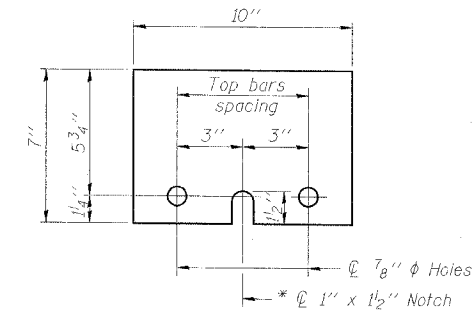
- Detail I - With Bar Splicer or Couplers:  
Connect one (1) 1"x7"x10" steel  $\bar{L}$  to the top layer of couplers with 2-5/8"  $\phi$  bolts screwed to coupler at approximate  $\bar{C}$  of each barrier panel.
- Detail II - With Extended Reinforcement Bars:  
Connect one (1) 1"x7"x10" steel  $\bar{L}$  to the concrete slab with 2-5/8"  $\phi$  Expansion Anchors or cast in place inserts spaced between the top layer of reinforcement at approximate  $\bar{C}$  of each barrier panel.
- Cost of anchorage is included with Temporary Concrete Barrier. The 1" x 7" x 10" plate shall not be removed until stage II construction forms and all reinforcement bars are in place and the concrete is ready to be placed.



DETAIL I



DETAIL II



\*\* Wood blocks may be omitted when required to provide minimum stage traffic lane width. When the wood blocks are omitted, the concrete barrier shall be in direct contact with the steel retainer plate.

**ESCA**  
CONSULTANTS, INC.

DESIGNED BY:	ELH	1/07
DRAWN BY:	CJ	1/07
CHECKED BY:	ELH	1/07
APPROVED BY:	RDP	1/07

**TEMPORARY CONCRETE BARRIER**  
**US ROUTE 45 OVER**  
**BUCK CREEK**  
**FAP RTE 328-SECTION (6BR-2)B-1**  
**CLAY COUNTY**  
**STATION 1510+13.00**  
**STRUCTURE NO. 013-0041**