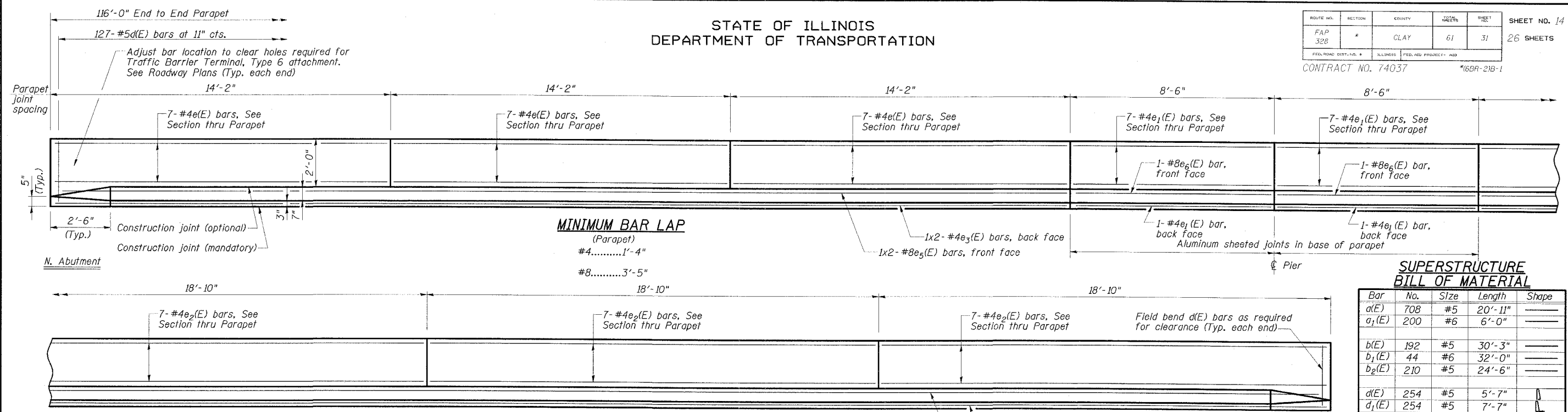


STATE OF ILLINOIS
DEPARTMENT OF TRANSPORTATION

ROUTE NO.	SECTION	COUNTY	DATE	SHEET	SHEET NO. 14 26 SHEETS
FAP 328	*	CLAY	61	31	
CONTRACT NO. 74037					*16BR-21B-1

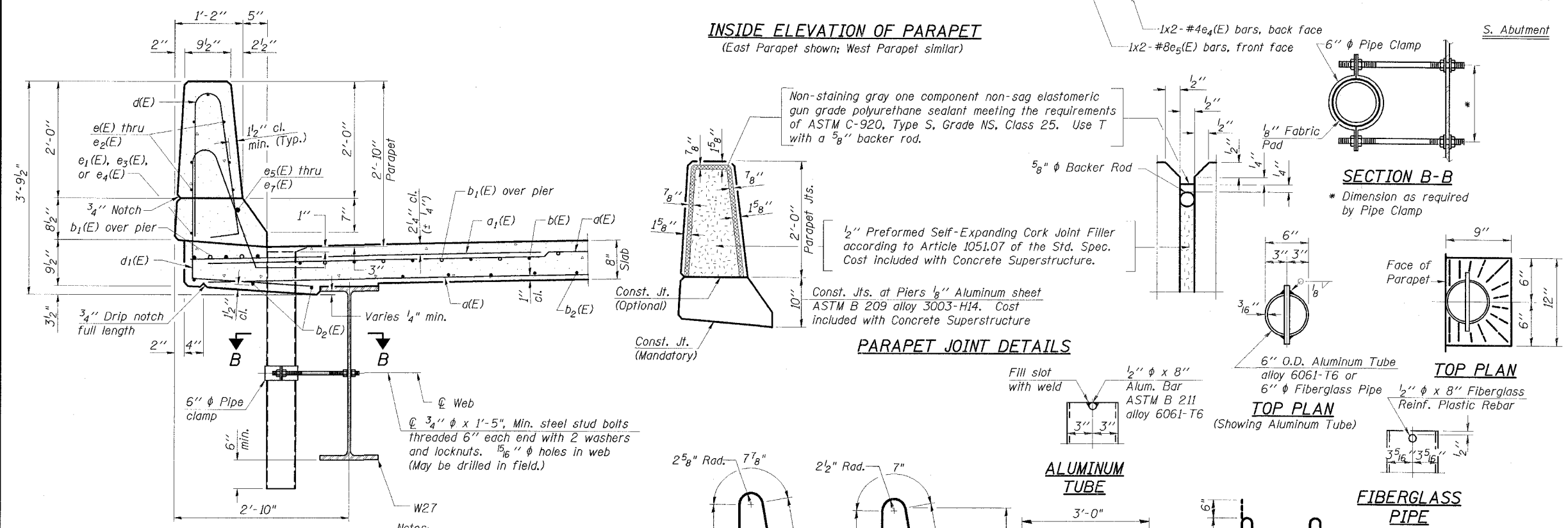


MINIMUM BAR LAP
(Parapet)
#4.....1'-4"
#8.....3'-5"

SUPERSTRUCTURE BILL OF MATERIAL

Bar	No.	Size	Length	Shape
a(E)	708	#5	20'-11"	—
a ₁ (E)	200	#6	6'-0"	—
b(E)	192	#5	30'-3"	—
b ₁ (E)	44	#6	32'-0"	—
b ₂ (E)	210	#5	24'-6"	—
d(E)	254	#5	5'-7"	—
d ₁ (E)	254	#5	7'-7"	—
e(E)	42	#4	13'-10"	—
e ₁ (E)	32	#4	8'-2"	—
e ₂ (E)	42	#4	18'-6"	—
e ₃ (E)	4	#4	21'-9"	—
e ₄ (E)	4	#4	28'-9"	—
e ₅ (E)	4	#8	22'-8"	—
e ₆ (E)	4	#8	8'-2"	—
e ₇ (E)	4	#8	29'-8"	—
m(E)	8	#6	20'-5"	—
m ₁ (E)	12	#6	21'-2"	—
m ₂ (E)	24	#6	9'-0"	—
m ₃ (E)	8	#6	7'-2"	—
m ₄ (E)	4	#6	3'-8"	—
m ₅ (E)	4	#6	2'-5"	—
s(E)	92	#5	5'-6"	—
s ₁ (E)	84	#4	8'-2"	—
v(E)	84	#5	3'-0"	—
Reinforcement Bars, Epoxy Coated		Pound	38480	
Concrete Superstructure		Cu. Yds.	181.0	
Bar Splicers		Each	454	

INSIDE ELEVATION OF PARAPET
(East Parapet shown; West Parapet similar)



PARAPET JOINT DETAILS

Non-staining gray one component non-sag elastomeric gun grade polyurethane sealant meeting the requirements of ASTM C-920, Type S, Grade NS, Class 25. Use T with a 5/8" backer rod.

1/2" Preformed Self-Expanding Cork Joint Filler according to Article 1051.07 of the Std. Spec. Cost included with Concrete Superstructure.

Const. Jts. at Piers 1/8" Aluminum sheet ASTM B 209 alloy 3003-H14. Cost included with Concrete Superstructure

SECTION B-B

* Dimension as required by Pipe Clamp

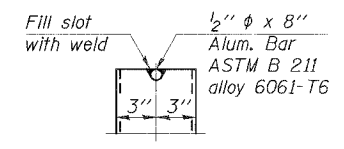
TOP PLAN

6" G.D. Aluminum Tube alloy 6061-T6 or 6" Fiberglass Pipe

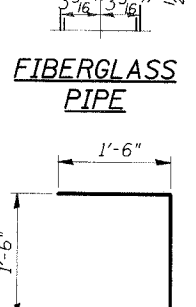
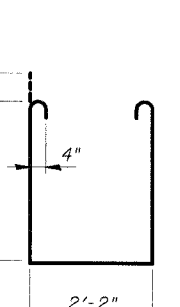
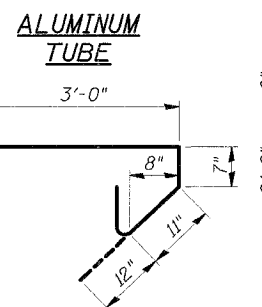
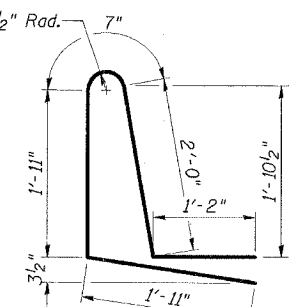
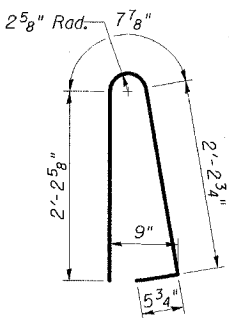
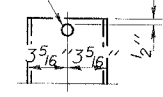
TOP PLAN

1/2" x 8" Fiberglass Reinf. Plastic Rebar

ALUMINUM TUBE



FIBERGLASS PIPE



Notes:
Fiberglass pipe shall conform to ASTM D 2996, with short-time rupture strength hoop tensile stress of 30,000 p.s.i. minimum.
Floor drains need not be painted.

ESCA
CONSULTANTS, INC.

DESIGNED BY:	ELH	02/07
DRAWN BY:	CJ	02/07
CHECKED BY:	ELH	02/07
APPROVED BY:	RDP	02/07

SUPERSTRUCTURE DETAILS
US ROUTE 45 OVER
BUCK CREEK
FAP RTE 328-SECTION (6BR-2)B-1
CLAY COUNTY
STATION 1510+13.00
STRUCTURE NO. 013-0041