

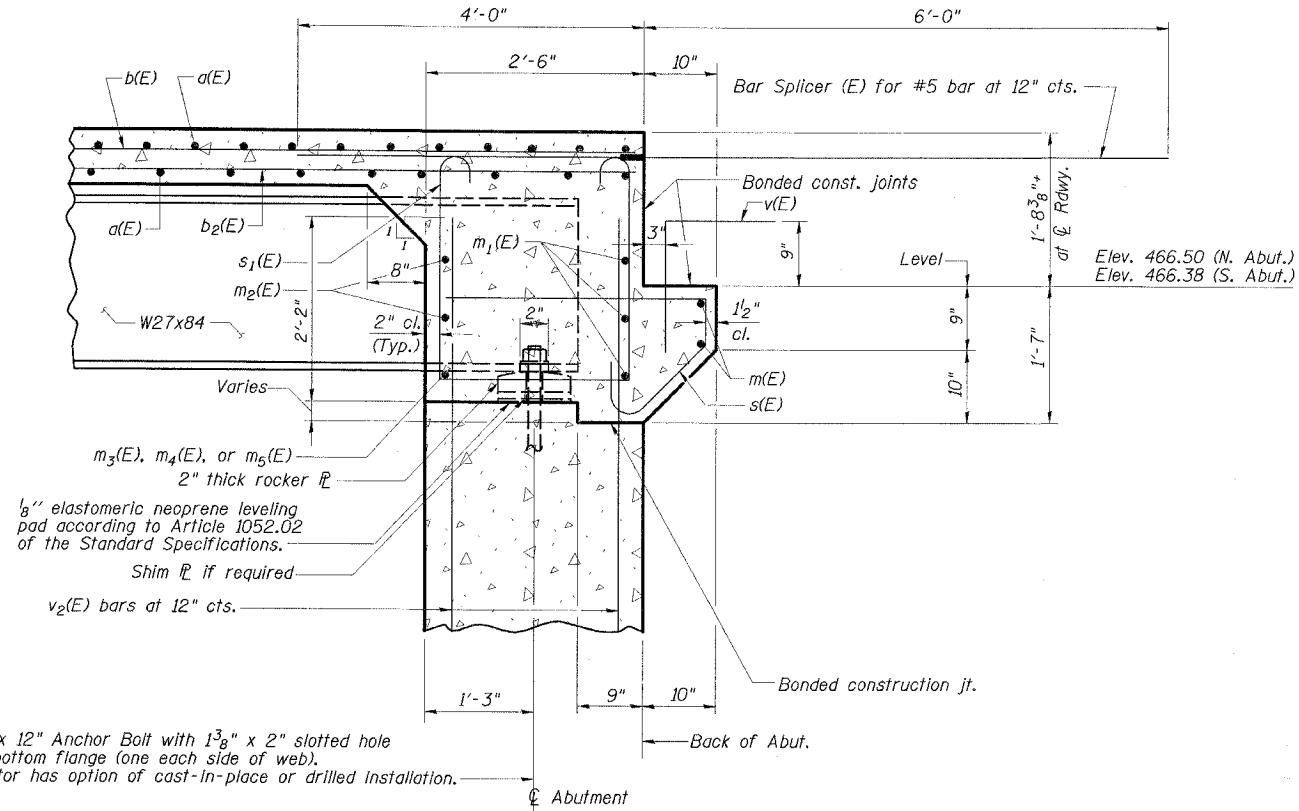
STATE OF ILLINOIS  
DEPARTMENT OF TRANSPORTATION

ROUTE NO.	SECTION	COUNTY	STATION	SHEET	SHEET NO. 15 26 SHEETS
FAP 328	*	CLAY	61	32	
FED. ROAD DIST. NO. *		ILLINOIS	FED. AID PROJECT - AID		

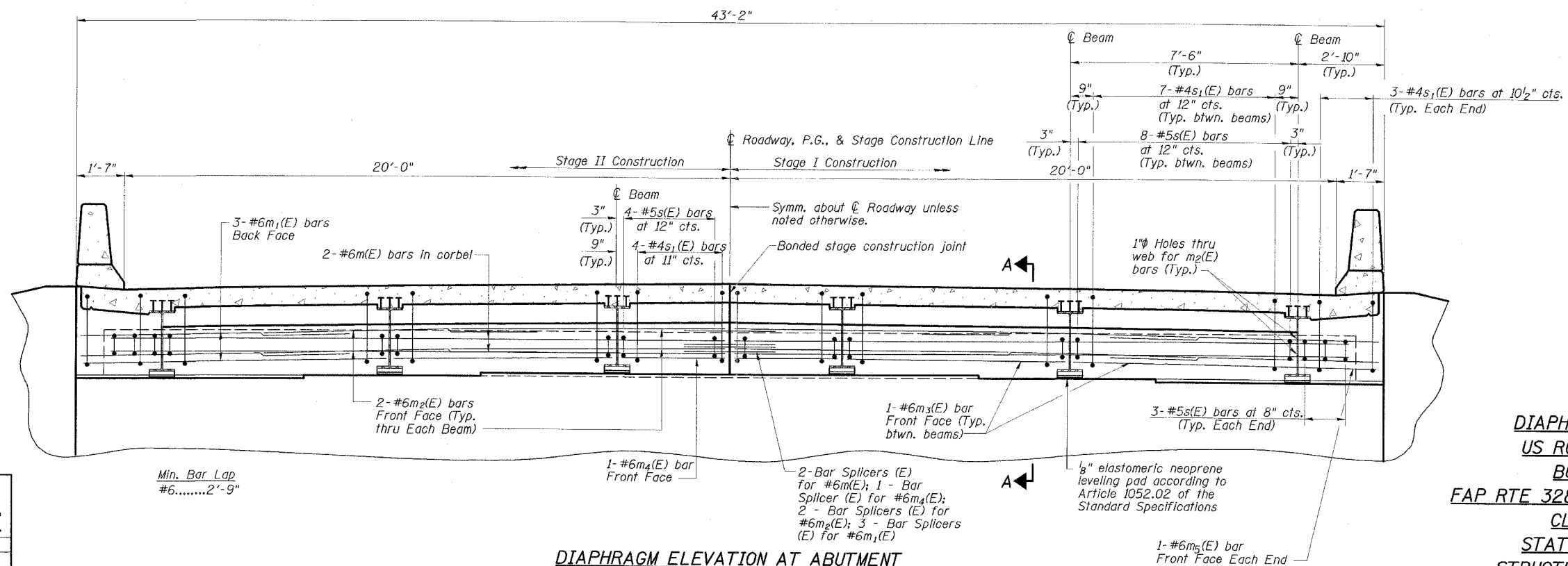
CONTRACT NO. 74037

**NOTES**

1. Reinforcement bars in diaphragm are billed with superstructure on Dwg. No. 14 of 26.
2. Concrete in diaphragm is included with Concrete Superstructure on Dwg. No. 14 of 26.
3. For details of bars s(E) & s<sub>1</sub>(E) see Dwg. No. 14 of 26.
4. For Bar Splicer details see Dwg. No. 22 of 26.
5. The s(E) and s<sub>1</sub>(E) bars shall be placed parallel to the beams. Spacing for these bars shall be at right angles to the beams.



**SECTION A-A**



**DIAPHRAGM ELEVATION AT ABUTMENT**  
(North Abutment shown; South Abutment similar)

**DIAPHRAGM DETAILS**  
**US ROUTE 45 OVER**  
**BUCK CREEK**  
**FAP RTE 328-SECTION (6BR-2)B-1**  
**CLAY COUNTY**  
**STATION 1510+13.00**  
**STRUCTURE NO. 013-0041**

**ESCA**  
CONSULTANTS, INC.

DESIGNED BY:	ELH	02/07
DRAWN BY:	CJ	02/07
CHECKED BY:	ELH	02/07
APPROVED BY:	RDP	02/07

Min. Bar Lap  
#6.....2'-9"