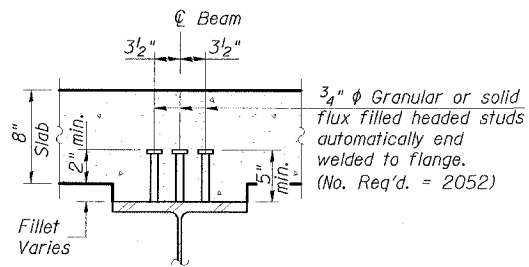
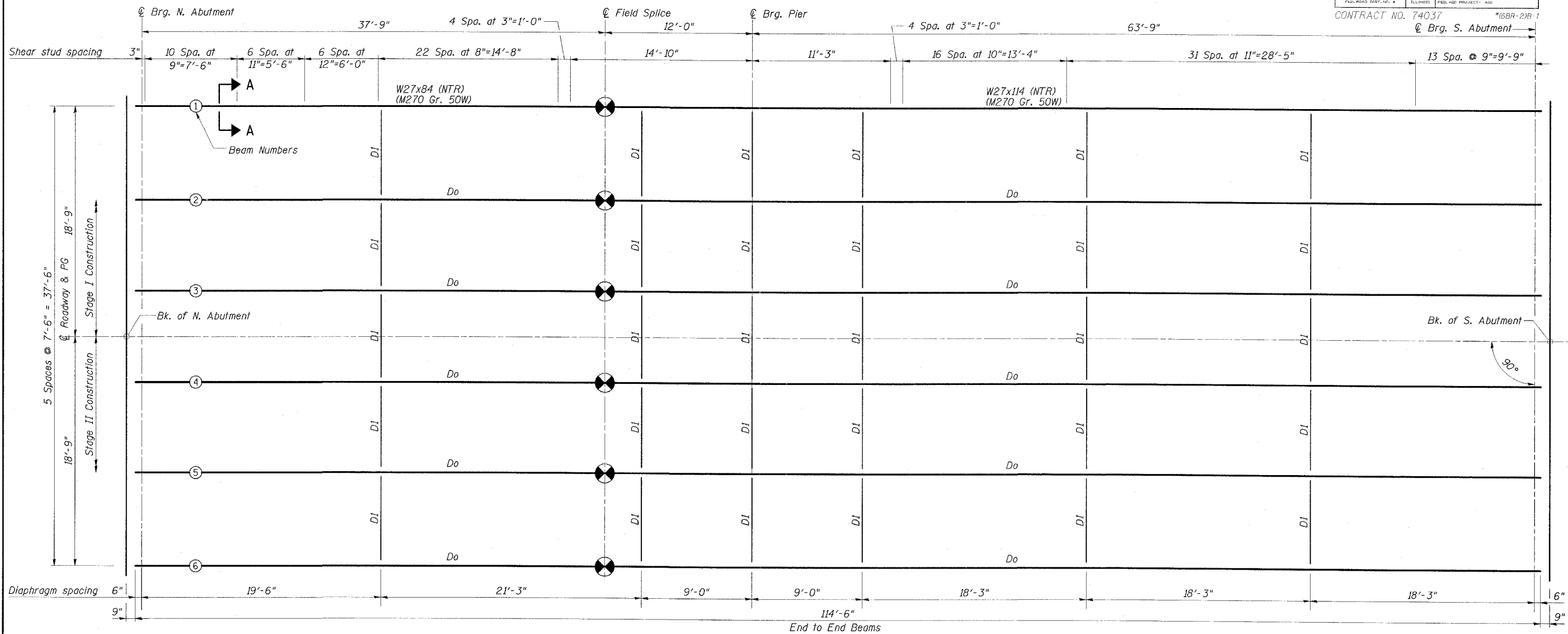
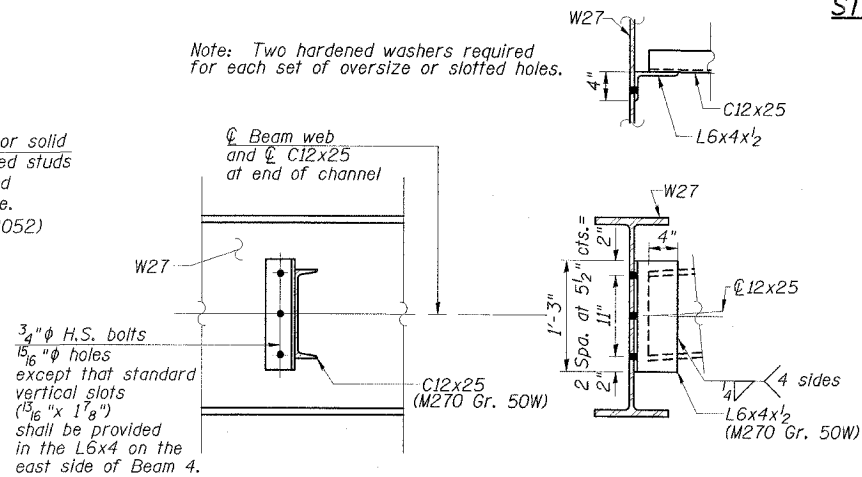


STATE OF ILLINOIS
DEPARTMENT OF TRANSPORTATION

ROUTE NO.	SECTION	COUNTY	TOTAL SHEETS	SHEET NO.
FAP 328	*	CLAY	61	33
CONTRACT NO. 74037 *16BR-2B-1				



Note: Two hardened washers required for each set of oversize or slotted holes.



STEEL FRAMING PLAN

NOTES

- All structural steel shall be AASHTO M 270 Grade 50W including structural steel bearing plates and fill plates for splices.
- See Dwg. No. 17 of 26 for Splice details.
- Load carrying components designated (NTR) shall conform to the Supplemental Requirements for Notch Toughness, Zone 2.
- All diaphragms shall be installed as steel is erected and secured with erection pins and bolts except as otherwise noted. Individual diaphragms at supports may be temporarily disconnected to install bearing anchor rods.
- To accommodate the differential beam deflection between Stages I and II Construction, long vertical slotted holes are to be provided in the diaphragm connection angles located on the east side of Beam 4. Position slots so that bolts start at the top of the slot prior to the Stage II Construction deck concrete pour. Bolts in slots shall be finger tight until the Stage II pour is complete.

TOP OF BEAM ELEVATIONS

(For Fabrication Only)

BEAM	N. ABUT.	SPLICE @ W27x84	SPLICE @ W27x114	PIER	S. ABUT.
1	467.17	467.12	467.15	467.13	467.05
2	467.32	467.27	467.30	467.28	467.20
3	467.43	467.39	467.42	467.40	467.32
4	467.43	467.39	467.42	467.40	467.32
5	467.32	467.27	467.30	467.28	467.20
6	467.17	467.12	467.15	467.13	467.05

Note: Elevations shown are top of flange (not splice plate) at splice locations.

STEEL FRAMING PLAN

US ROUTE 45 OVER

BUCK CREEK

FAP RTE 328-SECTION (6BR-2)B-1

CLAY COUNTY

STATION 1510+13.00

STRUCTURE NO. 013-0041

ESCA
CONSULTANTS, INC.

DESIGNED BY:	ELH	2/07
DRAWN BY:	KAH	2/07
CHECKED BY:	ELH	3/07
APPROVED BY:	RDP	3/07

DIAPHRAGM D1

30 Required