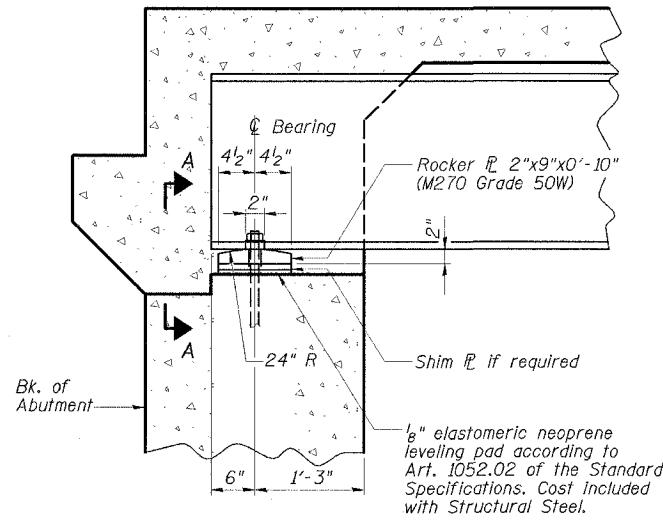
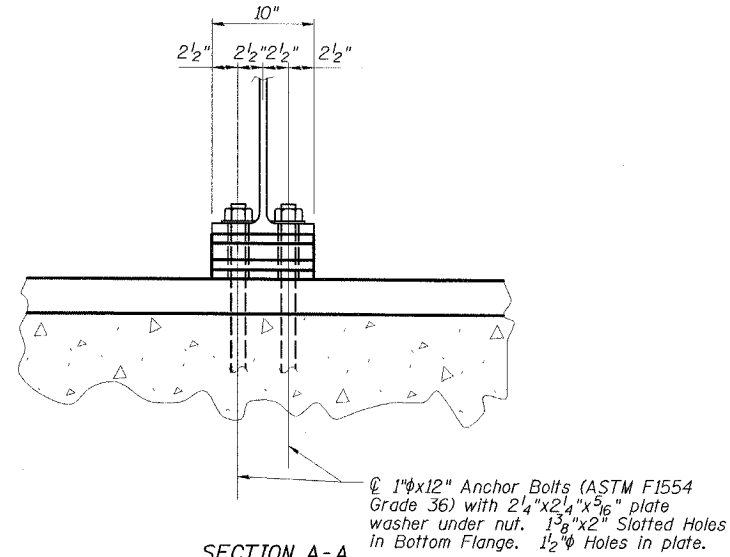


STATE OF ILLINOIS
DEPARTMENT OF TRANSPORTATION

ROUTE NO.	SECTION	COUNTY	SHEET NO.	SHEET	SHEET NO. 18 26 SHEETS
FAP 328	#	CLAY	61	35	
FED. ROAD DIST. NO. *		ILLINOIS	FED. AID PROJECT - AAD		
		CONTRACT NO. 74037		*6BR-2/B-1	



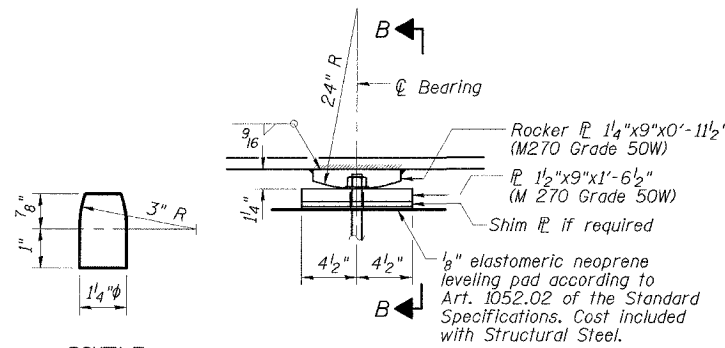
ELEVATION AT ABUTMENTS



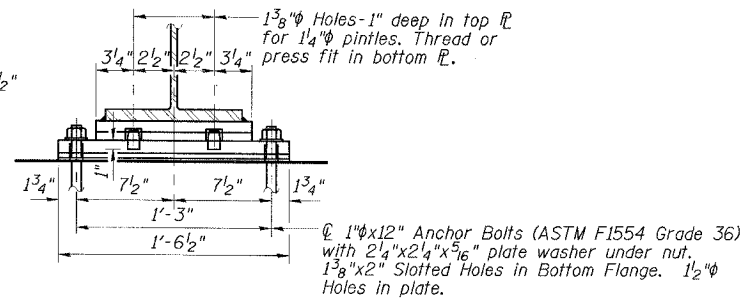
SECTION A-A

FIXED BEARING AT ABUTMENTS
(12 Required)

- NOTES**
- Anchor bolts at fixed bearings may be either cast-in-place or installed in holes drilled after the supported member is in place.
 - Anchors shall be set and grout cured for a minimum of 24 hours prior to forming the bridge deck.
 - Anchor bolts shall be ASTM F1554 all-thread (or an Engineer-approved alternate material) of the grade(s) and diameter(s) specified. ASTM A307 Grade C anchor bolts may be used in lieu of ASTM F1554 Grade 36 (Fy=36ksi). The corresponding specified grade of AASHTO M314 anchor bolts may be used in lieu of ASTM F1554.
 - Drilled and set anchor bolts shall be installed according to Article 521.06 of the Standard Specifications.
 - Two 1/8" adjusting shims shall be provided for each bearing in addition to all other plates or shims and placed as shown on bearing details.

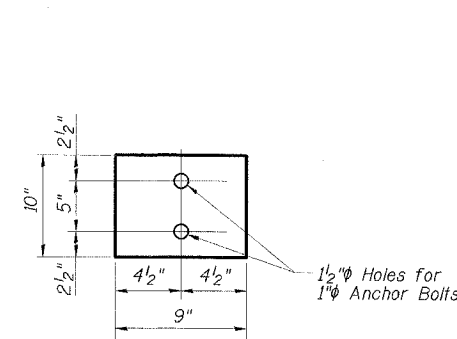


ELEVATION AT PIER

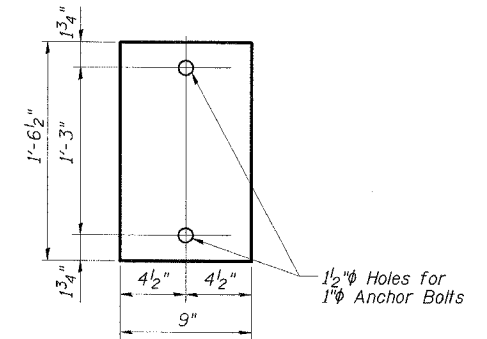


SECTION B-B

FIXED BEARING AT PIER
(6 Required)



PLAN AT ABUTMENTS



PLAN AT PIER

1/8" ELASTOMERIC NEOPRENE LEVELING PAD DETAIL

BILL OF MATERIAL

Item	Unit	Total
Anchor Bolts 1" ϕ	Each	36

ESCA
CONSULTANTS, INC.

DESIGNED BY:	ELH	01/07
DRAWN BY:	CJ	01/07
CHECKED BY:	ELH	01/07
APPROVED BY:	RDP	01/07

BEARING DETAILS
US ROUTE 45 OVER
BUCK CREEK
FAP RTE 328-SECTION (6BR-2)B-1
CLAY COUNTY
STATION 1510+13.00
STRUCTURE NO. 013-0041