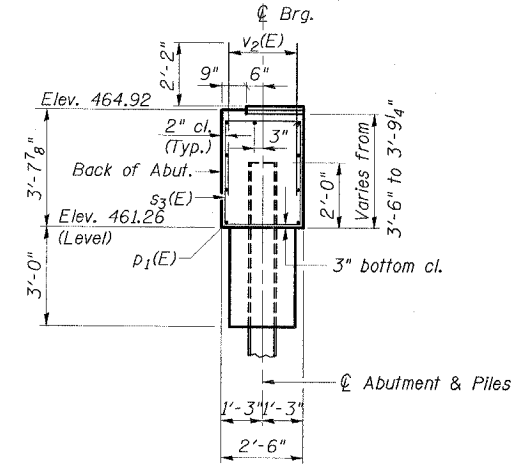
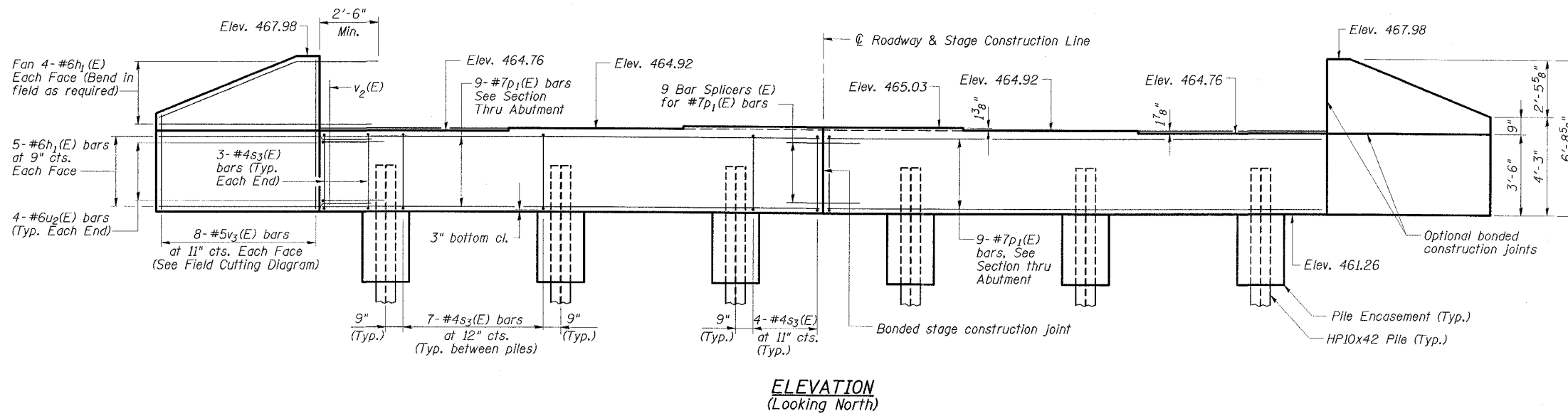


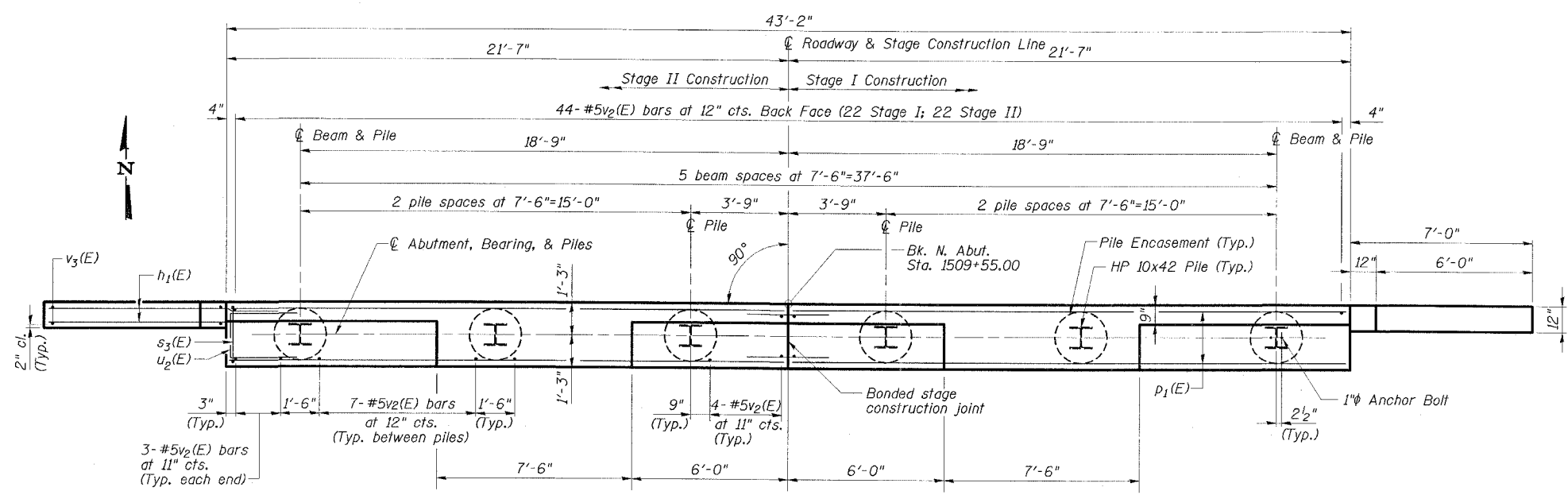
STATE OF ILLINOIS
DEPARTMENT OF TRANSPORTATION

ROUTE NO.	SECTION	QUALITY	30% SHEETS	SHEET NO.
FAP 328	*	CLAY	61	36
CONTRACT NO. 74037				
SHEET NO. 19				
26 SHEETS				



ELEVATION
(Looking North)

SECTION THRU ABUTMENT

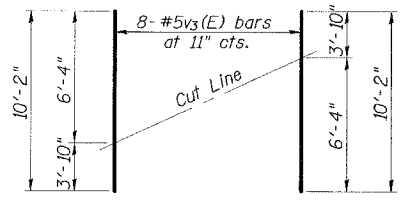


PLAN

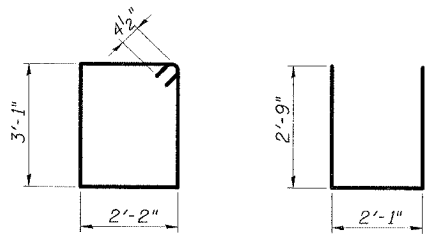
NORTH ABUTMENT
BILL OF MATERIAL

Bar	No.	Size	Length	Shape
h ₁ (E)	36	#6	9'-4"	—
p ₁ (E)	18	#7	21'-3"	—
s ₃ (E)	42	#4	11'-3"	□
u ₂ (E)	8	#6	7'-7"	⊏
v ₂ (E)	86	#5	4'-8"	—
v ₃ (E)	16	#5	10'-2"	—
Reinforcement Bars, Epoxy Coated		Pound	2290	
Concrete Structures		Cu. Yd.	17.5	
Structure Excavation		Cu. Yd.	109	
Furnishing Steel Piles HP10x42		Foot	300	
Driving Piles		Foot	300	
Pipe Underdrains for Structures, 4"		Foot	75	
Porous Granular Embankment (Special)		Cu. Yd	44	
Bar Splicers		Each	9	
Pile Shoes		Each	6	
Concrete Encasement		Cu. Yd	2.1	
Geocomposite Wall Drain		Sq. Yd	33	

PILE DATA
Pile Type & Size: HP10x42 with pile shoes
Nominal Required Bearing: 335 kips
Allowable Resistance Available: 111 kips
Estimated Pile Length: 50'
No. of Production Piles: 6
No. of Test Piles: 0



BAR v₃(E)



BAR s₃(E) BAR u₂(E)

BAR BENDING DETAILS

- NOTES**
- See Dwg. No. 2 of 26 for backfill required for abutment construction.
 - Pour steps monolithically with cap.
 - Space reinforcement in cap to miss anchor bolts.
 - For pile details and concrete encasement details see Dwg. No. 24 of 26.

NORTH ABUTMENT
US ROUTE 45 OVER
BUCK CREEK
FAP RTE 328-SECTION (6BR-2)B-1
CLAY COUNTY
STATION 1510+13.00
STRUCTURE NO. 013-0041

ESCA
CONSULTANTS, INC.

DESIGNED BY:	ELH	02/07
DRAWN BY:	CJ	02/07
CHECKED BY:	ELH	02/07
APPROVED BY:	RDP	02/07