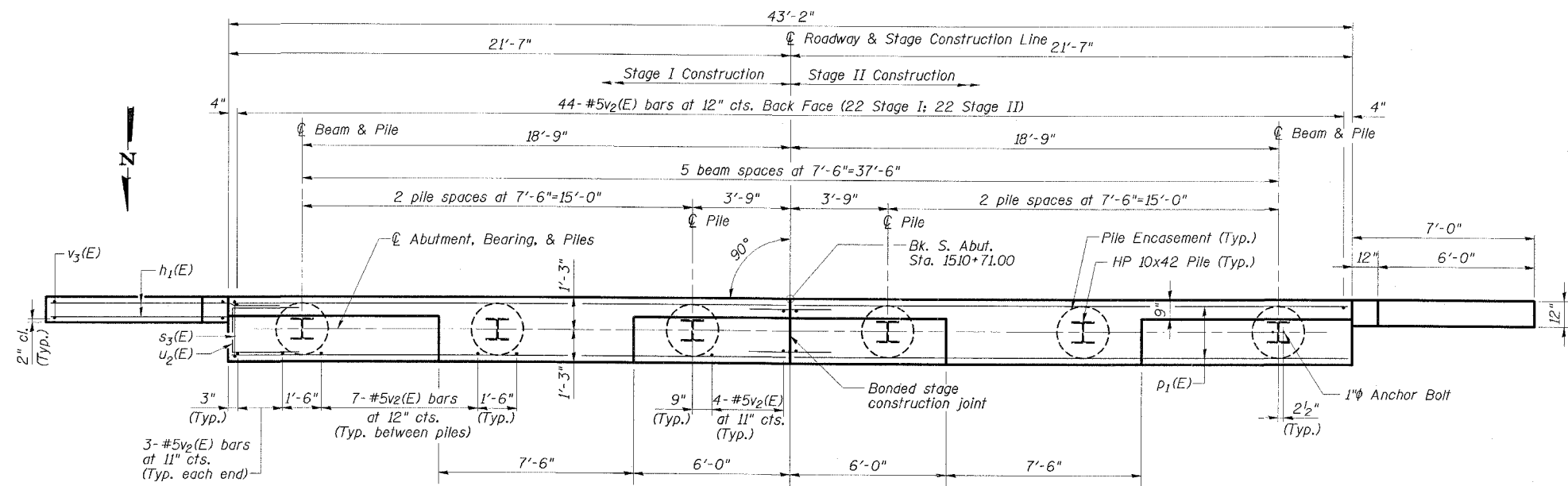
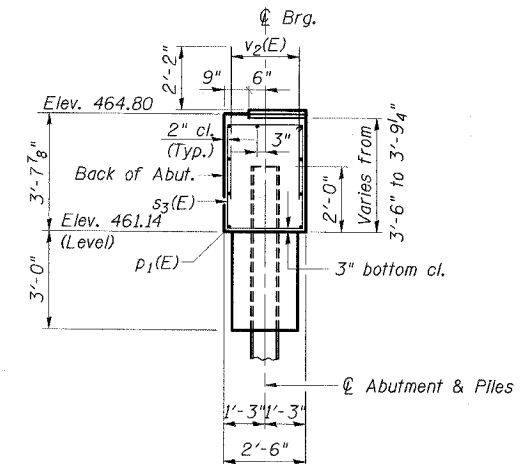
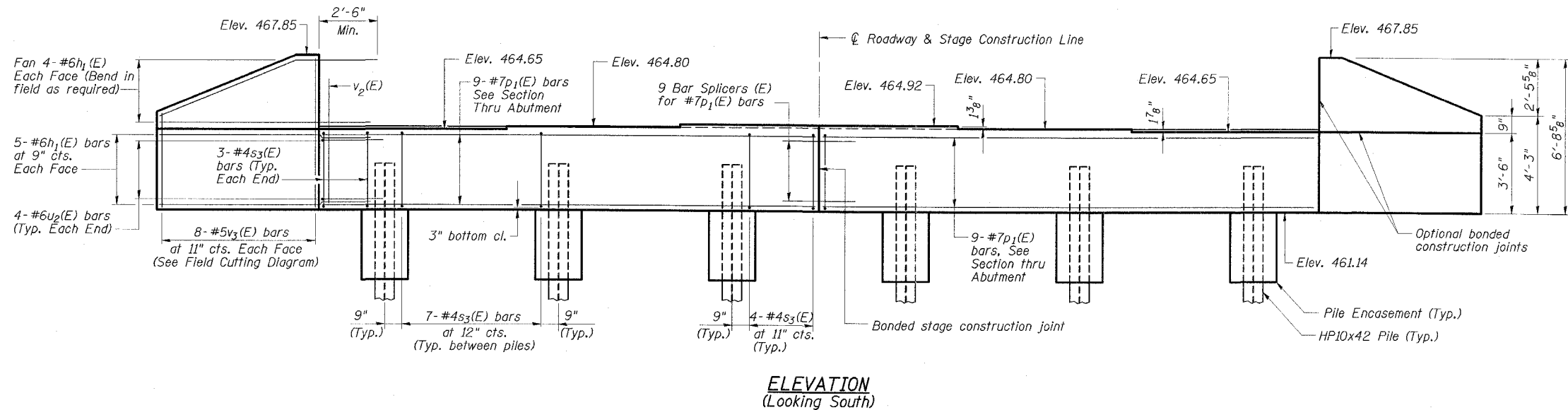


STATE OF ILLINOIS  
DEPARTMENT OF TRANSPORTATION

ROUTE NO.	SECTION	COUNTY	SHEETS	SHEET NO.
FAP 328	*	CLAY	61	37
CONTRACT NO. 74037				26 SHEETS

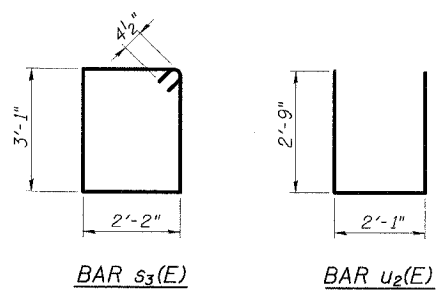
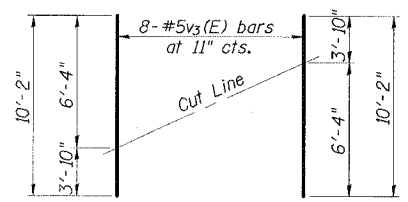


SECTION THRU ABUTMENT

SOUTH ABUTMENT  
BILL OF MATERIAL

Bar	No.	Size	Length	Shape
$h_1(E)$	36	#6	9'-4"	—
$p_1(E)$	18	#7	21'-3"	—
$s_3(E)$	42	#4	11'-3"	□
$u_2(E)$	8	#6	7'-7"	□
$v_2(E)$	86	#5	4'-8"	—
$v_3(E)$	16	#5	10'-2"	—
Reinforcement Bars, Epoxy Coated		Pound	2290	
Concrete Structures		Cu. Yd.	17.5	
Structure Excavation		Cu. Yd.	109	
Furnishing Steel Piles HP10x42		Foot	275	
Driving Piles		Foot	275	
Pipe Underdrains for Structures, 4"		Foot	75	
Porous Granular Embankment (Special)		Cu. Yd	44	
Bar Splicers		Each	9	
Pile Shoes		Each	6	
Concrete Encasement		Cu. Yd	2.1	
Geocomposite Wall Drain		Sq. Yd	33	
Test Pile Steel HP10x42		Each	1	

**PILE DATA**  
 Pile Type & Size: HP10x42 with pile shoes  
 Nominal Required Bearing: 335 kips  
 Allowable Resistance Available: 111 kips  
 Estimated Pile Length: 55'  
 No. of Production Piles: 5  
 No. of Test Piles: 1



- NOTES**
- See Dwg. No. 2 of 26 for backfill required for abutment construction.
  - Pour steps monolithically with cap.
  - Space reinforcement in cap to miss anchor bolts.
  - For pile details and concrete encasement details see Dwg. No. 24 of 26.

**ESCA**  
CONSULTANTS, INC.

DESIGNED BY:	ELH	02/07
DRAWN BY:	CJ	02/07
CHECKED BY:	ELH	02/07
APPROVED BY:	RDP	02/07

**FIELD CUTTING DIAGRAM**  
 Order  $v_3(E)$  full length. Cut as shown and use remainder of bars in opposite face.

BAR BENDING DETAILS

**SOUTH ABUTMENT**  
**US ROUTE 45 OVER**  
**BUCK CREEK**  
**FAP RTE 328-SECTION (6BR-2)B-1**  
**CLAY COUNTY**  
**STATION 1510+13.00**  
**STRUCTURE NO. 013-0041**