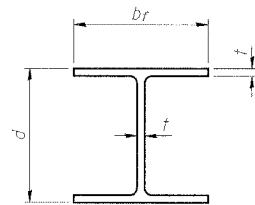


STATE OF ILLINOIS
DEPARTMENT OF TRANSPORTATION

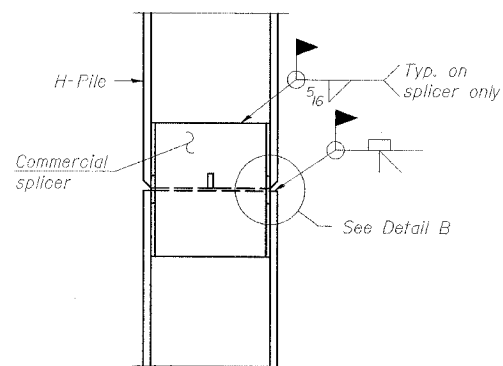
ROUTE NO.	SECTION	COUNTY	SHEETS	SHEET NO.
FAP 328	*	CLAY	61	41
FED. ROAD DIST. NO. #	ILLINOIS	ESTIMATED PROJECT - A&B		

CONTRACT NO. 74037 *16BR-21B-1

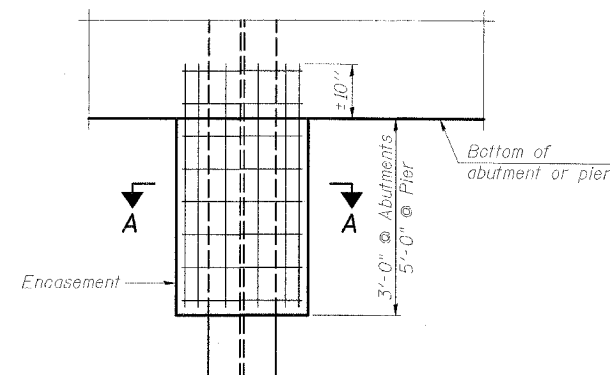


STEEL PILE TABLE

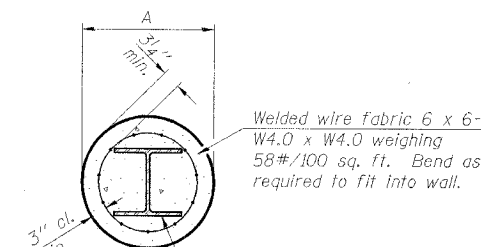
Designation	Depth d	Flange width br	Web and Flange thickness t	Encasement diameter A
HP 14x117	14 1/4"	14 7/8"	13/16"	30"
x102	14"	14 3/4"	1/16"	30"
x89	13 7/8"	14 3/4"	5/8"	30"
x73	13 5/8"	14 5/8"	1/2"	30"
HP 12x84	12 1/4"	12 1/4"	11/16"	24"
x74	12 1/8"	12 1/4"	5/8"	24"
x63	12"	12 1/8"	1/2"	24"
x53	11 3/4"	12"	7/16"	24"
HP 10x57	10"	10 1/4"	9/16"	24"
x42	9 3/4"	10 1/8"	7/16"	24"
HP 8x36	8"	8 1/8"	7/16"	18"



ELEVATION



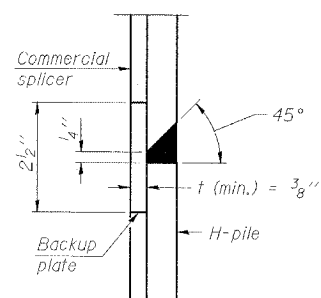
ELEVATION



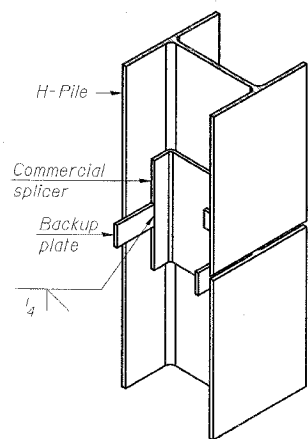
SECTION A-A

Note: H-pile
Forms for encasement may be omitted when soil conditions permit. Cost of welded wire fabric and excavation is included in the cost of Concrete Encasement

PILE ENCASEMENT

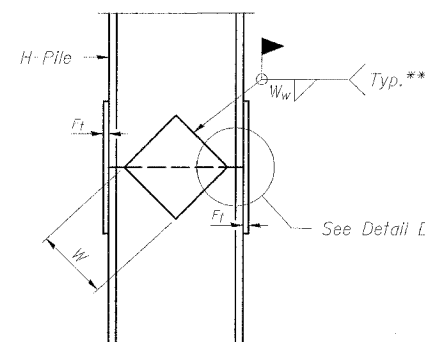


DETAIL "B"

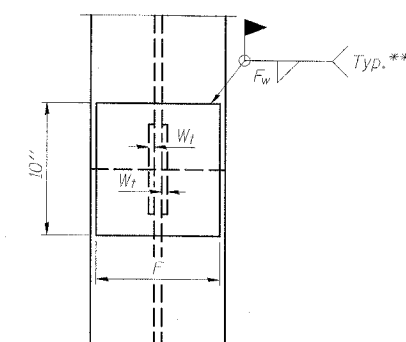


ISOMETRIC VIEW

WELDED COMMERCIAL SPLICE



ELEVATION



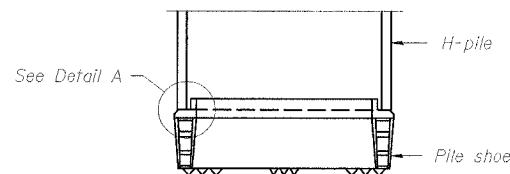
END VIEW

Designation	F	F _t	F _w	W	W _t	W _w
HP 14x117	12 1/2"	1"	7/8"	7 3/4"	5 9/8"	1/2"
x102	12 1/2"	7/8"	3/4"	7 3/4"	5 9/8"	1/2"
x89	12 1/2"	3/4"	11/16"	7 3/4"	5 9/8"	1/2"
x73	12 1/2"	5/8"	9/16"	7 3/4"	5 9/8"	1/2"
HP 12x84	10"	7/8"	11/16"	6 1/2"	5 9/8"	1/2"
x74	10"	7/8"	11/16"	6 1/2"	5 9/8"	1/2"
x63	10"	5/8"	1/2"	6 1/2"	1/2"	3/8"
x53	10"	5/8"	1/2"	6 1/2"	1/2"	3/8"
HP 10x57	8"	3/4"	9/16"	5 1/4"	1/2"	3/8"
x42	8"	5/8"	9/16"	5 1/4"	1/2"	3/8"
HP 8x36	7"	5/8"	7/16"	4 1/4"	1/2"	3/8"

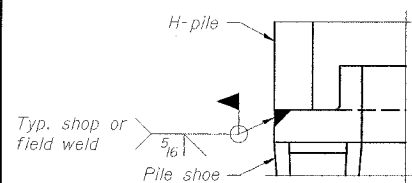
WELDED PLATE FIELD SPLICE

Note:
The steel H-piles shall be according to AASHTO M270 Grade 50.

STEEL H-PILE DETAILS
US ROUTE 45 OVER
BUCK CREEK
FAP RTE 328-SECTION (6BR-2)B-1
CLAY COUNTY
STATION 1510+13.00
STRUCTURE NO. 013-0041

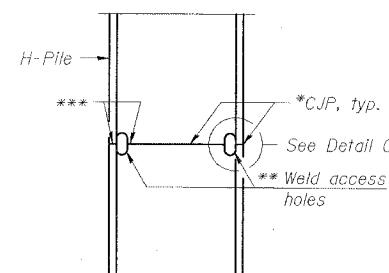


ELEVATION

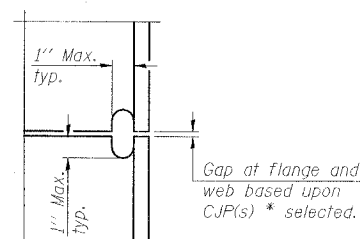


DETAIL A

H-PILE SHOE ATTACHMENT

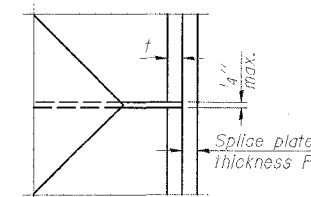


ELEVATION



DETAIL C

COMPLETE PENETRATION WELD SPLICE



DETAIL D

ESCA
CONSULTANTS, INC.
DESIGNED BY: ELH 01/07
DRAWN BY: CJ 01/07
CHECKED BY: ELH 01/07
APPROVED BY: RDP 01/07

- * Use joint conforming to Figure 3.4 in AWS D1.1, Structure Welding Code - Steel.
- ** Preparation per Fig. 5.2 in AWS D1.1, Structure Welding Code - Steel.
- *** Interrupt welds 1/4" from end of each pile.