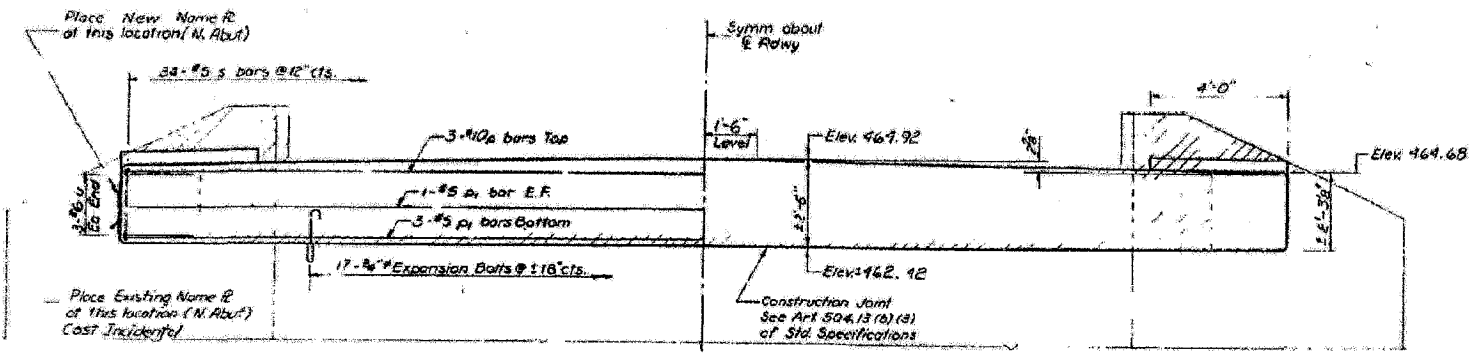


FOR INFORMATION ONLY

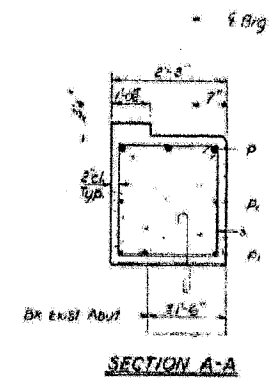
ROUTE NO.	SECTION	COUNTY	SHEET NO.	SHEET NO.
FAP 328	*	CLAY	61	49
CONTRACT NO. 74037 * IGBR-218-1				

STATE OF ILLINOIS
DEPARTMENT OF TRANSPORTATION

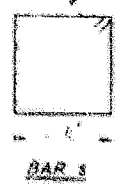
DATE	BY	CHECKED	DATE
12-7	C/A	W	11



ELEVATION



SECTION A-A

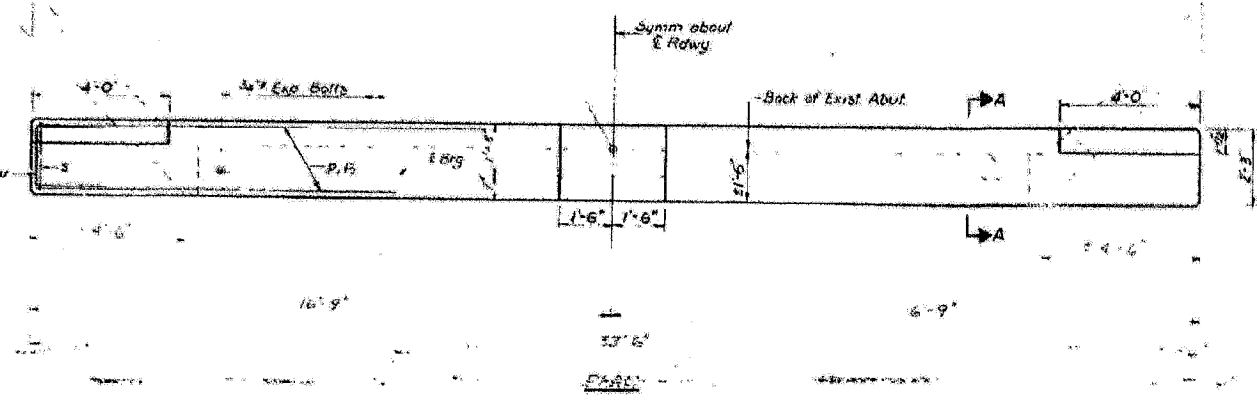


BAR S



BAR U

N. Abut Sta. 1509+57
S. Abut Sta. 1510+93



BILL OF MATERIALS

NO.	DESCRIPTION	QUANTITY	UNIT
1	CONCRETE		
2	REINFORCEMENT		
3	EXPANSION BOLTS		
4	ANCHOR BOLTS		
5	WELDED WIRE FABRIC		
6	FORMWORK		
7	PAINT		
8	GRANULAR FILL		
9	ASPHALT		
10	STEEL BRACKETS		

DESIGNED: G.F. O'Connell
CHECKED: J.M. Burt
DRAWN: G.C.D.
CHECKED: J.M.P.

EXAMINED: [Signature]
PASSED: [Signature]
APPROVED: [Signature]

APR 25 1971

NOTE
Hatched area indicates Concrete Removal. Reinforcement extending into removed area shall be cleaned and incorporated into the new construction.
Expansion bolts shall be anchored in adjacent concrete. All edges shall have standard 45° chamfers except as noted.

NORTH & SOUTH ABUTMENTS
FRATE 26 SEC. 6 BRIDGE
CLAY COUNTY
STA. 1510+00