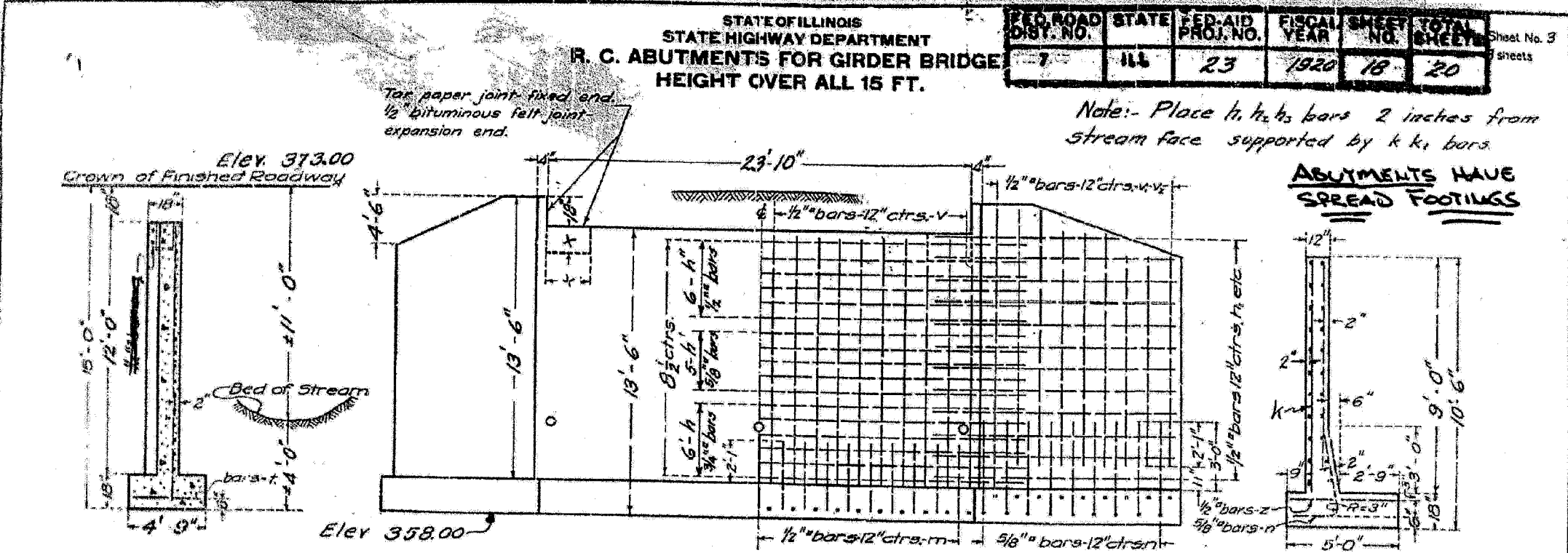


FOR INFORMATION ONLY

ROUTE NO.	SECTION	COUNTY	SHEET NO.	TOTAL SHEETS
FAP 328	*	CLAY	61	51
CONTRACT NO. 74037 * (GBR-218-1)				

FED. ROAD DIST. NO.	STATE	FED. AID PROJ. NO.	FISCAL YEAR	SHEET NO.	TOTAL SHEETS
7	ILL	23	1920	18	20

STATE OF ILLINOIS
STATE HIGHWAY DEPARTMENT
R. C. ABUTMENTS FOR GIRDER BRIDGE
HEIGHT OVER ALL 15 FT.



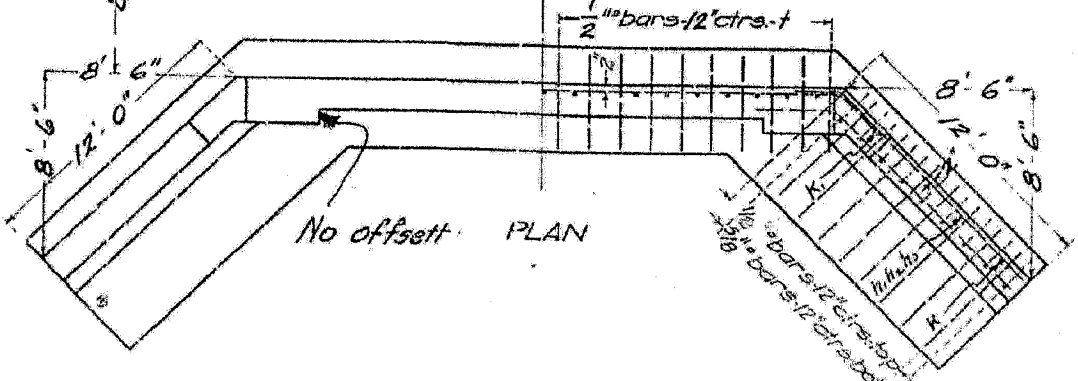
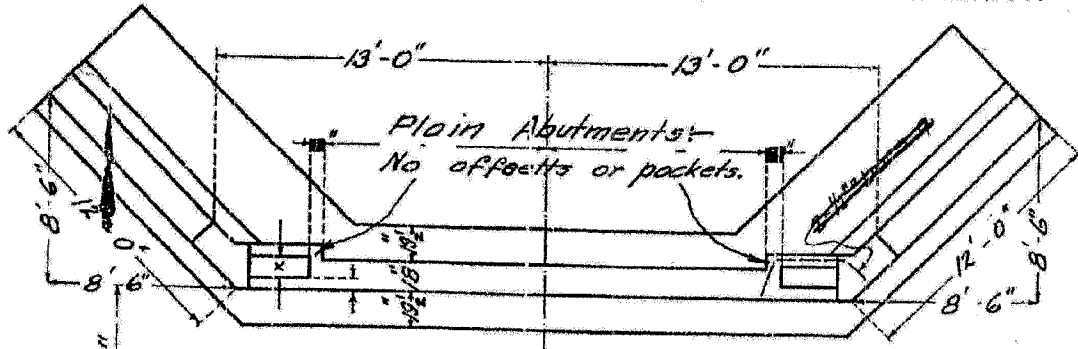
SECTION OF ABUTMENT

FRONT ELEVATION SHOWING OUTLINES SHOWING REINFORCEMENT

END OF WING

HORIZONTAL STEEL - MAIN WALL

Bars	Length of Bridge Seat.							
	19'-0"	20'-0"	21'-0"	22'-0"	23'-0"	24'-0"	25'-0"	26'-0"
No.	6	7	7	5	5	6	6	7
h Size	3/4"	3/4"	3/4"	3/4"	3/4"	3/4"	3/4"	3/4"
Cts.	8 1/2	7 1/2	7	10 1/2	9 1/2	8 1/2	8	7 1/2
No.	5	5	6	4	5	5	5	5
h Size	3/4"	3/4"	3/4"	3/4"	3/4"	3/4"	3/4"	3/4"
Cts.	8 1/2	7 1/2	7	10 1/2	9 1/2	8 1/2	8	7 1/2
No.	6	7	7	5	5	6	6	7
h Size	3/4"	3/4"	3/4"	3/4"	3/4"	3/4"	3/4"	3/4"
Cts.	8 1/2	7 1/2	7	10 1/2	9 1/2	8 1/2	8	7 1/2
Thickness of Wall	12	12	12	18	18	18	18	18



BILL OF MATERIAL

Bars	No.	Size	Length
v	50	1/2"	11'-6"
v ₁	8	1/2"	12'-6"
v ₂	12	1/2"	17'-0"
v ₃	16	1/2"	9'-6"
v ₄	12	1/2"	8'-0"
h	12	3/4"	30'-0"
h ₁	10	3/4"	28'-0"
h ₂	12	3/4"	28'-0"
k	4	1/2"	9'-0"
k ₁	4	1/2"	13'-0"
h ₃	36	1/2"	14'-0"
h ₄	8	1/2"	10'-6"
h ₅	4	1/2"	7'-6"
m	50	1/2"	3'-0"
n	48	5/8"	6'-0"
t	50	1/2"	4'-6"
z	48	1/2"	4'-9"
z	48	1/2"	4'-9"

Reinforcing Steel - lbs. 3750
Concrete - cu Yds. 72.9

Class A concrete to be used throughout. Proportions 1:2 1/2:4.

STATION 1510+00
SECTION 6A
CLAY COUNTY

DESIGNED BY *Wm. D. Smith*
ENGINEER OF BRIDGES

CHECKED BY *Wm. D. Smith*
SUPERVISOR

APPROVED BY *L. J. Burch*
BRIDGE ENGINEER