

F.A.P. RTE.	SECTION	COUNTY	TOTAL SHEETS	SHEET NO.
328	*	WAYNE	19	1

• (24-2,24Z)RS-1

D-97-036-04

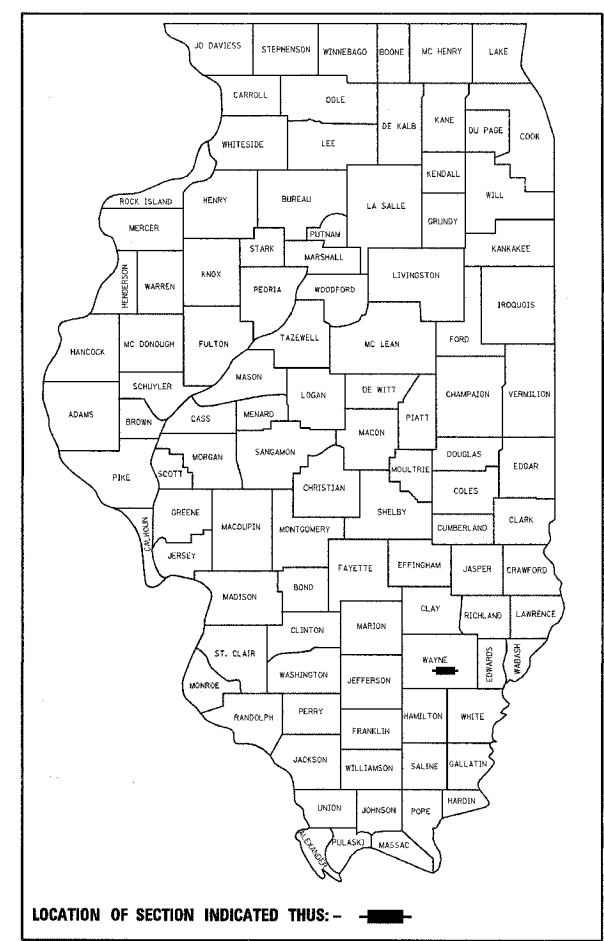
STATE OF ILLINOIS
DEPARTMENT OF TRANSPORTATION
DIVISION OF HIGHWAYS

**PROPOSED
HIGHWAY PLANS**

FAP ROUTE 328 (IL 15)
SECTION (24-2,24Z)RS-1
PROJECT: F-0328(021)
WAYNE COUNTY

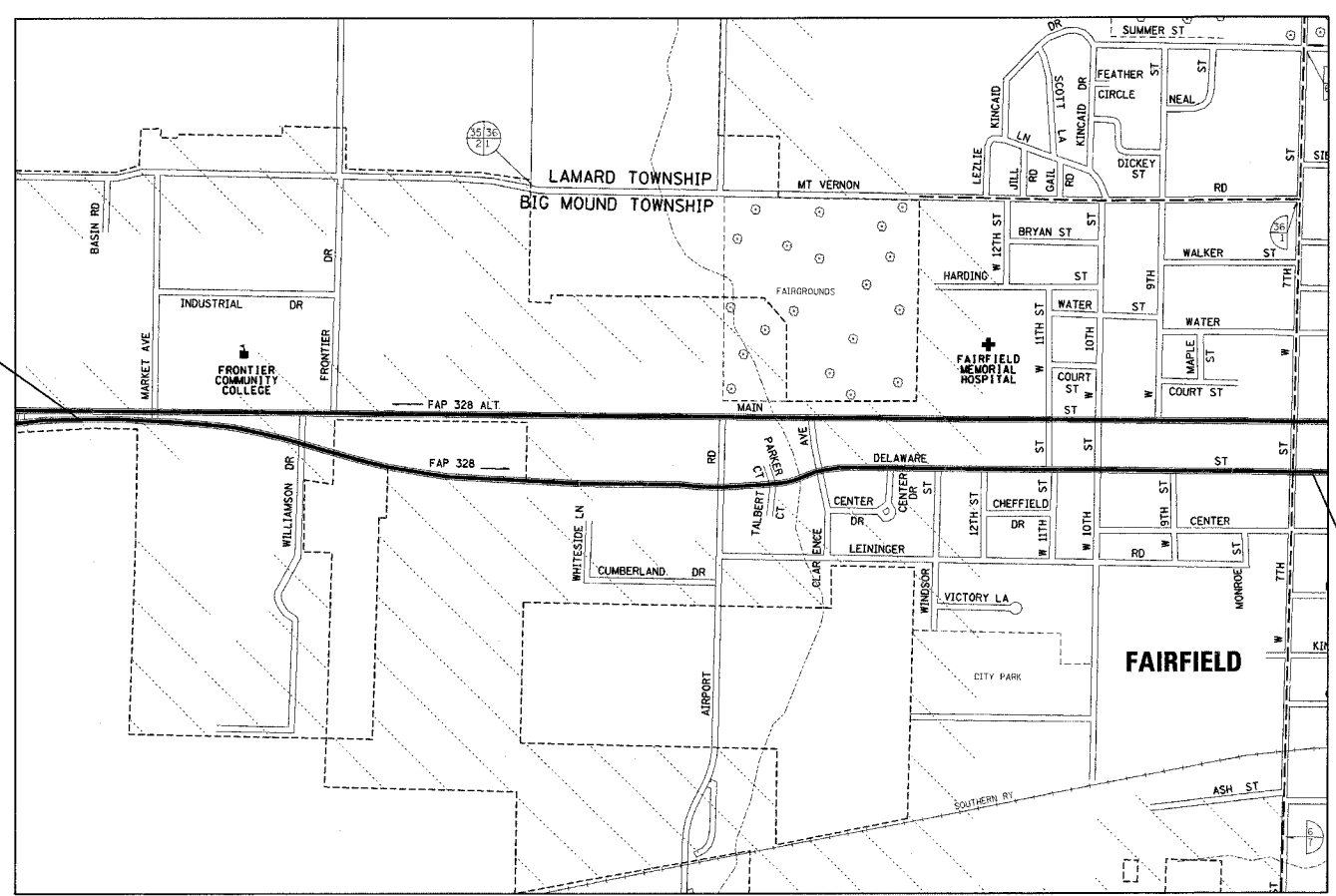
C-97-074-04

FOR INDEX OF SHEETS, SEE SHEET NO. 2

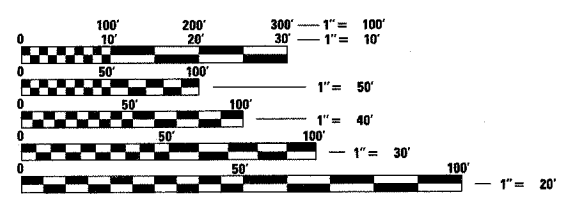


ADT = 7022 (2005)

PROJECT BEGINS
EB IL 15
STA 0+35



PROJECT ENDS
EB IL 15
STA 85+98



FULL SIZE PLANS HAVE BEEN PREPARED USING STANDARD ENGINEERING SCALES. REDUCED SIZED PLANS WILL NOT CONFORM TO STANDARD SCALES. IN MAKING MEASUREMENTS ON REDUCED PLANS, THE ABOVE SCALES MAY BE USED.

J.U.L.I.E.
JOINT UTILITY LOCATION INFORMATION FOR EXCAVATION
1-800-892-0123

GROSS LENGTH = 8563 FT = 1.62 MILES
NET LENGTH = 8563 FT = 1.62 MILES

STATE OF ILLINOIS
DEPARTMENT OF TRANSPORTATION
DIVISION OF HIGHWAYS

SUBMITTED March 23rd 2007

Christine M. Reed
DEPUTY DIRECTOR OF HIGHWAYS, REGION ENGINEER

May 11, 2007
Eric E. Harsh
INTERIM ENGINEER OF DESIGN AND ENVIRONMENT

May 11, 2007
Milton R. Sees, P.E.
DIRECTOR OF HIGHWAYS, CHIEF ENGINEER

**PRINTED BY THE AUTHORITY
OF THE STATE OF ILLINOIS**