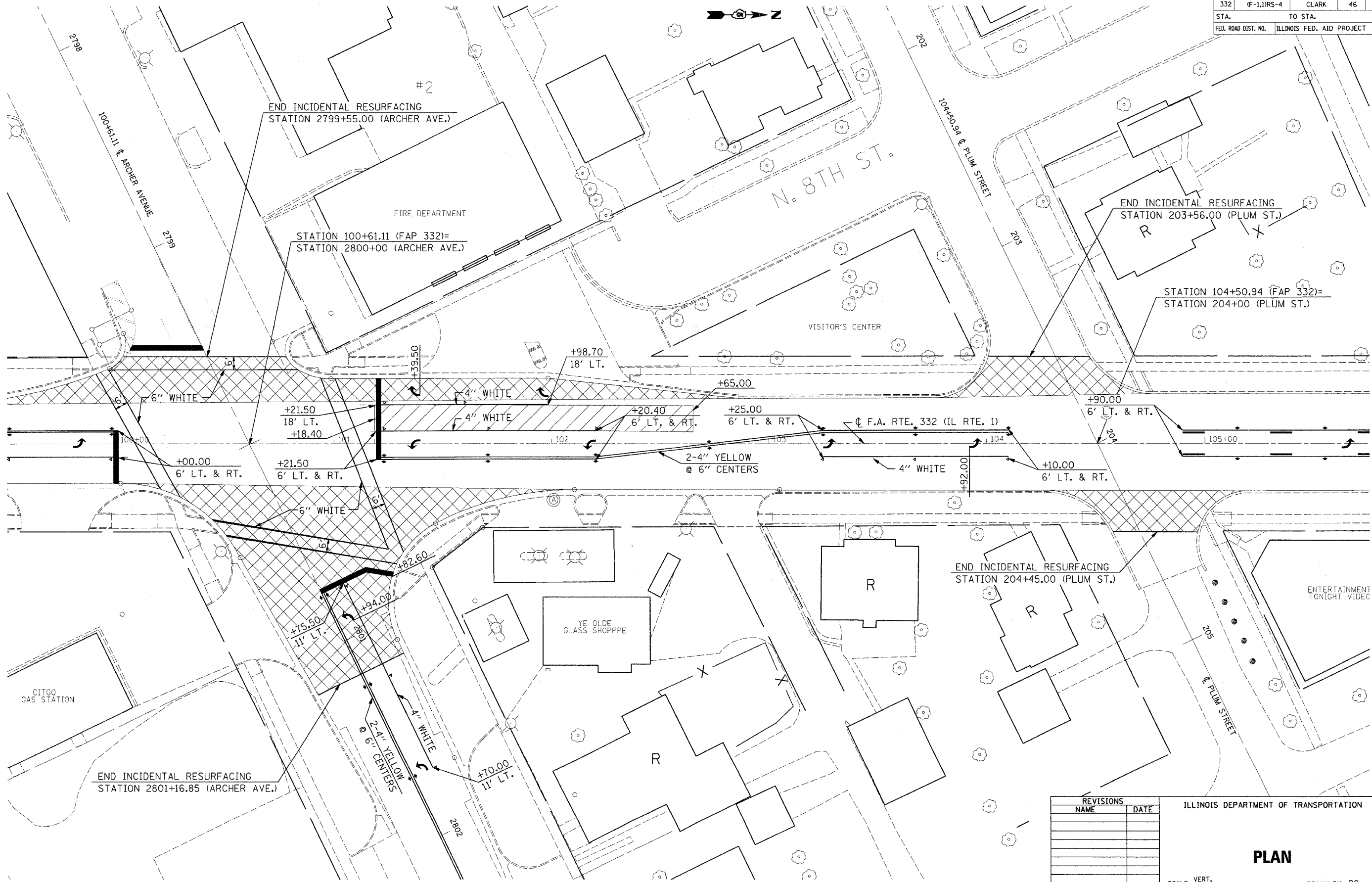


F.A.P. RTE.	SECTION	COUNTY	TOTAL SHEETS	SHEET NO.
332	(F-1, IRS-4	CLARK	46	30
STA.		TO STA.		
FED. ROAD DIST. NO.		ILLINOIS FED. AID PROJECT		



PLOT DATE = 3/13/2007  
 PLOT SCALE = 28.000' / IN.  
 USER NAME = staffanmk

REVISIONS	
NAME	DATE

ILLINOIS DEPARTMENT OF TRANSPORTATION

**PLAN**

SCALE: VERT. HORIZ. DATE 05/06

DRAWN BY RC  
CHECKED BY DH

INCIDENTAL HOT-MIX ASPHALT SURFACING, 2 1/2"
 
 HOT-MIX ASPHALT SURFACE REMOVAL, 5"