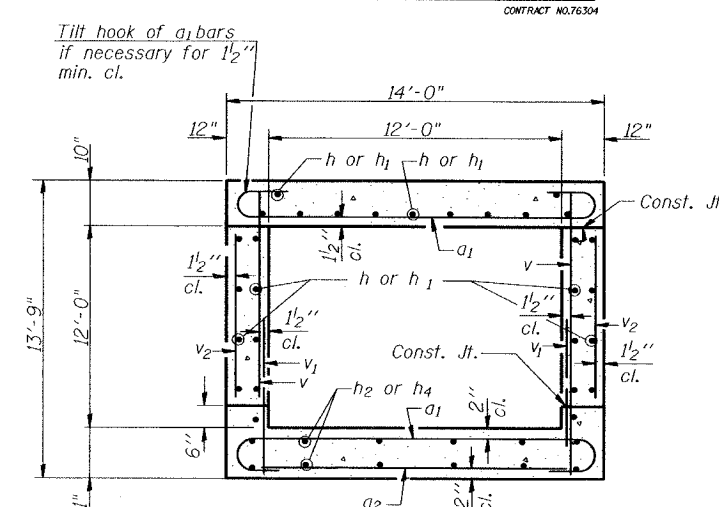
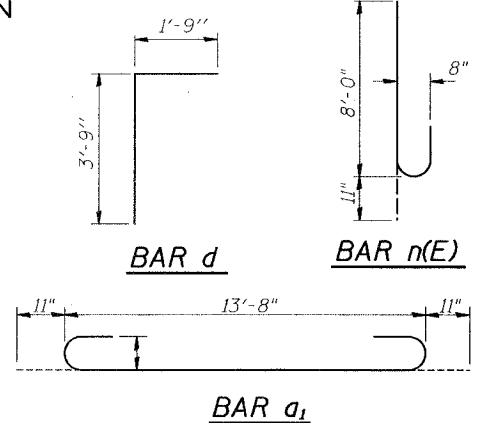
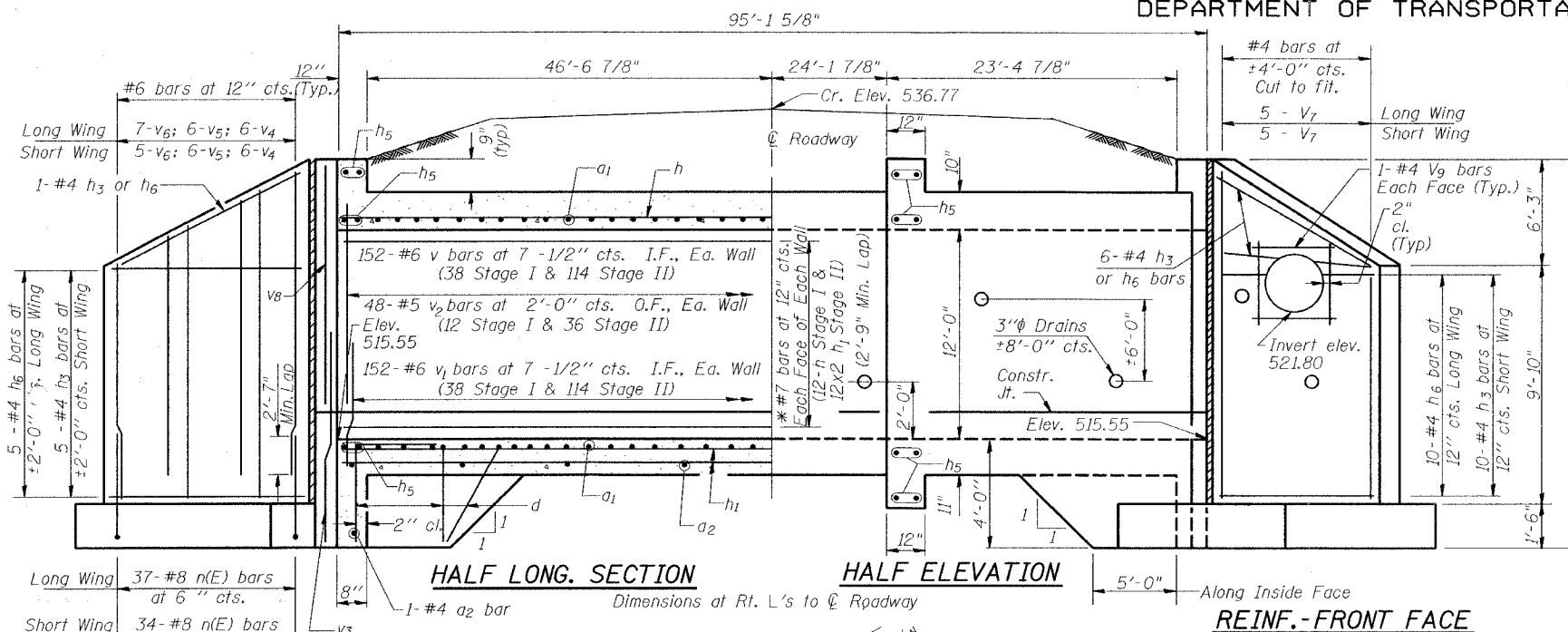


STATE OF ILLINOIS
DEPARTMENT OF TRANSPORTATION

ROUTE NO.	SECTION	COUNTY	TOTAL SHEETS	SHEET NO.
F.A.U. 9393	37-BR	MADISON	38	21
FED. ROAD DIST. NO. 7	ILLINOIS	FED. AID PROJECT		

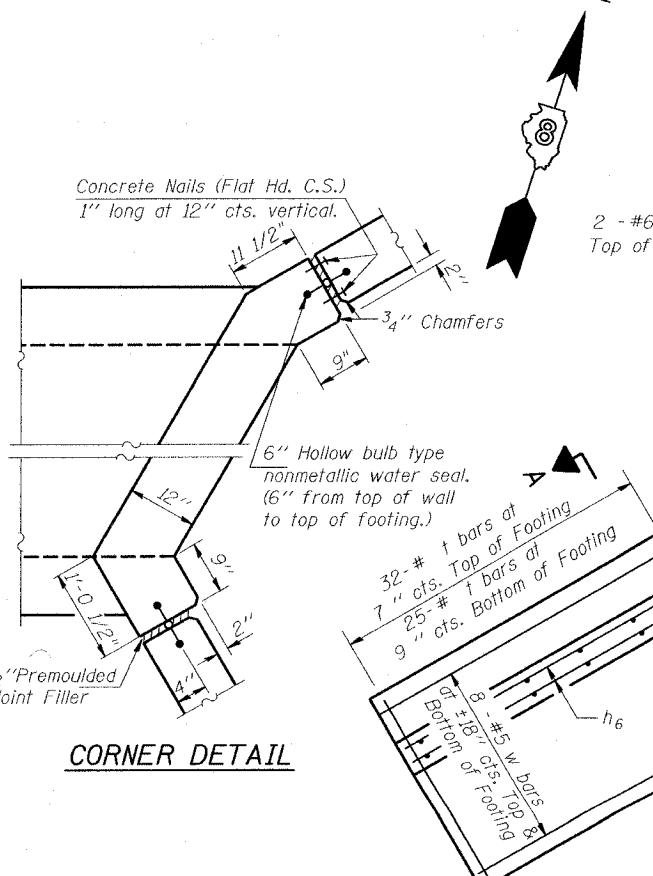
CONTRACT NO. 76304

SHEET NO. 3
5 SHEETS

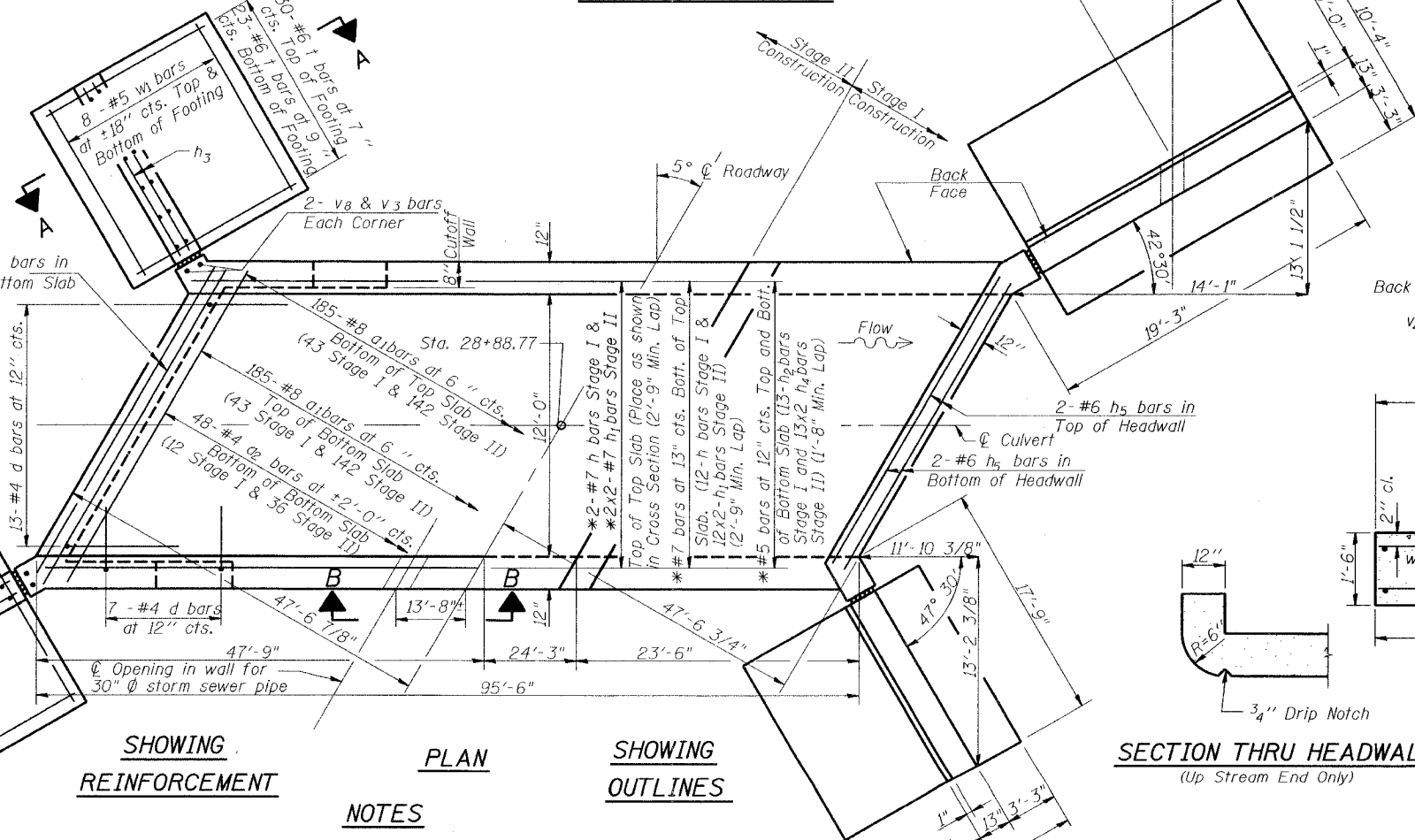


SECTION THRU BARREL

REINF.-BACK FACE



CORNER DETAIL



SHOWING REINFORCEMENT

PLAN

SHOWING OUTLINES

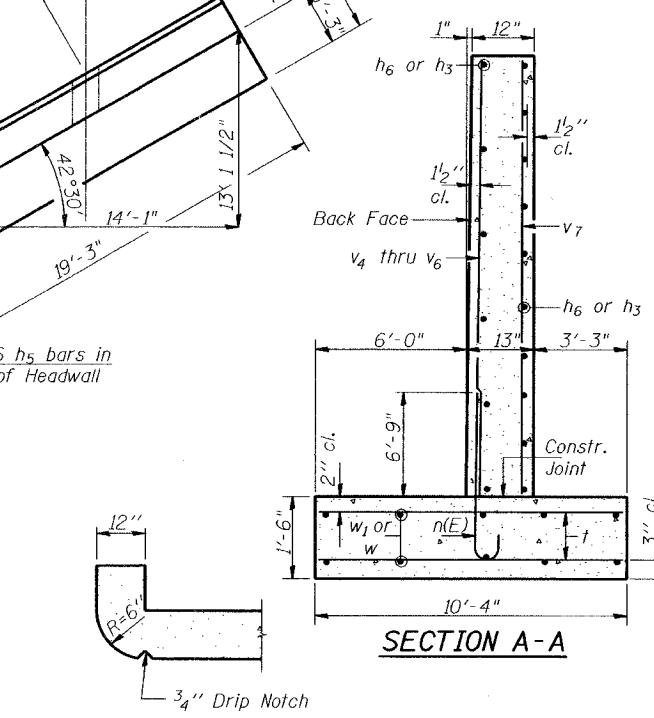
NOTES

Bars indicated thus 12 x 4-#5 etc. indicates 12 lines of bars with 4 lengths per line.
Reinforcement bars designated (E) shall be epoxy coated.
All construction joints shall be bonded.
Max. soil pressure under footing = 2702 psf (Max. Allowable = 3000 psf)
At stage const. Jt. bars denoted by "*" shall be lapped with bar splicers of same size. See sht. 4 of 5.
I.F. = Inside Face O.F. = Outside Face E.F. = Each Face
See sht 2 of 5 for section B-B

DESIGNED	ALN
CHECKED	
DRAWN	J1
CHECKED	ALN

BILL OF MATERIAL

Bar	No.	Size	Length	Shape
a1	370	#8	15'-6"	[U]
a2	48	#4	13'-8"	[—]
d	54	#4	5'-6"	[L]
h	62	#7	23'-2"	[—]
h1	124	#7	37'-2"	[—]
h2	26	#5	23'-2"	[—]
h3	44	#4	16'-8"	[—]
h4	52	#5	36'-8"	[—]
h5	20	#6	11'-8"	[—]
h6	44	#4	18'-2"	[—]
n(E)	142	#8	8'-11"	[U]
t	220	#6	10'-0"	[—]
v	304	#6	12'-2"	[—]
v1	304	#6	2'-6"	[—]
v2	96	#5	11'-4"	[—]
v3	8	#5	6'-0"	[—]
v4	24	#6	11'-10"	[—]
v5	24	#6	9'-9"	[—]
v6	24	#6	7'-9"	[—]
v7	20	#4	15'-7"	[—]
v8	8	#5	12'-10"	[—]
v9	8	#4	3'-2"	[—]
v10	16	#6	4'-4"	[—]
w	32	#5	18'-2"	[—]
w1	32	#5	16'-8"	[—]
Concrete Box Culverts		Cu. Yd.	254.1	
Reinforcement Bars, Epoxy Coated		Pound	3380	
Reinforcement Bars		Pound	46,140	
Bar Splicers		Each	88	



SECTION THRU HEADWALL
(Up Stream End Only)

REVISIONS	
NAME	DATE

ILLINOIS DEPARTMENT OF TRANSPORTATION
BOX CULVERT DETAILS
MAIN ST. OVER UNNAMED
TRIBUTARY TO WENDELL BRANCH
F.A.U. ROUTE 9393 - SEC. 37BR
MADISON COUNTY
STATION 28+88.77
STRUCTURE NO. 060-2407
SCALE: VERT. DATE DATE HORIZ. DRAWN BY CHECKED BY