

F.A.U. RTE.	SECTION	COUNTY	TOTAL SHEETS	SHEET NO.
9251	28-3RS-1	ST CLAIR	21	1

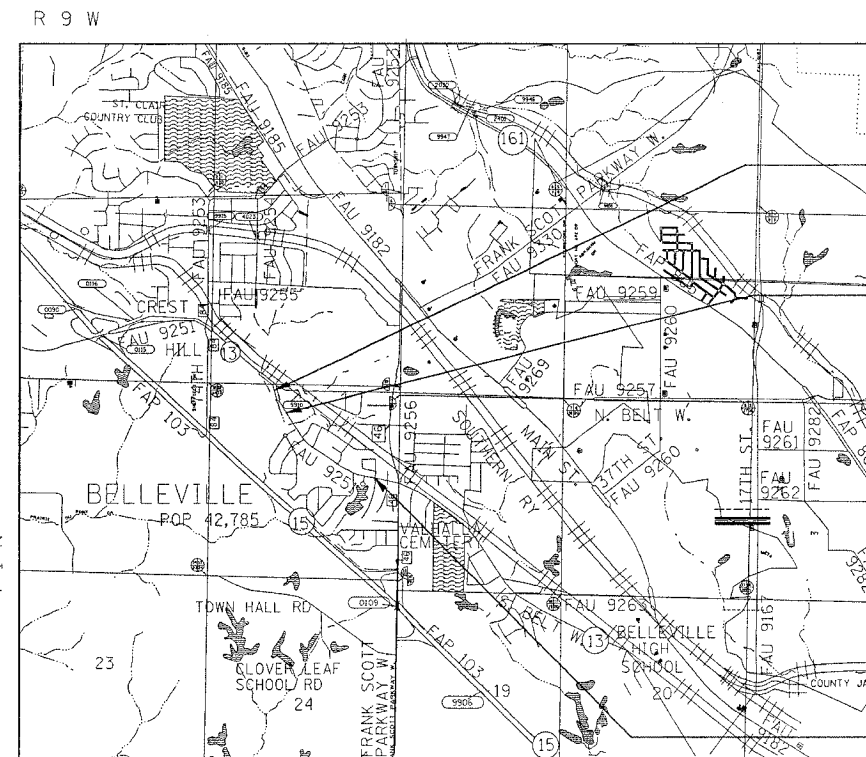
STATE OF ILLINOIS
DEPARTMENT OF TRANSPORTATION
DIVISION OF HIGHWAYS

**PROPOSED
HIGHWAY PLANS**

FAU ROUTE 9251 (IL 13)
SECTION 28-3RS-1
PROJECT : M-9251(009)
ST. CLAIR COUNTY
RESURFACING
C-98-071-07

INDEX OF SHEETS

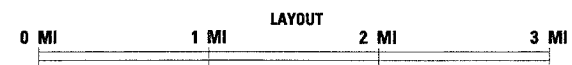
1. COVER SHEET
2. GENERAL NOTES & STANDARDS
3. SUMMARY OF QUANTITIES
4. TYPICAL SECTIONS
5. SCHEDULES
6. RESURFACING DETAILS
- 7.-13. PLAN VIEW
14. DETECTOR LOOP REPLACEMENT
- 15.-21. PAVEMENT MARKING PLAN



END OF PROJECT
STA. 1244 + 66.41
LAT 38.54164
LONG -90.04779

STATION EQUATION
STA. 1238 + 77.46 AHEAD
= 238 + 77.46 BACK
(OFFSET = 9.375')

BEGINNING OF PROJECT
STA. 206 + 68.00
LAT 38.53533
LONG -90.03830



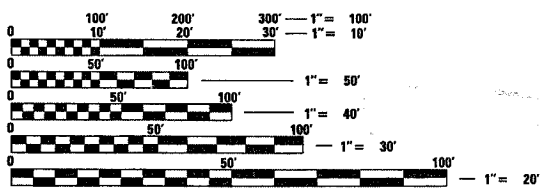
1" = 1 MILE

GROSS LENGTH = 3,798.41 FT. (0.719 MILES)
NET LENGTH = 3,798.41 FT. (0.719 MILES)

ADT
2005 4200
2027 5200
SU% 4.2
MU% 1.2

DESIGN DESIGNATION
URBAN MINOR ARTERIAL

MICROFILMED _____
REEL NUMBER _____
AWARDED _____
RESIDENT ENGINEER _____
AS BUILT CHANGES WERE MADE
ON THE FOLLOWING SHEETS



FULL SIZE PLANS HAVE BEEN PREPARED USING STANDARD
ENGINEERING SCALES. REDUCED SIZED PLANS WILL NOT
CONFORM TO STANDARD SCALES. IN MAKING MEASUREMENTS
ON REDUCED PLANS, THE ABOVE SCALES MAY BE USED.

J.U.L.I.E.
JOINT UTILITY LOCATION INFORMATION FOR EXCAVATION
1-800-892-0123

STATE OF ILLINOIS
DEPARTMENT OF TRANSPORTATION
DIVISION OF HIGHWAYS

SUBMITTED March 22, 2007

Mary C. Ramis
DEPUTY DIRECTOR OF HIGHWAYS
REGION FIVE ENGINEER

May 11, 2007

Eric E. Harn
ENGINEER OF DESIGN AND ENVIRONMENT

May 11, 2007

Miller R. Sew
DIRECTOR, DIVISION OF HIGHWAYS

PRINTED BY THE AUTHORITY
OF THE STATE OF ILLINOIS

PROJECT ENGINEER: PATTI LEBEAU (618) 346-3179
SQUAD LEADER: CHERYL KEPLAR (618) 346-3186

CONTRACT NO. 76A94