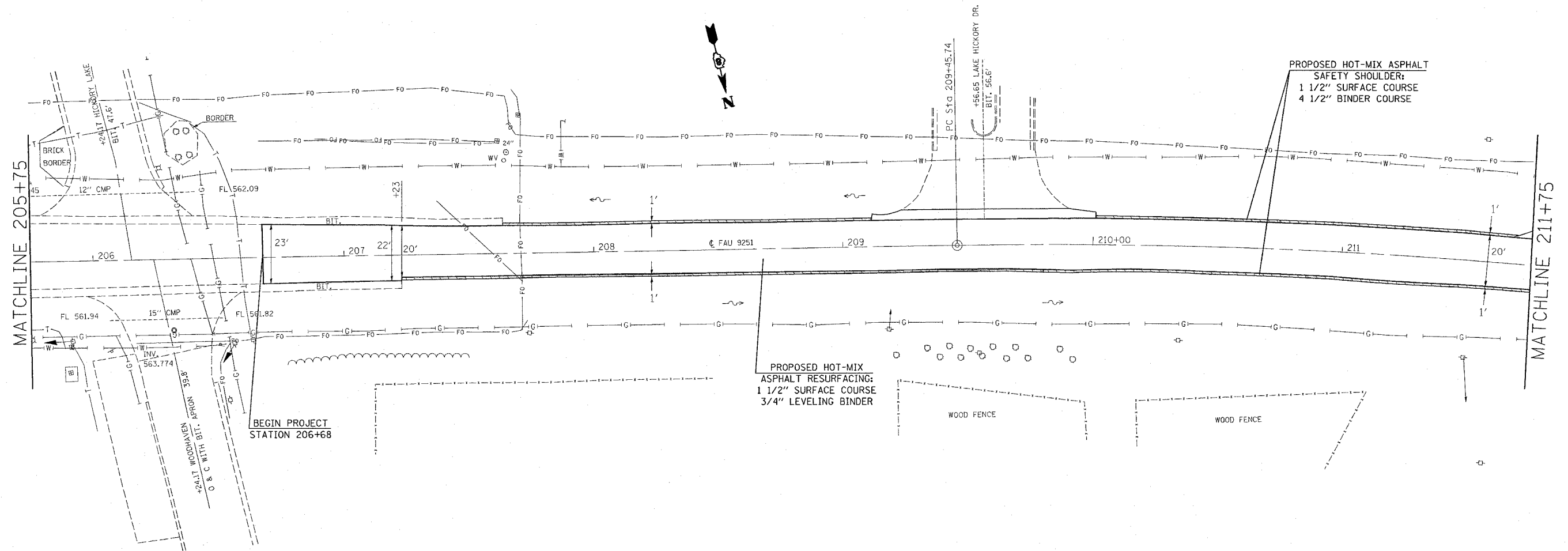


F.A.U. RTE.	SECTION	COUNTY	TOTAL SHEETS	SHEET NO.
9251	28-3RS-1	ST CLAIR	21	7
STA. 205+75		TO STA. 211+75		
FED. ROAD DIST. NO.	ILLINOIS	FED. AID PROJECT		



EARTH EXCAVATION (FOR PLACEMENT OF SAFETY SHOULDER)

REVISIONS	
NAME	DATE

ILLINOIS DEPARTMENT OF TRANSPORTATION
PLAN VIEW
 FAU 9251
 SECTION 28-3RS-1
 ST CLAIR COUNTY

SCALE: VERT. DATE HORIZ. DATE DRAWN BY CHECKED BY

PLOT DATE = 3/13/2007
 FILE NAME = c:\p\proj\mets\and66607\plan\p\in066607.dgn
 SCALE = 28000 / IN.
 REFERENCE = 48257