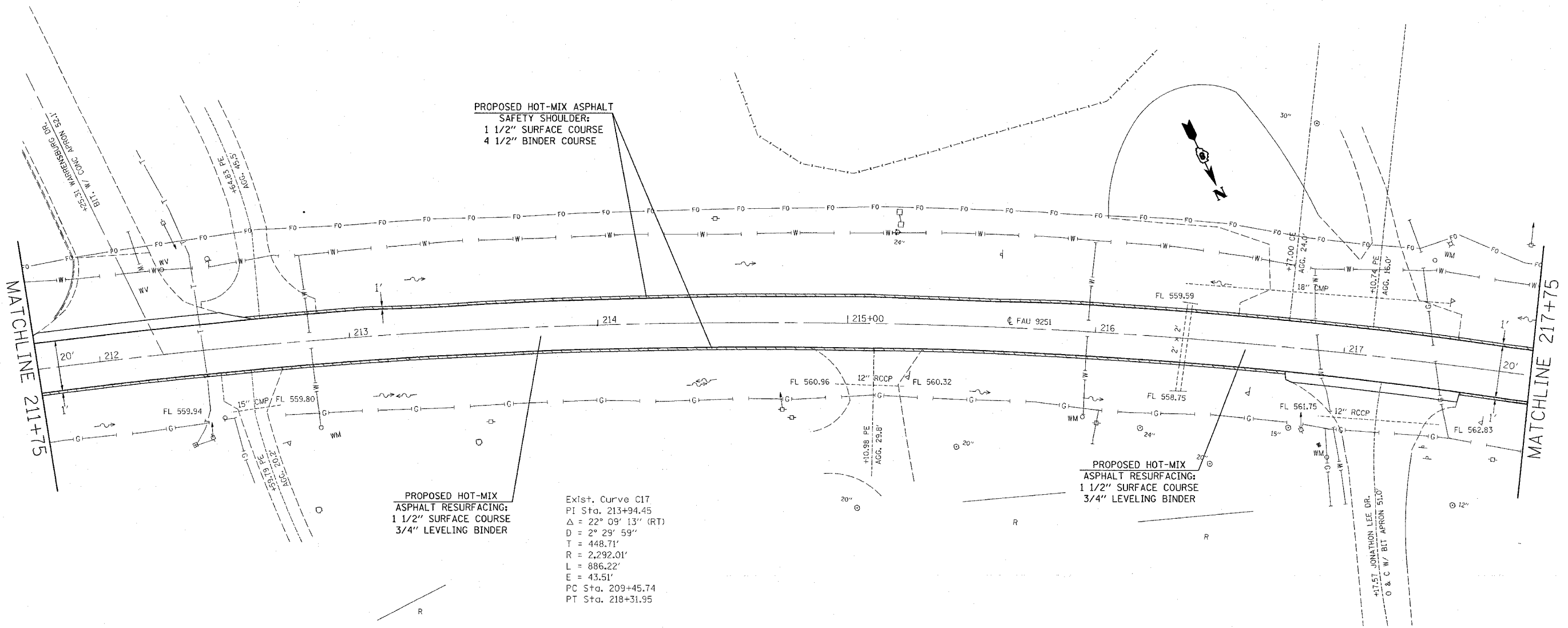


F.A.U. RTE.	SECTION	COUNTY	TOTAL SHEETS	SHEET NO.
9251	28-3RS-1	ST CLAIR	21	8
STA. 211+75		TO STA. 217+75		
FED. ROAD DIST. NO.		ILLINOIS FED. AID PROJECT		

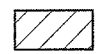


**PROPOSED HOT-MIX ASPHALT  
SAFETY SHOULDER:  
1 1/2" SURFACE COURSE  
4 1/2" BINDER COURSE**

**PROPOSED HOT-MIX  
ASPHALT RESURFACING:  
1 1/2" SURFACE COURSE  
3/4" LEVELING BINDER**

**PROPOSED HOT-MIX  
ASPHALT RESURFACING:  
1 1/2" SURFACE COURSE  
3/4" LEVELING BINDER**

Exist. Curve C17  
PI Sta. 213+94.45  
 $\Delta = 22^\circ 09' 13''$  (RT)  
 $D = 2^\circ 29' 59''$   
 $T = 448.71'$   
 $R = 2,292.01'$   
 $L = 886.22'$   
 $E = 43.51'$   
PC Sta. 209+45.74  
PT Sta. 218+31.95

 EARTH EXCAVATION (FOR PLACEMENT OF SAFETY SHOULDER)

REVISIONS	
NAME	DATE

ILLINOIS DEPARTMENT OF TRANSPORTATION  
**PLAN VIEW**  
FAU 9251  
SECTION 28-3RS-1  
ST CLAIR COUNTY  
SCALE: VERT. \_\_\_\_\_  
HORIZ. \_\_\_\_\_  
DATE \_\_\_\_\_ DRAWN BY \_\_\_\_\_  
CHECKED BY \_\_\_\_\_

PLOT DATE = 3/13/2007  
FILE NAME = c:\paw\mca\ed066807\plan\p\066807a.dgn  
PLOT SCALE = 1"=40' / 1"=40'  
REFERENCE = SHEET