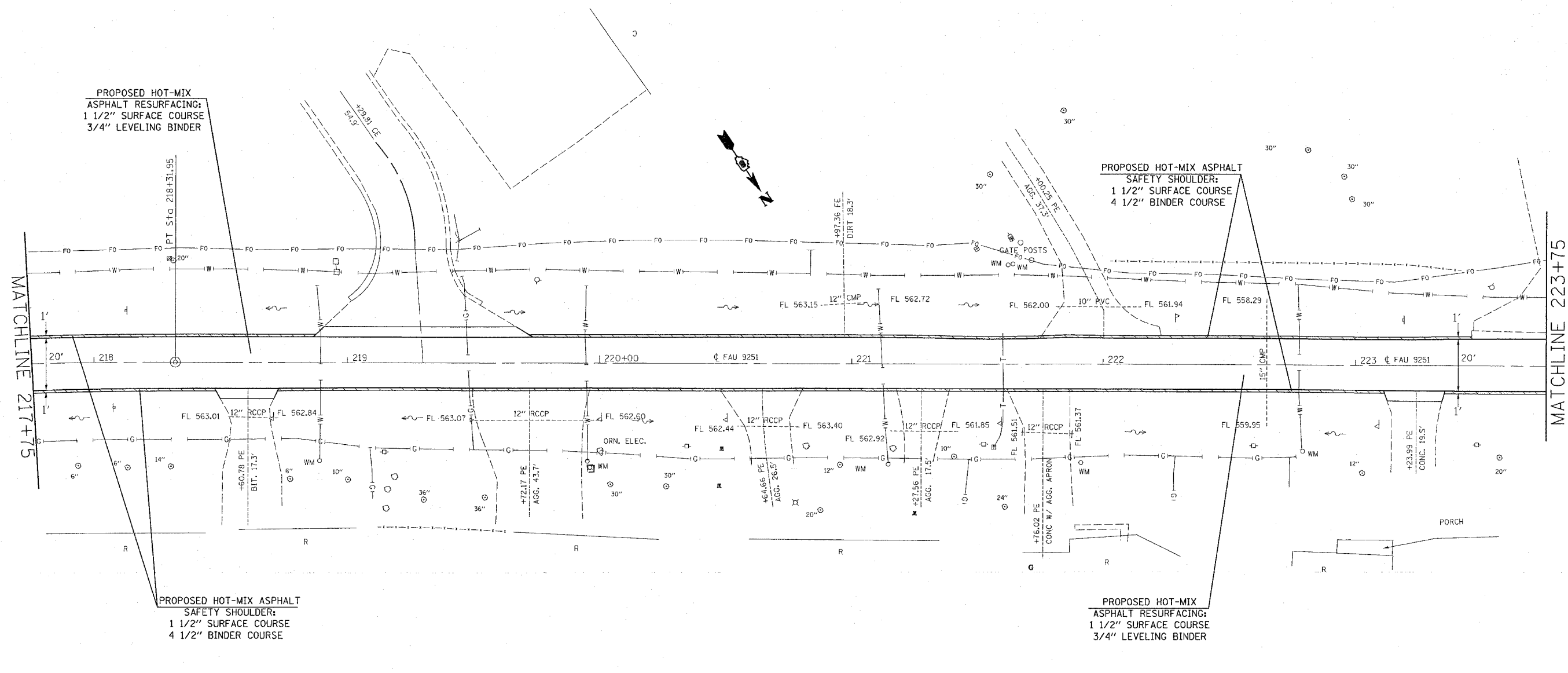


F.A.U. RTE.	SECTION	COUNTY	TOTAL SHEETS	SHEET NO.
9251	28-3RS-1	ST CLAIR	21	9
STA. 217+75		TO STA. 223+75		
FED. ROAD DIST. NO.	ILLINOIS	FED. AID PROJECT		



EARTH EXCAVATION (FOR PLACEMENT OF SAFETY SHOULDER)

PLOT DATE = 3/13/2007
 FILE NAME = c:\p\c\secta\868687\plan\p1a86867a.dgn
 PLOT SCALE = 20.0000' / IN.
 REFERENCE = #REF#

REVISIONS	
NAME	DATE

ILLINOIS DEPARTMENT OF TRANSPORTATION
PLAN VIEW
 FAU 9251
 SECTION 28-3RS-1
 ST CLAIR COUNTY

SCALE: VERT. / HORIZ.
 DATE: / /

DRAWN BY: / /
 CHECKED BY: / /