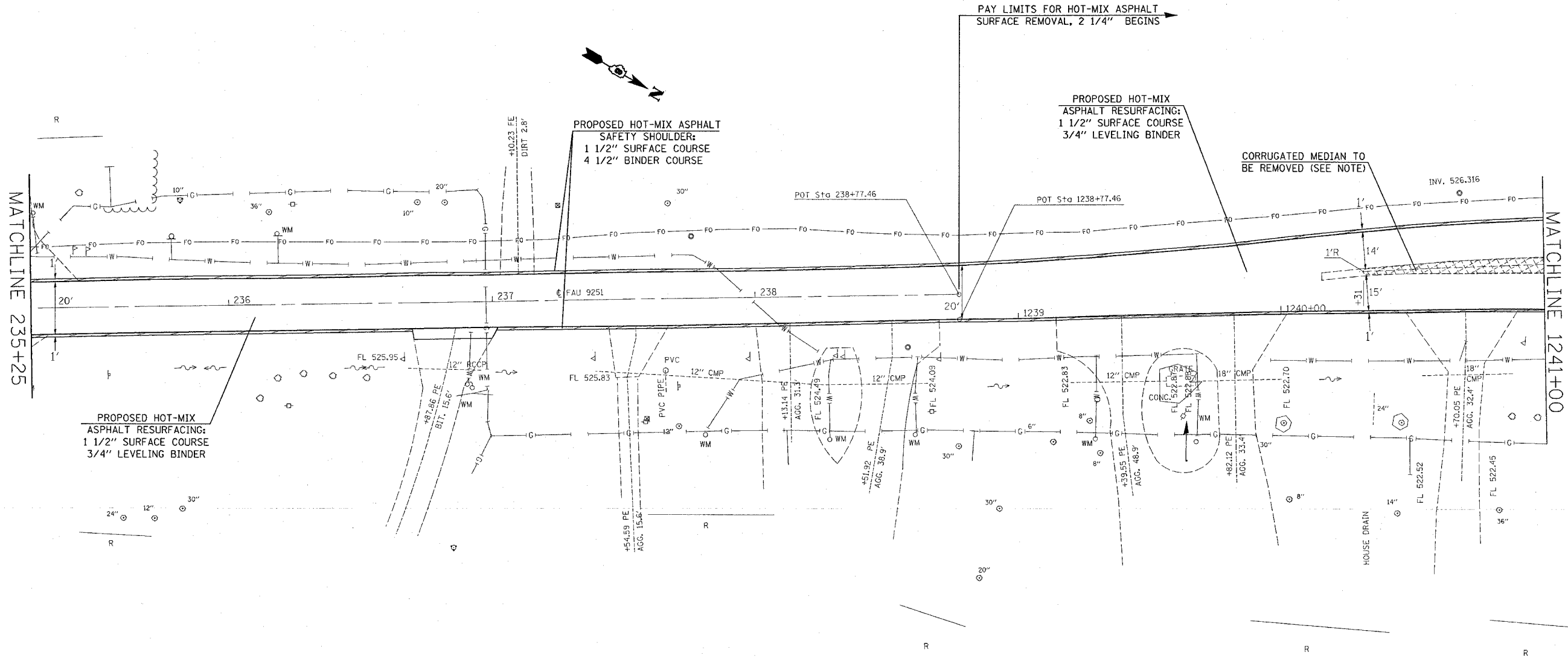


F.A.U. RTE.	SECTION	COUNTY	TOTAL SHEETS	SHEET NO.
9251	28-3RS-1	ST CLAIR	21	12
STA. 235+25		TO STA. 1241+00		
FED. ROAD DIST. NO.	ILLINOIS	FED. AID PROJECT		

NOTE:

MILLING OF THE EXISTING PCC CORRUGATED MEDIAN WILL BE PAID FOR AS HOT-MIX ASPHALT SURFACE REMOVAL 2 1/4".



EARTH EXCAVATION (FOR PLACEMENT OF SAFETY SHOULDER)



CORRUGATED MEDIAN TO BE MILLED AND RESURFACED WITH THE ADJACENT PAVEMENT

REVISIONS	
NAME	DATE

ILLINOIS DEPARTMENT OF TRANSPORTATION  
**PLAN VIEW**  
 FAU 9251  
 SECTION 28-3RS-1  
 ST CLAIR COUNTY

SCALE: VERT.  
 DATE:      HORIZ.

DRAWN BY  
 CHECKED BY