

F.A.U. RTE.	SECTION	COUNTY	TOTAL SHEETS	SHEET NO.
9251	28-3RS-1	ST CLAIR	21	1

STATE OF ILLINOIS
DEPARTMENT OF TRANSPORTATION
DIVISION OF HIGHWAYS

**PROPOSED
HIGHWAY PLANS**

FAU ROUTE 9251 (IL 13)
SECTION 28-3RS-1
PROJECT : M-9251(009)
ST. CLAIR COUNTY
RESURFACING
C-98-071-07

INDEX OF SHEETS

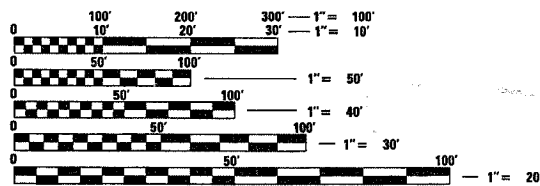
1. COVER SHEET
2. GENERAL NOTES & STANDARDS
3. SUMMARY OF QUANTITIES
4. TYPICAL SECTIONS
5. SCHEDULES
6. RESURFACING DETAILS
- 7.-13. PLAN VIEW
14. DETECTOR LOOP REPLACEMENT
- 15.-21. PAVEMENT MARKING PLAN

D-98-066-07



PROJECT ENGINEER: PATTI LEBEAU (618) 346-3179
SQUAD LEADER: CHERYL KEPLAR (618) 346-3186

MICROFILMED _____
REEL NUMBER _____
AWARDED _____
RESIDENT ENGINEER _____
AS BUILT CHANGES WERE MADE
ON THE FOLLOWING SHEETS

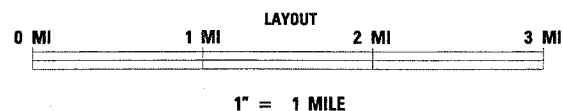
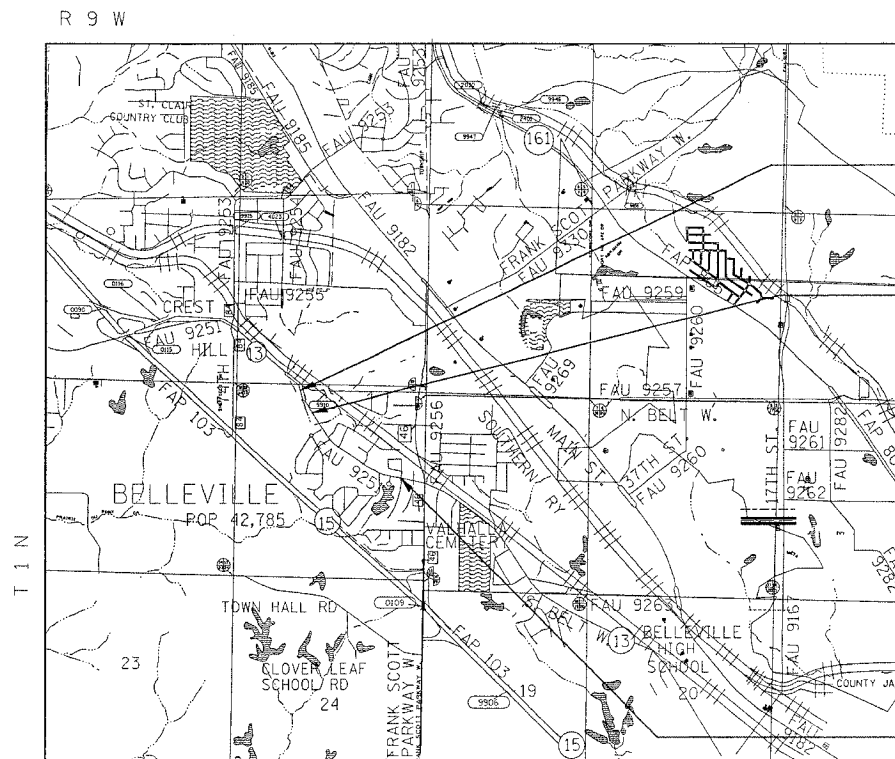


FULL SIZE PLANS HAVE BEEN PREPARED USING STANDARD ENGINEERING SCALES. REDUCED SIZED PLANS WILL NOT CONFORM TO STANDARD SCALES. IN MAKING MEASUREMENTS ON REDUCED PLANS, THE ABOVE SCALES MAY BE USED.

J.U.L.I.E.
JOINT UTILITY LOCATION INFORMATION FOR EXCAVATION
1-800-892-0123



ADT
2005 4200
2027 5200
SU% 4.2
MU% 1.2



END OF PROJECT
STA. 1244 + 66.41
LAT 38.54164
LONG -90.04779

STATION EQUATION
STA. 1238 + 77.46 AHEAD
= 238 + 77.46 BACK
(OFFSET = 9.375')

BEGINNING OF PROJECT
STA. 206 + 68.00
LAT 38.53533
LONG -90.03830

DESIGN DESIGNATION
URBAN MINOR ARTERIAL

GROSS LENGTH = 3,798.41 FT. (0.719 MILES)
NET LENGTH = 3,798.41 FT. (0.719 MILES)

STATE OF ILLINOIS
DEPARTMENT OF TRANSPORTATION
DIVISION OF HIGHWAYS

SUBMITTED March 22, 2007

Mary C. Ramis
DEPUTY DIRECTOR OF HIGHWAYS
REGION FIVE ENGINEER

May 11, 2007
Eric E. Harn
ENGINEER OF DESIGN AND ENVIRONMENT

May 11, 2007
Miller R. Sew
DIRECTOR, DIVISION OF HIGHWAYS

**PRINTED BY THE AUTHORITY
OF THE STATE OF ILLINOIS**

CONTRACT NO. 76A94

F.A.U. RTE.	SECTION	COUNTY	TOTAL SHEETS	SHEET NO.
9251	28-3RS-1	ST. CLAIR	21	2

GENERAL NOTES

1. THE STANDARDS AND REVISION NUMBERS LISTED SHALL APPLY TO THIS PROJECT.

2. ILLINOIS STATE LAW REQUIRES A 48-HOUR NOTICE BE GIVEN TO UTILITIES BEFORE DIGGING. FIELD MARKING OF FACILITIES MAY BE OBTAINED BY CONTACTING J.U.L.I.E. OR FOR NON-MEMBERS, THE UTILITY COMPANY DIRECTLY. AGENCIES KNOWN TO HAVE FACILITIES WITHIN THE PROJECT AREA ARE AS FOLLOWS:

- 360NETWORKS (USA) INC.
- AT&T ILLINOIS
- AMEREN IP
- CHARTER COMMUNICATIONS, INC.
- ILLINOIS AMERICAN WATER COMPANY
- LEVEL 3 COMMUNICATIONS, LLC
- MCLEOD USA TELECOMMUNICATIONS, INC.
- ST. CLAIR TOWNSHIP
- STOOKEY TOWNSHIP
- VERIZON BUSINESS

(MEMBERS OF J.U.L.I.E. (800) 892-0123 ARE INDICATED BY *. NON-J.U.L.I.E. MEMBERS MUST BE NOTIFIED INDIVIDUALLY.)

3. WHERE SECTION OR SUB-SECTION MONUMENTS ARE ENCOUNTERED THE ENGINEER SHALL BE NOTIFIED BEFORE SUCH MONUMENTS ARE REMOVED. THE CONTRACTOR SHALL PROTECT AND CAREFULLY PRESERVE ALL PROPERTY MARKERS AND MONUMENTS UNTIL THE OWNER, AN AUTHORIZED SURVEYOR, OR AGENT HAS WITNESSED OR OTHERWISE REFERENCED THE LOCATION.

4. THE CONTRACTOR SHALL VERIFY ALL DIMENSIONS AND CONDITIONS IN THE FIELD PRIOR TO CONSTRUCTION AND ORDERING OF MATERIALS.

5. SHORT TERM PAVEMENT MARKING SHALL BE APPLIED TO THE MILLED, PRIMED, BINDER COURSE AND FINAL SURFACE COURSE. ONLY THE REMOVAL OF THE FINAL SURFACE APPLICATION WILL BE PAID FOR (WORK ZONE PAVEMENT MARKING REMOVAL - SQ. FT), AN AMOUNT OF TEMPORARY PAVEMENT MARKING WHICH EQUALS THE AMOUNT OF PERMANENT PAVEMENT MARKING HAS ALSO BEEN ADDED TO THE PLANS.

6. THE FOLLOWING MIXTURE REQUIREMENTS ARE APPLICABLE FOR THIS PROJECT:

MIXTURE USE	SURFACE	LEVEL BINDER	BINDER
AC/PG	PG 64-22	PG 64-22	PG 64-22
RAP % (MAX)	10%	10%	15%
DESIGN AIR VOIDS	4.0% @ Ndes=70	4.0% @ Ndes=70	4.0% @ Ndes=70
MIX COMPOSITION (GRADATION MIXTURE)			IL 19.0
FRICITION AGG	MIXTURE "D"	MIXTURE "C"	MIXTURE "B"

MIXTURE USE	FULL DEPTH PATCHING
AC/PG	PG 64-22
RAP % (MAX)	15%
DESIGN AIR VOIDS	4.0% @ Ndes=70
MIX COMPOSITION (GRADATION MIXTURE)	
FRICITION AGG	MIXTURE "B"

PLAN QUANTITIES FOR HOT-MIX ASPHALT SURFACE COURSE ITEMS ARE CALCULATED USING A UNIT WEIGHT OF 112 LB/SQ YD/IN.

7. THE THICKNESS OF THE HOT-MIX ASPHALT SHOWN ON THE PLANS IS THE NOMINAL THICKNESS. DEVIATIONS FROM THE NOMINAL THICKNESS WILL BE PERMITTED WHEN SUCH DEVIATIONS OCCUR DUE TO IRREGULARITIES IN THE EXISTING SURFACE OR BASE ON WHICH THE HOT-MIX ASPHALT IS PLACED.

8. THE AVERAGE MILLING DEPTH WILL BE 1.5" EXCEPT FOR THE LAST 600' AT THE NORTH END WHICH WILL INCREASE TO 2.25". ACTUAL MILLING DEPTHS MAY VARY DEPENDING ON THE EXTENT OF THE CHANNELIZATION. IT IS ESTIMATED THAT 8,978 SQ. YDS. (831 TONS) OF HOT-MIX ASPHALT SURFACE WILL BE REMOVED. THE MILLINGS SHALL BE HAULED TO THE BELLEVILLE YARD. TOM SHANK SHALL BE CONTACTED AT (618) 235-1466 PRIOR TO DELIVERY TO MAKE ARRANGEMENTS.

9. FLAGMEN SHALL BE PRESENT DURING ALL CLOSURE HOURS INCLUDING LUNCH HOUR AND NO ADDITIONAL COMPENSATION SHALL BE ALLOWED.

10. 'ROAD CONSTRUCTION AHEAD' SIGNS SHALL BE PLACED AT THE BEGINNING OF THE PROJECT PLUS THE INTERSECTING SIDEROADS, AND WILL BE CONSIDERED INCLUDED IN THE TRAFFIC CONTROL PAY ITEMS. ALL CONSTRUCTION SIGNS SHALL BE FLUORESCENT ORANGE.

11. ANY EXCAVATION OR DROP-OFF MORE THAN 3" AT EDGE OF PAVEMENT SHALL BE PROTECTED WITH EXTENDED LEG BARRICADES AND APPROPRIATE LIGHTING.

12. A QUANTITY OF AGGREGATE FOR TEMPORARY ACCESS HAS BEEN ADDED TO THE PLANS TO ALLOW FOR TEMPORARY ACCESS TO ENTRANCES.

13. ALL TRAFFIC CONTROL DEVICES AS HEREIN SPECIFIED AND ANY ADDITIONAL TRAFFIC CONTROL DEVICES AND FLAGGERS AS DEEMED NECESSARY BY THE RESIDENT ENGINEER SHALL BE INCLUDED IN THE CONTRACT LUMP SUM PRICE FOR TRAFFIC CONTROL AND PROTECTION, STANDARD 701501.

ELECTRICAL NOTE

THE EXISTING DETECTOR LOOP CONDUIT FROM PAVEMENT TO THE HANDHOLE WILL BE REUSED FOR THE REPLACED LOOP. THE CONTRACTOR WILL BE RESPONSIBLE FOR PROTECTING THE EXISTING CONDUIT DURING CONSTRUCTION. SHOULD ANY DAMAGE TO THE CONDUIT OCCUR DUE TO THE OPERATIONS, REPAIR SHALL BE MADE TO THE SATISFACTION OF THE ENGINEER AND WILL BE DONE AT THE CONTRACTOR'S EXPENSE.

STANDARDS

- 442201-02
- 630001-07
- 630101-07
- 630301-04
- 635006-02
- 635011-01
- 701006-02
- 701011-01
- 701311-02
- 701501-03
- 702001-06
- 780001-01
- 781001-02
- 886001
- 886006
- 000001-04

PLOT DATE = 5/13/2007
 FILE NAME = C:\Users\1454866071\OneDrive\1454866071\In\REF
 PLOT SCALE = 48.57997 / IN
 REFERENCE = #REF

REVISIONS	
NAME	DATE

ILLINOIS DEPARTMENT OF TRANSPORTATION
GENERAL NOTES & STANDARDS
 FAU ROUTE 9251 (IL 13)
 SECTION 28-3RS-1
 ST. CLAIR COUNTY

SCALE: VERT.
 DATE: HORIZ.

DRAWN BY
 CHECKED BY

SUMMARY OF QUANTITIES

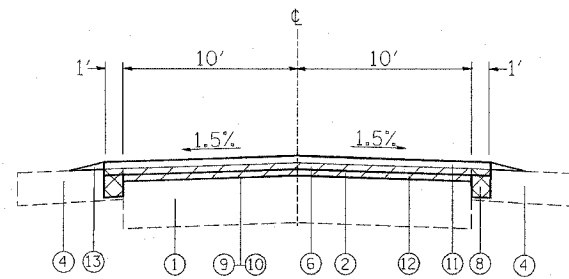
CONTRACT NO. 76A94				
F.A.U. RTE.	SECTION	COUNTY	TOTAL SHEETS	SHEET NO.
9251	28-3RS-1	ST. CLAIR	21	3
STA.		TO STA.		
FED. ROAD DIST. NO.		ILLINOIS	FED. AID PROJECT	

SUMMARY OF QUANTITIES			TOTAL QUANTITIES	CONSTRUCTION TYPE CODE		
CODE NO	ITEM	UNIT		1000 URBAN		
20200100	EARTH EXCAVATION	CU YD	94	94		
40201000	AGGREGATE FOR TEMPORARY ACCESS	TON	26	26		
40600200	BITUMINOUS MATERIALS (PRIME COAT)	TON	3	3		
40600300	AGGREGATE (PRIME COAT)	TON	13	13		
40600635	LEVELING BINDER (MACHINE METHOD), N70	TON	377	377		
40600990	TEMPORARY RAMP	SQ YD	36	36		
40603085	HOT-MIX ASPHALT BINDER COURSE, IL-19.0, N70	TON	158	158		
40603340	HOT-MIX ASPHALT SURFACE COURSE, MIX "D", N70	TON	835	835		
44000155	HOT-MIX ASPHALT SURFACE REMOVAL, 1 1/2"	SQ YD	7146	7146		
44000158	HOT-MIX ASPHALT SURFACE REMOVAL, 2 1/4"	SQ YD	1832	1832		
44200128	PAVEMENT PATCHING, TYPE I, 11 INCH	SQ YD	72	72		
44200132	PAVEMENT PATCHING, TYPE II, 11 INCH	SQ YD	49	49		
48102100	AGGREGATE WEDGE SHOULDER, TYPE B	TON	117	117		
* 63000000	STEEL PLATE BEAM GUARD RAIL, TYPE A	FOOT	12.5	12.5		
* 63100169	TRAFFIC BARRIER TERMINAL TYPE 1, SPECIAL (FLARED)	EACH	2	2		
63200310	GUARDRAIL REMOVAL	FOOT	50	50		
67000400	ENGINEER'S FIELD OFFICE, TYPE A	CAL MO	3	3		
67100100	MOBILIZATION	L SUM	1	1		
70102620	TRAFFIC CONTROL AND PROTECTION, STANDARD 701501	L SUM	1	1		
70103815	TRAFFIC CONTROL SURVEILLANCE	CAL DA	5	5		
70300100	SHORT-TERM PAVEMENT MARKING	FOOT	1248	1248		
70300220	TEMPORARY PAVEMENT MARKING - LINE 4"	FOOT	12570	12570		
70300260	TEMPORARY PAVEMENT MARKING - LINE 12"	FOOT	31	31		
70301000	WORK ZONE PAVEMENT MARKING REMOVAL	SQ FT	104	104		
* 78000200	THERMOPLASTIC PAVEMENT MARKING - LINE 4"	FOOT	12570	12570		
* 78000600	THERMOPLASTIC PAVEMENT MARKING - LINE 12"	FOOT	31	31		
* 78100100	RAISED REFLECTIVE PAVEMENT MARKER	EACH	51	51		
* 78200410	GUARDRAIL MARKERS, TYPE A	EACH	3	3		
* 78201000	TERMINAL MARKER - DIRECT APPLIED	EACH	2	2		
78300200	RAISED REFLECTIVE PAVEMENT MARKER REMOVAL	EACH	43	43		
* 80300100	LOCATING UNDERGROUND CABLE	FOOT	15	15		
* 88600600	DETECTOR LOOP REPLACEMENT	FOOT	35	35		

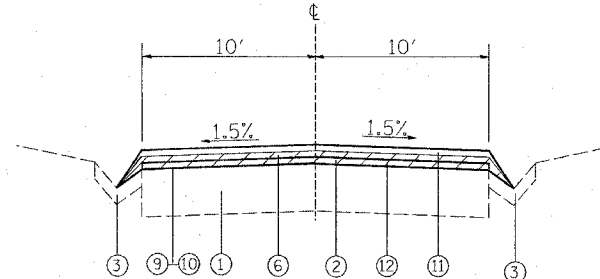
SUMMARY OF QUANTITIES			TOTAL QUANTITIES	CONSTRUCTION TYPE CODE		
CODE NO	ITEM	UNIT		1000 URBAN		

X SPECIALTY ITEMS

F.A.U. RTE.	SECTION	COUNTY	TOTAL SHEETS	SHEET NO.
9251	28-3RS-1	ST. CLAIR	21	4
STA.		TO STA.		
FED. ROAD DIST. NO.	ILLINOIS	FED. AID PROJECT		



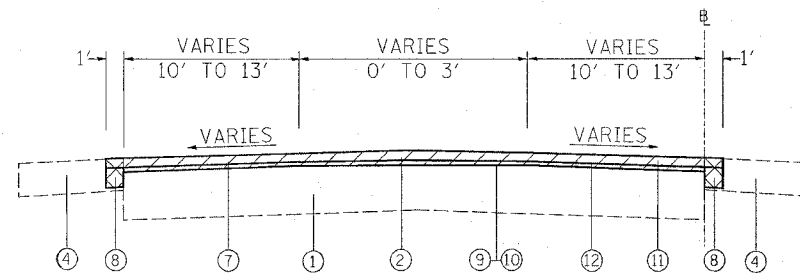
STA. 206+68.00 TO STA. 223+45.90 LT.
 STA. 206+68.00 TO STA. 226+41.43 RT.
 STA. 228+53.52 TO STA. 238+77.46 LT.
 STA. 232+40.00 TO STA. 238+77.46 RT.



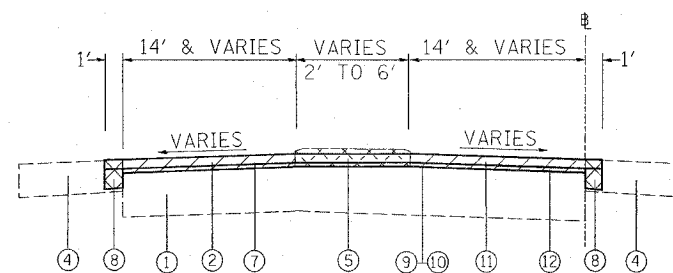
STA. 223+45.90 TO STA. 228+53.52 LT.
 STA. 226+41.43 TO STA. 232+40 RT.

LEGEND

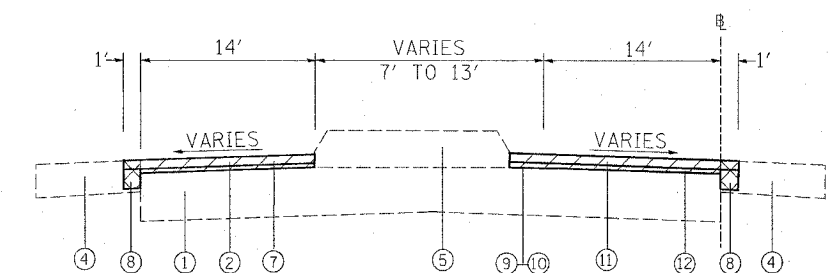
- ① EXISTING PORTLAND CEMENT CONCRETE PAVEMENT 9"
- ② EXISTING HOT-MIX ASPHALT SURFACE COURSE
- ③ EXISTING TYPE A GUTTER
- ④ EXISTING AGGREGATE SHOULDER
- ⑤ EXISTING MEDIAN
- ⑥ PROPOSED HOT-MIX ASPHALT SURFACE REMOVAL 1 1/2"
- ⑦ PROPOSED HOT-MIX ASPHALT SURFACE REMOVAL 2 1/4"
- ⑧ PROPOSED HOT-MIX ASPHALT BINDER COURSE, IL-19.0, N70 - 4 1/2"
- ⑨ PROPOSED BITUMINOUS MATERIAL (PRIME COAT)
- ⑩ PROPOSED AGGREGATE (PRIME COAT)
- ⑪ PROPOSED HOT-MIX ASPHALT SURFACE COURSE, MIX "D", N-70 - 1 1/2 "
- ⑫ PROPOSED LEVELING BINDER (MACHINE METHOD), N-70 - 3/4"
- ⑬ PROPOSED AGGREGATE WEDGE SHOULDER, TYPE B



STA. 1238+77.46 TO STA. 1240+31



STA. 1240+31 TO STA. 1241+10.23



STA. 1241+10.23 TO STA. 1244+66.41

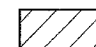

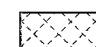
NOTES:

THE ACTUAL MILLING WIDTH MAY VARY IN AREAS SUCH AS WHERE GUTTERS AND CULVERTS EXIST AND WILL BE MODIFIED AS DIRECTED BY THE RESIDENT ENGINEER.

MILLING OF THE EXISTING PCC CORRUGATED MEDIAN WILL BE PAID FOR AS HOT-MIX ASPHALT SURFACE REMOVAL 2 1/4".

MATCH SUPERELEVATIONS WITH EXISTING PAVEMENT.

1' SAFETY SHOULDERS SHALL CONSIST OF 4 1/2" HOT-MIX ASPHALT BINDER COURSE AND 1 1/2" HOT-MIX ASPHALT SURFACE COURSE.

-  HOT-MIX ASPHALT SURFACE REMOVAL
-  EARTH EXCAVATION (FOR PLACEMENT OF SAFETY SHOULDER)
-  CORRUGATED MEDIAN TO BE MILLED AND RESURFACED WITH THE ADJACENT PAVEMENT

REVISIONS	
NAME	DATE

ILLINOIS DEPARTMENT OF TRANSPORTATION
TYPICAL SECTIONS
 FAU ROUTE 9251 (IL 13)
 SECTION 28-3RS-1
 ST. CLAIR COUNTY

SCALE: VERT. DATE
 HORIZ. DATE
 DRAWN BY
 CHECKED BY

F.A.U. RTE.	SECTION	COUNTY	TOTAL SHEETS	SHEET NO.
9251	28-3RS-1	ST. CLAIR	21	5
STA. TO STA.				
FED. ROAD DIST. NO.			ILLINOIS FED. AID PROJECT	

RESURFACING SCHEDULE

LOCATION	HMA SURFACE REMOVAL 1 1/2" (SQ YD)	HMA SURFACE REMOVAL 2 1/4" (SQ YD)	BITUMINOUS MATERIALS PRIME COAT (TON)	AGGREGATE MATERIALS PRIME COAT (TON)	HMA BINDER CSE IL-19.0, N70 4 1/2" (TON)	LEVELING BINDER IMM N70 3/4" (TON)	HMA SURF CSE MIX "D", N70 1 1/2" (TON)	AGGREGATE WEDGE SHOULDER TYPE B (TON)
STA 206+68 TO 207+23	138		0.1	0.2		5.8	11.6	
STA 207+23 TO 212+25	1116		0.3	1.7	22.9	46.9	105.3	17.0
STA 212+25 TO 217+18	1096		0.3	1.6	25.4	46.0	103.5	18.9
STA 217+18 TO 225+40	1827		0.6	2.7	35.7	76.7	173.3	26.6
STA 225+40 TO 232+32	1538		0.5	2.3	8.3	64.6	141.9	6.1
STA 232+32 TO 238+77	1433		0.4	2.2	33.6	60.2	134.6	25.0
STA 1238+77 TO 1241+10		725	0.2	1.1	13.0	30.4	65.7	9.7
STA 1241+10 TO 1244+66		1108	0.3	1.7	17.9	46.5	99.0	13.3
STA 1244+66 TO GUTTER					0.9		0.3	0.7
TOTALS	7,146	1,832	3	13	158	377	835	117

NOTE: THE QUANTITIES FOR AGGREGATE WEDGE SHOULDER, TYPE B INCLUDE EXCESS TO INSURE SMOOTH TRANSITIONS AT AGGREGATE ENTRANCES AND OTHER LOCATIONS AS DIRECTED BY THE RESIDENT ENGINEER.

PAVEMENT PATCHING SCHEDULE

LOCATION	SIDE	LENGTH (FT)	WIDTH (FT)	TYPE I (SQ YDS)	TYPE II (SQ YDS)
STA. 216+38	LT	8	10		8.9
STA. 216+38	RT	8	10		8.9
STA. 217+44	LT	4	10	4.4	
STA. 217+44	RT	4	10	4.4	
STA. 222+72	LT	4	10	4.4	
STA. 222+72	RT	4	10	4.4	
STA. 225+36	RT	8	10		8.9
STA. 228+00	LT	4	10	4.4	
STA. 228+00	RT	4	10	4.4	
STA. 230+64	LT	4	10	4.4	
STA. 230+64	RT	4	10	4.4	
STA. 232+22	LT	4	10	4.4	
STA. 232+22	RT	4	10	4.4	
STA. 232+75	LT	4	10	4.4	
STA. 232+75	RT	4	10	4.4	
STA. 238+56	LT	4	10	4.4	
STA. 1240+67	LT	4	14		6.2
STA. 1241+20	LT	4	14		6.2
ANTICIPATED FAILURES				14	10
TOTALS				72	49

PAVEMENT MARKING SCHEDULE

LOCATION	SKIP-DASH YELLOW 4" (FT)	SOLID YELLOW 4" (FT)		SOLID WHITE 4" (FT)	SOLID YELLOW 4" (FT)	DOUBLE YELLOW 4" (FT)	DIAGONAL YELLOW 12" (FT)	RAISED REFLECTIVE PAVEMENT MARKERS (EACH)	
	CENTERLINE	NO PASSING ZONE		EDGELINES	MEDIAN	MEDIAN	MEDIAN	ONE-WAY	TWO-WAY
		LT	RT						
STA. 206+68 TO 207+09				82		164	2	2	
STA. 207+09 TO 212+26	129	517		886					6
STA. 212+26 TO 216+32	102			776					5
STA. 216+32 TO 226+41	252		1009	1877					13
STA. 226+41 TO 230+58		417	417	733					5
STA. 230+58 TO 234+68	103	410		734					5
STA. 234+68 TO 236+85		217		434					3
STA. 236+85 TO 238+77	48		192	384					2
STA. 1238+77 TO 1239+83	27		106	212					1
STA. 1239+83 TO 1241+10				254		508	29	7	
STA. 1241+10 TO 1244+66				712	620			1	
STA. 1244+66 TO GUTTER				32					
SUBTOTALS	660	1561	1941	7116	620	672	31	10	41
TOTALS				12570			31		51

REVISIONS	
NAME	DATE

ILLINOIS DEPARTMENT OF TRANSPORTATION

SCHEDULES

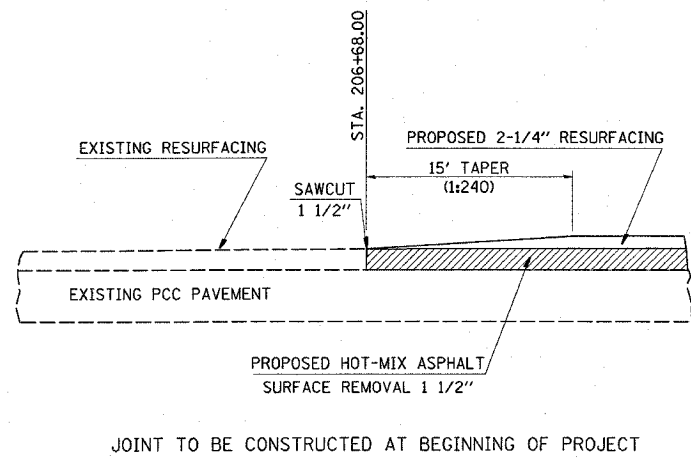
FAU ROUTE 9251 (IL 13)
SECTION 28-3RS-1
ST. CLAIR COUNTY

SCALE: VERT. DATE
 HORIZ.

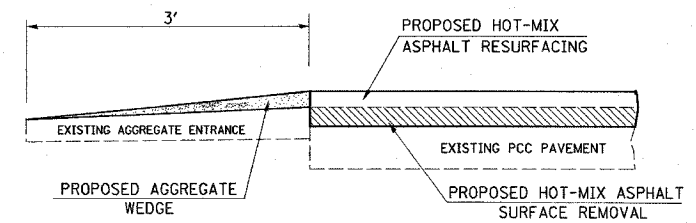
DRAWN BY
CHECKED BY

PLOT DATE = 2/12/2007
FILE NAME = c:\paw\9251\9251-28-3RS-1.dgn
PLOT SCALE = 51.8808" / IN.
REFERENCE = #REF#

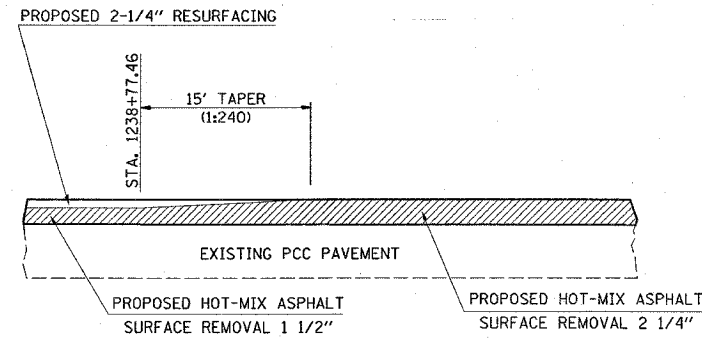
F.A.U. RTE.	SECTION	COUNTY	TOTAL SHEETS	SHEET NO.
9251	28-3RS-1	ST. CLAIR	21	6
STA.		TO STA.		
FED. ROAD DIST. NO.	ILLINOIS	FED. AID PROJECT		



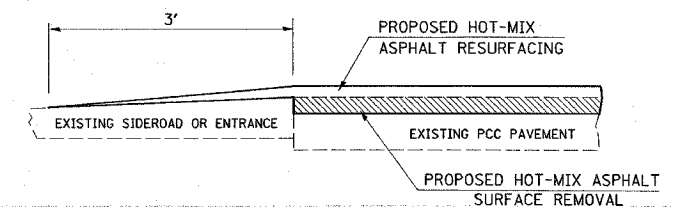
JOINT TO BE CONSTRUCTED AT BEGINNING OF PROJECT



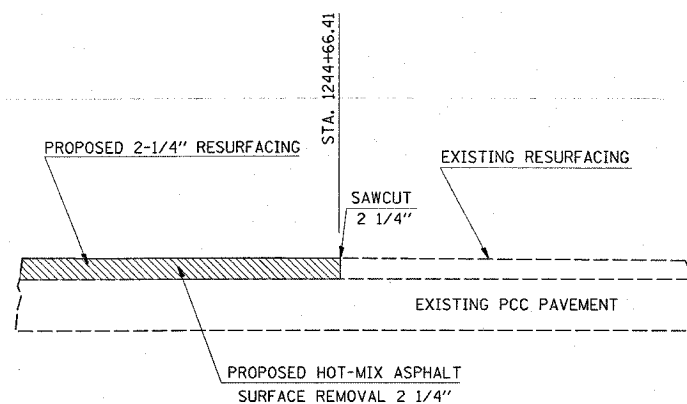
FEATHEREDGE DETAIL FOR AGGREGATE ENTRANCES



TRANSITION AT STA. 1238+77.46



FEATHEREDGE DETAIL FOR OIL AND CHIP, HOT-MIX ASPHALT, AND CONCRETE ENTRANCES AND SIDEROADS



JOINT TO BE CONSTRUCTED AT END OF PROJECT

NOTE:

ALL SAWCUTS AND MILLING DEPTH TRANSITIONS SHALL BE INCLUDED IN THE COST OF THE HOT-MIX ASPHALT SURFACE REMOVAL PAY ITEMS.

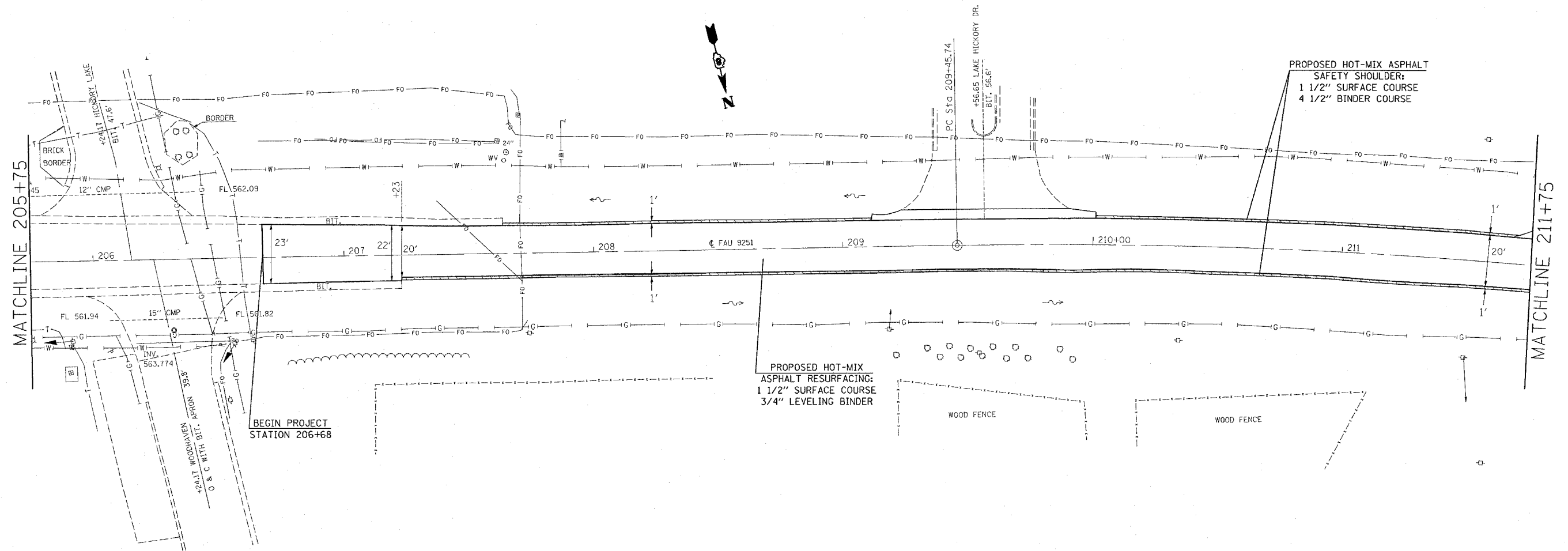
PLOT DATE = 3/13/2007
 FILE NAME = c:\p\projects\aed06837\plan\pl-066507.dgn
 PLOT SCALE = 45,9999 / IN.
 REFERENCE = REF#

REVISIONS	
NAME	DATE

ILLINOIS DEPARTMENT OF TRANSPORTATION
RESURFACING DETAILS
 FAU ROUTE 9251 (IL 13)
 SECTION 28-3RS-1
 ST. CLAIR COUNTY

SCALE: VERT. _____
 HORIZ. _____
 DATE _____ DRAWN BY _____
 CHECKED BY _____

F.A.U. RTE.	SECTION	COUNTY	TOTAL SHEETS	SHEET NO.
9251	28-3RS-1	ST CLAIR	21	7
STA. 205+75		TO STA. 211+75		
FED. ROAD DIST. NO.	ILLINOIS	FED. AID PROJECT		



EARTH EXCAVATION (FOR PLACEMENT OF SAFETY SHOULDER)

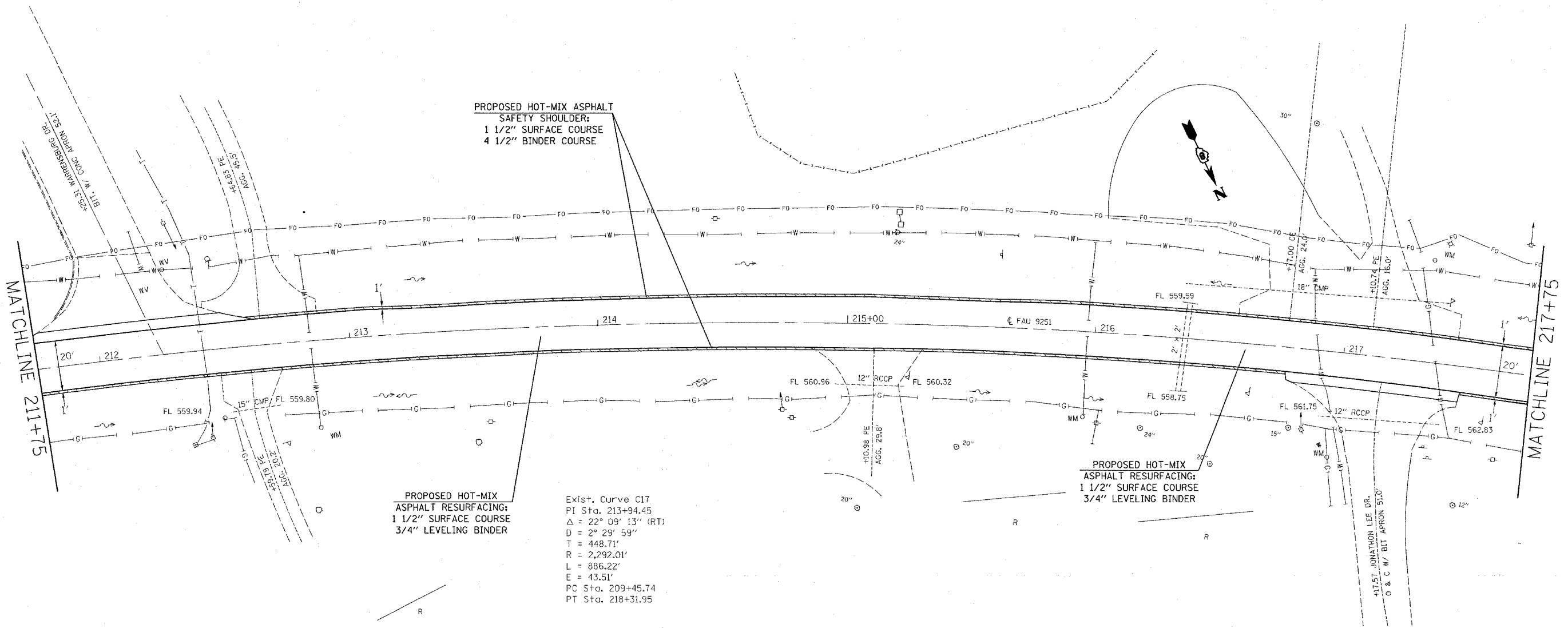
REVISIONS	
NAME	DATE

ILLINOIS DEPARTMENT OF TRANSPORTATION
PLAN VIEW
 FAU 9251
 SECTION 28-3RS-1
 ST CLAIR COUNTY

SCALE: VERT. DATE HORIZ. DATE
 DRAWN BY CHECKED BY

PLOT DATE = 3/13/2007
 FILE NAME = c:\p\proj\mets\and66607\plan\plan066607.dgn
 SCALE = 28800 / IN.
 REFERENCE = SHEET

F.A.U. RTE.	SECTION	COUNTY	TOTAL SHEETS	SHEET NO.
9251	28-3RS-1	ST. CLAIR	21	8
STA. 211+75		TO STA. 217+75		
FED. ROAD DIST. NO.		ILLINOIS		FED. AID PROJECT



PROPOSED HOT-MIX ASPHALT
SAFETY SHOULDER:
1 1/2" SURFACE COURSE
4 1/2" BINDER COURSE

PROPOSED HOT-MIX
ASPHALT RESURFACING:
1 1/2" SURFACE COURSE
3/4" LEVELING BINDER

Exist. Curve C17
PI Sta. 213+94.45
 $\Delta = 22^\circ 09' 13''$ (RT)
 $D = 2^\circ 29' 59''$
 $T = 448.71'$
 $R = 2,292.01'$
 $L = 886.22'$
 $E = 43.51'$
PC Sta. 209+45.74
PT Sta. 218+31.95

PROPOSED HOT-MIX
ASPHALT RESURFACING:
1 1/2" SURFACE COURSE
3/4" LEVELING BINDER



EARTH EXCAVATION (FOR PLACEMENT OF SAFETY SHOULDER)

PLOT DATE = 3/13/2007
FILE NAME = c:\paw\meca\ed\906807\plan\p106807a.dgn
PLOT DATE = 3/13/2007
PLOT TIME = 08:50:30
REFERENCE = SHEET

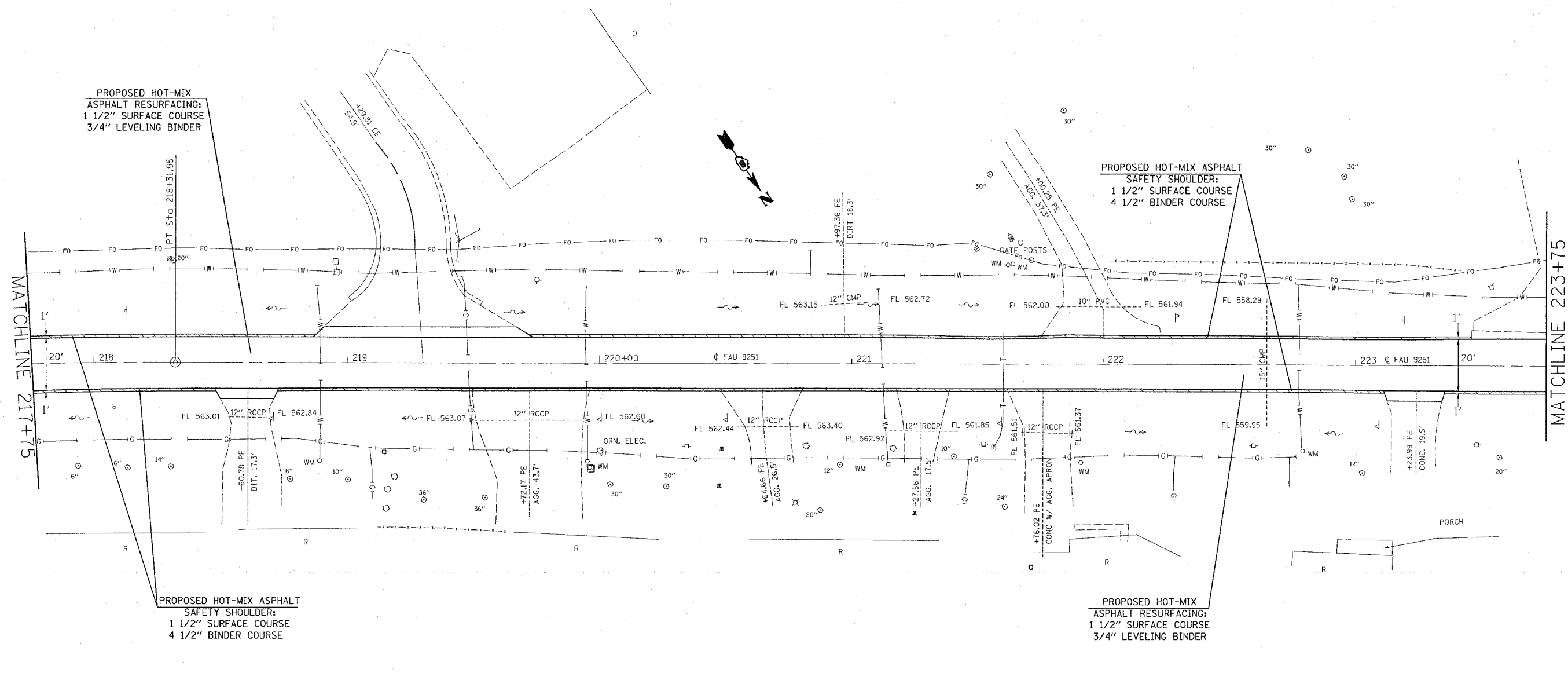
REVISIONS	
NAME	DATE

ILLINOIS DEPARTMENT OF TRANSPORTATION
PLAN VIEW
FAU 9251
SECTION 28-3RS-1
ST. CLAIR COUNTY

SCALE: VERT. 1"=40'
HORIZ. 1"=40'

DATE: _____ DRAWN BY: _____
CHECKED BY: _____

F.A.U. RTE.	SECTION	COUNTY	TOTAL SHEETS	SHEET NO.
9251	28-3RS-1	ST CLAIR	21	9
STA. 217+75		TO STA. 223+75		
FED. ROAD DIST. NO.	ILLINOIS	FED. AID PROJECT		



PROPOSED HOT-MIX ASPHALT RESURFACING:
1 1/2" SURFACE COURSE
3/4" LEVELING BINDER

PROPOSED HOT-MIX ASPHALT SAFETY SHOULDER:
1 1/2" SURFACE COURSE
4 1/2" BINDER COURSE

PROPOSED HOT-MIX ASPHALT SAFETY SHOULDER:
1 1/2" SURFACE COURSE
4 1/2" BINDER COURSE

PROPOSED HOT-MIX ASPHALT RESURFACING:
1 1/2" SURFACE COURSE
3/4" LEVELING BINDER

MATCHLINE 217+75

MATCHLINE 223+75



EARTH EXCAVATION (FOR PLACEMENT OF SAFETY SHOULDER)

PLOT DATE = 3/13/2007
FILE NAME = c:\p\c\secta\868687\plan\p1a86867a.dgn
PLOT SCALE = 20.0000' / IN.
REFERENCE = #REF#

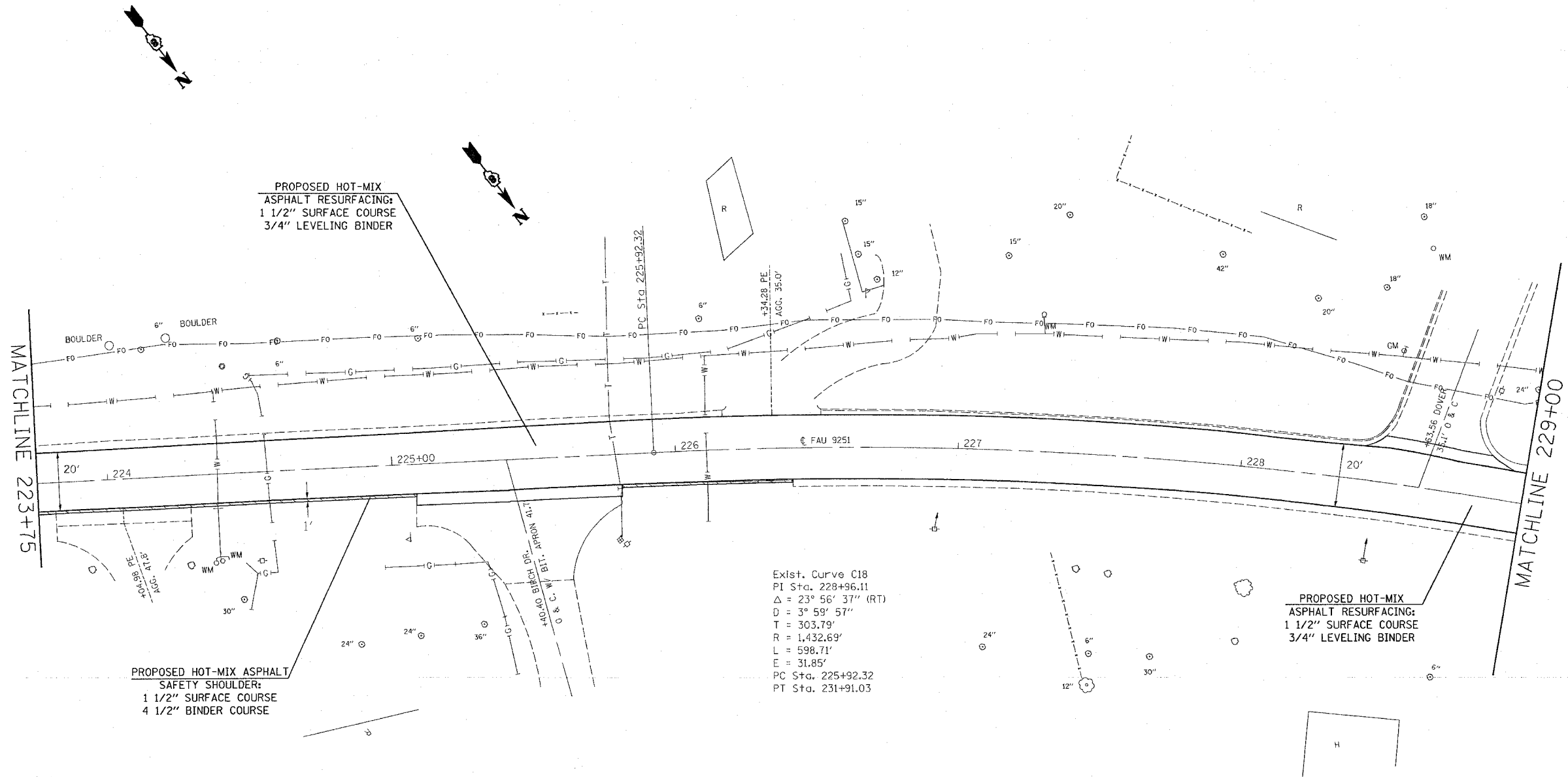
REVISIONS	
NAME	DATE


ILLINOIS DEPARTMENT OF TRANSPORTATION
PLAN VIEW
FAU 9251
SECTION 28-3RS-1
ST CLAIR COUNTY

SCALE: VERT. _____
HORIZ. _____
DATE _____

DRAWN BY _____
CHECKED BY _____

F.A.U. RTE.	SECTION	COUNTY	TOTAL SHEETS	SHEET NO.
9251	28-3RS-1	ST CLAIR	21	10
STA. 223+75		TO STA. 229+00		
FED. ROAD DIST. NO.	ILLINOIS	FED. AID PROJECT		



 EARTH EXCAVATION (FOR PLACEMENT OF SAFETY SHOULDER)

PLOT DATE = 3/13/2007
 PLOT SCALE = 1" = 40'
 PLOT REFERENCE = REF 1

REVISIONS	
NAME	DATE

ILLINOIS DEPARTMENT OF TRANSPORTATION
PLAN VIEW
 FAU 9251
 SECTION 28-3RS-1
 ST CLAIR COUNTY

SCALE: VERT. _____
 HORIZ. _____

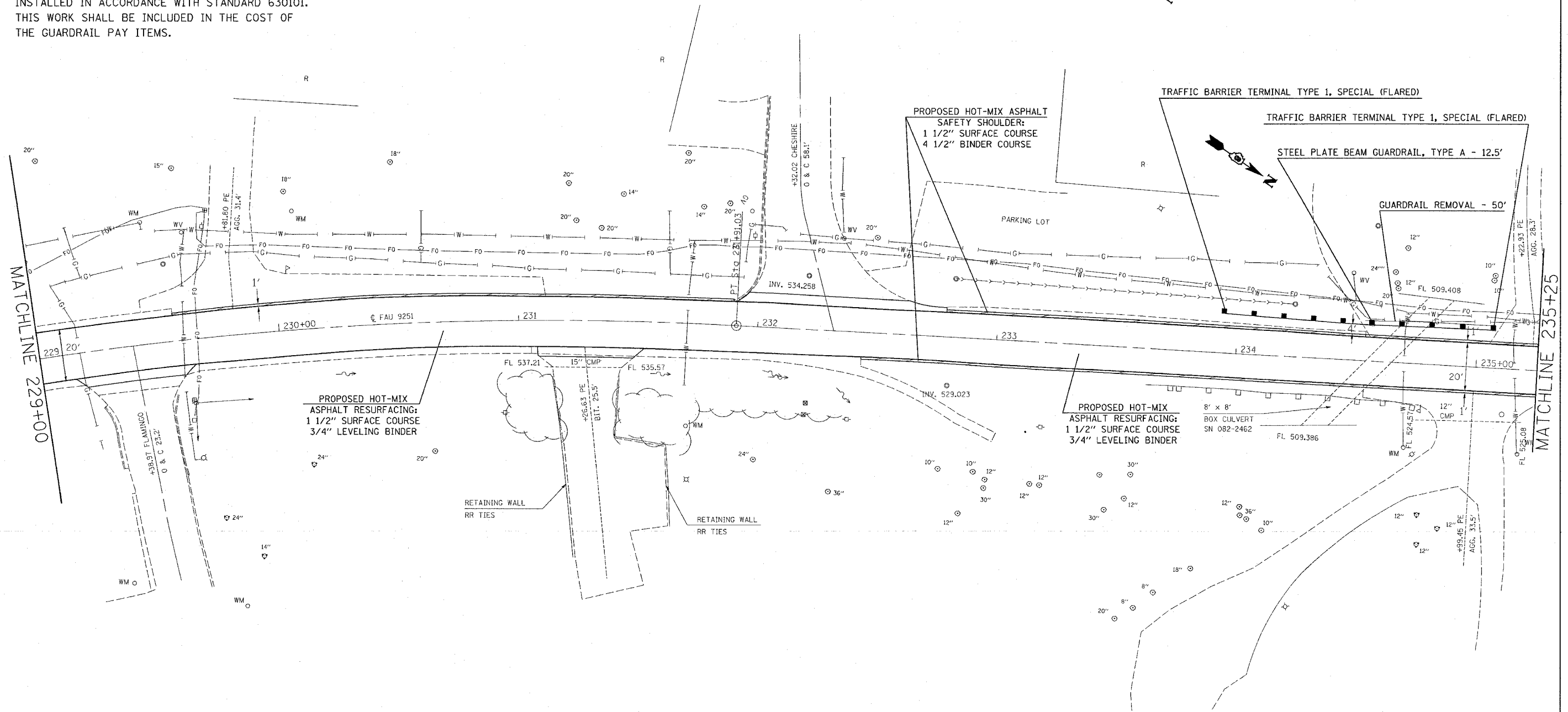
DATE _____ DRAWN BY _____
 CHECKED BY _____


F.A.U. RTE.	SECTION	COUNTY	TOTAL SHEETS	SHEET NO.
9251	28-3RS-1	ST CLAIR	21	11
STA. 229+00		TO STA. 235+25		
FED. ROAD DIST. NO.	ILLINOIS	FED. AID PROJECT		

NOTES:

THE PROPOSED GUARDRAIL SHALL BE ERECTED 4' FROM THE PROPOSED SAFETY SHOULDER.

SHOULD THE EXISTING BOX CULVERT OBSTRUCT INSTALLATION OF THE PROPOSED GUARDRAIL, THE PORTION OF GUARDRAIL AFFECTED SHALL BE INSTALLED IN ACCORDANCE WITH STANDARD 630101. THIS WORK SHALL BE INCLUDED IN THE COST OF THE GUARDRAIL PAY ITEMS.



 EARTH EXCAVATION (FOR PLACEMENT OF SAFETY SHOULDER)

REVISIONS	
NAME	DATE

ILLINOIS DEPARTMENT OF TRANSPORTATION
PLAN VIEW
 FAU 9251
 SECTION 28-3RS-1
 ST CLAIR COUNTY

SCALE: VERT. _____
 HORIZ. _____
 DATE _____

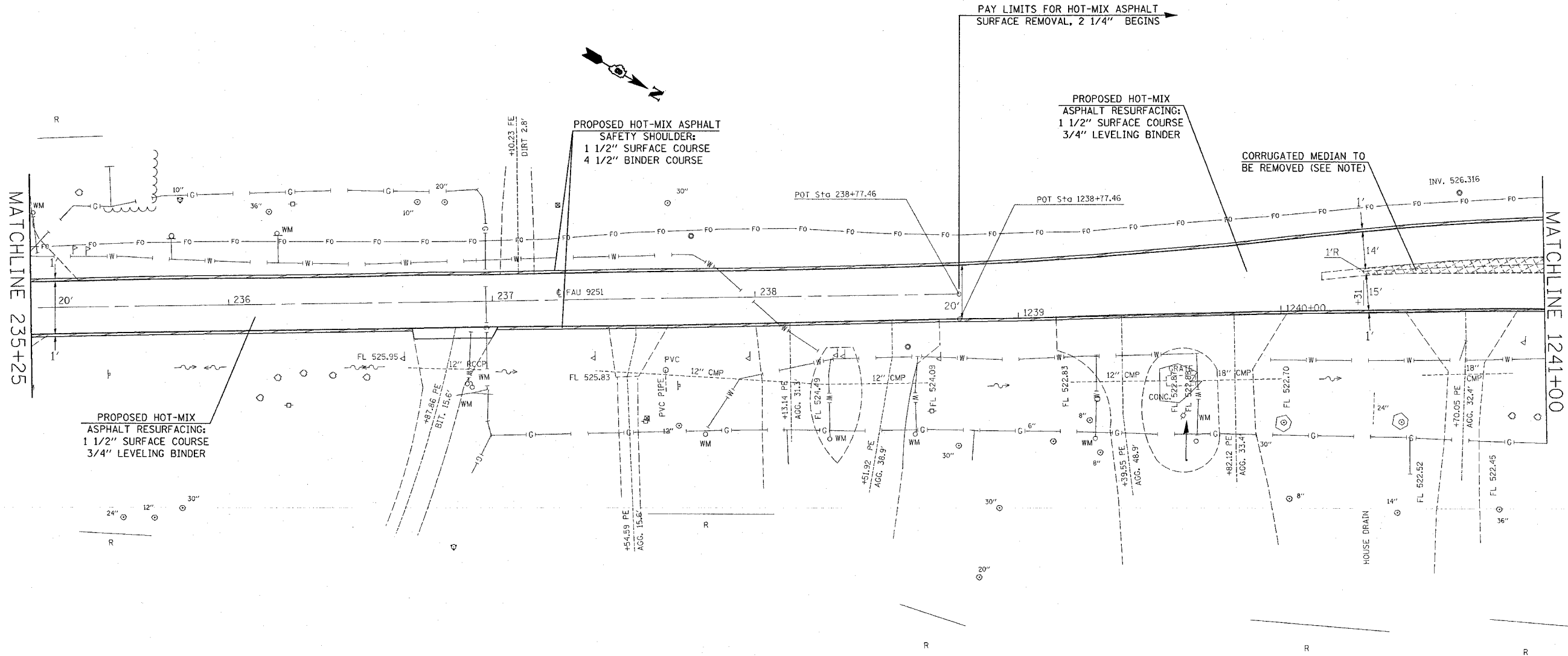
DRAWN BY _____
 CHECKED BY _____

PLOT DATE = 3/13/2007
 FILE NAME = c:\pms\jess\w\86807\plan\plan066807.dgn
 PLOT SCALE = 1" = 40'
 REFERENCE = REF

F.A.U. RTE.	SECTION	COUNTY	TOTAL SHEETS	SHEET NO.
9251	28-3RS-1	ST CLAIR	21	12
STA. 235+25		TO STA. 1241+00		
FED. ROAD DIST. NO.	ILLINOIS	FED. AID PROJECT		

NOTE:

MILLING OF THE EXISTING PCC CORRUGATED MEDIAN WILL BE PAID FOR AS HOT-MIX ASPHALT SURFACE REMOVAL 2 1/4".



EARTH EXCAVATION (FOR PLACEMENT OF SAFETY SHOULDER)



CORRUGATED MEDIAN TO BE MILLED AND RESURFACED WITH THE ADJACENT PAVEMENT

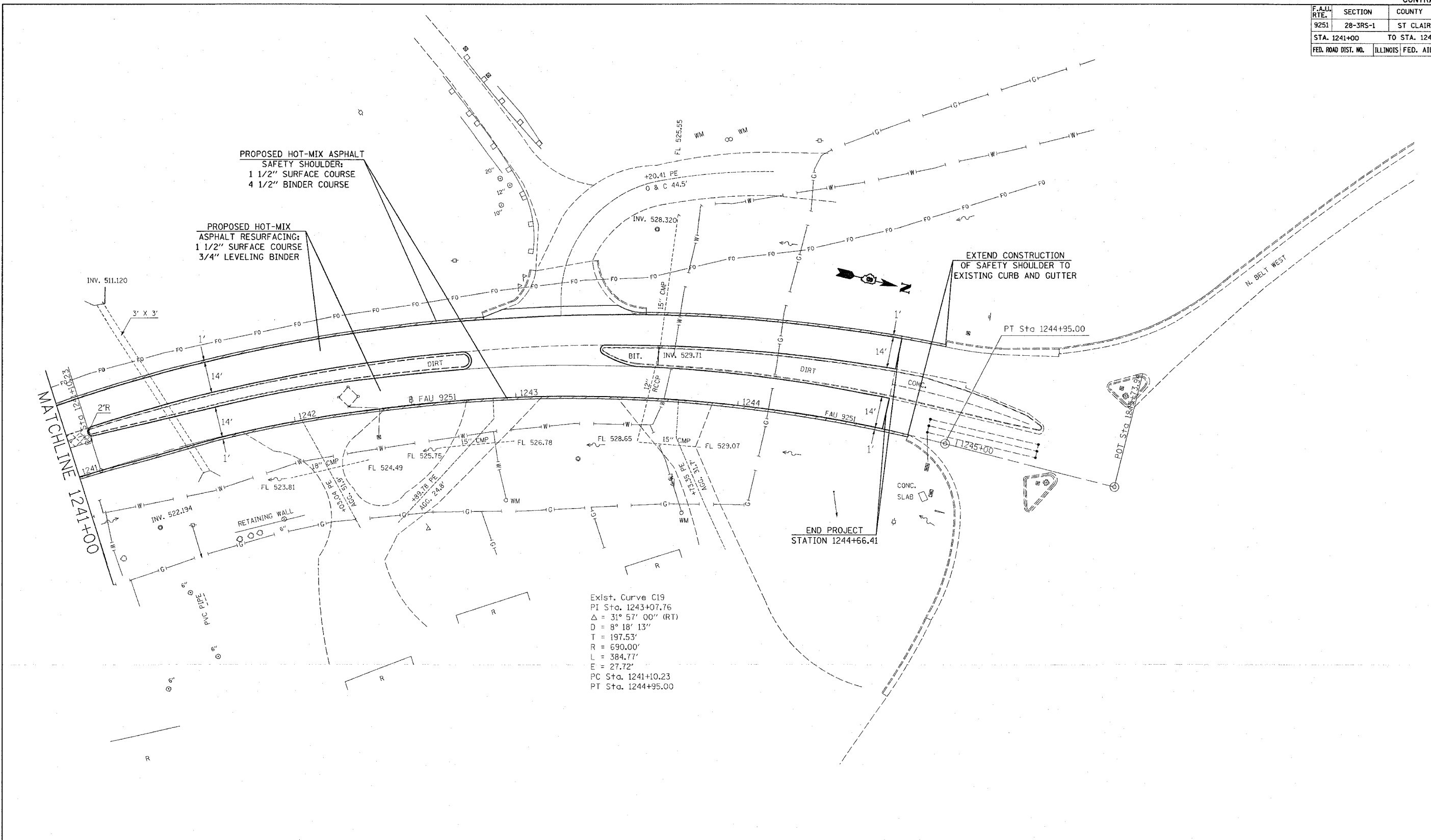
REVISIONS	
NAME	DATE

ILLINOIS DEPARTMENT OF TRANSPORTATION
PLAN VIEW
 FAU 9251
 SECTION 28-3RS-1
 ST CLAIR COUNTY

SCALE: VERT.
 DATE: HORIZ.

DRAWN BY
 CHECKED BY

F.A.U. RTE.	SECTION	COUNTY	TOTAL SHEETS	SHEET NO.
9251	28-3RS-1	ST CLAIR	21	13
STA. 1241+00		TO STA. 1245+73.9		
FED. ROAD DIST. NO.		ILLINOIS FED. AID PROJECT		



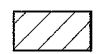
PROPOSED HOT-MIX ASPHALT
SAFETY SHOULDER:
1 1/2" SURFACE COURSE
4 1/2" BINDER COURSE

PROPOSED HOT-MIX
ASPHALT RESURFACING:
1 1/2" SURFACE COURSE
3/4" LEVELING BINDER

EXTEND CONSTRUCTION
OF SAFETY SHOULDER TO
EXISTING CURB AND GUTTER

END PROJECT
STATION 1244+66.41

Exist. Curve C19
PI Sta. 1243+07.76
 $\Delta = 31^\circ 57' 00''$ (RT)
D = 8' 18' 13"
T = 197.53'
R = 690.00'
L = 384.77'
E = 27.72'
PC Sta. 1241+10.23
PT Sta. 1244+95.00

 EARTH EXCAVATION (FOR PLACEMENT OF SAFETY SHOULDER)

REVISIONS	
NAME	DATE

ILLINOIS DEPARTMENT OF TRANSPORTATION
PLAN VIEW
FAU 9251
SECTION 28-3RS-1
ST CLAIR COUNTY

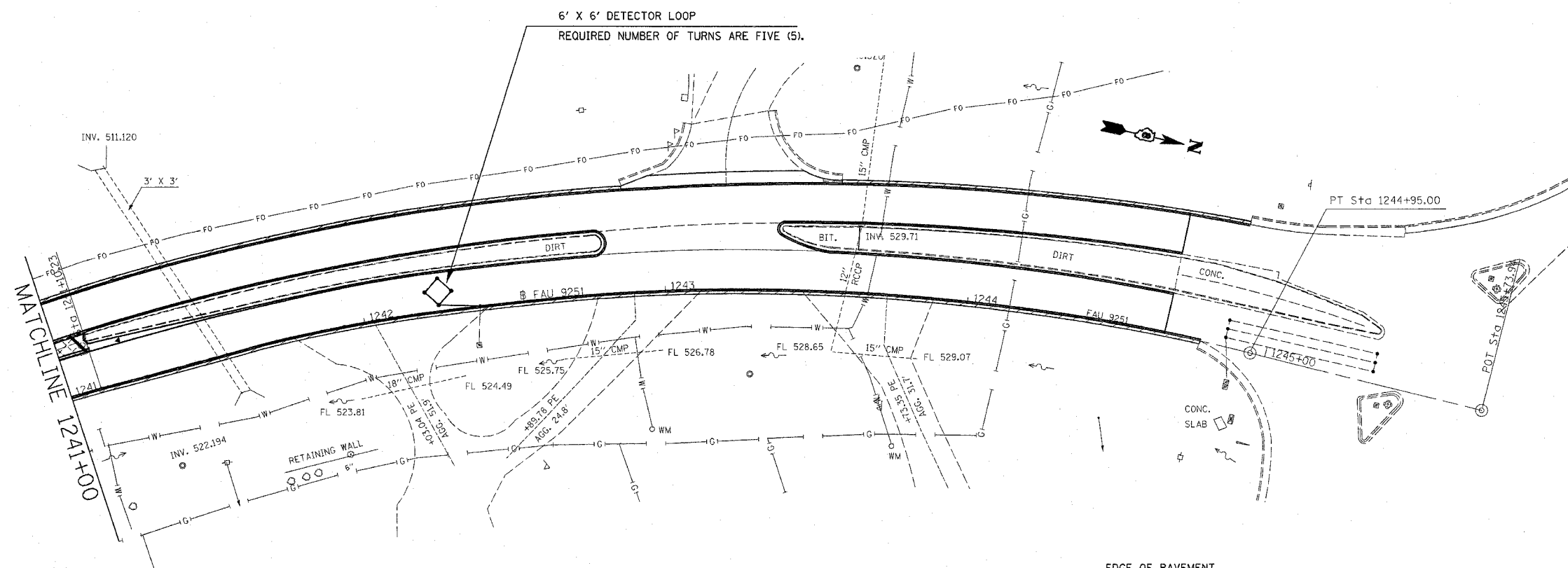
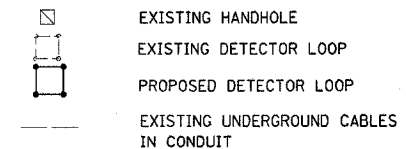
SCALE: VERT. _____
HORIZ. _____

DATE _____ DRAWN BY _____
CHECKED BY _____

PLOT DATE = 3/13/2007
FILE NAME = c:\projects\ed8587\plan\plan065697.dgn
PLOT SCALE = 28.0000 / IN.
REFERENCE = #REF#

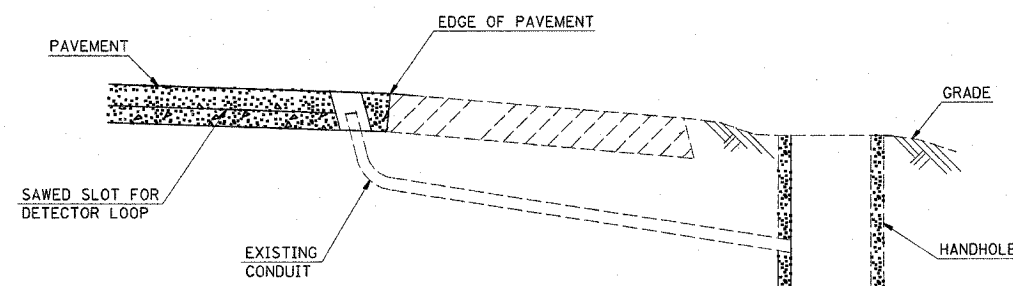
CONTRACT NO. 76A94				
F.A.U. RTE.	SECTION	COUNTY	TOTAL SHEETS	SHEET NO.
9251	28-3RS-1	ST. CLAIR	21	14
STA. 1241+00		TO STA. 1245+73.9		
FED. ROAD DIST. NO. ILLINOIS FED. AID PROJECT				

TRAFFIC SIGNALS LEGEND



SCHEDULE OF QUANTITIES

DESCRIPTION OF PAY ITEM	UNIT	QUANTITY
LOCATING UNDERGROUND CABLE	FOOT	15
DETECTOR LOOP REPLACEMENT	FOOT	35



DETAIL

(NO SCALE)

RE-USE EXISTING DETECTOR LOOP LEAD-IN CONDUIT

- 1 DRILL OUT PAVEMENT SEALANT AND CLEAN EXISTING CONDUIT.
- 2 REMOVE EXISTING CABLE TO HANDHOLE.
- 3 INSTALL LOOP LEAD-IN CONDUCTORS IN CONDUIT.
- 4 SPLICE NEW DETECTOR LOOP LEAD-IN CONDUCTORS TO EXISTING LEAD-IN CABLE IN HANDHOLE.
- 5 FILL HOLE WITH APPROVED SEALER. PREVENT SEALER FROM ENTERING INTO CONDUIT.
- 6 LOCATING UNDERGROUND CABLE WILL BE PAID FOR SEPERATELY.

NOT A PAY ITEM. THE COST OF THIS WORK SHALL BE INCLUDED IN THE PAY ITEM "DETECTOR LOOP REPLACEMENT"

REVISIONS	
NAME	DATE

ILLINOIS DEPARTMENT OF TRANSPORTATION
PLAN VIEW
 DETECTOR LOOP REPLACEMENT
 FAU 9251
 SECTION 28-3RS-1
 ST CLAIR COUNTY

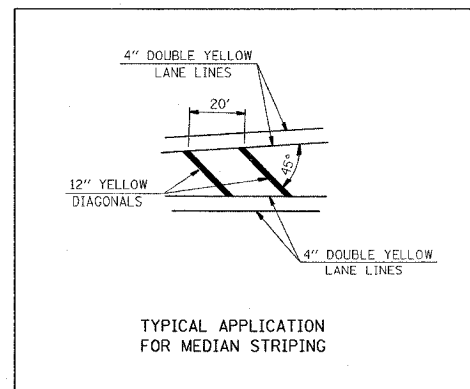
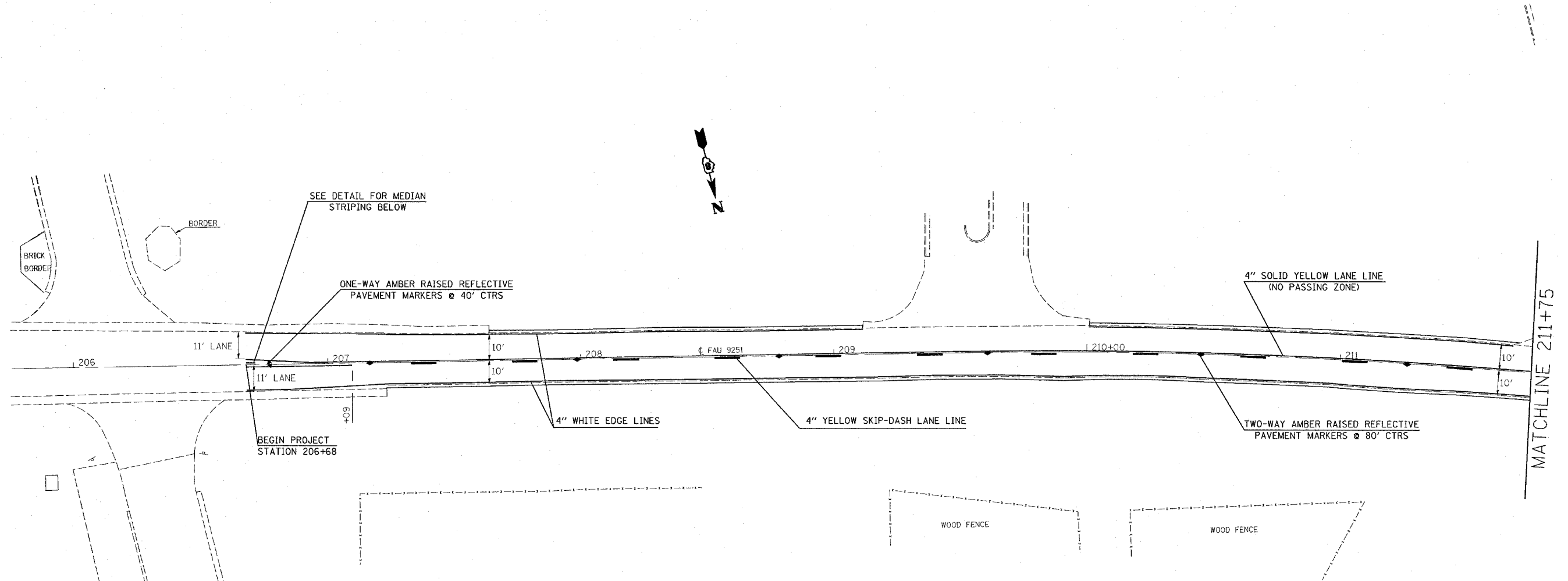
SCALE: VERT. _____
 HORIZ. _____
 DATE _____ DRAWN BY _____
 CHECKED BY _____

PLOT DATE = 3/13/2007
 FILE NAME = c:\projects\new\86587\electrical\sp1d86587.dgn
 PLOT SCALE = 28.3RS-1 / IN.
 REFERENCE = REF#

F.A.U. RTE.	SECTION	COUNTY	TOTAL SHEETS	SHEET NO.
9251	28-3RS-1	ST CLAIR	21	15
STA. 205+75		TO STA. 211+75		
FED. ROAD DIST. NO.	ILLINOIS	FED. AID PROJECT		

NOTE:

ALL PAVEMENT MARKINGS SHALL BE IN ACCORDANCE WITH STANDARD 780001 UNLESS SHOWN OTHERWISE.



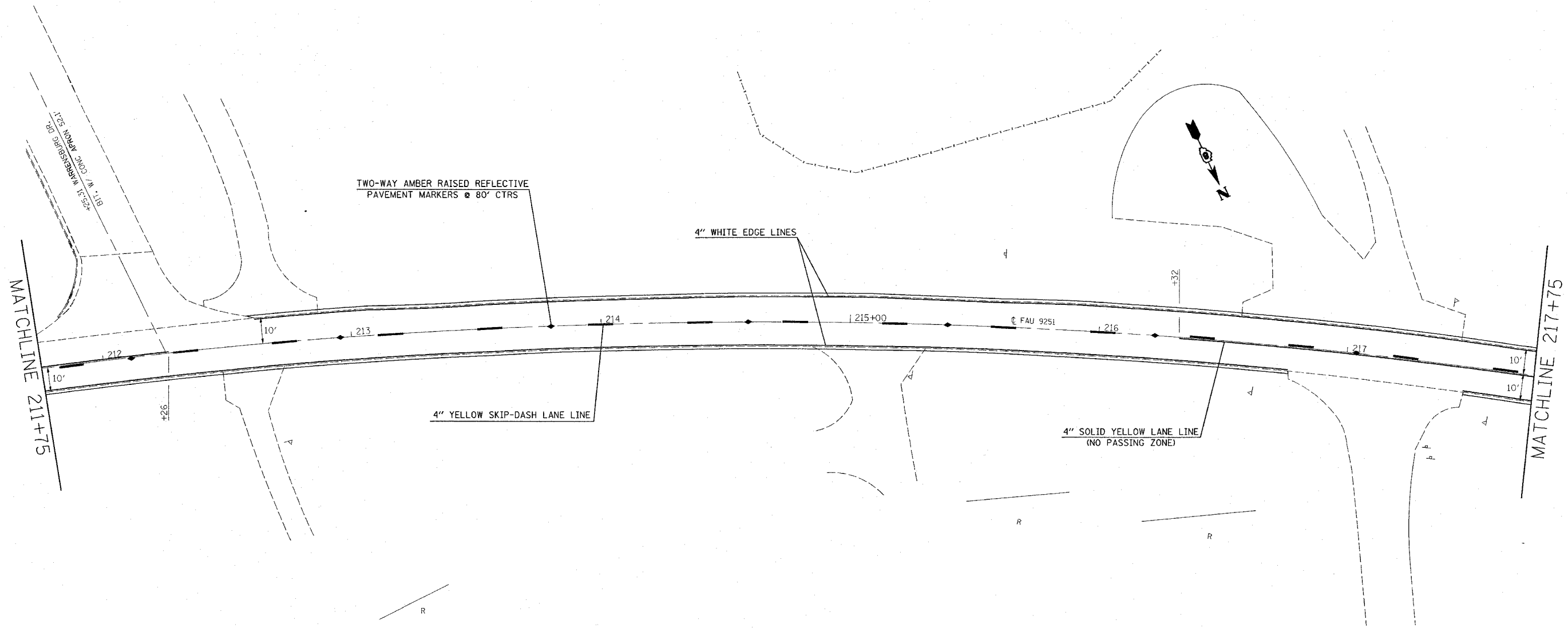
REVISIONS	
NAME	DATE

ILLINOIS DEPARTMENT OF TRANSPORTATION
PAVEMENT MARKING PLAN
 FAU 9251
 SECTION 28-3RS-1
 ST CLAIR COUNTY

SCALE: VERT. _____
 HORIZ. _____
 DATE _____
 DRAWN BY _____
 CHECKED BY _____

PLOT DATE = 3/13/2007
 PLOT SCALE = 1" = 20'
 PLOT SCALE = 1" = 20'
 REFERENCE = REF#

F.A.J. RTE.	SECTION	COUNTY	TOTAL SHEETS	SHEET NO.
9251	28-3RS-1	ST CLAIR	21	16
STA. 211+75		TO STA. 217+75		
FED. ROAD DIST. NO.	ILLINOIS	FED. AID PROJECT		



PLOT DATE = 3/13/2007
 FILE NAME = c:\p\projects\ad\9251\plan\pml\9251.dgn
 PLOT SCALE = 28.0000' / 1" / IN.
 REFERENCE = SHEET #

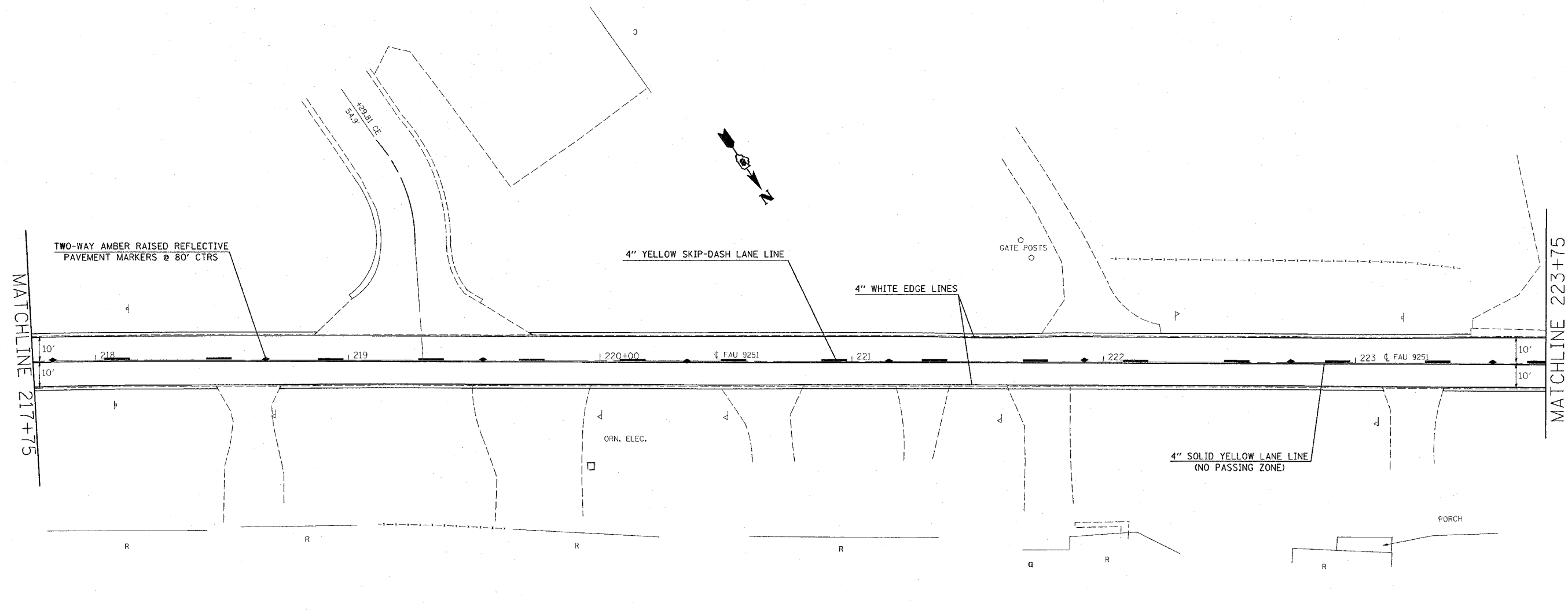
REVISIONS	
NAME	DATE

ILLINOIS DEPARTMENT OF TRANSPORTATION
PAVEMENT MARKING PLAN
 FAU 9251
 SECTION 28-3RS-1
 ST CLAIR COUNTY

SCALE: VERT. _____
 HORIZ. _____
 DATE _____

DRAWN BY _____
 CHECKED BY _____

F.A.U. RTE.	SECTION	COUNTY	TOTAL SHEETS	SHEET NO.
9251	28-3RS-1	ST CLAIR	21	17
STA. 217+75		TO STA. 223+75		
FED. ROAD DIST. NO.		ILLINOIS	FED. AID PROJECT	



MATCHLINE 217+75

MATCHLINE 223+75

TWO-WAY AMBER RAISED REFLECTIVE PAVEMENT MARKERS @ 80' CTRS

4" YELLOW SKIP-DASH LANE LINE

4" WHITE EDGE LINES

GATE POSTS

ORN. ELEC.

4" SOLID YELLOW LANE LINE (NO PASSING ZONE)

PORCH

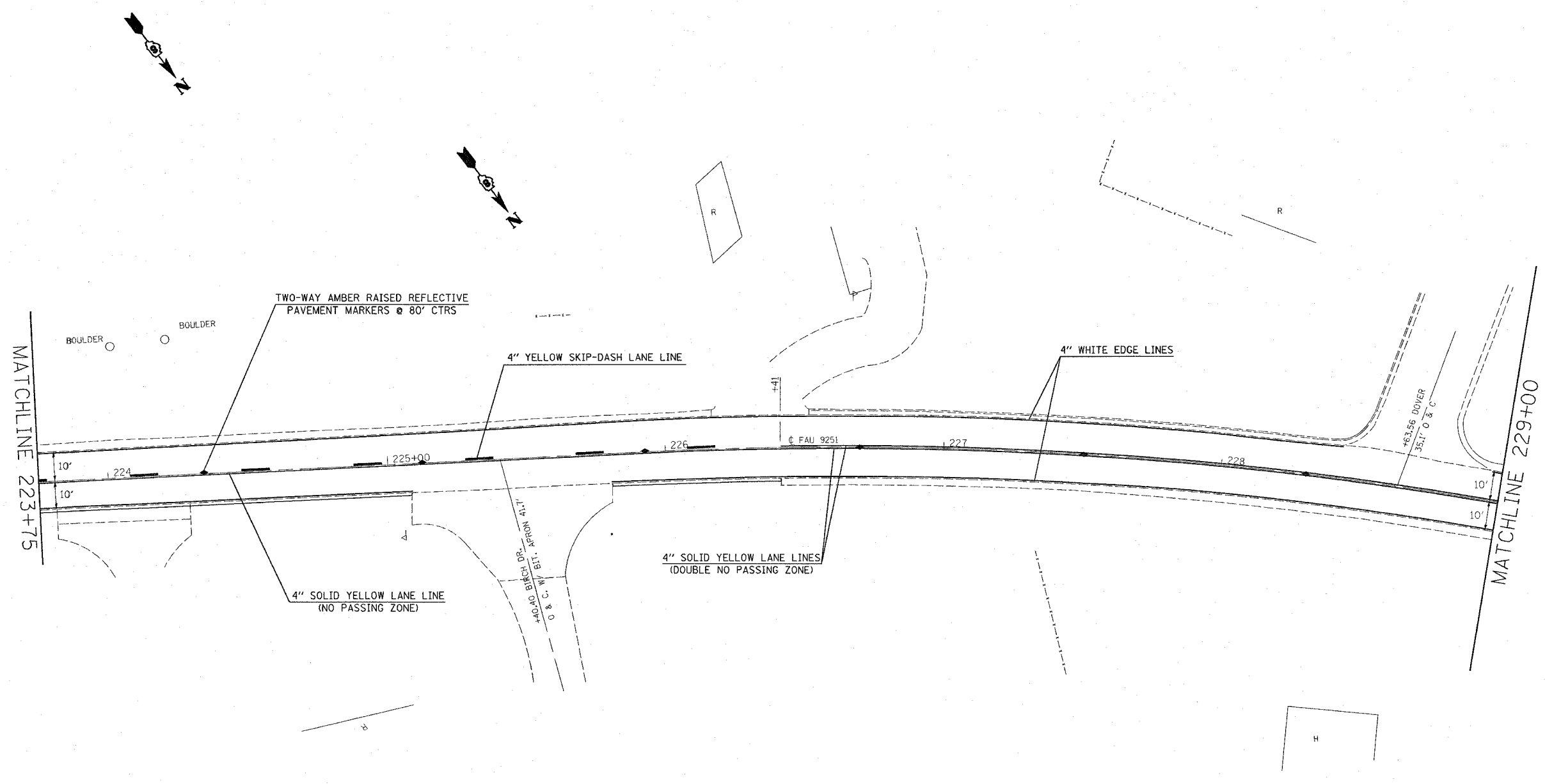
PLOT DATE = 3/13/2007
 FILE NAME = c:\pvc\pcta\ed06607\plan\pca06607.dgn
 PLOT SCALE = 28.0000" / IN.
 REFERENCE = REF#

REVISIONS	
NAME	DATE

ILLINOIS DEPARTMENT OF TRANSPORTATION
PAVEMENT MARKING PLAN
 FAU 9251
 SECTION 28-3RS-1
 ST CLAIR COUNTY

SCALE: VERT. _____
 HORIZ. _____
 DATE _____ DRAWN BY _____
 CHECKED BY _____

F.A.U. RTE.	SECTION	COUNTY	TOTAL SHEETS	SHEET NO.
9251	28-3RS-1	ST CLAIR	21	18
STA. 223+75		TO STA. 229+00		
FED. ROAD DIST. NO.		ILLINOIS	FED. AID PROJECT	



PLOT DATE = 3/13/2007
 FILE NAME = c:\pcc\projects\ed06687\plan\plan06687.dgn
 PLOT SCALE = 28.0000' / 1" / IN.
 REFERENCE = #REF#

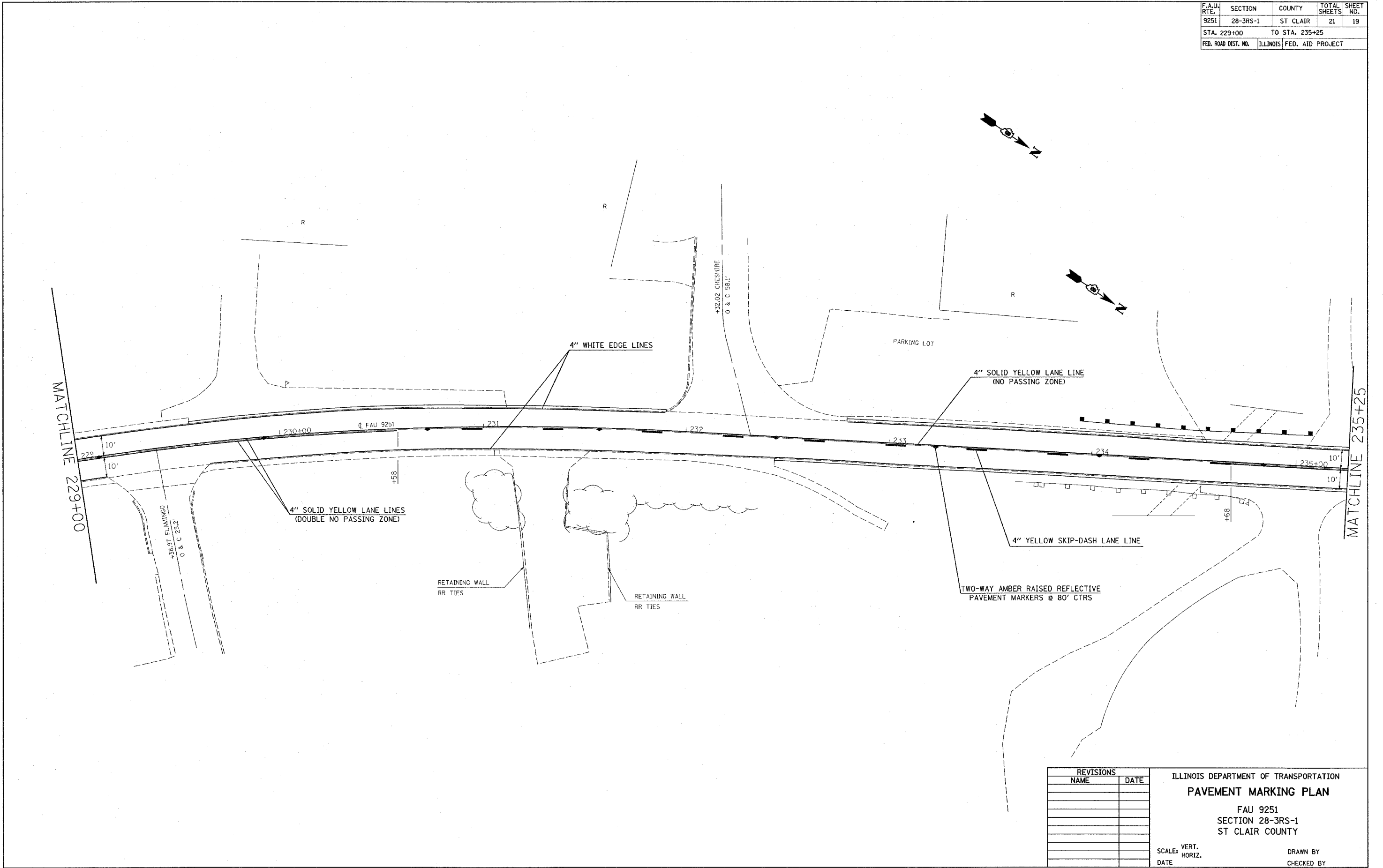
REVISIONS	
NAME	DATE

ILLINOIS DEPARTMENT OF TRANSPORTATION
PAVEMENT MARKING PLAN
 FAU 9251
 SECTION 28-3RS-1
 ST CLAIR COUNTY

SCALE: VERT. _____
 HORIZ. _____
 DATE _____

DRAWN BY _____
 CHECKED BY _____

F.A.U. RTE.	SECTION	COUNTY	TOTAL SHEETS	SHEET NO.
9251	28-3RS-1	ST CLAIR	21	19
STA. 229+00		TO STA. 235+25		
FED. ROAD DIST. NO.	ILLINOIS	FED. AID PROJECT		

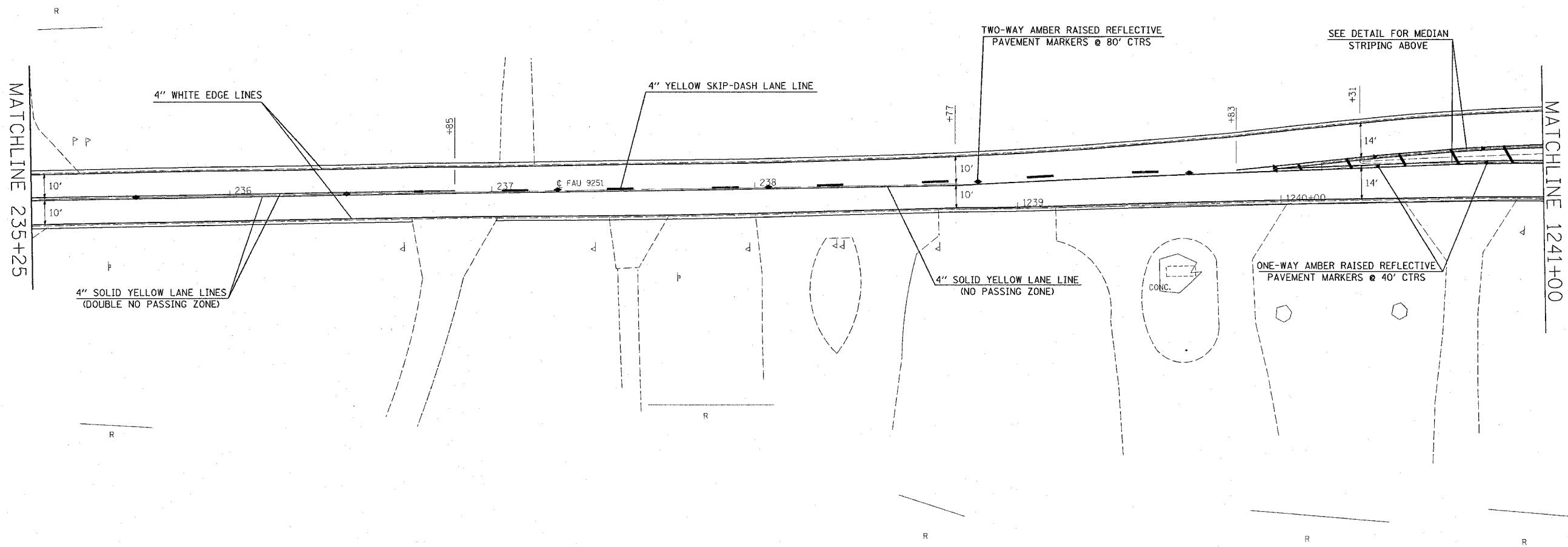
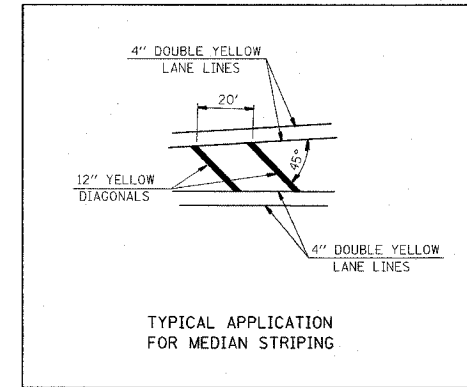


PLOT DATE = 3/13/2007
 PLOT NAME = \\s010001\work\066807\plan\pmark066807.dgn
 PLOT SCALE = 20.00000 / IN.
 REFERENCE = #REF#

REVISIONS	
NAME	DATE

ILLINOIS DEPARTMENT OF TRANSPORTATION
PAVEMENT MARKING PLAN
 FAU 9251
 SECTION 28-3RS-1
 ST CLAIR COUNTY
 SCALE: VERT. _____
 HORIZ. _____
 DATE _____
 DRAWN BY _____
 CHECKED BY _____

F.A.U. RTE.	SECTION	COUNTY	TOTAL SHEETS	SHEET NO.
9251	28-3RS-1	ST CLAIR	21	20
STA. 235+25		TO STA. 1241+00		
FED. ROAD DIST. NO.		ILLINOIS	FED. AID PROJECT	



PLOT DATE = 3/13/2007
 PLOT SCALE = 20.0000' / 1" IN.
 REFERENCE = #REF#

REVISIONS	
NAME	DATE

ILLINOIS DEPARTMENT OF TRANSPORTATION

PAVEMENT MARKING PLAN

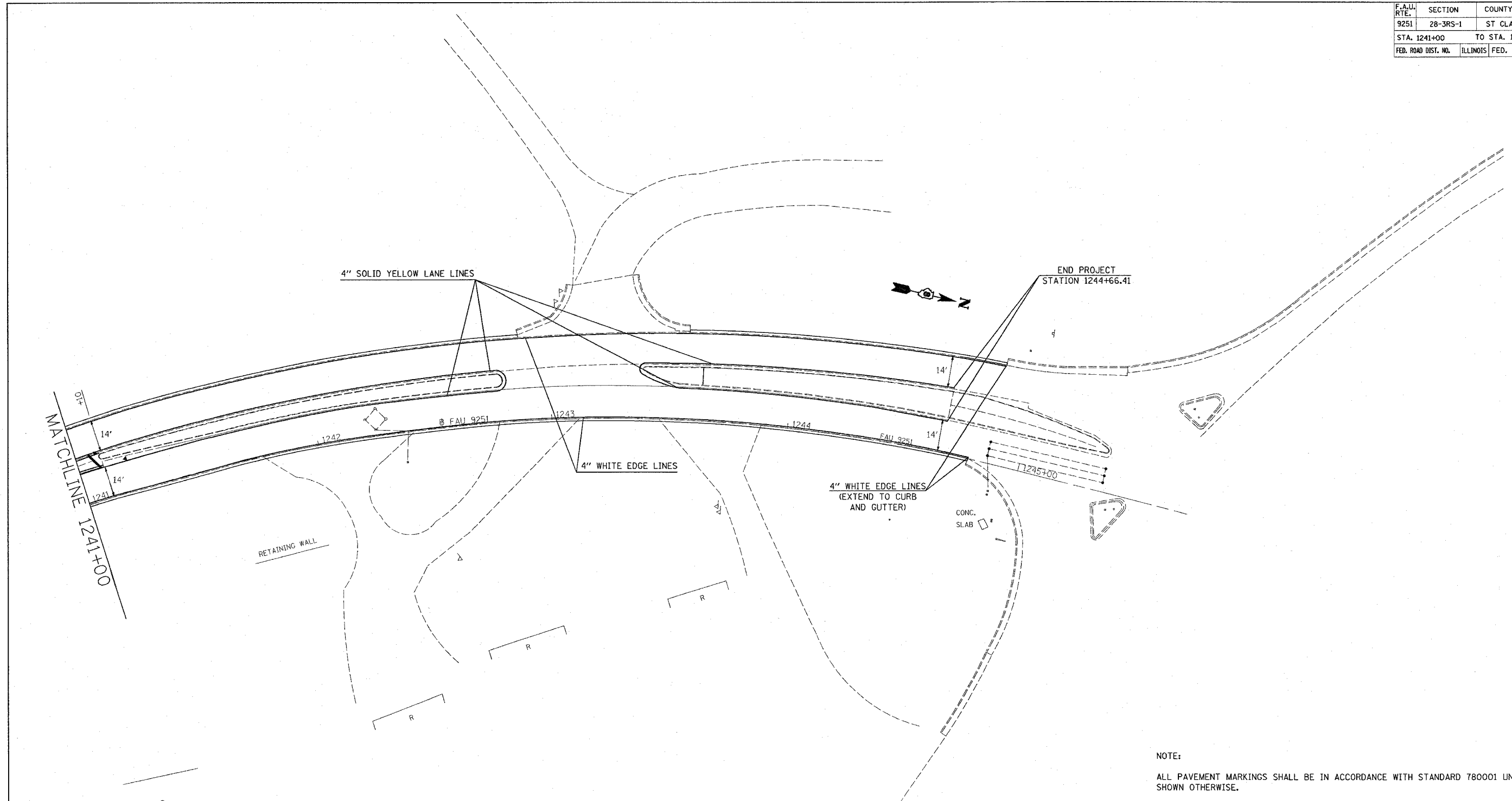
FAU 9251
SECTION 28-3RS-1
ST CLAIR COUNTY

SCALE: VERT. _____
HORIZ. _____

DATE _____

DRAWN BY _____
CHECKED BY _____

FAU. RTE.	SECTION	COUNTY	TOTAL SHEETS	SHEET NO.
9251	28-3RS-1	ST CLAIR	21	21
STA. 1241+00 TO STA. 1245+73.9				
FED. ROAD DIST. NO.			ILLINOIS	FED. AID PROJECT



NOTE:
ALL PAVEMENT MARKINGS SHALL BE IN ACCORDANCE WITH STANDARD 780001 UNLESS SHOWN OTHERWISE.

PLOT DATE = 3/13/2007
FILE NAME = c:\projects\28-3RS-1\plan\pmark065807.dgn
PLOT SCALE = 28.00000 / IN.
REFERENCE = #REF#

REVISIONS	
NAME	DATE

ILLINOIS DEPARTMENT OF TRANSPORTATION
PAVEMENT MARKING PLAN
FAU 9251
SECTION 28-3RS-1
ST CLAIR COUNTY

SCALE: VERT.
HORIZ.
DATE

DRAWN BY
CHECKED BY