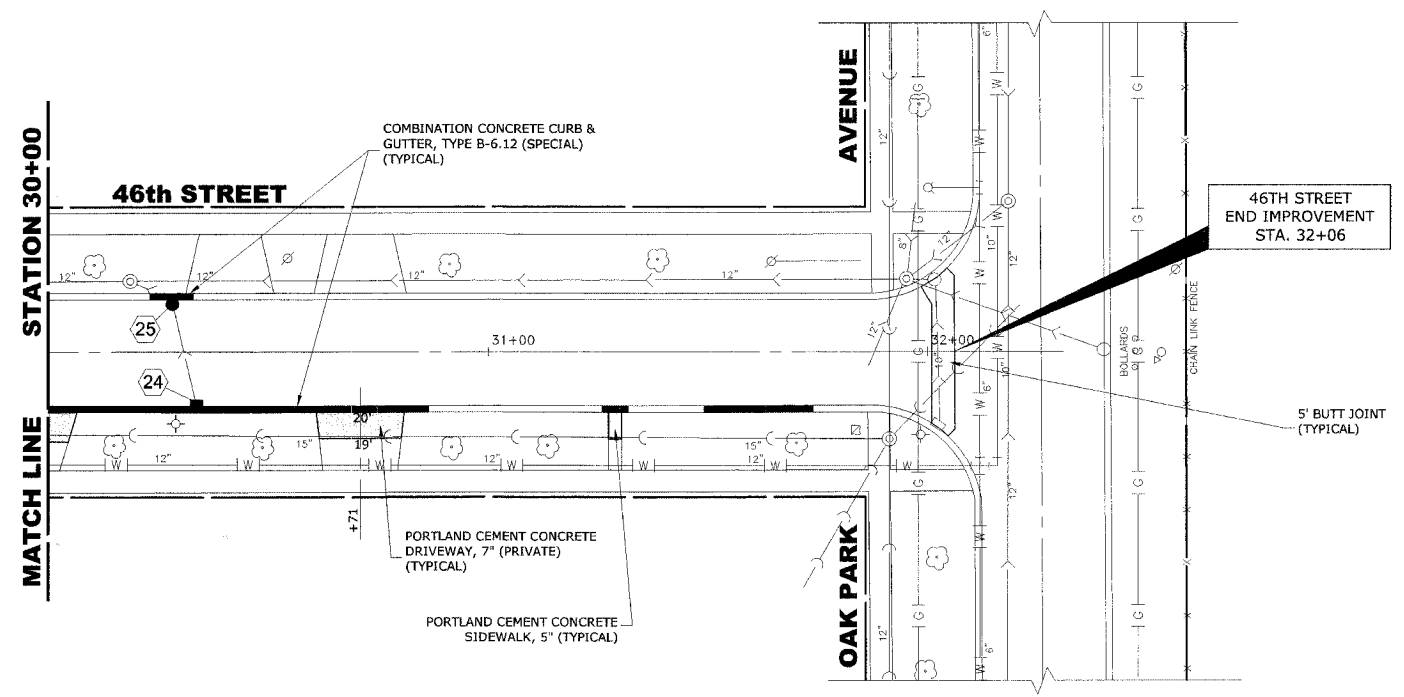
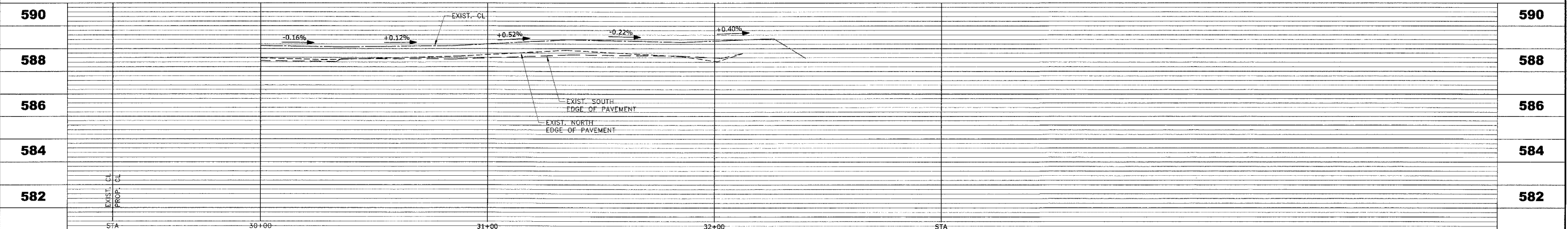


EXISTING TOPOGRAPHY

- 24 STA. 30+34, 12' RT. INLET, TYPE A, WITH TYPE 1 FRAME, OPEN LID RIM ELEV. 588.30 INV. ELEV. 585.92 (NNW)
- 25 STA. 30+28, 12' LT. R.D. CATCH BASIN, 4' DIAMETER WITH TYPE 1 FRAME, OPEN LID RIM ELEV. 588.50 INV. ELEV. 585.43 (SSE, WNW)



PROPOSED IMPROVEMENT



HANCOCK ENGINEERING

- ◆ Civil Engineers
- ◆ Municipal Consultants
- ◆ Established 1911

9933 Roosevelt Road
Westchester, Illinois 60154-2780
Phone: 708/965-0300
Fax: 708/965-1212

**46th STREET RESURFACING PROJECT
VILLAGE OF FOREST VIEW, ILLINOIS**

**EXISTING AND PROPOSED
PAVING, UTILITIES AND DRAINAGE
PLAN AND PROFILE**

SCALE: 1"=20'H. & 1"=2'V.
DRAWN BY: MK/DMM/LEV/TSG
BOOK NO.: SDR33
DATE: 11-1-06
E.H.E. NO.: 320-05-35101

SHEET **11** OF **24**

Drawing File: W:\Projects\2005\351 - 46th St. Resurf. & Sewer\46th St. Resurf.dwg Nov 01, 2006 - 2:30pm