

F. A. U. NO.	SECTION	COUNTY	TOTAL SHEETS	SHEET NO.
3603	03-00048-00-RS	COOK	16	1
STA.		TO STA.		
FED. ROAD DIST. NO.	ALIGNED	FED. AID PROJECT		

CONTRACT NO. 83916

STATE OF ILLINOIS  
DEPARTMENT OF TRANSPORTATION  
DIVISION OF HIGHWAYS

# PLANS FOR PROPOSED FEDERAL AID HIGHWAY

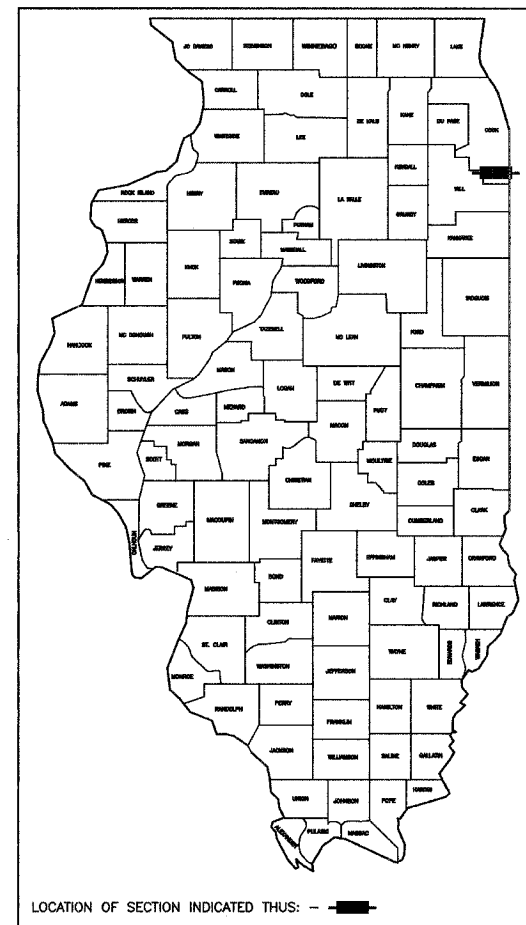
FAU 3603 / MAIN STREET  
STATE STREET TO GLENWOOD DYER ROAD  
LOCAL AGENCY PAVEMENT PRESERVATION

STREET RESURFACING  
SECTION NO.: 03-00048-00-RS

PROJECT: M-8003(572)

JOB NO.: C-91-148-06

VILLAGE OF GLENWOOD  
COOK COUNTY



STATE OF ILLINOIS  
DEPARTMENT OF TRANSPORTATION  
DIVISION OF HIGHWAYS

APPROVED 3/27/07 20 07  
*Jeanne F. Maggio* MAYOR, VILLAGE OF GLENWOOD

PASSED APRIL 11 20 07  
*CHAS. CHAMBERLAIN* REGION ONE ENGINEER OF LOCAL ROADS & STREETS

RELEASED FOR BID BASED ON LIMITED REVIEW APRIL 12 20 07  
*Edm. Ok* DEPUTY DIRECTOR OF HIGHWAYS, REGION ONE ENGINEER

PREPARED BY OR UNDER THE DIRECT SUPERVISION OF:

*Edward J. Tunick*  
3/27/07



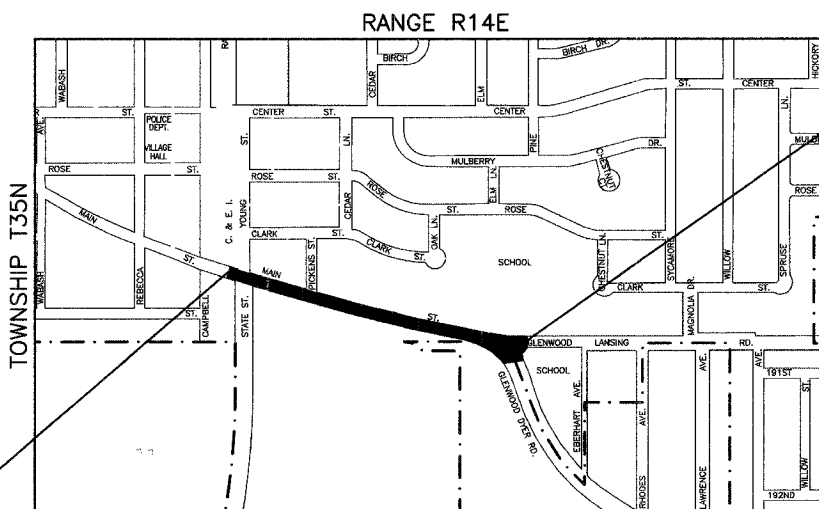
PRINTED BY THE AUTHORITY OF  
THE STATE OF ILLINOIS

**INDEX OF SHEETS**

- 1 COVER SHEET, INDEX OF SHEETS, LOCATION MAP
- INDEX OF STATE STANDARDS
- 2 SUMMARY OF QUANTITIES & GENERAL NOTES
- 3 TYPICAL CROSS SECTION
- 4 PAVEMENT PLAN
- 5 STRIPING PLAN
- 6-16 DISTRICT 1 CADD DETAILS

**STATE STANDARDS**

- |           |   |
|-----------|---|
| 000001-04 | STANDARD STANDARDS, ABBREVIATIONS AND PATTERNS                                  |
| 280001-03 | TEMPORARY EROSION CONTROL SYSTEMS   |
| 424001-04 | CURB RAMPS FOR SIDEWALK   |
| 442201-02 | CLASS C AND D PATCHES   |
| 606001-03 | CONCRETE CURB AND COMBINATION CONCRETE CURB & GUTTER                            |
| 701501-03 | URBAN LANE CLOSURE 2-L, 2-W, UNDIVIDED  |
| 701601-04 | URBAN LANE CLOSURE, MULTILANE INTERSECTION, 1W OR 2W WITH NONTRAVERSABLE MEDIAN |
| 701701-04 | URBAN LANE CLOSURE, MULTILANE INTERSECTION                                      |
| 701801-03 | LANE CLOSURE, MULTILANE, 1W OR 2W, CROSSWALK OR SIDEWALK CLOSURE,               |
| 702001-06 | TRAFFIC CONTROL DEVICES   |
| 780001-01 | TYPICAL PAVEMENT MARKINGS   |
| 781001-02 | TYPICAL APPLICATIONS RAISED REFLECTIVE PAVEMENT MARKERS                         |
| 886001    | DETECTOR LOOP INSTALLATIONS   |
| 886006    | TYPICAL LAYOUT FOR DETECTION LOOPS  |

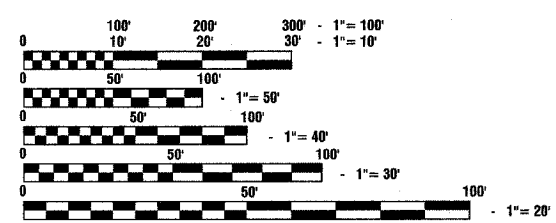


PROJECT MAIN STREET ENDS STA 17+31

TRAFFIC DATA  
2002 ADT = 10,000  
POSTED SPEED LIMIT = 25 MPH

ARTERIAL STREET

PROJECT MAIN STREET BEGINS STA 0+00



FULL SIZE PLANS HAVE BEEN PREPARED USING STANDARD ENGINEERING SCALES, REDUCED SIZED PLANS WILL NOT CONFORM TO STANDARD SCALES, IN MAKING MEASUREMENTS ON REDUCED PLANS, THE ABOVE SCALES MAY BE USED.

J. U. L. I. E.  
JOINT UTILITY LOCATION INFORMATION FOR EXCAVATION  
1 - 800 - 892 - 0123

CONTRACT NO. 83916

**LOCATION MAP**

— INDICATES PROPOSED IMPROVEMENT  
GROSS LENGTH = 1731 FEET = 0.3278 MILES  
NET LENGTH = 1731 FEET = 0.3278 MILES

I.D.O.T. FEDERAL AID DESIGN ENGINEER: KEVIN STALLWORTH 847-705-4169  
CONSULTANTS: ROBINSON ENGINEERING, LTD. 708-331-6700  
CONTACT ENGINEER: RON SMITH