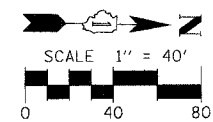
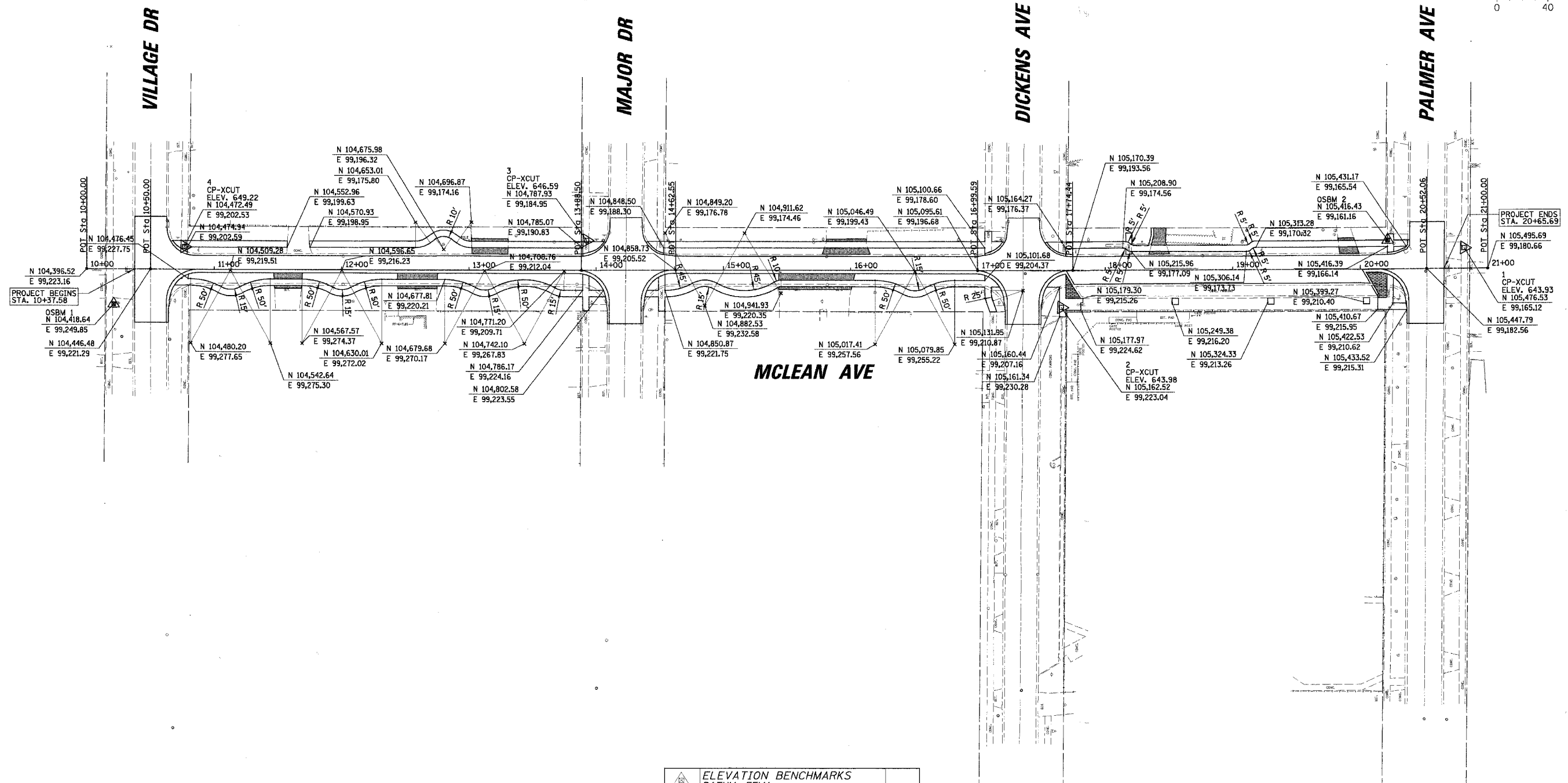


F.A. RTE.	SECTION	COUNTY	TOTAL SHEETS	SHEET NO.
D6-00062-00-RS	COOK	ILLINOIS	41	6
STA. 10+00.00		TO STA. 21+00.00		
FED. ROAD DIST. NO.		ILLINOIS FED. AID PROJECT		

CONTRACT NO. 83920



PROJECT F. SURVEYED BY: DATE: _____
 CHECKED BY: DATE: _____
 NOTE BOOK NO. _____
 STRUCTURE NOTATION: _____
CHRISTOPHER B. BURKE ENGINEERING LTD.
 9575 West Higgins Road, Suite 600
 Rosemont, Illinois 60018
 (847) 823-0500



ELEVATION BENCHMARKS DATUM: FEMA		
NO.	DESCRIPTION	ELEV.
BM 3	X-CUT ON EAST BOLT OF HYDRANT AT NORTHWEST CORNER OF HABER COURT & VILLAGE DRIVE	655.71
OSBM 1	SOUTHEAST FLANGE BOLT OF HYDRANT LOCATED AT SOUTH SIDE OF VILLAGE STREET APPROXIMATELY 38' EAST OF CENTERLINE OF MCLEAN AVENUE	652.29
OSBM 2	X-CUT CHISELED ONTO NORTH EDGE OF RIM OF MANHOLE LOCATED AT SOUTHWEST CORNER OF MCLEAN AVENUE & PALMER AVENUE	643.64

REVISIONS	
NAME	DATE

ILLINOIS DEPARTMENT OF TRANSPORTATION
 ALIGNMENT, TIES AND BENCHMARK
 - MCLEAN AVENUE

CITY OF NORTHLAKE
 VARIOUS FEDERAL GRANTS

SCALE 1" = 40'
 DATE 2/20/2007

DRAWN BY AMP
 CHECKED BY NW