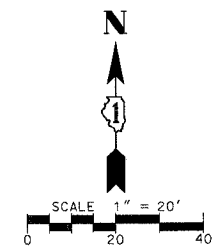


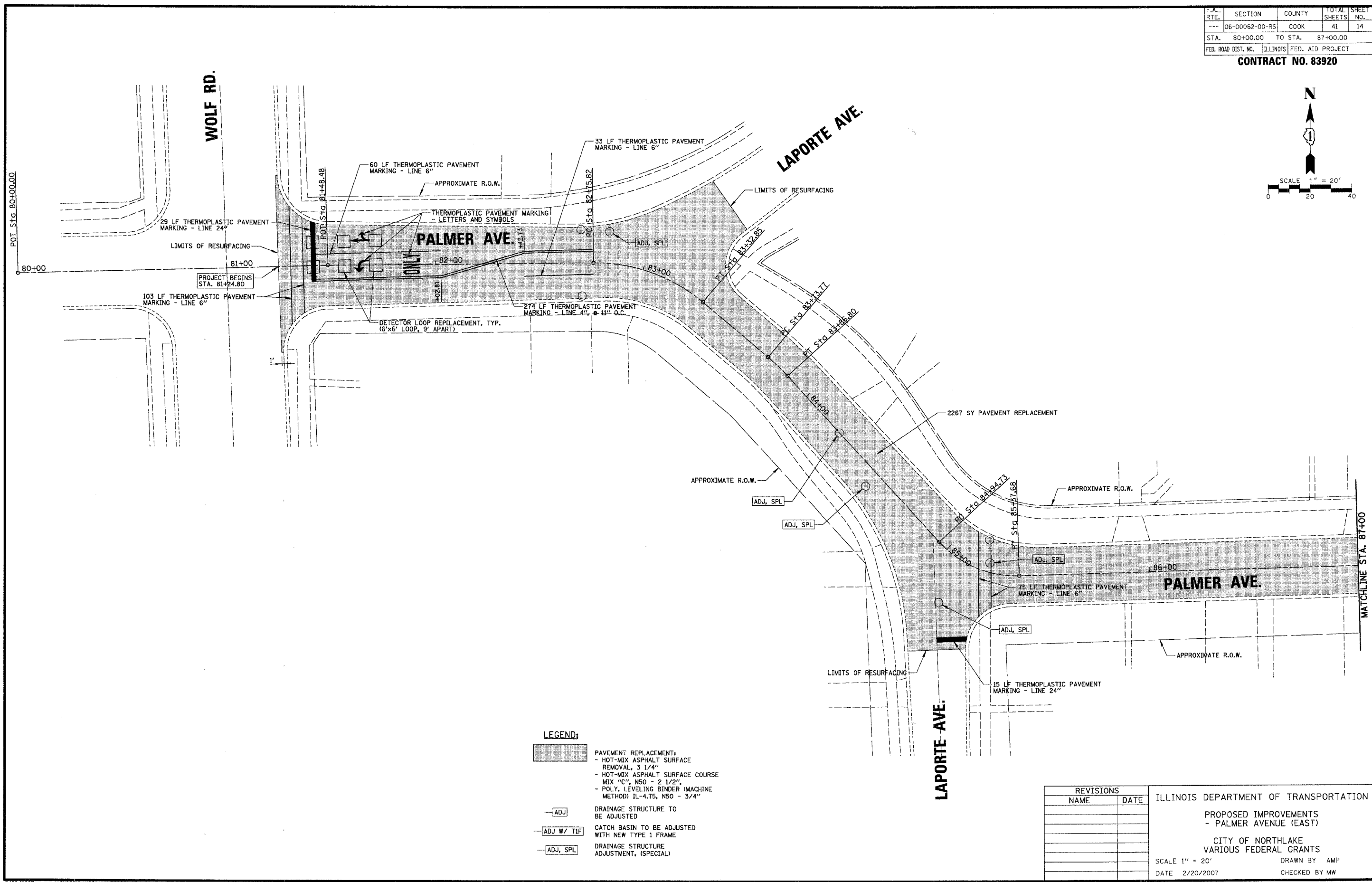
F.A. RTE.	SECTION	COUNTY	TOTAL SHEETS	SHEET NO.
---	06-00062-00-R5	COOK	41	14
STA.	80+00.00	TO STA.	87+00.00	
FED. ROAD DIST. NO.	ILLINOIS	FED. AID PROJECT		

CONTRACT NO. 83920



DATE: \_\_\_\_\_ BY: \_\_\_\_\_  
 DATE: \_\_\_\_\_ BY: \_\_\_\_\_  
 DATE: \_\_\_\_\_ BY: \_\_\_\_\_  
 DATE: \_\_\_\_\_ BY: \_\_\_\_\_  
 DATE: \_\_\_\_\_ BY: \_\_\_\_\_

CHRISTOPHER B. BURKE ENGINEERING LTD. PLAN  
 9575 West Higgins Road, Suite 600  
 Rosemont, Illinois 60018  
 (847) 823-0500



- LEGEND:**
- PAVEMENT REPLACEMENT:  
 - HOT-MIX ASPHALT SURFACE REMOVAL, 3 1/4"  
 - HOT-MIX ASPHALT SURFACE COURSE MIX "C", N50 - 2 1/2"  
 - POLY. LEVELING BINDER (MACHINE METHOD) IL-4.75, N50 - 3/4"
  - DRAINAGE STRUCTURE TO BE ADJUSTED
  - CATCH BASIN TO BE ADJUSTED WITH NEW TYPE 1 FRAME
  - DRAINAGE STRUCTURE ADJUSTMENT, (SPECIAL)

REVISIONS	
NAME	DATE

ILLINOIS DEPARTMENT OF TRANSPORTATION  
 PROPOSED IMPROVEMENTS  
 - PALMER AVENUE (EAST)  
 CITY OF NORTHLAKE  
 VARIOUS FEDERAL GRANTS  
 SCALE 1" = 20' DRAWN BY AMP  
 DATE 2/20/2007 CHECKED BY MW