

F.A. RTE.	SECTION	COUNTY	TOTAL SHEETS	SHEET NO.
---	06-00062-00-RS	COOK	41	30
STA.	TO STA.			
FED. ROAD DIST. NO.	ILLINOIS	FED. AID PROJECT		

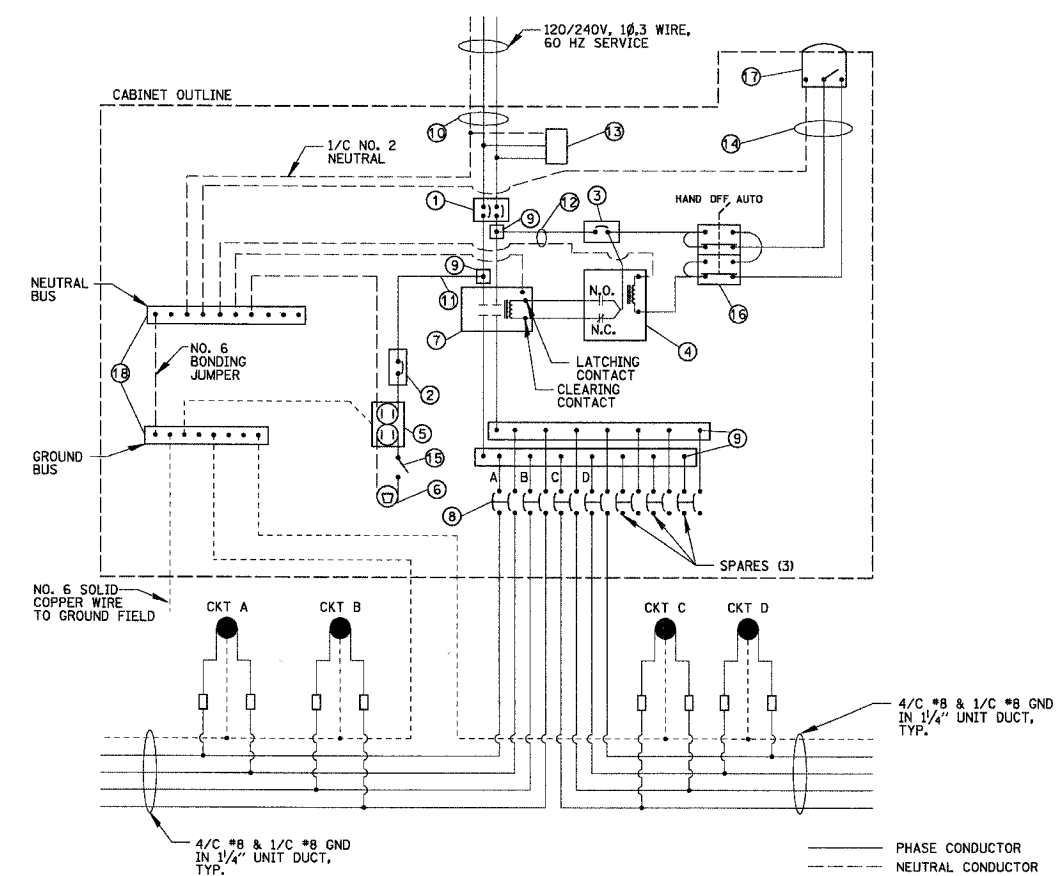
**CONTRACT NO. 83920**

ITEM	SPECIFICATION	MANUFACTURER/MODEL NO. OR EQUAL
1 MAIN CIRCUIT BREAKER	100 AMPERE, 2 P, 240 V RATING, 10K AIC (NOTE 3)	SIEMENS NO. ED42B100
2 LAMPHOLDER CIRCUIT BREAKER	20 AMPERE, 1 P, 120 V RATING, 10K AIC	SIEMENS NO. ED41B020
3 PHOTOELECTRIC CONTROL CIRCUIT BREAKER	15 AMPERE, 1 P, 120 V RATING, 10K AIC	SIEMENS NO. ED41B015
4 AUXILIARY RELAY	120 V OPERATED SPST 60 HZ COIL 600V NORMALLY OPEN CONTACTS	MAGNECRAFT NO. W389ACX-9
5 CABINET RECEPTACLE AND BOX	COMMERCIAL GRADE GFCI 20A/120V, MOUNTED IN A WEATHERPROOF CAST ALUMINUM SINGLE GANG BOX WITH WEATHERPROOF COVER	RECEPTACLE: LEVITON NO. 8899, BOX: APPLETON NO. WSM150 COVER: APPLETON NO. WHG1
6 CABINET LIGHT AND BOX	120V WEATHERPROOF LAMPHOLDER MOUNTED IN A CAST ALUMINUM BOX & EXT. GRADE 100W LAMP	LIGHT & BOX: RAB NO. VX100DG
7 CONTACTOR	100 AMPERE, 2 POLE, 120 V COIL, MECH HELD	SQUARE D NO. 8903 S00 10 V02
8 BRANCH LINE CIRCUIT BREAKERS	7 - 20 AMPERE, 2 P, 240 V RATING, 10K AIC	SIEMENS NO. ED42B020
9 POWER DISTRIBUTION BLOCK	600 VOLT, INSULATED, SIZE AS REQUIRED	MARATHON
10 SERVICE CABLES	3-600V (XLP-TYPE USE) NO. 2	N/A
11 LAMPHOLDER WIRE	2-600V XLP NO. 12	N/A
12 CONTROL WIRE	2-600V XLP NO. 12	N/A
13 SURGE ARRESTOR	10 K AMPERE RATING	SQUARE D NO. SDSA 1175
14 PHOTOELECTRIC CONTROL WIRE	3-600V XLP NO. 12	3-600V XLP NO. 12
15 DOOR SWITCH	20A/120V, DOOR MOUNTED SNAP ACTION TYPE PLUNGER SWITCH	OMRON NO. A-20GQ-K
16 HAND-AUTO-OFF CONTROL SWITCH	20 A, 3 POS. MTD IN CAST ALUM. ENCLOSURE	SQUARE D NO. 9001 KYK 111
17 PHOTOCCELL	120V, MTD. ON CABINET, DELAY TYPE, SPST-NC	FISHER PIERCE NO. FPFA-105
18 GROUND & NEUTRAL BUS	600V, ALUMINUM, SIZE AS REQUIRED	ILSCO NO. NB-120

**NOTES:**

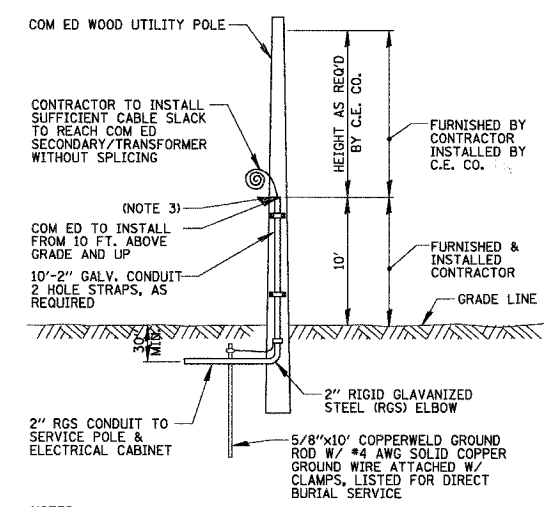
- ALL ITEMS LISTED IN LIGHTING CONTROLLER COMPONENT SCHEDULE SHALL BE CONSIDERED INCIDENTAL TO THE PRICE BID FOR "LIGHTING CONTROLLER" INCLUDING CABINET AND FOUNDATION.
- THE LIGHTING CONTROLLER TOGETHER WITH ALL OF ITS COMPONENTS SHALL BE UL LISTED AS AN "ENCLOSED INDUSTRIAL CONTROL PANEL" UNDER UL508A.
- CONNECTION OF SURGE ARRESTOR TO LINE SIDE OF MAIN CIRCUIT BREAKER SHALL NOT BE "DOUBLE LUGGED."

**LIGHTING CONTROLLER COMPONENT SCHEDULE**



**LIGHTING CONTROLLER WIRING DETAIL**

N.T.S.

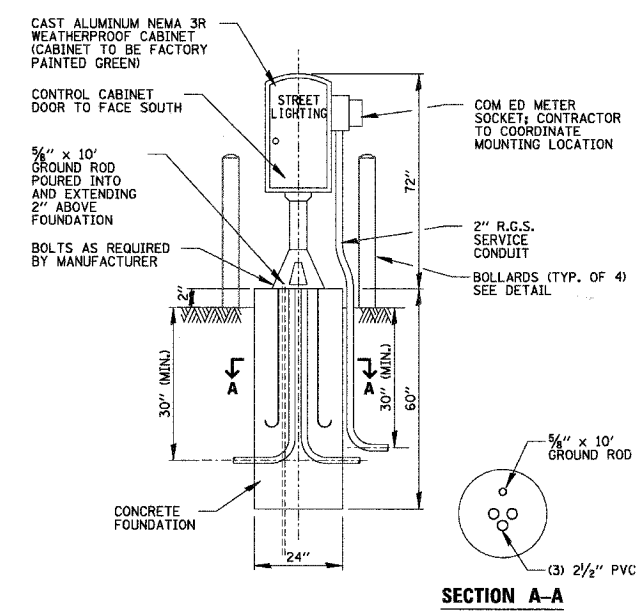


**NOTES:**

- ALL WORK SHALL CONFORM TO COM ED'S BOOK OF "INFORMATION AND REQUIREMENTS FOR THE SUPPLY OF ELECTRIC SERVICE."
- ALL MATERIAL ABOVE EXCEPT FOR POLE SHALL BE INCLUDED IN THE PRICE BID FOR "ELECTRIC SERVICE INSTALLATION".
- CONTRACTOR TO PROVIDE CONDUIT BUSHING AND SEALING COMPOUND.

**COM ED OVERHEAD CONNECTION POLE**

N.T.S.

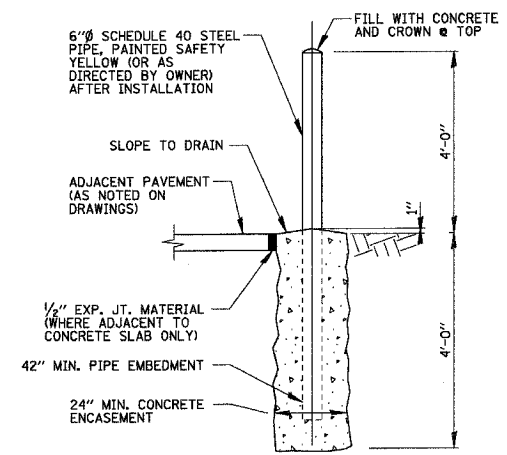


**LIGHTING CONTROLLER CABINET AND FOUNDATION**

N.T.S.

CIRCUIT ID	175 MH 240V LIGHT STANDARD	LOAD/POLE (WATTS)	TOTAL CIRCUIT LOAD (WATTS)
A	4	208 W	832 W
B	3	208 W	624 W
C	3	208 W	624 W
D	3	208 W	624 W
TOTAL			2704 W

**LIGHTING CONTROLLER CIRCUIT WATTAGE LOADS**



**NOTES:**

SEE SITE DRAWING FOR LOCATION

**BOLLARD DETAIL**

N.T.S.

**NOTE:**

ALL CONDUCTORS IN THE UNIT DUCT RUNS SHALL HAVE COLOR CODED INSULATION THROUGHOUT THE ENTIRE LENGTH OF THE CONDUCTOR. THE COLOR IDENTIFICATION FOR THE SYSTEM GROUND SHALL BE GREEN. THE PHASE CONDUCTORS SHALL BE PER IDOT STANDARD 1066.02 (A).

REVISIONS	
NAME	DATE

ILLINOIS DEPARTMENT OF TRANSPORTATION  
 MCLEAN AVENUE  
 PROPOSED IMPROVEMENTS  
 LIGHTING DETAILS (1 OF 2)  
 CITY OF NORTHLAKE - MCLEAN AVENUE  
 SCALE N.T.S. DRAWN BY KB  
 DATE 2/20/2007 CHECKED BY JPC

SURVEYED BY: DATE: \_\_\_\_\_  
 ALIGNED BY: DATE: \_\_\_\_\_  
 CHECKED BY: DATE: \_\_\_\_\_  
 DRAWN BY: DATE: \_\_\_\_\_  
 NO. \_\_\_\_\_  
**CHRISTOPHER B. BURKE ENGINEERING LTD.**  
 9575 West Higgins Road, Suite 600  
 Rosemont, Illinois 60018  
 (847) 823-0500  
 PROFILE BY: DATE: \_\_\_\_\_  
 NOTE BOOK: \_\_\_\_\_  
 NO. \_\_\_\_\_

**CHRISTOPHER B. BURKE ENGINEERING, LTD.**  
 9575 W. Higgins Road, Suite 600  
 Rosemont, Illinois 60018  
 (847) 823-0500