

**INDEX OF SHEETS**

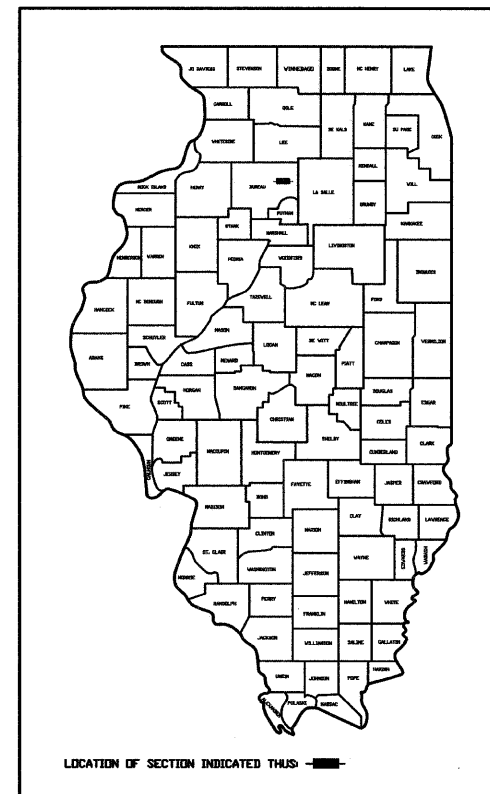
1	COVER SHEET AND INDEX OF SHEETS
2	GENERAL NOTES
3	SUMMARY OF QUANTITIES
4-5	SCHEDULES OF QUANTITIES
6-11	TYPICAL SECTIONS
12	SUPERELEVATION DETAIL
13-14	PROJECT SCHEMATIC
15-18	PLAN AND PROFILES
19-21	DETAILS
22-24	CULVERT DETAILS
25-33	CROSS SECTIONS

STATE OF ILLINOIS  
DEPARTMENT OF TRANSPORTATION  
PLANS FOR  
PROPOSED LOCAL AGENCY IMPROVEMENTS  
FY-07 TARP PROJECT

PLAN HORIZ. 1" = 20'  
PROFILE HORIZ. 1" = 20'  
PROFILE VERT. 1" = 2'  
CROSS SECTIONS 1" = 2'

**HIGHWAY STANDARDS**

280001-03	TEMPORARY EROSION CONTROL SYSTEMS
420001-06	PAVEMENT JOINTS
483001-03	PCC SHOULDER
515001-02	NAME PLATES FOR BRIDGES
542406	METAL END SECTIONS FOR PIPE ARCHES
701001-01	OFF-ROAD OPERATIONS, 2L, 2W, MORE THAN 4.5 m (15') AWAY
701006-02	OFF-ROAD OPERATIONS, 2L, 2W, 4.5 M (15') TO 600 mm (24") FROM PAVEMENT EDGE
701201-02	LANE CLOSURE, 2L, 2W, DAY ONLY, FOR SPEEDS > 45 MPH
701301-02	LANE CLOSURE, 2L, 2W, SHORT TIME OPERATIONS
701306-01	LANE CLOSURE, 2L, 2W, SLOW MOVING OPERATIONS DAY ONLY, FOR SPEEDS > 45 MPH
701326-02	LANE CLOSURE, 2L, 2W, PAVEMENT WIDENING, FOR SPEEDS > 45 MPH
702001-06	TRAFFIC CONTROL DEVICES
780001-01	TYPICAL PAVEMENT MARKINGS
000001-04	STANDARD SYMBOLS, ABBREVIATIONS AND PATTERNS
BLR 14-9	PORTLAND CEMENT CONCRETE PAVEMENT (NONREINFORCED)
BLR 21-6	TYPICAL APPLICATION OF TRAFFIC CONTROL DEVICES FOR CONSTRUCTION ON RURAL LOCAL HIGHWAYS
BLR 22-4	TYP. APPL. OF T.C.D. FOR RURAL LOC. HWYS. (2-LANE 2 WAY RURAL TRAFF.) (RD. CLOSED TO THRU TRAFF.)
BLR 24-1	MAILBOX TURNOUT FOR LOCAL ROADS



DESIGN GUIDELINES= 3R

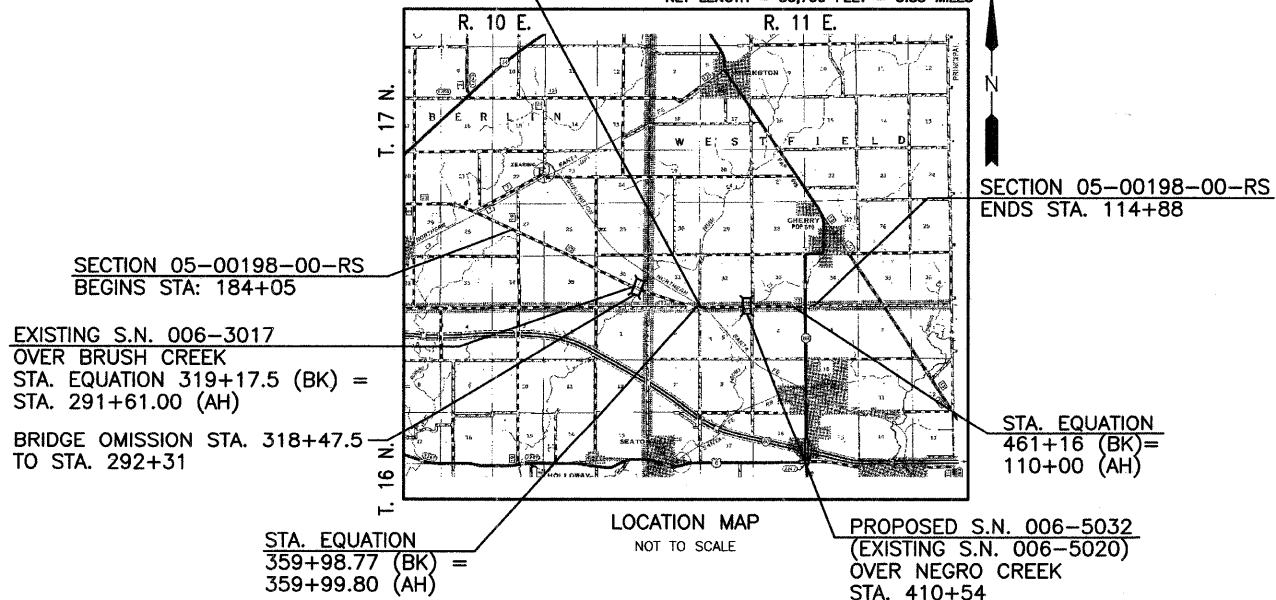
FAS 1253 (COUNTY HIGHWAY 33)  
SECTION 05-00198-00-RS/BUREAU COUNTY  
PROJECT NO. RS-1253(103)  
BERLIN, HALL & WESTFIELD TOWNSHIP  
C-93-037-07

FUNCTIONAL CLASSIFICATION	HIGHWAY	DESIGN TRAFFIC	DESIGN SPEED
MINOR COLLECTOR	CH 33	750 ADT	50 MPH

CALL J.U.L.I.E.  
BEFORE YOU DIG  
800-892-0123

TWP. 17 N. R. 10 E. SECTIONS 26, 27, 35 & 36  
TWP. 17 N. R. 11 E. SECTIONS 31, 32, 33  
TWP. 16 N. R. 11 E. SECTIONS 4, 5 & 6

RR OMISSION  
STA. 361+76.24 TO  
STA. 361+91.95  
GROSS LENGTH = 30,954 FEET = 5.86 MILES  
NET LENGTH = 30,799 FEET = 5.83 MILES



04/09/07



PROFESSIONAL DESIGN FIRM  
LICENSE NO. 184-001717

APPROVED 4-10-2007  
*William J. Haith*  
BUREAU COUNTY ENGINEER

PASSED 4-10-2007  
*Samuel C. L.*  
DISTRICT 3 ENGINEER OF LOCAL ROADS & STREETS

RELEASING FOR BID  
BASED ON LIMITED  
REVIEW 4-10-2007  
*George E. ...*  
DEPUTY DIRECTOR OF HIGHWAYS, REGION 2 ENGINEER

STATE OF ILLINOIS  
DEPARTMENT OF TRANSPORTATION

DRAWN BY: NV	CAD: COVER	REVISIONS		SCALE: NONE	SHEET 1
		DATE	BY		
CHECKED BY: DJD	DATE: 04/07	FILE NO.: 6813.00Y-1		OF	33